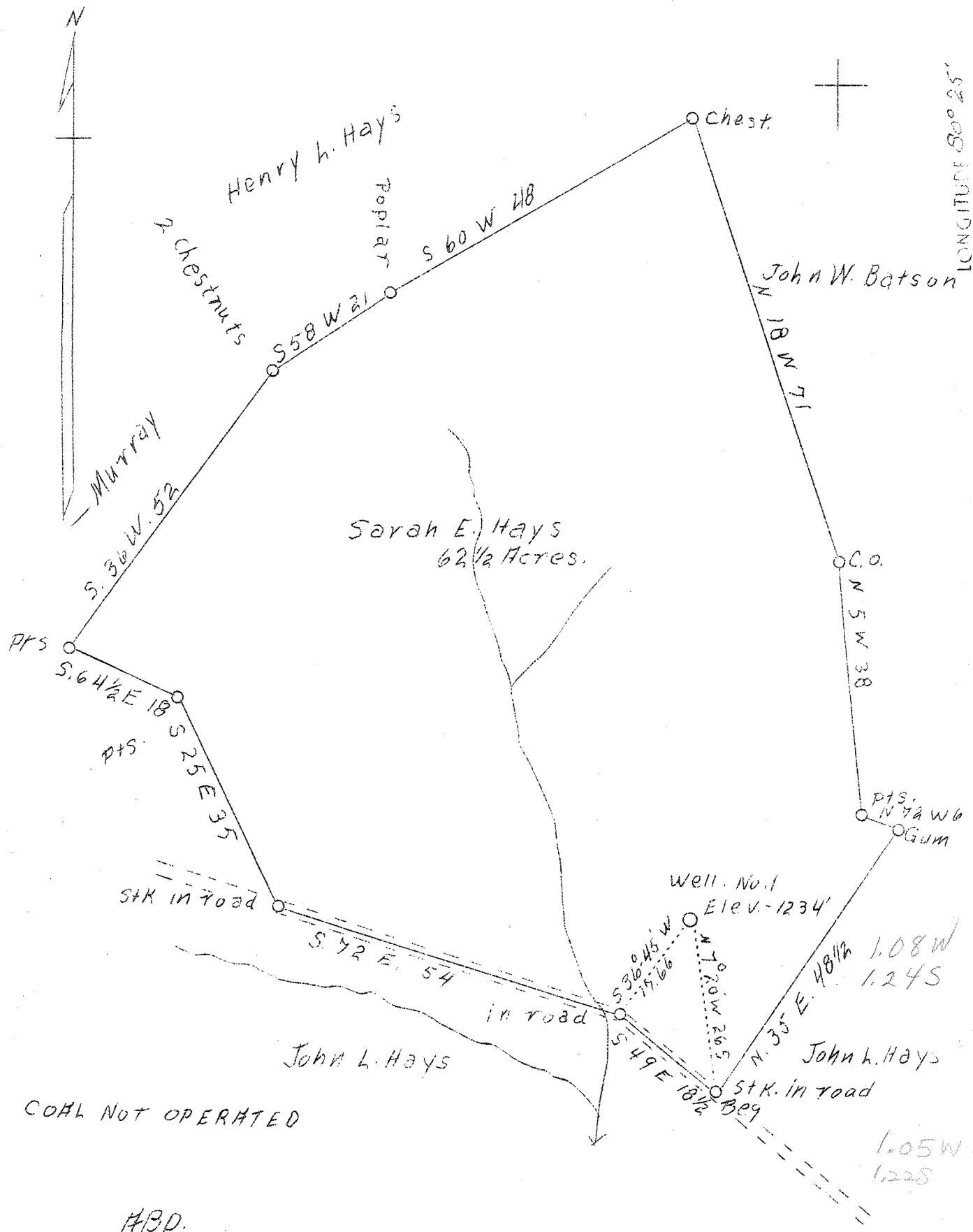


LATITUDE 39° 35'

LONGITUDE 80° 25'



Company L. A. Dillenger  
 Address Waynesburg, Pa.  
 Farm Sarah E. Hays  
 Tract One  
 Acres 62-1/2  
 Well (Farm) No. One  
 Serial No. 1509  
 Elevation (SF) 1234  
 Quadrangle Mannington  
 County Marion  
 District Mannington  
 Engineer A. L. Headley  
 Eng. Reg. No. -  
 Date Sept. 29, 1938  
 Scale 1" = 20 poles

STATE OF WEST VIRGINIA  
 Department of Mines  
 OIL & GAS DIVISION  
 Charleston

WELL LOCATION MAP  
 File No. Mar-203-A

x Denotes location of well on U. S. Topographic Maps, scale 1 to 62,500, latitude and longitude lines being represented by border lines as shown.

- Denotes one inch spaces on border line of original tracing.