

Latitude

Longitude

+

1.90s  
289w

Topo Location

7.5' Loc. \_\_\_\_\_ 15' Loc. \_\_\_\_\_  
\_\_\_\_\_ (calc.) \_\_\_\_\_

Company \_\_\_\_\_

Farm \_\_\_\_\_

15' Quad \_\_\_\_\_  
(sec.)

7.5' Quad Grant Town

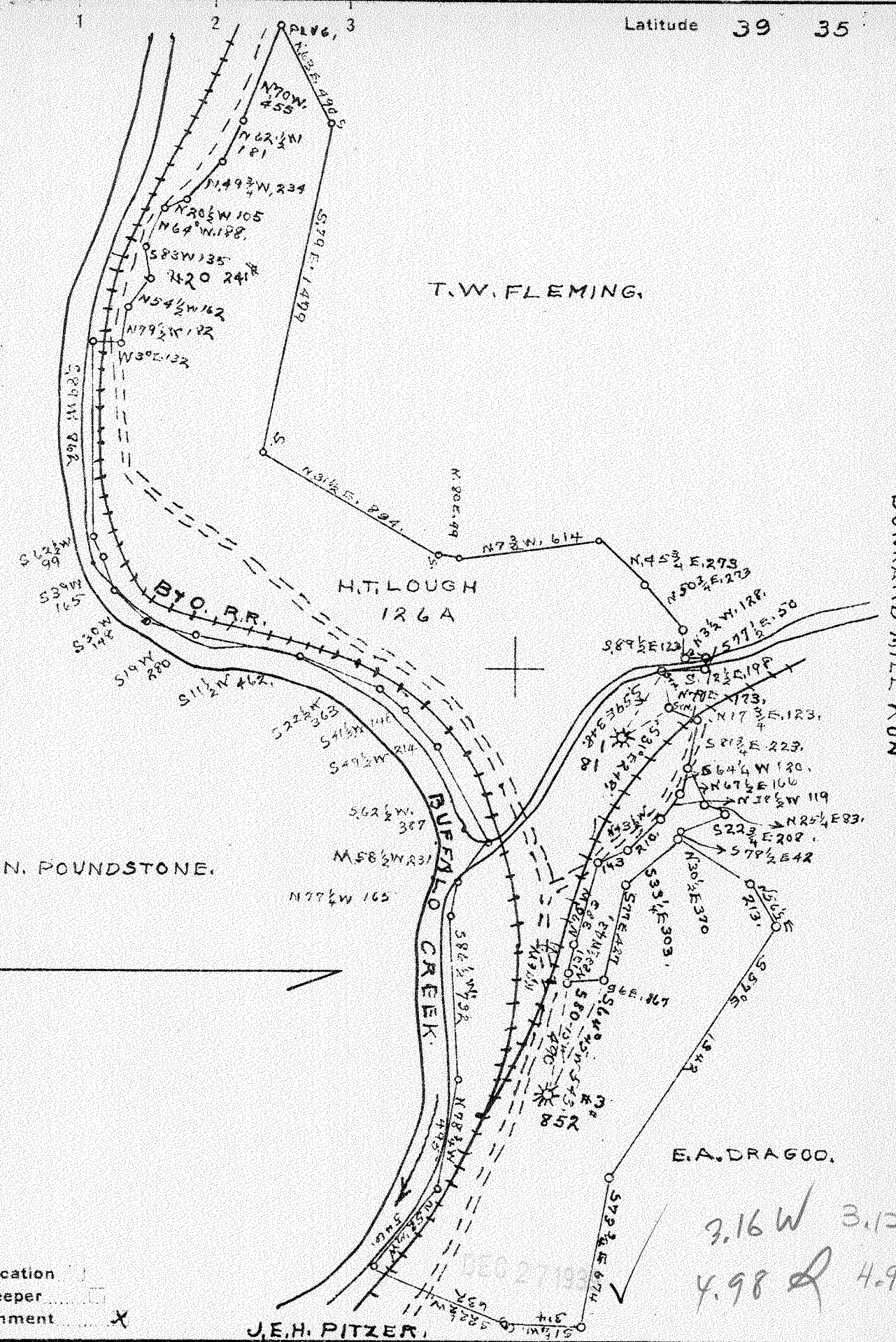
District Lincoln

WELL LOCATION PLAT

County 049 Permit 30249

Latitude 39 35

Longitude 80



New Location

Drill Deeper

Abandonment

J.E.H. PITZER.

Company CARNEGIE NATURAL GAS CO.

Address FRICK BLDG. PITTSBURGH PA.

Farm H.T. LOUGH

Tract 1 Acres 126 Lease No E7956-40

Well (Farm) No 1 Serial No. 81

Elevation (Spirit Level) 925

Quadrangle BLACKSVILLE S.W.

County MARION District LINCOLN

Engineer Glen H. Huey

Engineer's Registration No. \_\_\_\_\_

File No. \_\_\_\_\_ Drawing No. \_\_\_\_\_

Date 12/6/1939 Scale 600=1"

STATE OF WEST VIRGINIA  
DEPARTMENT OF MINES  
OIL AND GAS DIVISION  
CHARLESTON

WELL LOCATION MAP  
FILE NO. MAR-249A

+ Denotes location of well on United States Topographic Maps, scale 1 to 62,500. latitude and longitude lines being represented by border lines as shown.

- Denotes one inch spaces on border line of original tracing.