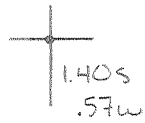


Latitude



Longitude

Topo Location

7.5' Loc. _____ 15' Loc. _____
 _____ (calc.) _____

Company _____

Farm _____

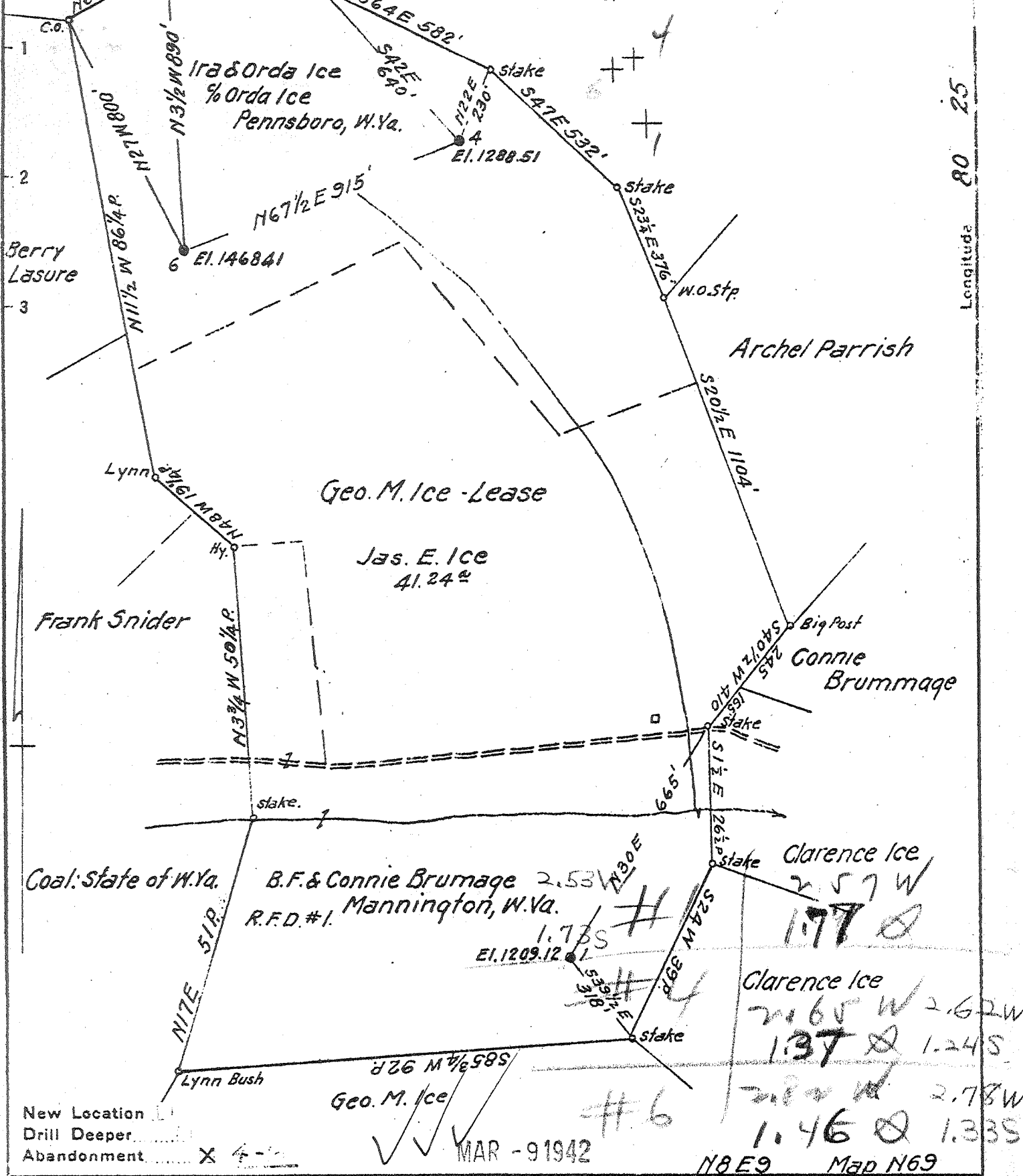
15' Quad _____
(sec.)

7.5' Quad Glaves Gap

District Mammington

WELL LOCATION PLAT

County 049 Permit 30340



Longitude 80 25

Company South Penn Natural Gas Co.
 Address Parkersburg, W. Va.
 Farm Geo. M. Ice
 Tract _____ Acres 124 Lease No. 58124
 Well (Farm) No. 1-4-6 Serial No. _____
 Elevation (Spirit Level) see above
 Quadrangle Mannington
 County Marion District Mannington
 Engineer E. C. Tabler
 Engineer's Registration No. _____
 File No. _____ Drawing No. _____
 Date Oct. 28, 1941 Scale 1" = 400'

STATE OF WEST VIRGINIA
 DEPARTMENT OF MINES
 OIL AND GAS DIVISION
 CHARLESTON

WELL LOCATION MAP

FILE NO. MAR-340-A WEL #4
MAR-341-A WEL #6

+ Denotes location of well on United States Topographic Maps, scale 1 to 62,500. latitude and longitude lines being represented by border lines as shown.

- Denotes one inch spaces on border line of original tracing.

GEO. M. ICE NOS. 6 & 4 - SOUTH PENN NAT. GAS CO. - MAR-340-A & 341-A

STATE OF WEST VIRGINIA
DEPARTMENT OF MINES
OIL AND GAS DIVISION

428

WELL RECORD

OIL

Permit No. 340-A

Oil or Gas Well OIL
(KIND)

Company South Penn Natural Gas Company
Address Union Trust Bldg. Parkersburg, W. Va.
Farm Geo. M. Ice Acres 1.24
Location (waters) Warrior Fork
Well No. 6 Elev. 1468.41
District Mannington County Marion
The surface of tract is owned in fee by Ira & Orda Ice,
c/o Orda Ice Address Pennsboro, W. Va.
Mineral rights are owned by James E. Ice et al
H. #6, Address Mannington, W. Va.
Drilling commenced January 27, 1914
Drilling completed March 22, 1914
Date Shot 3-24-14 From B. Injun #3
With 20 qts.

Casing and Tubing	Used in Drilling	Left in Well	Packers
Size			
16			Kind of Packer
13			
10	199' (Pulled)		Size of
8 1/4	1795'		
6 5/8	2647'		Depth set
5 3/16			
3			Perf. top
2			Perf. bottom
Liners Used			Perf. top
			Perf. bottom

Open Flow /10ths Water in --- Inch
/10ths Merc. in --- Inch
Volume --- Cu. Ft.
Rock Pressure --- lbs. --- hrs.
Oil 10 bbls., 1st 24 hrs.
Fresh water --- feet --- feet
Salt water 2190-5 feet --- feet

CASING CEMENTED --- SIZE --- No. Ft. --- Date ---
COAL WAS ENCOUNTERED AT 1180 FEET 48 INCHES
1275 FEET 84 INCHES --- FEET --- INCHES
--- FEET --- INCHES --- FEET --- INCHES

Formation	Color	Hard or Soft	Top	Bottom	Oil, Gas or Water	Depth Found	Remarks
Mapletown Coal			1180	1184			
Pittsburgh Coal			1275	1282			
Little Dunkard			1644	1 669			
Big Dunkard			1770	1812			
Gas Sand			1925	1955			
1st Salt Sand			2187	2209			
2nd Salt Sand			2250	2330	Water	2190-2195	
Maxon Sand			2400	2505			
Big Lime			2505	2560	Oil show	2496	
Big Injun			2560		Gas Oil	2632 2633	
Total Depth				2647			

