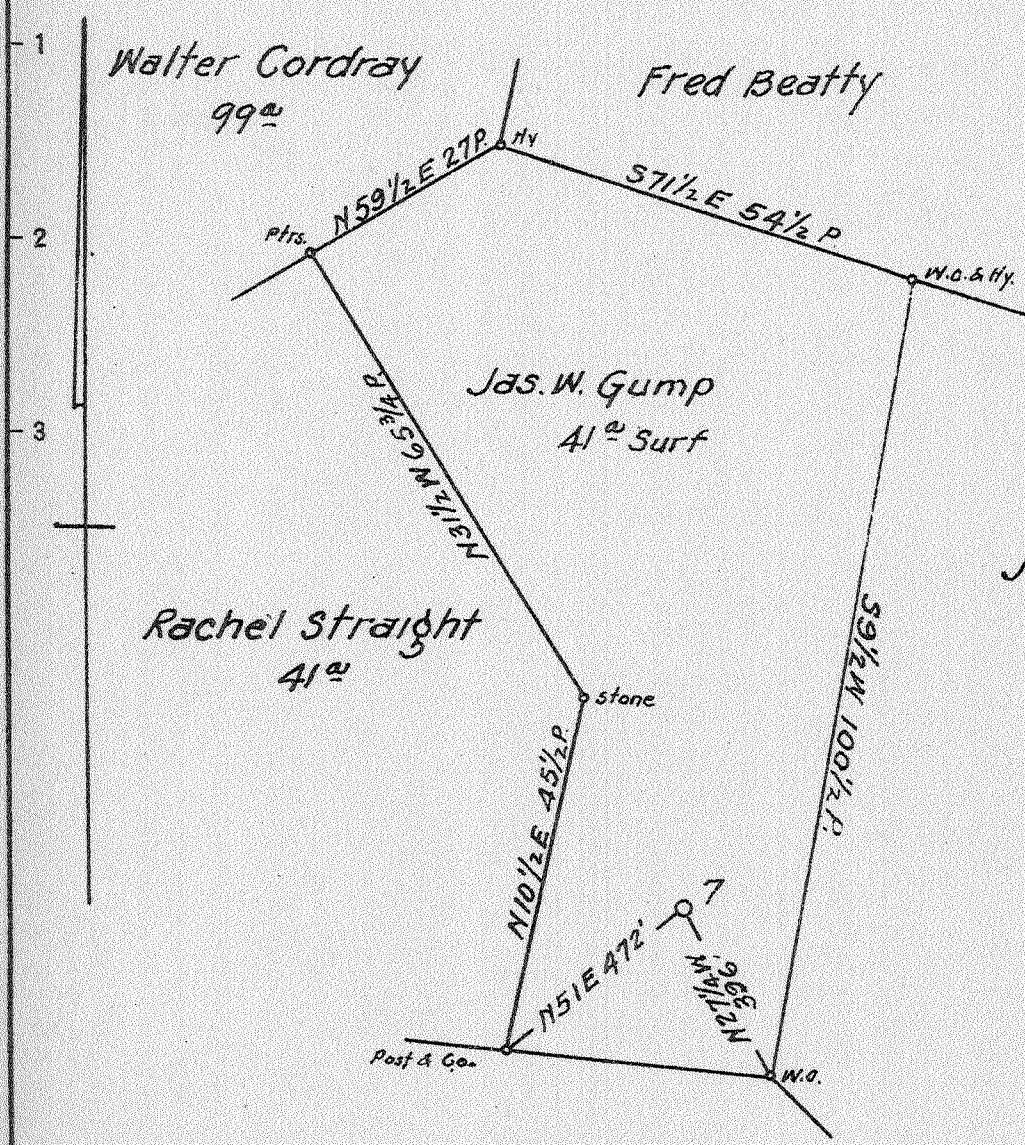




Latitude 39° 35'

Longitude 80° 25'



P.T. Gump  
232<sup>ac</sup>

Coal: Union Trust Co. Trustee  
Pittsburgh, Pa.

Surface: Jas W. Gump  
Mannington, W. Va.

0.74W  
4.82S  
0.74W  
4.92

New Location...   
Drill Deeper...   
Abandonment...

MAY 17 1942

N 5 E 11 Map N 50 E

Company South Penn Natural Gas Co.  
 Address Parkersburg W. Va.  
 Farm S. J. Gump  
 Tract \_\_\_\_\_ Acres 532 Lease No. 58301  
 Well (Farm) No. 7 Serial No. \_\_\_\_\_  
 Elevation (Spirit Level) 1171.99  
 Quadrangle Mannington  
 County Marion District Mannington  
 Engineer Emmon Haines  
 Engineer's Registration No. \_\_\_\_\_  
 File No. \_\_\_\_\_ Drawing No. \_\_\_\_\_  
 Date Mar. 13, 1942 Scale 1" = 400'

STATE OF WEST VIRGINIA  
DEPARTMENT OF MINES  
OIL AND GAS DIVISION  
CHARLESTON

WELL LOCATION MAP  
FILE NO. MAR-346-A

+ Denotes location of well on United States Topographic Maps, scale 1 to 62,500, latitude and longitude lines being represented by border lines as shown.  
- Denotes one inch spaces on border line of original tracing.

STATE OF WEST VIRGINIA  
DEPARTMENT OF MINES  
OIL AND GAS DIVISION

424

WELL RECORD

Permit No. 346-A

Oil or Gas Well oil  
(KIND)

Company South Penn Natural Gas Company  
Address Union Trust Bldg. Parkersburg, W. Va.  
Farm S. J. Gump Acres 532  
Location (waters) Huey Run  
Well No. 7 Elev. 1171.99  
District Mannington County Marion  
The surface of tract is owned in fee by Jas. W. Gump  
Mannington, W. Va.  
Mineral rights are owned by S. J. Gump et al  
/o First-Exchange Realty, Mannington, W. Va.  
Drilling commenced Aug. 17, 1918  
Drilling completed Oct. 21, 1918  
Date Shot Oct. 23-1918 From -- To --  
With 15 Qts.

| Casing and Tubing | Used in Drilling | Left in Well | Packers           |
|-------------------|------------------|--------------|-------------------|
| Size              |                  |              |                   |
| 16                |                  |              | Kind of Packer -- |
| 13                |                  |              | --                |
| 10                | 380' (Pulled)    |              | Size of --        |
| 8 1/4             | 1379' (Pulled)   |              | --                |
| 6 5/8             | 2173'            |              | Depth set --      |
| 5 3/16            | 2849'            |              | --                |
| 3                 |                  |              | Perf. top --      |
| 2                 |                  |              | Perf. bottom --   |
| Liners Used       |                  |              | Perf. top --      |
|                   |                  |              | Perf. bottom --   |

Open Flow /10ths Water in -- Inch  
/10ths Merc. in -- Inch  
Volume -- Cu. Ft.  
Rock Pressure -- lbs. -- hrs.  
Oil 2 bbls., 1st 24 hrs.  
Fresh water -- feet -- feet  
Salt water 1740 feet -- feet

CASING CEMENTED -- SIZE -- No. Ft. -- Date

COAL WAS ENCOUNTERED AT 770 FEET 60 INCHES  
876 FEET 72 INCHES -- FEET -- INCHES  
-- FEET -- INCHES -- FEET -- INCHES

| Formation        | Color | Hard or Soft | Top  | Bottom | Oil, Gas or Water | Depth Found | Remarks         |
|------------------|-------|--------------|------|--------|-------------------|-------------|-----------------|
| Mapletown Coal   |       |              | 770  | 775    |                   |             |                 |
| Pittsburgh Coal  |       |              | 876  | 882    |                   |             |                 |
| Little Dunkard   |       |              | 1245 | 1328   |                   |             |                 |
| Big Dunkard      |       |              | 1368 | 1500   |                   |             |                 |
| Gas Sand         |       |              | 1575 | 1650   |                   |             |                 |
| First Salt Sand  |       |              | 1690 | 1775   |                   |             |                 |
| Second Salt Sand |       |              | 1895 | 1960   | Water             | 1740        |                 |
| Maxon Sand       |       |              | 2005 | 2143   |                   |             |                 |
| Big Lime         |       |              | 2143 | 2205   | Oil-show          | 2114        |                 |
| Big Injun        |       |              | 2205 | 2335   |                   |             |                 |
| Fifty Foot Sand  |       |              | 2822 | 2850   |                   |             | <u>~133 Mcf</u> |
| Thirty Foot      |       |              | 2905 |        | Gas               | 2848        | 10/10 W.2       |
|                  |       |              |      |        | Oil               | 2909        |                 |
| Total Depth      |       |              |      | 2917   |                   |             |                 |

