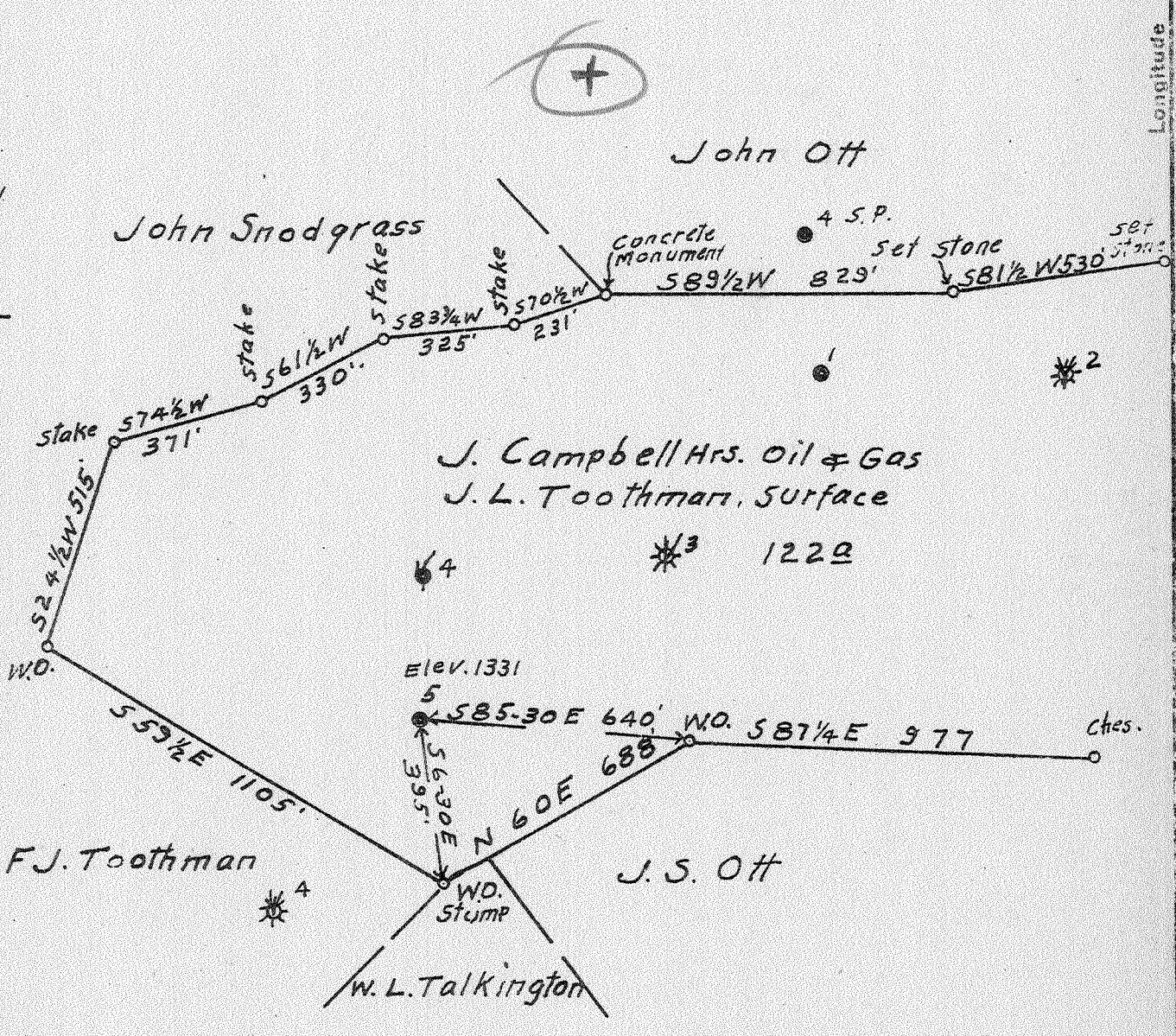


0 1 2 3 Latitude 9 35  
 1 Longitude 80 25  
 2  
 3



3.45W  
 2.20S  
 3.5W  
 2.26  
 JUL - 51942

Company Pittsburg Oil & Gas Co.  
 Address 841 Oliver Bldg. Pittsburg, Pa.  
 Farm J. Campbell Hrs.  
 Tract 1 Acres 122 Lease No. \_\_\_\_\_  
 Well (Farm) No. 5 Serial No. \_\_\_\_\_  
 Elevation (Spirit Level) 1331  
 Quadrangle Mannington  
 County Marion District Mannington  
 Engineer G.D. Nutter  
 Engineer's Registration No. \_\_\_\_\_  
 File No. \_\_\_\_\_ Drawing No. \_\_\_\_\_  
 Date June 18, 1942 Scale 1" = 400'

STATE OF WEST VIRGINIA  
 DEPARTMENT OF MINES  
 OIL AND GAS DIVISION  
 CHARLESTON

WELL LOCATION MAP  
 FILE NO. Mar-360-A

+ Denotes location of well on United States Topographic Maps, scale 1 to 62,500. latitude and longitude lines being represented by border lines as shown.

- Denotes one inch spaces on border line of original tracing.

WEST VIRGINIA DEPARTMENT OF MINES  
OIL AND GAS DIVISION

442

WELL RECORD

Drilled in  
Permit No. June, 1917.

Oil or Gas Well Oil  
(Kind)

Company PITTSBURGH OIL & GAS CO. (Southern Oil Co.)  
 Address 341 Oliver Bldg., Pittsburgh, Penna.  
 Farm Jno. Campbell Hrs. Acres 123.00  
 Location (waters) -  
 Well No. 5 Elev. 1331  
 District Marion County Marion  
 The surface of tract is owned in fee by Jno. Campbell Hrs. Address Marion, W. Va.  
 Mineral rights are owned by Same as above. Address -  
 Drilling commenced June, 1917.  
 Drilling completed Oct. 13, 1917.  
 Date shot Jan. 20, 1918 Depth of shot 2192'-2182'  
 Open Flow /10ths Water in Inch  
/10ths Merc. in Inch  
 Volume 500,000\* (thru 2" opening in 8 1/2") Cu. Ft.  
 Rock Pressure 90\* lbs. hrs.  
 Oil 50 bbls. bbls., 1st 24 hrs.  
 Fresh water - feet - feet  
 Salt water - feet - feet

| Casing and Tubing | Used in Drilling | Left in Well | Packers        |
|-------------------|------------------|--------------|----------------|
| Size              |                  |              | Kind of Packer |
| 16.               |                  |              |                |
| 13.               |                  |              |                |
| 10.               | 2 1/2"           | 8 5/8"       | Size of        |
| 8 1/4             | 1 6/10"          | 7 10"        |                |
| 6 5/8             | 2 0 5/8"         | 2 0 5/8"     | Depth set      |
| 5 3/16            |                  |              |                |
| 3.                |                  |              | Perf. top      |
| 2.                | 2 1/2"           | 2 1/2"       | Perf. bottom   |
| Liners Used       | 5 3/16 at        | 2219-2329    | Perf. top      |
|                   |                  |              | Perf. bottom   |

CASING CEMENTED \_\_\_\_\_ SIZE \_\_\_\_\_ No. FT. \_\_\_\_\_ Date \_\_\_\_\_  
 COAL WAS ENCOUNTERED AT \_\_\_\_\_ FEET \_\_\_\_\_ INCHES  
 \_\_\_\_\_ FEET \_\_\_\_\_ INCHES FEET \_\_\_\_\_ INCHES  
 \_\_\_\_\_ FEET \_\_\_\_\_ INCHES FEET \_\_\_\_\_ INCHES

| Formation                  | Color | Hard or Soft | Top   | Bottom           | Oil Gas or Water | Depth Found | Remarks |
|----------------------------|-------|--------------|-------|------------------|------------------|-------------|---------|
| Little Dunkard             |       |              | 1140' | 1170'            |                  |             |         |
| Maxon                      |       |              | 2255' | 2320'            |                  |             |         |
| Oil                        |       |              | 2280' | 2292'            |                  |             |         |
| 2nd Oil                    |       |              | 2303' | 2305'            |                  |             |         |
| <del>Bottom of Maxon</del> |       |              |       | <del>2320'</del> |                  |             |         |
| Big Injun                  |       |              | 2411' |                  |                  |             |         |
| Break                      |       |              | 2415' | 2420'            |                  |             |         |
| White Sand                 |       |              | 2426' |                  |                  |             |         |
| Gas                        |       |              | 2432' |                  |                  |             |         |
| Oil and Gas                |       |              | 2436' |                  |                  |             |         |
| Total Depth                |       |              |       | 2439'            |                  |             |         |

