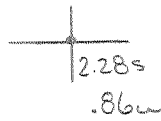


39°30'00"

Latitude

80°20'00"

Longitude



Topo Location

7.5' Loc. \_\_\_\_\_ 15' Loc. \_\_\_\_\_  
 \_\_\_\_\_ (calc.) \_\_\_\_\_

Company \_\_\_\_\_

Farm \_\_\_\_\_

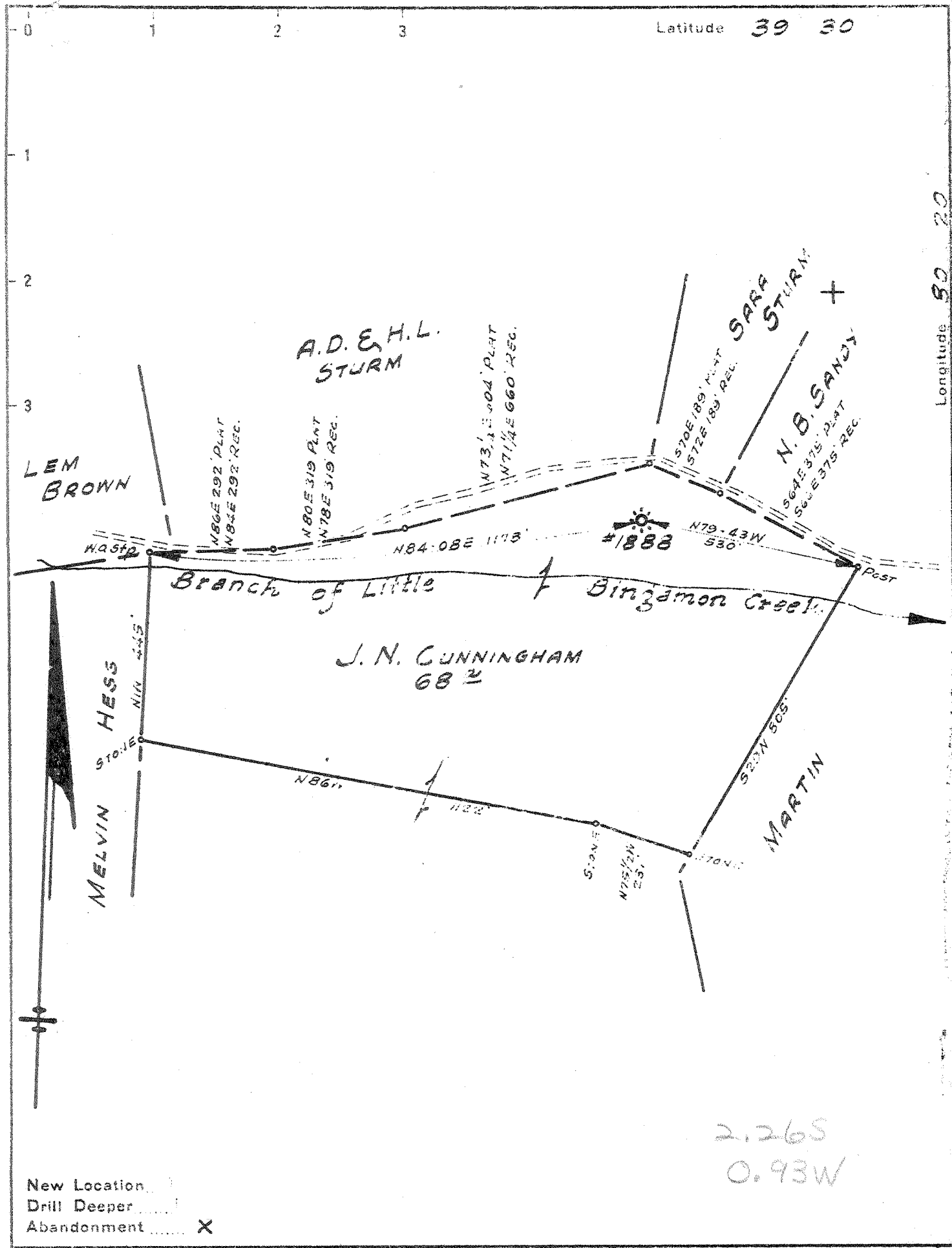
15' Quad \_\_\_\_\_  
(sec.)

7.5' Quad Shumston

District Mamington

WELL LOCATION PLAT

County 049 Permit 30383



New Location   
 Drill Deeper   
 Abandonment  X

2.26S  
 0.93W

Company PITTSBURGH E. W. VA. GAS CO.  
 Address CLARKSBURG, W. VA.  
 Farm J. N. CUNNINGHAM  
 Tract \_\_\_\_\_ Acres 68 Lease No. 8230  
 Well (Farm) No. ONE Serial No. 1888  
 Elevation (Spirit Level) 1056' V.A.  
 Quadrangle CLARKSBURG N.E. 19  
 County MARION District MANNINGTON  
 Engineer Robert Johnson  
 Engineer's Registration No. \_\_\_\_\_  
 File No. V-123, P-98 Drawing No. \_\_\_\_\_  
 Date JUNE 17, 1943 scale 1" = 300'

STATE OF WEST VIRGINIA  
 DEPARTMENT OF MINES  
 OIL AND GAS DIVISION  
 CHARLESTON

WELL LOCATION MAP  
 FILE NO. MAR-383-A

+ Denotes location of well on United States Topographic Maps, scale 1 to 62,500, latitude and longitude lines being represented by border lines as shown.

- Denotes one inch spaces on border line of original tracing.

Record of Well No. *1898* Located on *J. N. Cunningham* Farm *Apr 20* 1906  
*Mannington* District *Marion* County *W. Va* State  
 Division *D* District No. *11* Drilled under Well Order  
 Rig built by *John Craig* Began *April 27* 1906 Completed *April 30* 1906  
 Well drilled by *Wm Bernhart* Began *May 16* 1906 Completed *June 21* 1906  
 Depth of Well *2700* feet Size of Hole *6 7/8* Producing *Gas*  
 Elev: *1056 C*

CASED WITH REMARKS

AMOUNT	SIZE	KIND	REMARKS
<i>16</i>	<i>1 3/4</i>	<i>Wood</i>	
<i>230</i>	<i>10"</i>	<i>New</i>	
<i>805</i>	<i>8 1/4</i>	<i>"</i>	<i>Reclaimed 805 ft 8 1/4" June 25-06</i>
<i>1585</i>	<i>6 7/8</i>	<i>"</i>	
<i>2704</i>	<i>3"</i>	<i>"</i>	

COAL VEINS *Mapletown 175 - 180* *agh 293 to 303*  
 FORMATIONS

NAME	TOP	BOTTOM	OIL	GAS	WATER	REMARKS
<i>Shunkard</i>	<i>800</i>	<i>900</i>				
<i>Gas sand</i>	<i>995</i>	<i>1125</i>				<i>Chula Co furnished Gas for Shilling</i>
<i>Coal</i>	<i>1095</i>	<i>1100</i>				
<i>Salt sand</i>	<i>1200</i>	<i>1355</i>				
<i>Big lime</i>	<i>1570</i>					
<i>" C. m. m.</i>	<i>1633</i>	<i>1805</i>		<i>1730</i>		
<i>Fifth foot</i>	<i>2200</i>	<i>2285</i>				
<i>Thin</i>	<i>2300</i>	<i>2325</i>				
<i>Gordon stray</i>	<i>2460</i>	<i>2480</i>		<i>2490</i>		<i>Well bailed out Aug. 8, 1917. did not help well one bit.</i>
<i>" sand</i>	<i>2485</i>	<i>2515</i>		<i>2490</i>		
<i>Fourth</i>	<i>2515</i>	<i>2520</i>		<i>2520</i>		
<i>Fifth</i>	<i>2675</i>	<i>2678</i>		<i>2676</i>		

FIRST PRESSURE TEST IN		CASING	REMARKS
30 Sec.	lbs.		
1 Min.	"		
2 "	"		
	"		
	"		
30 "	"		
Rock Pressure	" in		
Taken	19		
By			

WELL TUBED AND PACKED *6-20* 19*06*

VIZ:- *2704 ft of 3" Tubing*

FIRST PRESSURE TEST IN		TUBING	REMARKS
30 Sec.	lbs.		
1 Min.	"		
2 "	"		
5 "	"		
10 "	"		
15 "	"		
30 "	"		
Rock Pressure	" in		
Taken	19		
By			

MATERIAL FOR THIS WELL RECEIVED FROM FOLLOWING SOURCES:

Blank area for listing material sources, with faint horizontal lines visible.