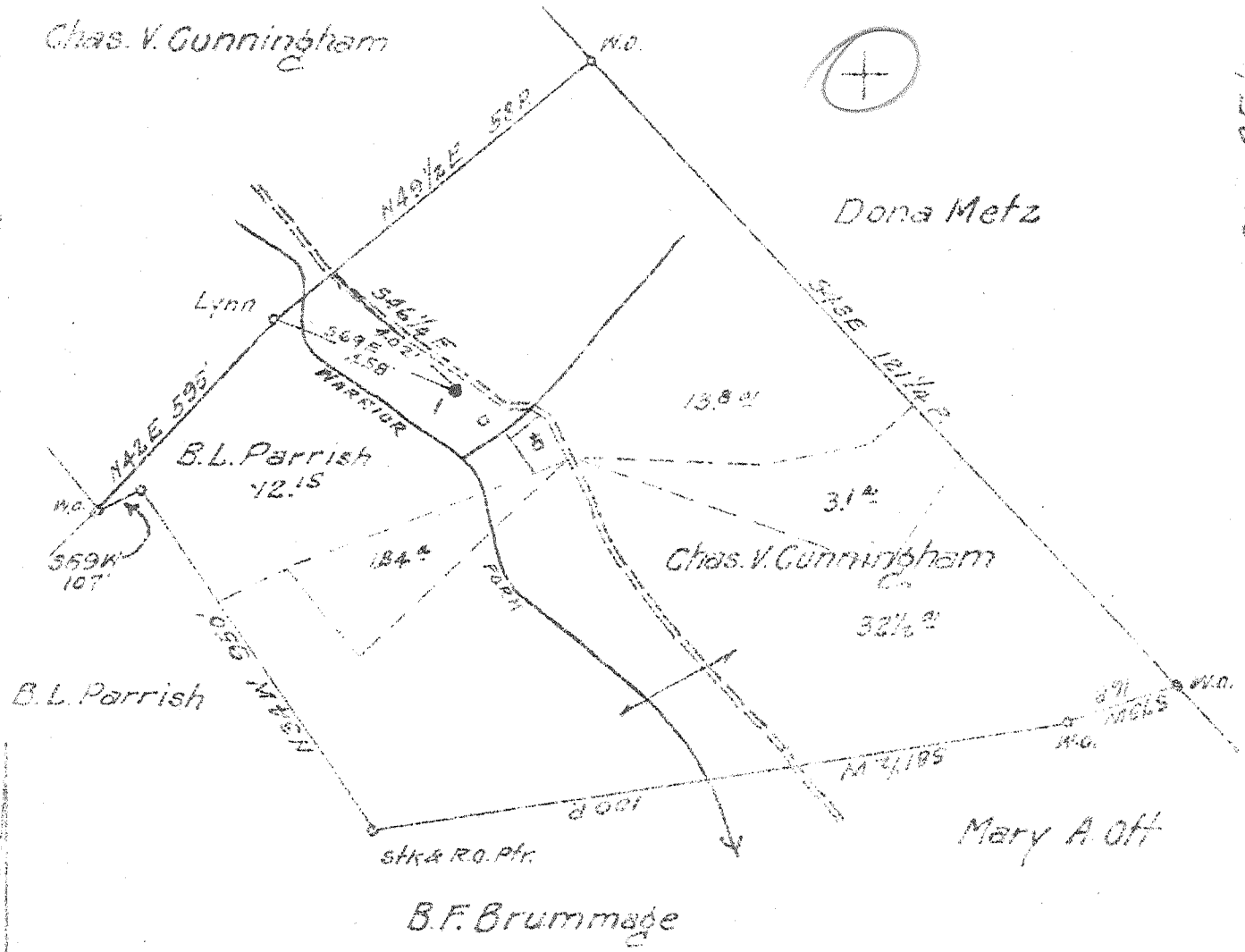


Latitude 9. 55



Coal: State of West Virginia.
 Surface: B. L. Parrish
 Mannington, W. Va.
 R.F.D. #6

Well Location
 Drill Deeper
 Abandonment

1.32S
 FEB 15 1944
 2.33W N8 E9-10 Map N69

Company South Penn Natural Gas Co.
 Address Parkersburg W. Va.
 Farm J. A. Hawkinberry
 Tract _____ Acres 65 Lease No. 48812
 Well (Farm) No. 1 Serial No. _____
 Elevation (Spirit Level) 1066.21
 Quadrangle Mannington **(SW)**
 County Marietta District Mannington
 Engineer E. C. Tabler
 Engineer's Registration No. _____
 Well No. _____ Drawing No. _____
 Date 12-13-43 Scale 1" = 400'

STATE OF WEST VIRGINIA
 DEPARTMENT OF MINES
 OIL AND GAS DIVISION
 CHARLESTON

WELL LOCATION MAP
 FILE NO. MAR-392-A

+ Denotes location of well on United States Topographic Maps, scale 1 to 62,500, latitude and longitude lines being represented by border lines as shown.
 - Denotes one inch spaces on border line of original tracing.



STATE OF WEST VIRGINIA
DEPARTMENT OF MINES
OIL AND GAS DIVISION

470

WELL RECORD

Permit No. 397-A

Oil or Gas Well OIL
(KIND)

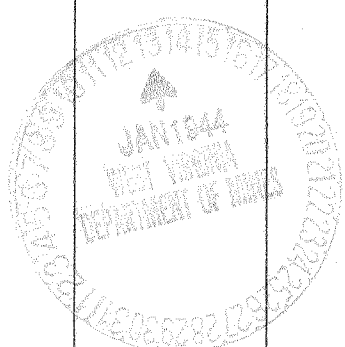
Company South Penn Natural Gas Company
Address Union Trust Bldg. Parkersburg, W. Va.
Farm J. A. Hawkinberry Acres 65
Location (waters) Warrior Fork of Buffalo Creek
Well No. 1 Elev. 1066.21
District Mannington County Marion
The surface of tract is owned in fee by B. L. Parrich
R. D. No. 6 Address Mannington, W. Va.
Mineral rights are owned by George W. Bowers et al
Address Mannington, W. Va.
Drilling commenced Apr. 1, 1910
Drilling completed June 12-1910
Date Shot 3-27-13 From 2044 To -----
12-4-16 From 2043 To -----
With 1st- 15 Qts.; 2d 20 Qts.

| Casing and Tubing | Used in Drilling | Left in Well | Packers |
|-------------------|------------------|--------------|----------------|
| Size | | | Kind of Packer |
| 16 | | | ----- |
| 13 | 91' | | ----- |
| 10 | 1301' | | Size of |
| 8 3/4 | 1848' | | ----- |
| 6 3/4 | 1956' | | Depth set |
| 5 3/16 | | | ----- |
| 3 | | | Perf. top |
| 2 | | | Perf. bottom |
| Liners Used | | | Perf. top |
| Cond. | 16' | | Perf. bottom |

Open Flow /10ths Water in ----- Inch
/10ths Merc. in ----- Inch
Volume ----- Cu. Ft.
Rock Pressure ----- lbs. ----- hrs.
Oil ----- bbls., 1st 24 hrs.
Fresh water ----- feet ----- feet
Salt water ----- feet ----- feet

CASING CEMENTED ----- SIZE ----- No. Ft. ----- Date -----
COAL WAS ENCOUNTERED AT 150 FEET 36 INCHES
810 FEET 60 INCHES 892 FEET 60 INCHES
----- FEET ----- INCHES ----- FEET ----- INCHES

| Formation | Color | Hard or Soft | Top | Bottom | Oil, Gas or Water | Depth Found | Remarks |
|------------------|-------|--------------|------|--------|-------------------|-------------|---------|
| Coal, Native, | | | 150 | 153 | | | |
| Coal, Mapletown | | | 810 | 815 | | | |
| Coal, Pittsburgh | | | 892 | 897 | | | |
| Little Dunkard | | | 1225 | 1330 | | | |
| Big Dunkard | | | 1370 | 1420 | | | |
| Gas Sand | | | 1650 | 1680 | | | |
| Salt Sand | | | 1785 | -- | | | |
| Salt Sand | | | 1863 | 1950 | | | |
| Maxon Sand | | | 2026 | 2054 | | | |
| | | | | | Gas | 2032 | |
| | | | | | Oil | 2035 | |
| | | | | | Oil | 2045 | |
| Total Depth | | | | 2057 | | | |



AUG 17 1944

