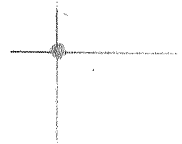


LATITUDE 39 32 30

LONGITUDE 80 22 30



2.576
.5W

7'5 OGIS topo location

7.5' loc _____ 15' loc _____
_____ (calc.) _____

Company _____

Farm J D HOBERT

Quad GLOVER GAP

County MORRIS

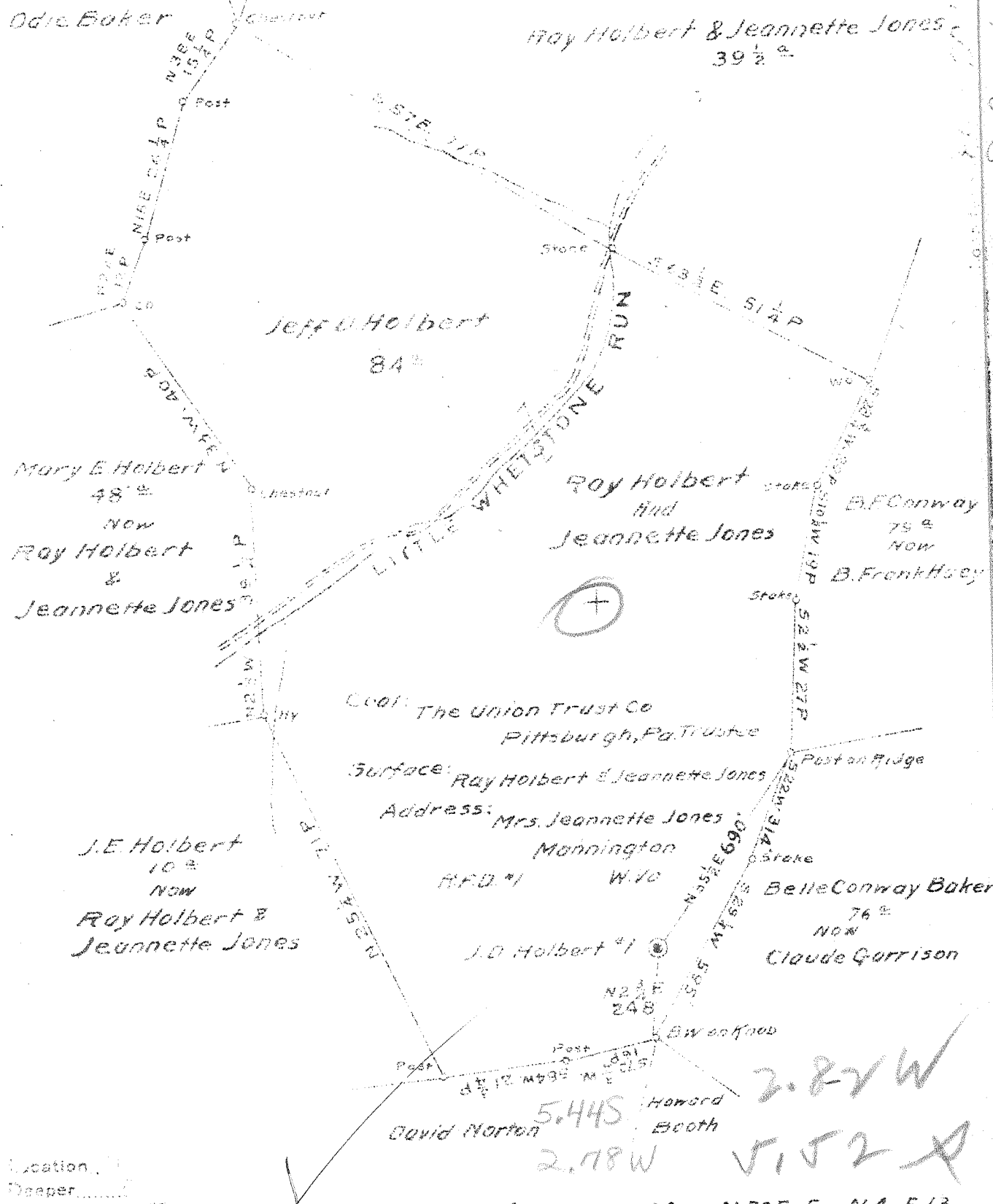
District MANNINGTON

WELL LOCATION MAP

File No. 30393

Latitude 39° 35'

10020



COOL: The Union Trust Co
Pittsburgh, Pa. Trustee

Surface: Ray Holbert & Jeannette Jones

Address: Mrs. Jeannette Jones
Mannington

R.F.D. #1 W.V.

J.D. Holbert #1

5.44S
2.78W
2.82W
5.52A

Well Location
D. I. Deaper
Revisedment X

Map N 50 E 5 q N 4 E 13

Company South Penn Nat Gas Co

Address Parkersburg W. Va.

Farm J.D. Holbert

Tract _____ Acres 85 Lease No. 59209

Well (Farm) No. 1 Serial No. _____

Elevation (Spirit Level) 1493.93

Quadrangle Mannington

County Marion District Mannington

Engineer E.C. Tabler

Engineer's Registration No. _____

File No. _____ Drawing No. _____

Date 12-22-43 Scale 400' = 1"

STATE OF WEST VIRGINIA
DEPARTMENT OF MINES
OIL AND GAS DIVISION
CHARLESTON

WELL LOCATION MAP
FILE NO. MAR-393-A

+ Denotes location of well on United States Topographic Maps, scale 1 to 62,500, latitude and longitude lines being represented by border lines as shown.

- Denotes one inch spaces on border line of original tracing.

J.D. HOLBERT NO. 1 - SOUTH PENN N.G. Co. - MAR-393-A

Mannington District, Marion County, W. Va.
By South Penn Oil Co.
2.8 mi. S. W. of Mannington.
Elevation, 1490' B.
8 1/2" casing, 1514'; 6-5/8" casing, 2270' 6".

7

	Top.	Bottom.
Unrecorded (oil, 3203'), to bottom	3200	3228



STATE OF WEST VIRGINIA
DEPARTMENT OF MINES
OIL AND GAS DIVISION

471

WELL RECORD

Permit No. 399 A

Oil or Gas Well OIL
(KIND)

Company South Penn Natural Gas Company
Address Union Trust Bldg. Parkersburg, W. Va.
Farm J. D. Holbert Acres 85
Location (waters) Little Whetstone
Well No. 1 Elev. 1493.93
District Mannington County Marion
The surface of tract is owned in fee by Jeannette Jones et al
R. D. No. 1 Address Mannington, W. Va.
Mineral rights are owned by Jeannette Jones et al
R. D. No. 1 Address Mannington, W. Va.
Drilling commenced 6-25-1904
Drilling completed ---
Date Shot See remarks below From --- To ---
With ---

Casing and Tubing	Used in Drilling	Left in Well	Packers
Size			Kind of Packer
16			
13			
10 1/2"	372 (Pulled)		Size of
8 1/4"	1415'		
6 1/2"	2270' 6"		Depth set
5 3/16"			
3"			Perf. top
2"			Perf. bottom
Liners Used			Perf. top
Cond.	12'		Perf. bottom

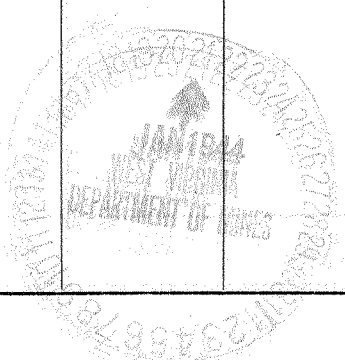
Open Flow /10ths Water in --- Inch
/10ths Merc. in --- Inch
Volume --- Cu. Ft.
Rock Pressure --- lbs --- hrs.
Oil No record bbls., 1st 24 hrs.
Fresh water --- feet
Salt water --- feet

CASING CEMENTED --- SIZE --- No. Ft. --- Date ---
COAL WAS ENCOUNTERED AT 886 FEET 84 INCHES
988 FEET --- INCHES --- FEET --- INCHES
--- FEET --- INCHES --- FEET --- INCHES

Formation	Color	Hard or Soft	Top	Bottom	Oil, Gas or Water	Depth Found	Remarks
Mapletown Coal			886	893			
Pittsburgh Coal			988	996?			
Little Dunkard			1370	1422	035		
Big Dunkard			1478	1510			
Salt Sand			2105	2145	1570		
Big Lime			2260	2271			
Big Injun			2331	2440			
Fifty Foot			2865	2920	Oil & Gas	2415	Show
Thirty Foot			2920	2955			
Stray Sand			3156				
Gordon Sand			3198				
Total Depth				3228	1st Pay	3203	

SHOT RECORD:

No date 20 qt.
" " 40 "
1-8-1919 60 " Top 3203'



Formation	Color	Hard or Soft	Top	Bottom	Oil, Gas or Water	Depth Found	Remarks

Date January 20, 1944., 194
APPROVED SOUTH LENN NATURAL GAS COMPANY, Owner
By Elton Blount Land Agent
(Title)