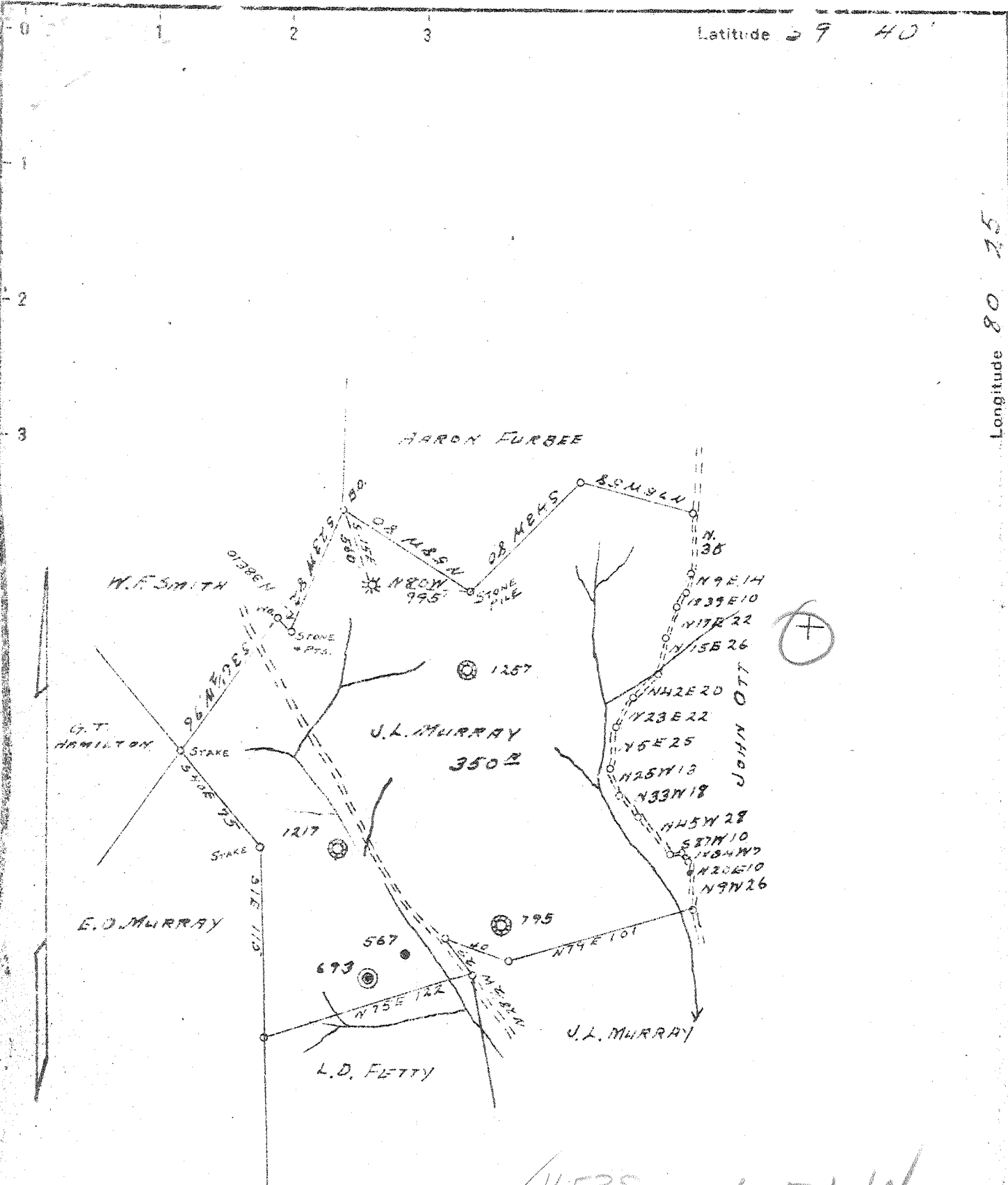


Latitude 39 40'

Longitude 80 35'



New Location  
 Drill Deeper  
 Abandonment

4.53S  
 1.50W  
 DEC 19 1944  
 1.51W  
 4.6

Company CARNEGIE NATURAL GAS CO.  
 Address PITTSBURGH, PA.  
 Farm J. L. MURRAY  
 Tract ONE Acres 350 Lease No. E-4378-41  
 Well (Farm) No. 4 Serial No. 1154  
 Elevation (Spirit Level) 1517'  
 Quadrangle MANNINGTON S.W.  
 County MARION District MANNINGTON  
 Engineer D.T. BRITTON  
 Engineer's Registration No. \_\_\_\_\_  
 File No. \_\_\_\_\_ Drawing No. \_\_\_\_\_  
 Date 11-9-1944 Scale 1" = 1320'

STATE OF WEST VIRGINIA  
 DEPARTMENT OF MINES  
 OIL AND GAS DIVISION  
 CHARLESTON

**WELL LOCATION MAP**  
 FILE NO. MAR-410-A

+ Denotes location of well on United States Topographic Maps, scale 1 to 62,500, latitude and longitude lines being represented by border lines as shown.  
 - Denotes one inch spaces on border line original tracing.



484

STATE OF WEST VIRGINIA  
DEPARTMENT OF MINES  
OIL AND GAS DIVISION

WELL RECORD

Permit No. 410-A

WELL TO BE ABANDONED

Oil or Gas Well GAS  
(KIND)

Company CARNEGIE NATURAL GAS COMPANY  
 Address 1015 FRICK BLDG., PITTSBURGH, PA.  
 Farm JACOB L. MURRAY Acres 350  
 Location (waters) \_\_\_\_\_  
 Well No. 4-1154 Elev. 1517  
 District MANNINGTON County MARION  
 The surface of tract is owned in fee by JOHN W. JONES  
Route #1, Address, MANNINGTON, W. VA.  
 Mineral rights are owned by Jacob L. Murray heirs, by  
C.B. Murray, Atty-in-Fact,  
Sarah G. Bowers, Route #1, Fairmont, W. Va.  
 Address Mannington, W. Va.  
 Drilling commenced 4-30-23  
 Drilling completed 8-3-23  
 Date Shot 6-6-23 From 2361 To 2382  
 With 20 cts.  
 Open Flow 4 /10ths Water in 6-5/8 Inch  
 \_\_\_\_\_ /10ths Merc. in \_\_\_\_\_ Inch  
 Volume 998,000 Cu. Ft.  
 Rock Pressure \_\_\_\_\_ lbs \_\_\_\_\_ hrs.  
 Oil \_\_\_\_\_ bbls., 1st 24 hrs.  
 Fresh water \_\_\_\_\_ feet \_\_\_\_\_ feet  
 Salt water 2,002 feet \_\_\_\_\_ feet

Casing and Tubing	Used in Drilling	Left in Well	Packers
Size			
16			Kind of Packer
18			<u>Anchor</u>
10	<u>303'</u>	<u>None</u>	Size of
8 1/4	<u>170 1/2'</u>	<u>170 1/2'</u>	<u>5-3/16" x 2"</u>
6 3/4	<u>245 1/2'</u>	<u>245 1/2'</u>	Depth set
5 3/16			<u>338 1/2'</u>
3			Perf. top
2		<u>3413'</u>	Perf. bottom
Liners Used	<u>5-3/16"</u>	<u>130'</u>	Perf. top
			Perf. bottom

CASING CEMENTED \_\_\_\_\_ SIZE \_\_\_\_\_ No. Ft. \_\_\_\_\_ Date \_\_\_\_\_  
 COAL WAS ENCOUNTERED AT \_\_\_\_\_ FEET \_\_\_\_\_ INCHES  
 \_\_\_\_\_ FEET \_\_\_\_\_ INCHES \_\_\_\_\_ FEET \_\_\_\_\_ INCHES  
 \_\_\_\_\_ FEET \_\_\_\_\_ INCHES \_\_\_\_\_ FEET \_\_\_\_\_ INCHES

Formation	Color	Hard or Soft	Top	Bottom	Oil, Gas or Water	Depth Found	Remarks
Mapleton Coal			1120'	1123'			
Pittsburgh Coal			1215	1223			
Little Dunkard			1619	1654			
Big Dunkard			1690	1734			
Gas Sand			1840	1865			
1st Salt Sand			1975	2012	Water	2002'	
2nd Salt Sand			2024	2065			
3rd Salt Sand			2146	2200			
Maxton Sand			2329	2370			
Little Lime			2402	2412			
Pencil Cave			2412	2415			
Big Lime			2415	2495			
Big Injun			2495	2645			
50-Foot Sand			3145	3190			
30-Foot Sand			3260	3285			
Gordon Stray			3315	3335			
Gordon Sand			3340	3362			
Fourth Sand			3380	3407	Gas at	3388'-3398'	
					Show of Oil	3396'	
TOTAL DEPTH				3413'			

