

JAMES EDDY

J.A. MASON THOS. DICKEN

5046  
EL. 1052

1972  
EL. 1156

WESLEY WILSON

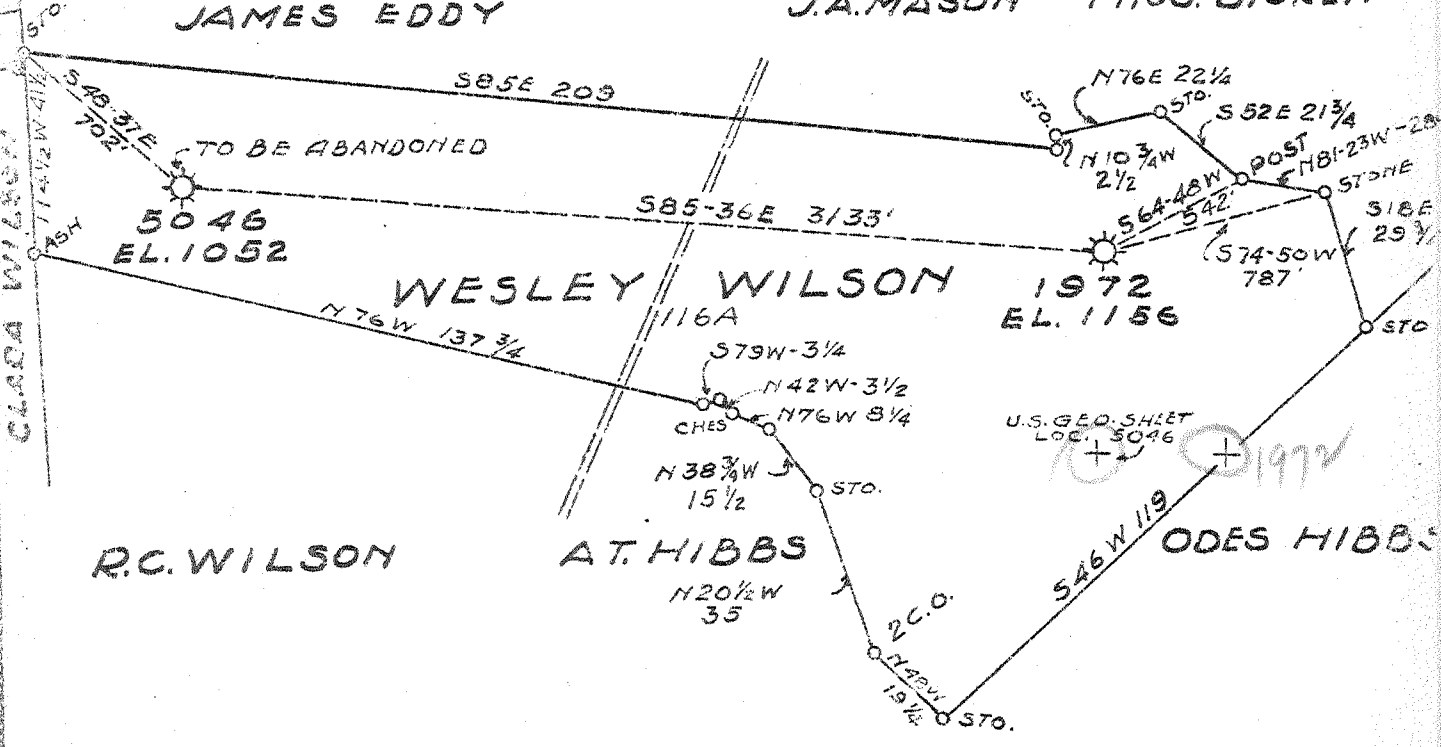
R.C. WILSON

A.T. HIBBS

ODES HIBBS

CLARA WILSON

Longitude 80 10



U.S. GEO. SHEET  
LOC. 5046

#1972 1.11W  
 5.31S 5.42  
 1.11W  
 5.27S #5046 1.78W  
 1.76W 5.35

AUG - 6 1945

ABANDONMENT

BK. 645 PG. 18-19

Company HOPE NATURAL GAS CO.  
 Address CLARKSBURG, W. VA.  
 Farm WESLEY WILSON  
 Tract 1 Acres 116 Lease No. 20689  
 Well (Farm) No. 2 Serial No. 5046  
 Elevation (Spirit Level) EL. 1052 1156  
 Quadrangle BLACKSVILLE  
 County MARION District PAW PAW  
 Engineer CH Bradley  
 Engineer's Registration No. 135  
 File No. \_\_\_\_\_ Drawing No. \_\_\_\_\_  
 Date APR. 9, 1937 Scale 1" = 40P

STATE OF WEST VIRGINIA  
 DEPARTMENT OF MINES  
 OIL AND GAS DIVISION  
 CHARLESTON

WELL LOCATION MAP  
 FILE NO. MAR-164 A  
MAR-421-A-1972

+ Denotes location of well on United States Topographic Maps, scale 1 to 62,500, latitude and longitude lines being represented by border lines as shown.

- Denotes one inch spaces on border line of original tracing.

from 1945 annual report.

NO



STATE OF WEST VIRGINIA  
DEPARTMENT OF MINES  
OIL AND GAS DIVISION



WELL RECORD

Permit No. Y-2-A

Oil or Gas Well (KIND)

Company Hope Natural Gas Company.  
 Address 445 West Main St. Clarksburg, W. Va.  
 Farm Wesley Wilson Acres 116  
 Location (waters) \_\_\_\_\_  
 Well No. 1972 Elev. 1156  
 District Paw Paw County Marion  
 The surface of tract is owned in fee by \_\_\_\_\_  
 Address \_\_\_\_\_  
 Mineral rights are owned by \_\_\_\_\_  
 Address \_\_\_\_\_  
 Drilling commenced November 3, 1910  
 Drilling completed December 5, 1910  
 Date Shot \_\_\_\_\_ From \_\_\_\_\_ To \_\_\_\_\_  
 With \_\_\_\_\_  
 Open Flow \_\_\_\_\_ /10ths Water in \_\_\_\_\_ Inch  
 \_\_\_\_\_ /10ths Merc. in \_\_\_\_\_ Inch  
 Volume \_\_\_\_\_ Cu. Ft.  
 Rock Pressure \_\_\_\_\_ lbs. \_\_\_\_\_ hrs.  
 Oil \_\_\_\_\_ bbls., 1st 24 hrs.  
 Fresh water \_\_\_\_\_ feet \_\_\_\_\_ feet  
 Salt water 1470 1540-1726 feet \_\_\_\_\_ feet

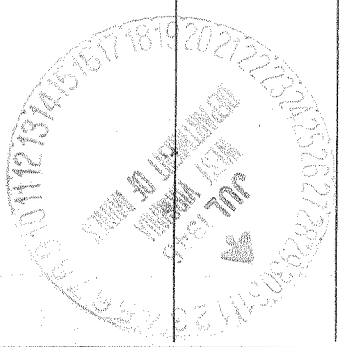
Casing and Tubing	Used in Drilling	Left in Well	Packers
Size			
16			Kind of Packer
13			
10	925	925	Size of
8 1/4	1519	1519	
6 5/8	1800	1800	Depth set
5 3/16			
3			Perf. top
2	2406	Pulled	Perf. bottom
Liners Used			Perf. top
			Perf. bottom

Not cemented

CASING CEMENTED \_\_\_\_\_ SIZE \_\_\_\_\_ No. Ft. \_\_\_\_\_ Date \_\_\_\_\_

COAL WAS ENCOUNTERED AT 130 FEET 48 INCHES  
510 FEET 96 INCHES FEET INCHES  
 FEET INCHES FEET INCHES

Formation	Color	Hard or Soft	Top	Bottom	Oil, Gas or Water	Depth Found	Remarks
Native coal			130	134			
Pittsburgh Coal			510	518			
Little Dunkard			925	992			
Big Dunkard			1040	1170			
Gas sand			1280	1390			
First Salt			1375	1545	water	1470	
Second Salt			1630	1645	water	1540	
Maxon			1712	1778	water	1726	
Pencil cave			1778	1732			
Big Lime			1732	1800			
Big Injun			1800	?	gas	1813	
Fifty foot			2350	2472	gas	2357- 2359	
Gordon			2691	2702			
Fourth			2747	2788			
Fifth			2881	2910	gas	2890	
Bayard			2890	2995			
Total depth				<del>2995</del>			
Filled back to				2406			



(Over)

AUG - 8 1945

