

Latitude

Longitude

+-----+  
.98s
1.93w
 +-----+

Topo Location

7.5' Loc. \_\_\_\_\_ 15' Loc. \_\_\_\_\_  
 \_\_\_\_\_ (calc.) \_\_\_\_\_

Company Eshenbaugh O+G

Farm J C Neodoy #1

15' Quad \_\_\_\_\_  
(sec.)

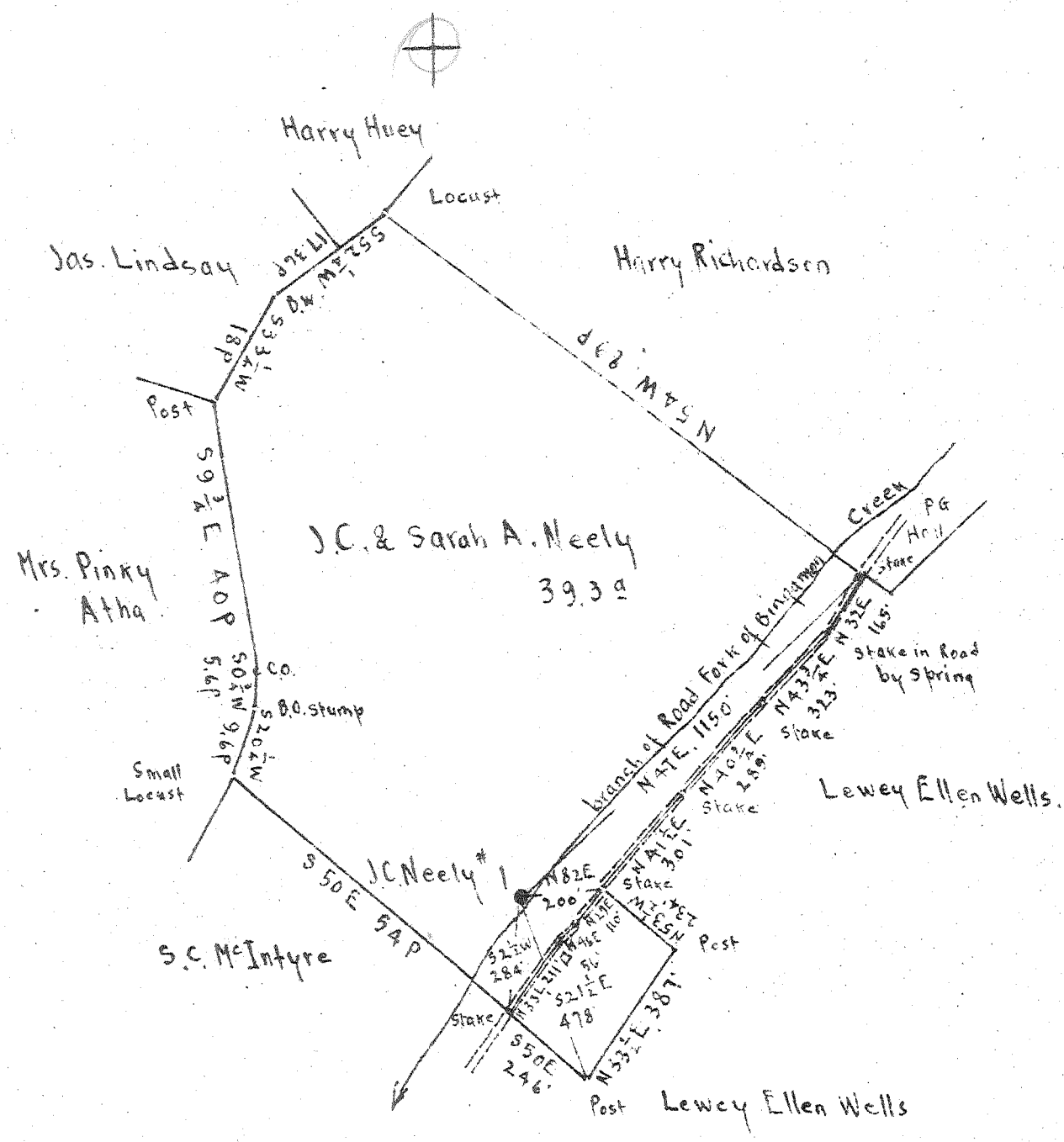
7.5' Quad Wallace

District Mammington

WELL LOCATION PLAT

County 049 Permit 30490

Scale: 1" = 400 Feet



Surface: J.C. & Sarah A. Neely, R.F.D. #2, Mannington, W.Va.  
 Pittsburgh Coal: Formerly Short Line Fuel Co., 97606  
 now, Willis G. Tetrick Jr. et al., 311 Clay St., Clarksburg, W.Va.

New Location   
 Drill Deeper   
 Abandonment

1105  
 4.13 W  
 NOV 11 1947

Company Eshenbaugh Oil & Gas Co.  
 Address Mannington W.Va  
 Farm J.C. Neely  
 Tract \_\_\_\_\_ Acres 39.30 Lease No. \_\_\_\_\_  
 Well (Farm) No. 1 Serial No. \_\_\_\_\_  
 Elevation (Spirit Level) Floor - 1108.31  
 Ground - 1106.31  
 Quadrangle CLARKSBURG  
 County Marion District Mannington  
 Engineer E.C. Tabler  
 Engineer's Registration No. \_\_\_\_\_  
 File No. \_\_\_\_\_ Drawing No. \_\_\_\_\_  
 Date Oct. 31<sup>st</sup> 1947 Scale 1" = 400 Feet

STATE OF WEST VIRGINIA  
 DEPARTMENT OF MINES  
 OIL AND GAS DIVISION  
 CHARLESTON

WELL LOCATION MAP  
 FILE NO. MAR-490-A

+ Denotes location of well on United States Topographic Maps, scale 1 to 62,500, latitude and longitude lines being represented by border lines as shown.  
 - Denotes one inch spaces on border line of original tracing



577

STATE OF WEST VIRGINIA  
DEPARTMENT OF MINES  
OIL AND GAS DIVISION

WELL RECORD

Permit No. 490-A

Oil or Gas Well OIL  
(KIND)

Company Eshenbaugh Oil & Gas Company  
Address 8 Beaty Ave., Mannington, W. Va.  
Farm J. C. Neely Acres 29.13  
Location (waters) \_\_\_\_\_  
Well No. 1 Elev. 1109.3  
District Mannington County Marion 1106.3  
The surface of tract is owned in fee by J. C. Neely  
Route 2 Address Mannington, W. Va.  
Mineral rights are owned by Willis G. Tetrick, jr.  
311 Clay St. Address Clarksburg, W. Va.  
Drilling commenced 1913  
Drilling completed 1913  
Date Shot \_\_\_\_\_ From \_\_\_\_\_ To \_\_\_\_\_  
With \_\_\_\_\_  
Open Flow /10ths Water in \_\_\_\_\_ Inch  
/10ths Merc. in \_\_\_\_\_ Inch  
Volume \_\_\_\_\_ Cu. Ft.  
Rock Pressure \_\_\_\_\_ lbs. \_\_\_\_\_ hrs.  
Oil \_\_\_\_\_ bbls., 1st 24 hrs.  
Fresh water \_\_\_\_\_ feet \_\_\_\_\_ feet  
Salt water \_\_\_\_\_ feet \_\_\_\_\_ feet

Casing and Tubing	Used in Drilling	Left in Well	Packers
Size			Kind of Packer
16			
13			
10			Size of
8 1/4			
6 5/8	1900'	1900'	Depth set
5 3/16	2295'	2295'	
3			Perf. top
2	2805'	2805'	Perf. bottom
Liners Used			Perf. top
			Perf. bottom

CASING CEMENTED \_\_\_\_\_ SIZE \_\_\_\_\_ No. Ft. \_\_\_\_\_ Date \_\_\_\_\_

COAL WAS ENCOUNTERED AT 520' FEET \_\_\_\_\_ INCHES  
525 FEET \_\_\_\_\_ INCHES 621 FEET \_\_\_\_\_ INCHES  
626 FEET \_\_\_\_\_ INCHES \_\_\_\_\_ FEET \_\_\_\_\_ INCHES

Formation	Color	Hard or Soft	Top	Bottom	Oil, Gas or Water	Depth Found	Remarks
Big Dunkard			1056	1116			
Salt sand			1404	1449			
Maxton			1811	1854			
Pencil cave			1854	1868			
Big lime			1868	1946			
Big Injun			1947	2091			
50 ft.			2551	2596			
30 ft.			2531	2656			
Gordon stray			2771	2798			
Oil			2791	2801			
Total depth				2805			