

Latitude

+
1.68s
2.14w

Longitude

Topo Location

7.5' Loc. _____ 15' Loc. _____
_____ (calc.) _____

Company _____

Farm _____

15' Quad _____
(sec.)

7.5' Quad Glover Gap

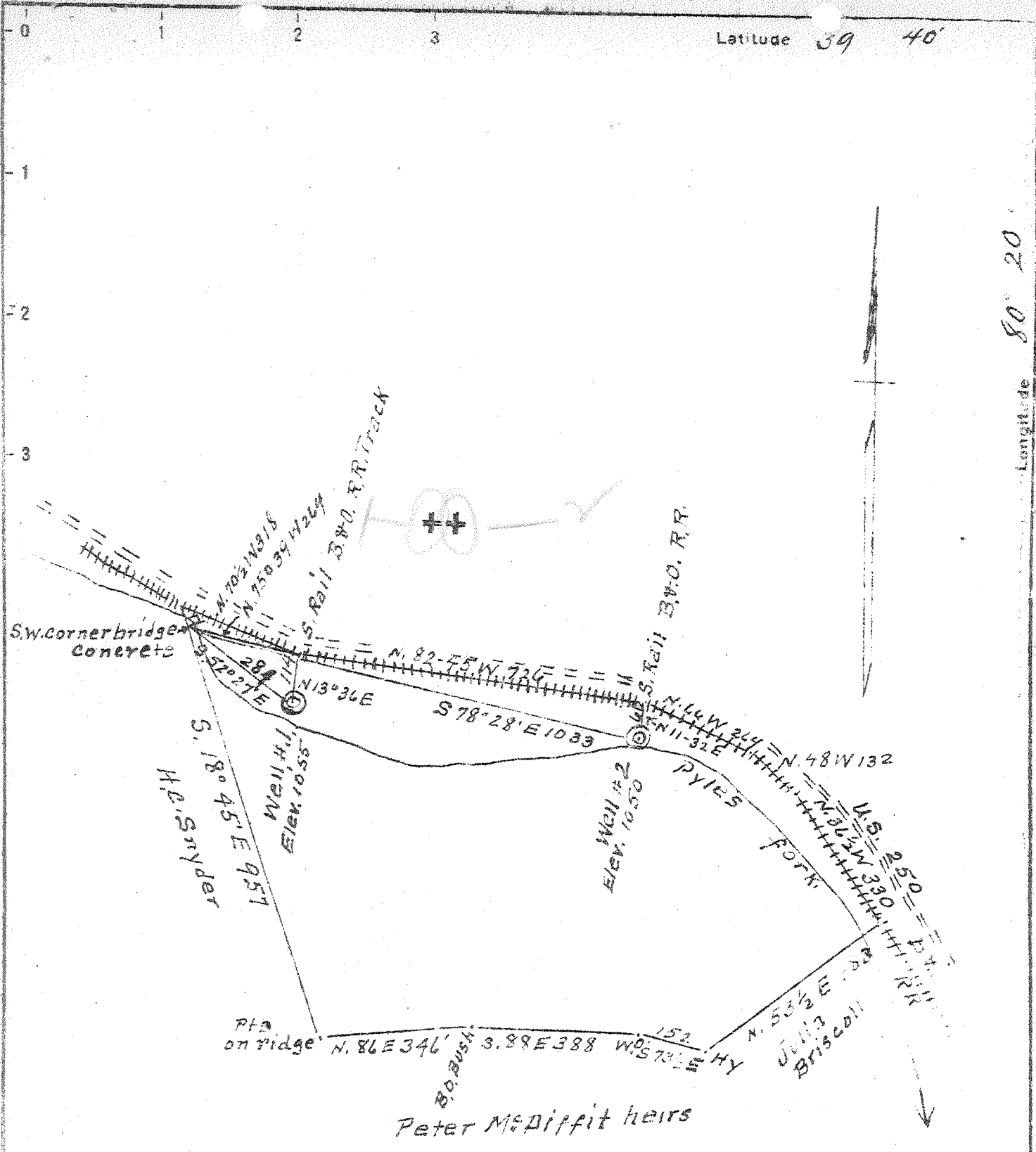
District Mannington

WELL LOCATION PLAT

County 049 Permit 30503

Latitude 39 40

Longitude 80 20



Peter McDuffit heirs

3.73S	#1	4.44 W
4.37W		3.8 x
3.75S	#2	4.20 W
APR 7 1948		3.79 x

New Location
 Drill Deeper
 Abandonment

Company DUNN-MAR Oil & Gas Co.
 Address Waynesburg Pa.
 Farm John Hopkins
 Tract one Acres 20 Lease No. _____
 Well (Farm) No.'s 1 & 2 Serial No. _____
 Elevation (Spirit Level) # 1/1055 No. 2 = 1050
 Quadrangle Mannington
 County Marion District Mannington
 Engineer A. L. Headley
 Engineer's Registration No. _____
 File No. _____ Drawing No. _____
 Date 3-19-1948 Scale 1 inch = 300 ft

STATE OF WEST VIRGINIA
 DEPARTMENT OF MINES
 OIL AND GAS DIVISION
 CHARLESTON

WELL LOCATION MAP
 FILE NO. MAR-503-A-#2

+ Denotes location of well on United States Topographic Maps, scale 1 to 62,500, latitude and longitude lines being represented by border lines as shown.

- Denotes one inch spaces on border line of original tracing



STATE OF WEST VIRGINIA
DEPARTMENT OF MINES
OIL AND GAS DIVISION

679

Ab 503-A

WELL RECORD

Permit No. _____ Oil or Gas Well Oil
(KIND)

Company Dunn-Mar Oil and Gas Co.
 Address Waynesburg, Pa.
 Farm John Hopkins Acres 20
 Location (waters) Pyles Fork
 Well No. Two(2) Elev. 1050'
 District Mannington County Marion
 The surface of tract is owned in fee by _____
 Address _____
 Mineral rights are owned by _____
 Address _____
 Drilling commenced December 16, 1909
 Drilling completed No Record
 Date Shot _____ From _____ To _____
 With _____
 Open Flow _____ /10ths Water in _____ Inch
 _____ /10ths Merc. in _____ Inch
 Volume _____ Cu. Ft.
 Rock Pressure _____ lbs. _____ hrs.
 Oil _____ bbls., 1st 24 hrs.
 Fresh water _____ feet _____ feet
 Salt water _____ feet _____ feet

Casing and Tubing	Used in Drilling	Left in Well	Packers
Size			Kind of Packer
16			
13			
10	308'	Left	Size of
8 1/4	1295'	"	
6 5/8	2094'	"	Depth set
5 3/16	2330'	"	
3			Perf. top
2			Perf. bottom
Liners Used			Perf. top
			Perf. bottom

CASING CEMENTED _____ SIZE _____ No. Ft. _____ Date _____
 COAL WAS ENCOUNTERED AT 749' FEET 60 INCHES
850' FEET 72 INCHES FEET _____ INCHES
 FEET _____ INCHES FEET _____ INCHES

Formation	Color	Hard or Soft	Top	Bottom	Oil, Gas or Water	Depth Found	Remarks
Buff Sand			465'	500'			
Mapletown Coal			749'	754'			
Pittsburgh Coal			850'	856'			
Murphy Sand			1025'	1045'			
Little Dunkard Sand			1275'	1305'			
Big Dunkard Sand			1320'	1365'			
Sand			1450'	1560'			
Gas Sand			1595'	1650'	Water	1635'	
1st Salt Sand			1668'	1710'			
2nd Salt Sand			1798'	1838'			
Red Rock			1925'	2010'			
Little Lime			2050'	2065'			
Big Lime			2075'	2145'			
Big Injun			2145'	2300'			
Squaw Sand			2315'	2330'			
50 Foot Sand			2775'	2840'	Oil	2868'	
30 Foot Sand			2667'				
Total Depth			2864'	2884'			

