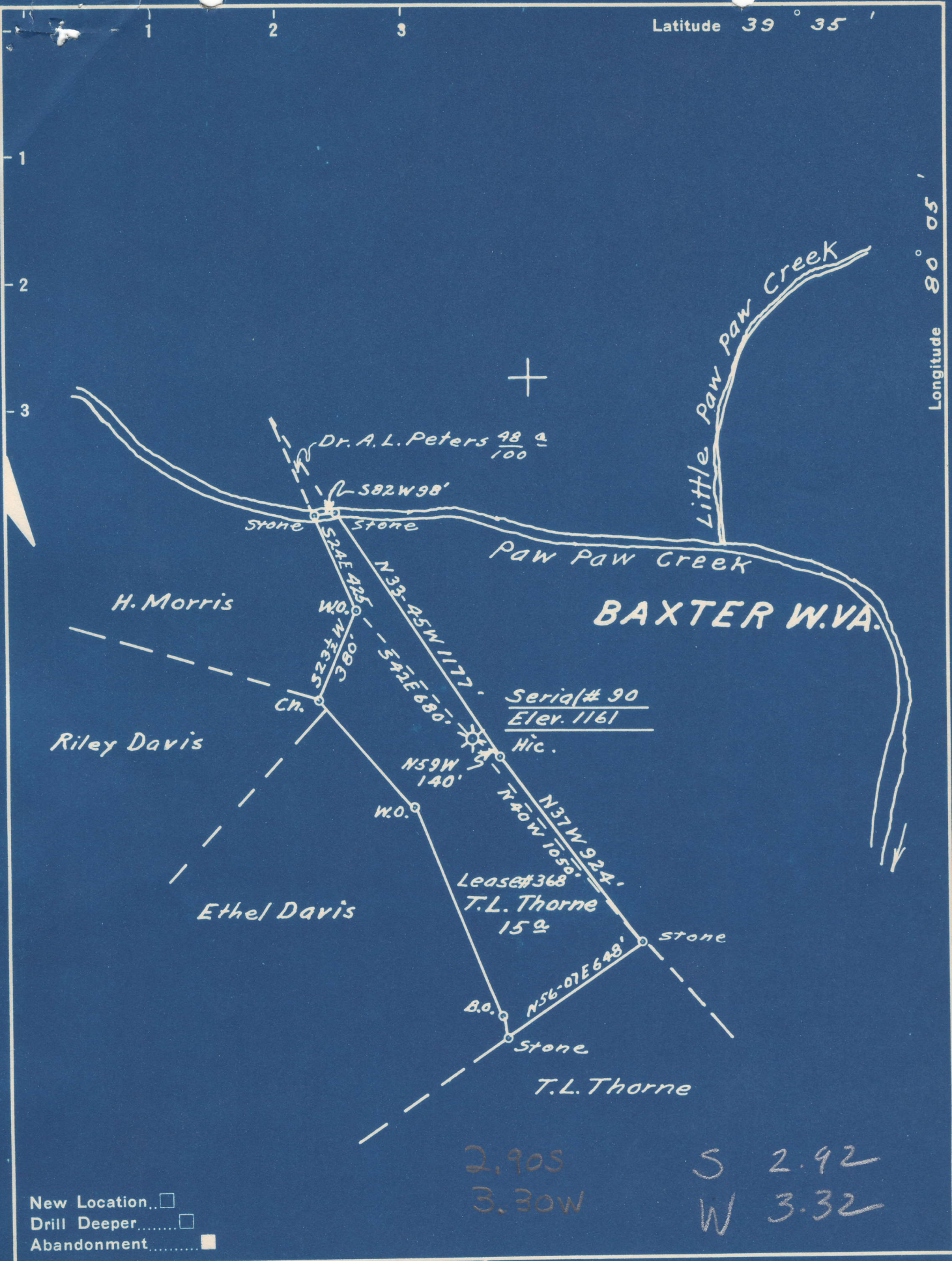


Latitude 39° 35'

Longitude 80° 05'



2.90S
3.30W

S 2.92
W 3.32

New Location
 Drill Deeper
 Abandonment

Company Owens Illinois Glass Co. Gas Dept.
 Address Box 4158 Charleston 4 W. Va.
 Farm T.L. Thorne
 Tract _____ Acres 15 Lease No. 368
 Well (Farm) No. 1 Serial No. 90
 Elevation (Spirit Level) 1161
 Quadrangle Blacksville 8 S 2.92" W 3.38"
 County Marion District Paw Paw
 Engineer T.S. Flournoy
 Engineer's Registration No. 269
 File No. _____ Drawing No. _____
 Date June 5, 1950 Scale 1" = 500'

STATE OF WEST VIRGINIA
 DEPARTMENT OF MINES
 OIL AND GAS DIVISION
 CHARLESTON

WELL LOCATION MAP
 FILE NO. MAR-663-A-1

+ Denotes location of well on United States Topographic Maps, scale 1 to 62,500, latitude and longitude lines being represented by border lines as shown.
 - Denotes one inch spaces on border line of original tracing.

663A

Pawpaw District, Marion County, W. Va.

By Wilhelm & Jackson, Hamlin, W. Va.

Abandoned under permit Mar-.....-A?

On 15 acres.

Surface owned by The Consolidation Coal Co., Fairmont, W. Va., and minerals by Myrtle W. Thorne, R. F. D. No. 7, Baxter, W. Va.

Drilling commenced June 7, 1926; completed Aug. 3, 1926.

Volume, 271,000 cu. ft.

Rock pressure, 580 lbs. in 24 hrs.

16" casing, 16'; 10", 566'; 8 1/2", 1458'; 6 3/4", 1810'; 2" tubing, 2394';

all left in. 10" casing cemented.

Neeter packer, 6 1/2"x2, set at 2208'.

Water, 148-150', 5 bailers per hour. Water, 380-385', 3 bailers per hour.

Water, 475-490', hole full. Water, 1435-1448', hole full.

Gas well. Record to Dept. of Mines stamped Jan. 23, 1952.

Record to RCT from Mrs. Griffith July 9, 1952. O. F. No. 846.

	Top.	Bottom.
Clay, slate	0	45
Coal	45	48
Lime and slate	48	110
Coal	110	114
Slate, lime, and sand	114	150
Slate and lime	150	303
Hard lime	303	317
Slate, lime, and sand	317	390
Mapletown (Sewickley) Coal	390	397
Slate and lime	397	463
Hard lime	463	473
Sand and slate	473	510
Pittsburgh Coal	510	513
Slate, lime, and red rock	513	710
Slate and shells	710	760
Little Burkard Sand	760	770
Slate, shale, and lime	770	895
Slate, shells, and lime	895	970
Slate, shale, and sand	970	1054
Hard sand	1054	1095
Slate	1095	1123
Gas Sand	1123	1164
Shale and slate	1164	1290
First Salt Sand	1290	1300
Second Salt Sand	1300	1480
Lime, shale, and slate	1480	1640
Hard lime	1640	1698
Slate	1698	1753
Little Lime	1753	1765
Pencil Cave	1765	1775
Lime	1775	1785
Big Lime	1785	1862
Big Injun Sand	1862	1985
Lime, slate and shells	1985	2080
Berea Grit	2080	2125
Slate and shells	2125	2362
Gantz Sand (gas, 2362-2368')	2362	2391
Slate and sand	2391	2394
Total depth		2394

2394

Pawpaw District, Marion County, W. Va.
 By Owens-Illinois Glass Co., Gas Dept., Box 4158, Charleston, W. Va.
 Abandoned under permit Mar-.....-A?
 On 15 acres.
 Elevation, 1160' L.
 Coal owned by Consolidation Coal Co., Fairmont, W. Va., and minerals
 by Myrtle M. Thorne, Rt. 7, Baxter, W. Va.
 Drilling commenced June 7, 1926; completed Aug. 3, 1926.
 Volume, 271,000 cu. ft.
 Rock pressure, 580 lbs in 24 hrs.
 16" casing, 16'; 10", 560'; 8 1/2", 1453'; 6 3/4", 1810'; 2" tubing, 2394'.
 Heeter anchor packer, 6 3/8 x 2, set at 2208'.
 10" casing cemented.
 Gas well. Record to Dept. of Mines dated June 6, 1950.
 Record to RCT from Mrs. Griffith June 24, 1951. Old File No. 783.

	Top.	Bottom.
Surface clay	0	29
Dark slate	29	45
Coal	45	48
Lime	48	55
Slate	55	90
White lime	90	110
Coal	110	114
Dark slate	114	120
Lime	120	145
Sand (water, 148-150', 5 blrs. per hour)	145	150
Slate	150	160
Lime	160	301
Slate	301	303
Hard lime	303	317
Slate	317	320
Lime, white, hard	320	375
Sand (water, 380-385', 3 blrs. per hour)	375	390
Mapletown (Sewickley) Coal	390	397
Slate	397	402
Brown lime	402	412
White slate	412	425
Hard lime	425	445
Broken lime	445	463
Hard lime	463	473
Sand (water, 475-490', hole full)	473	493
Black slate	493	510
Pittsburgh Coal	510	513
Slate	513	563
Lime	563	600
Slate	600	640
Red rock	640	680
Slate	680	695
Lime	695	710
Slate and shells	710	760
Little Dunkard Sand	760	770
Slate	770	695
Black shale	795	830
Lime	830	839

(OVER)

T. L. THORNE NO. B-1 (90) WELL (Continued).

	Top.	Bottom.
Slate and shells	839	- 880
Red rock	880	- 885
Lime	885	- 895
Slate and shells	895	- 925
Slate	925	- 950
Black shale	950	- 965
Lime	965	- 970
Black shale	970	- 995
White slate	995	- 1010
Sand	1010	- 1025
Slate and shells	1025	- 1054
Hard sand	1054	- 1095
Slate	1095	- 1123
Gas Sand	1123	- 1164
Slate and shells	1164	- 1188
Hard sand	1188	- 1240
Black slate	1240	- 1290
First Salt Sand	1290	- 1300
Slate	1300	- 1330
Sand	1330	- 1360
Red rock	1360	- 1375
Slate	1375	- 1400
Salt Sand (water, 1435-1448', hole full) (filled up to within 800' of top)	1400	- 1480
Lime	1480	- 1555
Red rock	1555	- 1570
Lime	1570	- 1630
Slate	1630	- 1640
Hard lime	1640	- 1698
Slate	1698	- 1753
Little Lime	1753	- 1765
Pencil Cave	1765	- 1775
Lime	1775	- 1785
Big Lime	1785	- 1862
Big Injun Sand	1862	- 1985
Broken lime	1985	- 2010
Slate and shells	2010	- 2050
Lime	2050	- 2080
Berea Grit	2080	- 2125
Slate and shells	2125	- 2200
Lime	2200	- 2230
Slate and shells	2230	- 2362
Gants Sand (gas, 2362-2363', 370 M. cu. ft.; 3 hrs. later tested 322 M. cu. ft.; gas, 2363-2368', inc. to 350 M. cu. ft.; when tubed, tested 271 M. cu. ft.)	2362	- 2391
Slate	2391	- 2393
Sand	2393	- 2394
Total depth		2394



STATE OF WEST VIRGINIA
DEPARTMENT OF MINES
OIL AND GAS DIVISION

783

AP 663A

WELL RECORD

Permit No. _____ Oil or Gas Well Gas
(KIND)

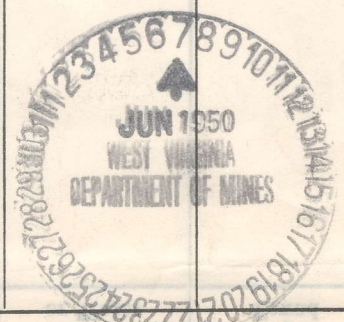
Company OWENS-ILLINOIS GLASS CO., GAS DEPARTMENT
Address P. O. Box 4158, Charleston - 4 - W. Va.
Farm T. L. Thorne Acres 15
Location (waters) _____
Well No. OI No. 90, farm No. B-1 Elev. 1160
District Paw Paw County Marion 1161
The surface of tract is owned in fee by Consolidation Coal
Company Address Fairmont, W. Va.
Mineral rights are owned by Myrtle M. Thorne
Address Rt. 7, Baxter, W. Va.
Drilling commenced 6-7-1926
Drilling completed 8-3-1926
Date Shot From _____ To _____
With _____

Casing and Tubing	Used in Drilling	Left in Well	Packers
Size			
16	16'	16'	Kind of Packer <u>Heater</u>
13			<u>Anchor</u>
10	560'	560'	Size of
8 1/4	1458'	670'	<u>6-5/8" x 2"</u>
6 5/8	1810'	1810'	Depth set
5 3/16			<u>2208</u>
3			Perf. top
2	2394'	2394'	Perf. bottom
Liners Used			Perf. top
			Perf. bottom

Open Flow /10ths Water in _____ Inch
/10ths Merc. in _____ Inch
Volume 271 M Cu. Ft.
Rock Pressure 580 lbs. 24 hrs.
Oil _____ bbls., 1st 24 hrs.
Fresh water _____ feet _____ feet
Salt water _____ feet _____ feet

CASING CEMENTED 10" SIZE _____ No. Ft. _____ Date _____
COAL WAS ENCOUNTERED AT _____ FEET _____ INCHES
_____ FEET _____ INCHES FEET _____ INCHES
_____ FEET _____ INCHES FEET _____ INCHES

Formation	Color	Hard or Soft	Top	Bottom	Oil, Gas or Water	Depth Found	Remarks
Surface clay			0	29			
Dark slate			29	45			
Coal			45	48			
Lime			48	55			
Slate			55	90			
White lime			90	110			
Coal			110	114			
Dark slate			114	120			
Lime			120	145			
Sand			145	150	Water	148-150	5 blrs. per hr.
Slate			150	160			
Lime			160	301			
Slate			301	303			
Hard lime			303	317			
Slate			317	320			
Lime	White	Hard	320	375			
Sand			375	390	Water	380-385	3 blrs. per hr.
Mapletown coal			390	397			
Slate			397	402			
Brown lime			402	412			
White slate			412	425			
Hard lime			425	445			
Broken lime			445	463			
Hard lime			463	473			
Sand			473	493	Water	475-490	Hole full
Black slate			493	510			
Pittsburgh coal			510	513			
Slate			513	563			
Lime			563	600			
Slate			600	640			
Red Rock			640	680			
Slate			680	695			
Lime			695	710			
Slate & Shells			710	760			
Little dunkard sand			760	770			
Slate			770	795			
Black shale			795	830			
Lime			830	839			



(Over) JUN 24 1951

Formation	Color	Hard or Soft	Top	Bottom	Oil, Gas or Water	Depth Found	Remarks
Slate & Shells			839	880			
Red Rock			880	885			
Lime			885	895			
Slate & Shells			895	925			
Slate			925	950			
Black shale			950	965			
Lime			965	970			
Black shale			970	995			
White slate			995	1010			
Sand			1010	1025			
Slate & Shells			1025	1054			
Hard sand			1054	1095			
Slate			1095	1123			
Gas sand			1123	1164			
Slate & Shells			1164	1188			
Hard sand			1188	1240			
Black slate			1240	1290			
First Salt Sand			1290	1300			
Slate			1300	1330			
Sand			1330	1360			
Red Rock			1360	1375			
Slate			1375	1400			
Salt Sand			1400	1480	Water	1435-1448	Hole full
Lime			1480	1555	Filled up to within 800'		of top
Red Rock			1555	1570			
Lime			1570	1630			
Slate			1630	1640			
Hard lime			1640	1698			
Slate			1698	1753			
Little Lime			1753	1765			
Pencil Cave			1765	1775			
Lime			1775	1785			
Big Lime			1785	1862			
Injun Sand			1862	1985			
Broken lime			1985	2010			
Slate & Shells			2010	2050			
Lime			2050	2080			
Berea grit			2080	2125			
Slate & Shells			2125	2200			
Lime			2200	2230			
Slate & Shells			2230	2362			
Gants sand			2362	2391	Gas	2362-2363	370 MCF
Slate			2391	2393	3 hrs. later tested		322 MCF
Sand			2393	2394	Gas	2363-2368	inc. to 350 MCF
Total Depth				2394	When tubed tested		271 MCF

Date June 6, 1950

APPROVED _____, Owner

By A. H. Smith (Title) Geologist