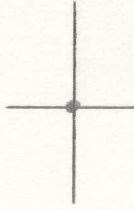


Latitude

39°27'30



$\frac{7}{2}$   
 .315  
 1.71W

80°15'

Longitude

Topo Location

7.5' Loc. \_\_\_\_\_ 15' Loc. \_\_\_\_\_  
 \_\_\_\_\_ (calc.) \_\_\_\_\_

Company Pittsburgh; W Gas

Farm Jas Billingslea 2271

15' Quad \_\_\_\_\_  
(sec.)

7.5' Quad Shinnston

District Lincoln

WELL LOCATION PLAT

County 049 Permit 30672

Latitude

39° 27' 30"

7 1/2



80° 15'

Longitude

**Topo Location**

7.5' Loc. .305 15' Loc. 3.188  
.72w (calc.) .72w

#650 on Co REPT MAP

Company Philadelphia

Farm JAS. Billingslea I

15' Quad Clarkstown NE  
(sec.)

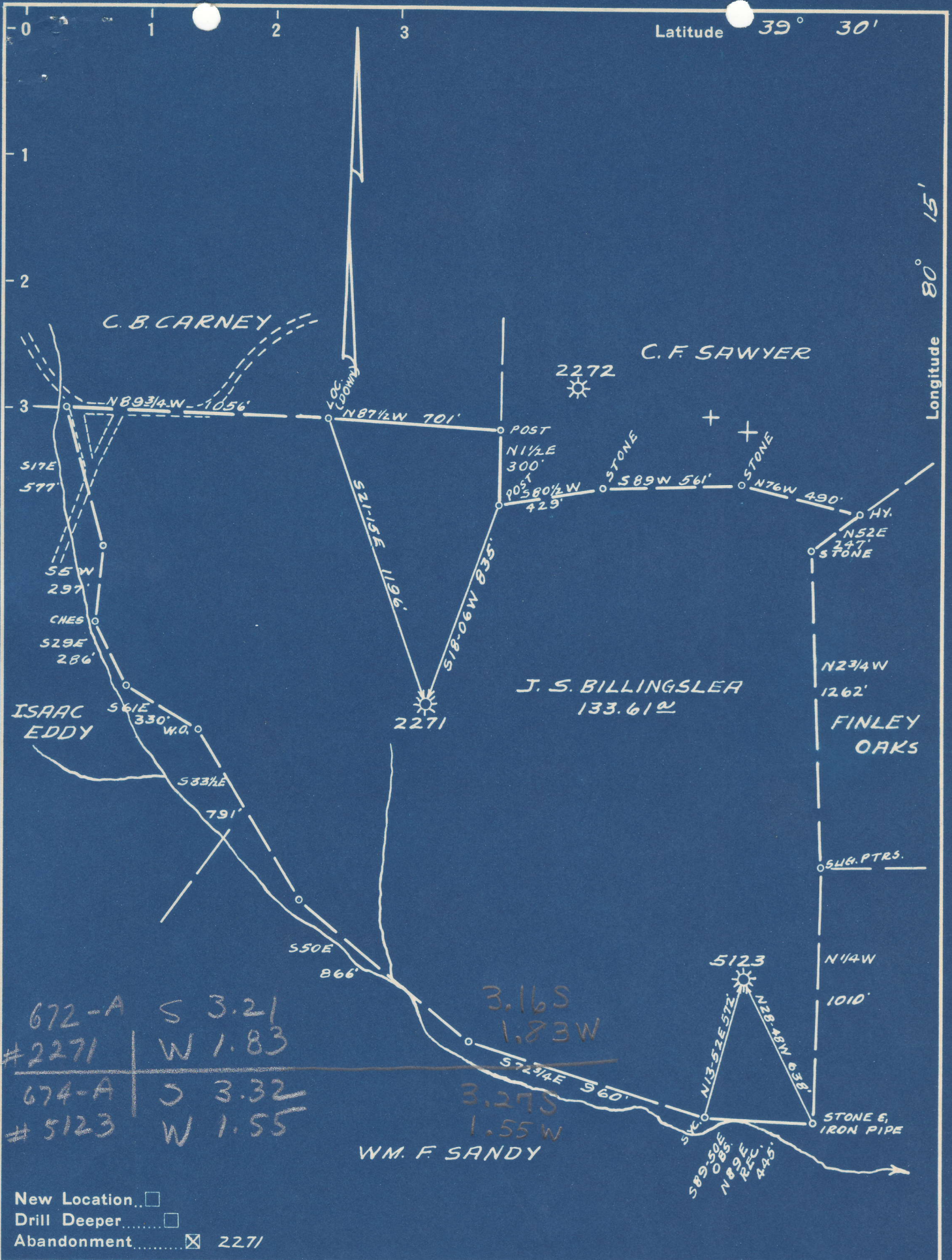
7.5' Quad Shinnston

District Lincoln

**WELL LOCATION PLAT**

County 049 Permit 70372 WAS:

Reassigned:  
049 - 30672



Company PITTSBURGH C. W. VA. GAS CO.  
 Address CLARKSBURG, W. VA.  
 Farm J. S. BILLINGSLEA  
 Tract \_\_\_\_\_ Acres 140 Lease No. 7253  
 Well (Farm) No. 162 Serial No. 2271  
5123  
 Elevation (Spirit Level) NO. 1-1240 VA. NO. 2-1216 VA.  
 Quadrangle CLARKSBURG N.E. 23-4  
 County MARION District LINCOLN  
 Engineer Kenneth B. Moore  
 Approved by J. B. Bryan 964  
 Engineer's Registration No. \_\_\_\_\_  
 File No. VOL. 165 P. 126 Drawing No. \_\_\_\_\_  
 Date JULY 31, 1950 Scale 1" = 500'

STATE OF WEST VIRGINIA  
 DEPARTMENT OF MINES  
 OIL AND GAS DIVISION  
 CHARLESTON

**WELL LOCATION MAP**  
 FILE NO. MAR-672-A-2271  
MAR-674-A-#5123

- + Denotes location of well on United States Topographic Maps, scale 1 to 62,500, latitude and longitude lines being represented by border lines as shown.
- Denotes one inch spaces on border line of original tracing.