

Latitude

Longitude

2.25s
.56w

Topo Location

7.5' Loc. _____ 15' Loc. _____
 _____ (calc.) _____

Company _____

Farm _____

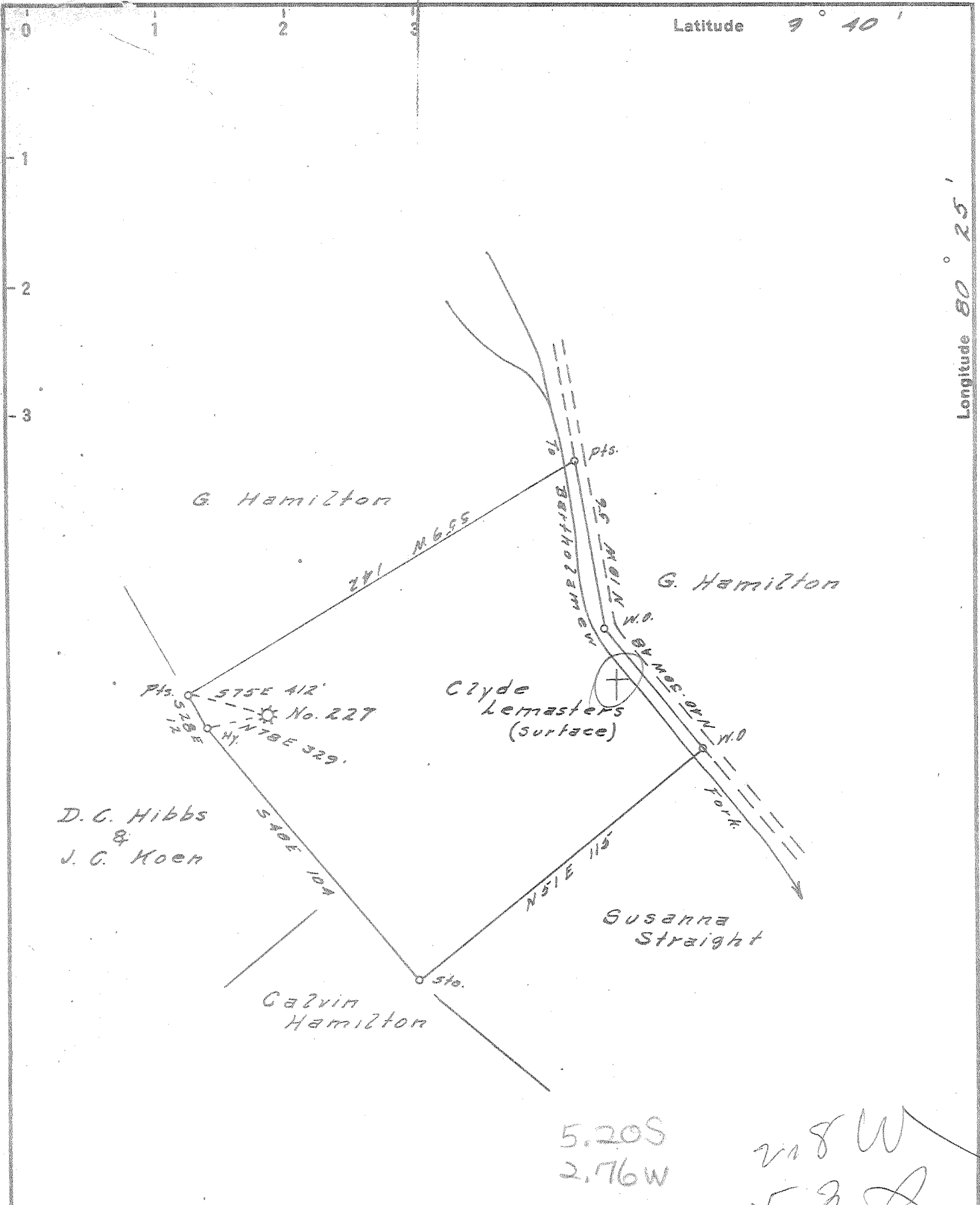
15' Quad _____
(sec.)

7.5' Quad Glass Gap

District Mamington

WELL LOCATION PLAT

County 049 Permit 30870



D. C. Hibbs
&
J. C. Koch

5.20S
2.76W

208W
5.9

DEC 31 1959

New Location
 Drill Deeper
 Abandonment

Company CARNEGIE NATURAL GAS
 Address PITTSBURGH, Pa.
 Farm G. W. HAMILTON
 Tract _____ Acres 84 Lease No. E 3172-41
 Well (Farm) No. 1 Serial No. E 227
 Elevation (Spirit Level) 1390'
 Quadrangle MANNINGTON S.W.
 County MARION District MANNINGTON
 Engineer John O. Bork
 Engineer's Registration No. 1850
 File No. _____ Drawing No. _____
 Date 11-25-59 Scale 1" = 40 Feet

STATE OF WEST VIRGINIA
 DEPARTMENT OF MINES
 OIL AND GAS DIVISION
 CHARLESTON

WELL LOCATION MAP
 FILE NO. MAR-870-A

+ Denotes location of well on United States Topographic Maps, scale 1 to 62,500, latitude and longitude lines being represented by border lines as shown.
 - Denotes one inch spaces on border line of original tracing.

G. W. HAMILTON No. 1 (E-227) - CARNEGIE N.G. Co. - MAR-870-A

Mannington District, Marion County, W. Va.
By Carnegie Natural Gas Co.
2.4 mi. N. W. of Seven Fins.
Completed Feb. 28, 1910.

	Top.	Bottom.	Thickness.
Mapletown (Sewickley) Coal	1065		
Pittsburgh Coal	1160		
Unrecorded (oil show, 2305')		2410	
Big Injun Sand (some gas, 2402 and 2525')	2410	2610	170
Fifty-foot Sand	2965	2988	23
Gordon Stray Sand	3185	3228	43
Gordon Sand	3248	3311	63
Fourth Sand (gas, 3297' and 3337-3349')	3322	3351	29
Total depth		3356	