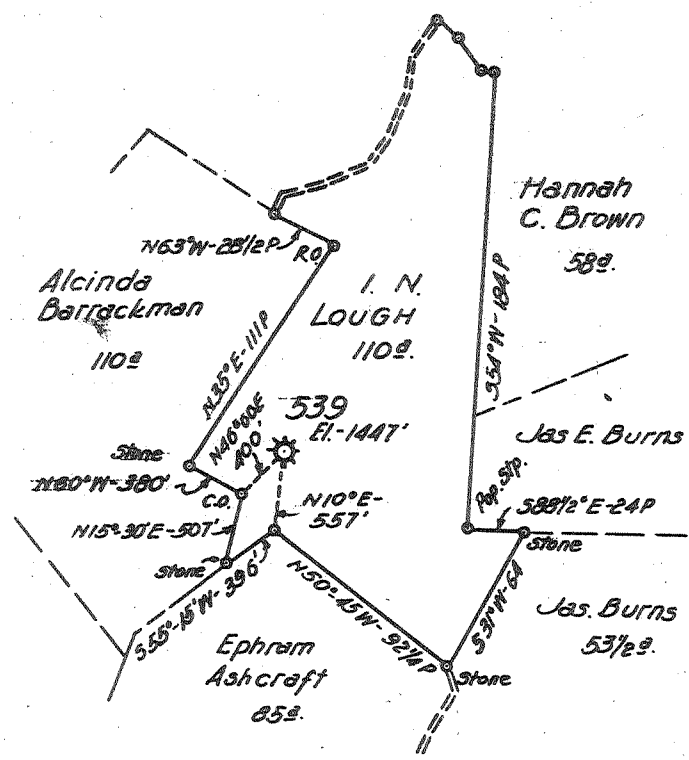


Latitude

6°

1  
2  
3

Longitude 80° 15'



3,205  
1,12W

1,12W  
3,275

JAN 18 1960

New Location   
 Drill Deeper   
 Abandonment  539 FORMERLY H.N.G. CO. WELL NO 539

1-11-60 Now:  
 R.L. Wharton  
 HUNDRED, W. VA.

Company A. M. SNIDER  
 Address HUNDRED, W. VA.  
 Farm I. N. LOUGH  
 Tract \_\_\_\_\_ Acres 110 Lease No. 1870  
 Well (Farm) No. \_\_\_\_\_ Serial No. 539  
 Elevation (Spirit Level) 1447'  
 Quadrangle MANNINGTON  
 County MARION District LINCOLN  
 Engineer HENRY A. HAIN  
 Engineer's Registration No. 3150  
 File No. A.M.S. Drawing No. \_\_\_\_\_  
 Date 11-10-1959 Scale 1" = 80 POLES

STATE OF WEST VIRGINIA  
 DEPARTMENT OF MINES  
 OIL AND GAS DIVISION  
 CHARLESTON

WELL LOCATION MAP  
 FILE NO. MAR-874-A

+ Denotes location of well on United States Topographic Maps, scale 1 to 62,500, latitude and longitude lines being represented by border lines as shown.

- Denotes one inch spaces on border line of original tracing.

I. N. LOUGH No. 539 (Hope) - A. M. SNIDER - MAR-874-A