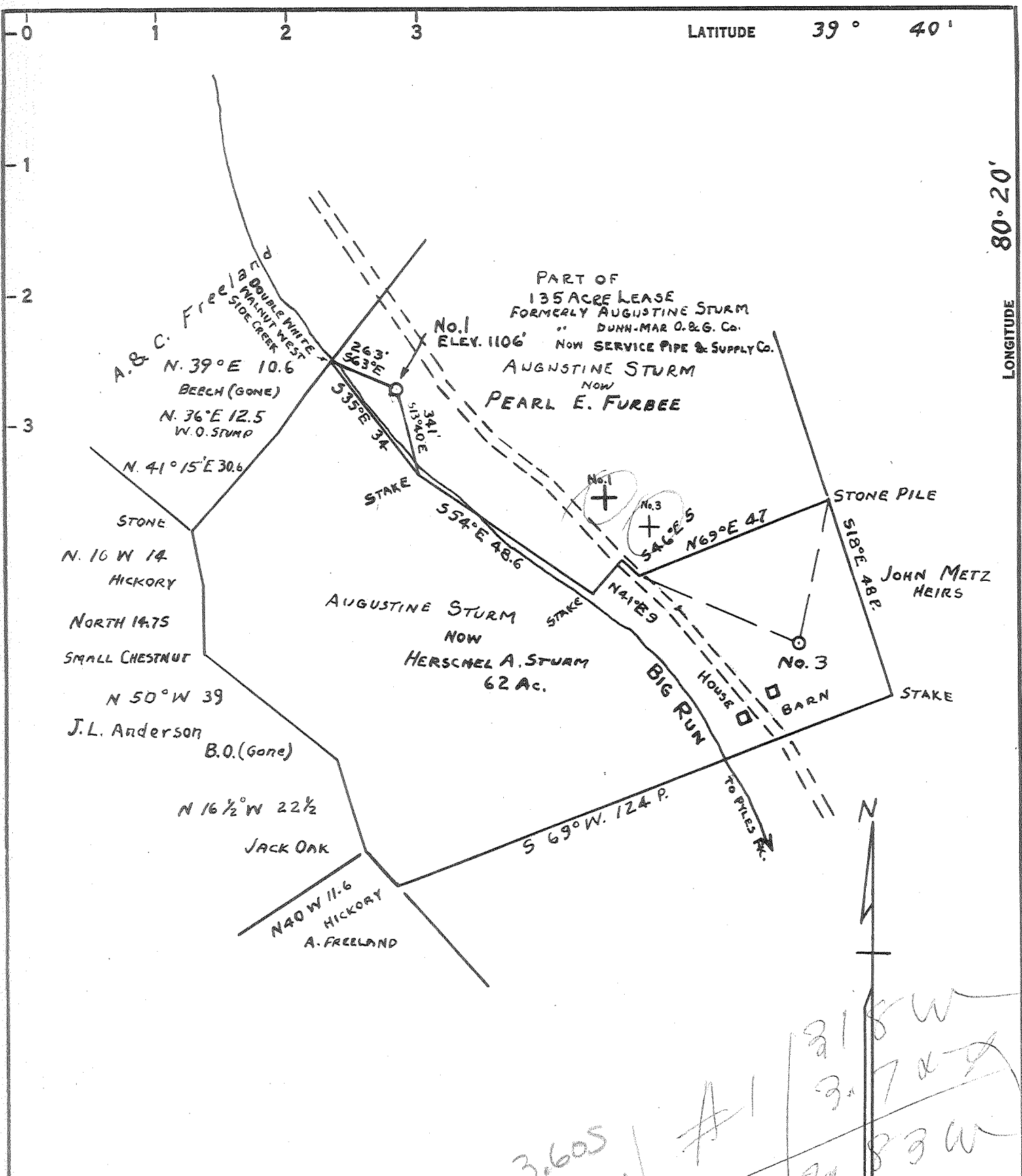


LATITUDE 39° 40'

LONGITUDE 80° 20'



COAL OWNED BY MOUNTAINEER COAL COMPANY

NEW LOCATION...

DRILL DEEPER...

ABANDONMENT...

Handwritten notes and calculations:

3.605

3.12 W

3.905

NOV 14 1960

2.78 W

#1

#3

3.18 W

3.7 W

2.83 W

3.98 W

COMPANY SNYDER WELL SERVICE

ADDRESS HUNDRED, W. VA.

FARM AUGUSTINE STURM

TRACT 1 ACRES 73± LEASE NO. (135A.)

WELL (FARM) NO. 1 SERIAL NO. \_\_\_\_\_

ELEVATION (SPIRIT LEVEL) 1106'

QUADRANGLE MANNINGTON

COUNTY MARION DISTRICT MANNINGTON

ENGINEER Thomas E. Virgin

ENGINEER'S REGISTRATION NO. 1503

FILE NO. B-2-28 DRAWING NO. \_\_\_\_\_

DATE OCT. 29 1960 SCALE 1" = 500'

STATE OF WEST VIRGINIA  
DEPARTMENT OF MINES  
OIL AND GAS DIVISION  
CHARLESTON

**WELL LOCATION MAP**  
FILE NO. MAR-892-A

+ DENOTES LOCATION OF WELL ON UNITED STATES TOPOGRAPHIC MAPS, SCALE 1 TO 62,500. LATITUDE AND LONGITUDE LINES BEING REPRESENTED BY BORDER LINES AS SHOWN.

- DENOTES ONE INCH SPACES ON BORDER LINE OF ORIGINAL TRACING.