

LATITUDE

39° 47' 30"

80° 32' 30"

LONGITUDE

7.5 OGIS topo location

| | | | |
|----------|---------------|---------|---------------|
| 7.5' loc | <u>2.24 S</u> | 15' loc | <u>5.12 S</u> |
| | <u>0.02 W</u> | (calc.) | <u>2.72 W</u> |

Company Manuf. Light + Heat Co.

Farm Marshall County Bank 3394

Quad Cameron 2.5' Cameron SE

County Marshall

District Liberty

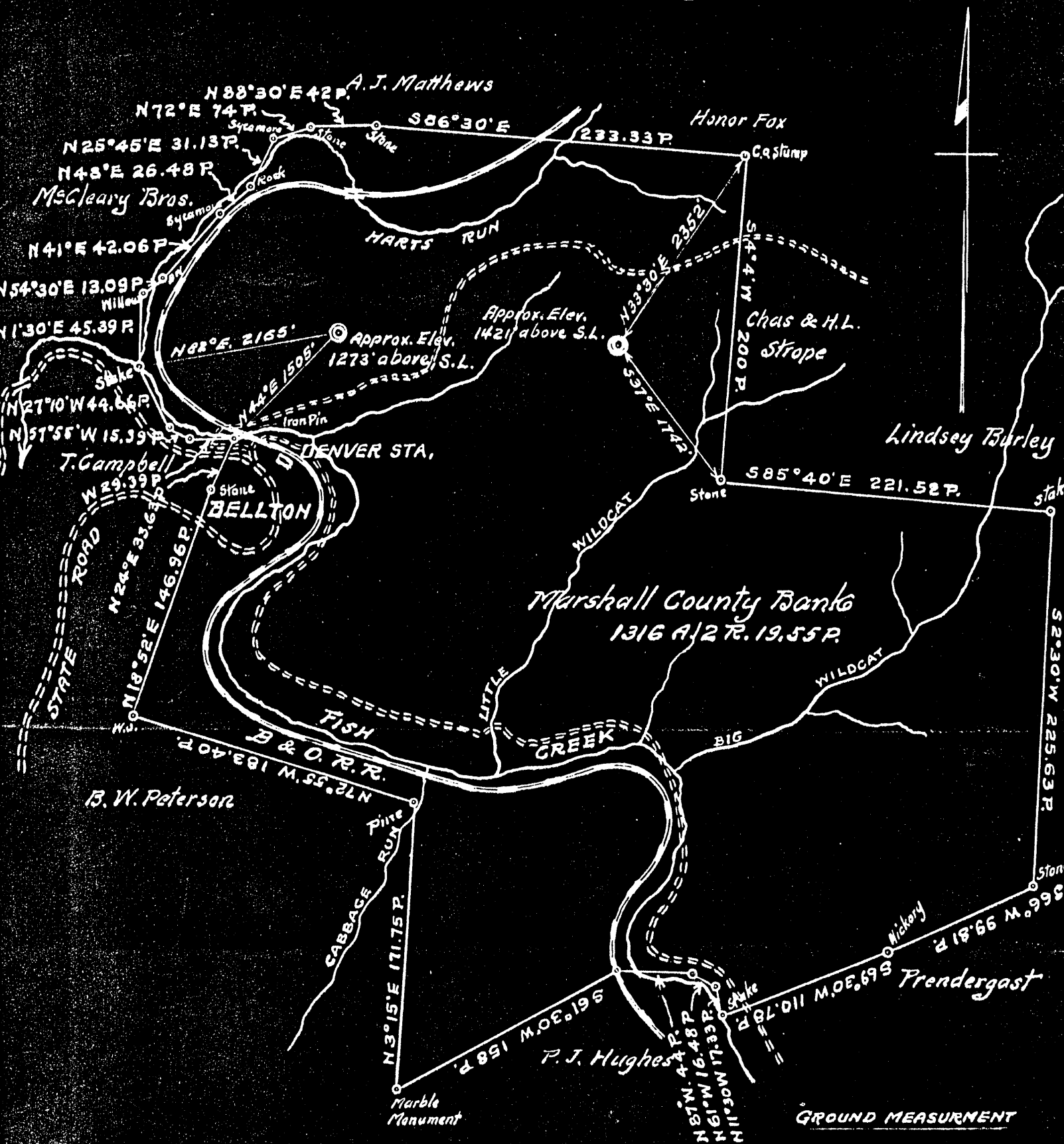
WELL LOCATION MAP

File No. 051 - 4

was 601

Ok per notification from
DEP sel 8/95

Plat of the proposed location of Well No 3394 of the Manufacturers Light & Heat Co. of Pittsburgh, Penn'a. on the Marshall County Bank farm consisting of 1316 Acres located in Liberty District, Marshall County, W. Va.



ENGINEERS CERTIFICATE

I the undersigned hereby certify that this map is correct and shows all the information to the best of my knowledge and belief required by the Oil & Gas Section of the Mining Laws of West Va.

Engineer

Acknowledged before me a Notary Public in and for Allegheny County, Pennsylvania this _____ day of _____ 1929.

mus-4

WEST VIRGINIA DEPARTMENT OF MINES

OIL & GAS SECTION

PRELIMINARY DATA SHEET NO. 1

File No. _____

Well No. 3394

The Manufacturers Light & Heat Company, of 800 Union Trust Building,

Pittsburgh, Penn'a., on the Marshall County Bank Farm

containing 1600 acres. Location _____

Liberty District, in Marshall County, W. Va.

The surface of the above tract is owned in fee by Marshall County Bank of Moundsville, W. Va. address, and the

mineral rights are owned by The Manufacturers Light & Heat Co. of Pittsburgh, Pa.

The oil and gas privileges are held under lease by the above named company, and this well is drilled under permit No. _____ issued by the West Virginia Department of Mines, Oil and Gas Section, dated October 19th, _____ 1929.

Elevation of surface at top of well, 1421' Spirit Barometric.

The number of feet of the different sized casings used in the well.

_____ 16 feet 13" size. Wood conductor.

242 3/2 feet 10 size, csg. 1621 1/2 feet 8 1/4 sized csg.

2347 1/2 feet 6 5/8 size, csg. _____ feet _____ sized csg.

_____ feet _____ size, csg. 3428 3/2 feet 4 sized ^{Casing} csg.

Anchor Packer packer of 6 5/8" x 4" size, set at 3261 ft.

_____ packer of _____ size, set at _____

4 in. ^{Casing} casing perforated at 3242 1/2 feet to 3242 8/12 feet.

4 in. ^{Casing} casing perforated at 3324 1/2 feet to 3324 19/12 feet.

Coal was encountered at 918 feet; thickness 48 inches, and at

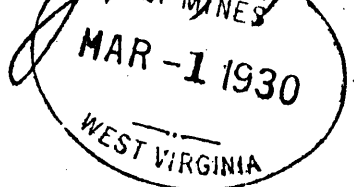
1095- feet; thickness 60 inches; and at 1197 feet;

thickness 96 inches.

Liners were used as follows: (Give details) _____

No Liners used

Feb 18 1930 Date.



Approved THE MANUFACTURERS LIGHT & HEAT CO. Owner.

By Harry H. Fowler LAND AGENT.

File 3394

The Mfrs. Light & Heat Company

COMPLETION DATA SHEET

NO. 2

Pittsburgh, Address

FORMATION RECORD

Penna.

Well # 3394 - Max. Co. Bank, Liberty Dist., Marshall Co., W. Va.

| Name | Color | Character | Oil, Gas or Water | Top | Bottom | Thickness | Total Depth | Remarks |
|------------------|-------|-----------|--------------------------|------|--------|-----------|-------------|---------|
| Sand | White | Hard | water at 90' | 60 | 90 | 30 | | |
| Bluff Sand | " | " | | 780 | 918 | 138 | | |
| Waynesburg Coal | Black | Soft | | 918 | 922 | 4 | | |
| Mapletown | " | " | | 1095 | 1100 | 5 | | |
| Lime | White | Hard | | 1100 | 1197 | 97 | | |
| Pgh. Coal | Black | Soft | Show of gas in Pgh. Coal | 1197 | 1205 | 8 | | |
| Lime | White | Hard | | 1205 | 1240 | 35 | | |
| Murphy Sand | " | " | | 1420 | 1440 | 20 | | |
| Sand | " | " | | 1557 | 1570 | 13 | | |
| Little Dunkard | " | " | | 1620 | 1630 | 10 | | |
| Big " | " | " | | 1695 | 1750 | 55 | | |
| Gas Sand | " | Med. | | 1847 | 1867 | 20 | | |
| First Salt Sand | " | Hard | | 2000 | 2040 | 40 | | |
| Second " | " | " | | 2100 | 2135 | 35 | | |
| Third " | " | " | | 2160 | 2290 | 130 | | |
| Little Lime | " | " | | 2300 | 2310 | 10 | | |
| Pencil Cave | Dark | Soft | | 2310 | 2325 | 15 | | |
| Big Lime | White | Hard | | 2325 | 2377 | 52 | | |
| Big Injun | " | " | Gas at 2466' | 2377 | 2640 | 263 | | |
| Thirty Foot Sand | " | " | | 2975 | 3096 | 121 | | |
| Fifty Foot Sand | " | " | | 3200 | 3218 | 18 | | |
| Gordon Sand | " | " | | 3227 | 3247 | 20 | | |
| Fourth Sand | " | " | Gas at 3265' | 3259 | 3275 | 16 | | |
| Fifth Sand | " | " | " " 3302' | 3296 | 3302 | 6 | | |
| | | | | | | | 3299' | |
| | | | | | | | 3400' | |

Well was not shot at not shot feet; well was shot at _____ feet.

Fresh water at 90' feet; fresh water at _____ feet.

Well was Gas producing hole.
dry

THE MANUFACTURERS LIGHT & HEAT CO.

Harry H. Fowler
LAND AGENT

Feb. 18, 1920
Date

Approved _____

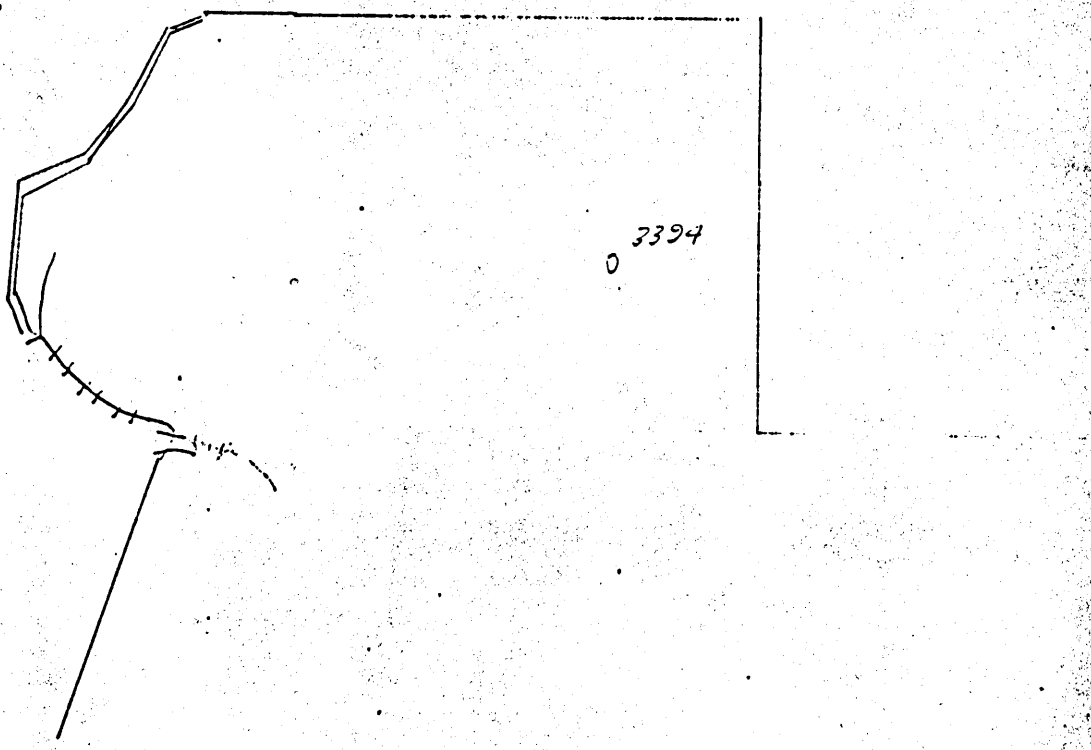
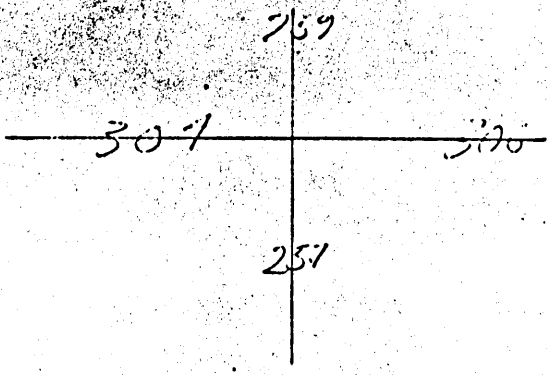
NOTE: All bottom formations must be noted as indicated above and all key-rocks and oil and gas sands must be recorded under their proper geological names in the district as well as any local names commonly used in the district for such strata.

COMPANY COLUMBIA GAS TRANSMISSION CORPORATION MAP NO. Canine

FARM First National Bank of Mountville WELL NO. 60334-1

DISTRICT Liberty COUNTY Marshall STATE WV

SCALE: 1" = 1320' LONG. 80°32'39" LAT. 39°45'37"



MSH-601 *ms*

Division

Company

Record of well No. 3394 on Marshall C. Bank Farm Acres
 Field District County State
 Township
 Rig Commenced 19 , Completed 19
 Drilling Commenced 19 , Completed 19
 Contractor Address
 Driller Name

CASING AND TUBING RECORD

| Conductor | 12" | 10" | 8 1/2" | 7" | 6 1/2" | 5 1/2" | 4" | 3" |
|---------------|-----|-----|--------|----|--------|--------|----|----|
| Used in Drig. | | | | | | | | |
| Left in Well | | | | | | | | |

PACKER RECORD

SHOOTING RECORD

| Size | Depth Set | Type Packer | Date | Type Explosive | Amount | DEPTH | | Volume Before Cu. Ft. | Volume After Cu. Ft. |
|------|-----------|-------------|------|----------------|--------|-------|--------|-----------------------|----------------------|
| | | | | | | Top | Bottom | | |
| | | | | | | | | | |

VOLUME AND PRESSURE

| Date | Reading in inches | Liquid | Size Orifice | Volume | Sand | PRESSURE IN MIN. | | | | | 24 Hour R. P. | Max. R. P. |
|------|-------------------|--------|--------------|--------|------|------------------|---|----|----|----|---------------|------------|
| | | | | | | 1 | 5 | 10 | 30 | 60 | | |
| | | | | | | | | | | | | |

TOTAL INITIAL OPEN FLOW

CUBIC FEET PER 24 HOURS

| FORMATION | TOP | BOTTOM | THICKNESS | REMARKS | | |
|---------------------|------|--------|-----------|---------------------------|------|------|
| Clay yellow soft | 0 | 20 | 20 | R_d Rock red soft | 1505 | 1557 |
| Slate dark soft | 20 | 60 | 40 | Slate dark soft | 1570 | 1605 |
| Slate dark soft | 90 | 170 | 60 | Red Rock red soft | 1605 | 1620 |
| Red Rock soft | 170 | 200 | 30 | Slate dark soft | 1670 | 1670 |
| Sand white hard | 200 | 230 | 30 | Slate white soft | 1680 | 1695 |
| Skate dark soft | 230 | 300 | 70 | Slate dark soft | 1750 | 1755 |
| Lime white hard | 300 | 325 | 25 | Lime shells white hard | 1755 | 1805 |
| Slate light soft | 325 | 365 | 40 | Slate dark soft | 1805 | 1847 |
| Lime white hard | 365 | 380 | 15 | Slate white soft | 1867 | 1882 |
| Red Rock soft | 380 | 390 | 10 | Slate dark soft | 1882 | 2000 |
| Lime white hard | 390 | 425 | 35 | Slate dark soft | 2040 | 2100 |
| Sand soft light | 425 | 445 | 20 | Slate white soft | 2135 | 2160 |
| Slate soft dark | 445 | 545 | 100 | Slate light soft | 2290 | 2300 |
| Lime hard light | 545 | 570 | 25 | Slate white | 2640 | 2650 |
| Slate dark soft | 570 | 640 | 70 | Slate & shells white hard | 2650 | 2975 |
| Lime white hard | 640 | 680 | 40 | Pink rock pink soft | 3096 | 3122 |
| Slate dark soft | 680 | 755 | 75 | Slate light soft | 3122 | 3200 |
| Lime white hard | 755 | 780 | 25 | Slate light soft | 3218 | 3227 |
| Lime white hard | 922 | 970 | 48 | Slate dark | 3247 | 3259 |
| Slate darkksoft | 970 | 1000 | 30 | 4th Sand white hard | 3259 | 3275 |
| Lime soft | 1000 | 1095 | 95 | Slate dark soft | 3275 | 3296 |
| Lime white hard | 1100 | 1197 | 97 | | | |
| Lime white hard | 1205 | 1240 | 35 | | | |
| Red Rock red soft | 1240 | 1265 | 25 | | | |
| Slate light soft | 1265 | 1300 | 35 | | | |
| Pink rock pink soft | 1330 | 1350 | 20 | | | |
| Slate light soft | 1350 | 1420 | 70 | | | |

MSH-601

The Wright & Heat Company

Division *24* 248 Fourth Ave., Pittsburgh, Pa.
 Record of Well No. *3374* on *Marshall, Co. Bank Farm 1600* Acres
Waverly Field *Liberty* District *Marshall* County *W. Va.* State
 Rig Commenced *November 14* 1929. Completed *November 22nd* 1929.
 Drilling Commenced *December 20* 1929. Completed *January 15* 1930.
 Cost per Foot *1.70* Contractor *J. E. Little* Address *W. Va. ...*
 Drillers' Names *For Earnest, R. E. Earnest, Don Moore and James Earnest*

| BOILER | | | ENGINE | | | RIG | | | |
|--------|-----|---------------|--------|-----|---------------|-----|-----|--------|-----------------|
| H. P. | No. | Name of Maker | H. P. | No. | Name of Maker | New | Old | Height | Name of Builder |

| CONDUCTOR AND CASING USED IN DRILLING | | | | | | | | | | |
|---------------------------------------|---------|------------|-------------|-------------|------------|------------|--------|--------|--------|-----------------|
| Conductor | 13 inch | 10 inch | 8 1/2 inch | 6 3/4 inch | 6 1/2 inch | 5 1/2 inch | 5 inch | 4 inch | 3 inch | 1 inch |
| <i>16 ft.</i> | | <i>243</i> | <i>1621</i> | <i>2349</i> | | | | | | <i>3428 3/4</i> |

| CONDUCTOR AND CASING LEFT IN WELL | | | | | | | | | | |
|-----------------------------------|---------|------------|-------------|-------------|------------|------------|--------|--------|--------|-----------------|
| Conductor | 13 inch | 10 inch | 8 1/2 inch | 6 3/4 inch | 6 1/2 inch | 5 1/2 inch | 5 inch | 4 inch | 3 inch | 1 inch |
| <i>16 ft.</i> | | <i>243</i> | <i>1621</i> | <i>2349</i> | | | | | | <i>3428 3/4</i> |

| OIL WELL | | | | | | X GAS WELL | | | | |
|-----------------|-----------------|----------------------|--------|-------|-------|--------------------------|-------------|------------------|---------------------|---------------|
| When Shot | Size of Torpedo | 1st Day's Production | Tubing | Boles | Tanks | Size of Tacker | Depth Set | Packed with | 1st Minute Pressure | Rock Pressure |
| <i>Not Shot</i> | | | | | | <i>6 7/8 x 4 1/2 in.</i> | <i>3261</i> | <i>4" tubing</i> | <i>0</i> | <i>440 #</i> |

| FORMATION | FORMATION | | | REMARKS |
|-------------------------------|-------------|-------------|------------|---|
| | Top | Bottom | Thickness | |
| <i>Sand</i> | <i>60</i> | <i>90</i> | <i>30</i> | <i>white hard</i> |
| <i>Bluff Sand white hard</i> | <i>780</i> | <i>818</i> | <i>138</i> | <i>1 barrel of water per hr. at 90 ft</i> |
| <i>Waynesburg Coal</i> | <i>918</i> | <i>922</i> | <i>4</i> | <i>black soft</i> |
| <i>Mapletown Coal</i> | <i>1095</i> | <i>1100</i> | <i>5</i> | <i>black soft</i> |
| <i>Pgh. Coal black soft</i> | <i>1197</i> | <i>1205</i> | <i>8</i> | <i>showy flag</i> |
| <i>Sand</i> | <i>1300</i> | <i>1330</i> | <i>30</i> | <i>white hard</i> |
| <i>Murphy Sand</i> | <i>1420</i> | <i>1440</i> | <i>20</i> | <i>light</i> |
| <i>Sand</i> | <i>1557</i> | <i>1570</i> | <i>13</i> | <i>white hard</i> |
| <i>Little Dunkard</i> | <i>1620</i> | <i>1630</i> | <i>10</i> | <i>white hard</i> |
| <i>Big Dunkard's</i> | <i>1695</i> | <i>1750</i> | <i>55</i> | <i>white hard</i> |
| <i>Sand</i> | <i>1847</i> | <i>1867</i> | <i>20</i> | <i>white medium</i> |
| <i>First Sand</i> | <i>2000</i> | <i>2040</i> | <i>40</i> | <i>white hard</i> |
| <i>Second</i> | <i>2100</i> | <i>2135</i> | <i>35</i> | <i>white hard</i> |
| <i>Third</i> | <i>2160</i> | <i>2290</i> | <i>130</i> | <i>white hard</i> |
| <i>Little line</i> | <i>2300</i> | <i>2310</i> | <i>10</i> | <i>white hard</i> |
| <i>Pencil Case</i> | <i>2310</i> | <i>2325</i> | <i>15</i> | <i>dark soft</i> |
| <i>Big Line</i> | <i>2325</i> | <i>2377</i> | <i>52</i> | <i>white hard</i> |
| <i>Big Basin Sand</i> | <i>2377</i> | <i>2640</i> | <i>263</i> | <i>Sand 2466' to 2468 S.S.</i> |
| <i>Third foot Sand</i> | <i>2975</i> | <i>3096</i> | <i>161</i> | <i>hard</i> |
| <i>Fifth foot Sand</i> | <i>3200</i> | <i>3218</i> | <i>18</i> | <i>light hard</i> |
| <i>London Sand</i> | <i>3227</i> | <i>3247</i> | <i>20</i> | <i>white hard</i> |
| <i>Fourth Sand white hard</i> | <i>3257</i> | <i>3275</i> | <i>16</i> | <i>Sand 3265' to S.S.</i> |
| <i>Fifth Sand soft</i> | <i>3296</i> | <i>3302</i> | <i>6</i> | <i>" 3299' - Clay</i> |
| <i>Slate</i> | <i>3302</i> | <i>3400</i> | <i>98</i> | |
| <i>Total Depth 3400'</i> | | | | <i>Test No. Water in 2' of ...</i> |

No. 6
 APPROVED

MSH-601