

LATITUDE

89 50

80 3230

0 306 IS
7.5' loc

L
O
N
G
I
T
U
D
E

L
O
N
G
I
T
U
D
E

7.5 OGIS topo location

7.5' loc 0.76S
1.33W

15' loc 0.76S
(calc.) 3.53W

Company _____

Farm _____

LOCATION MAP

Quad Cameron # 15' SE

County _____

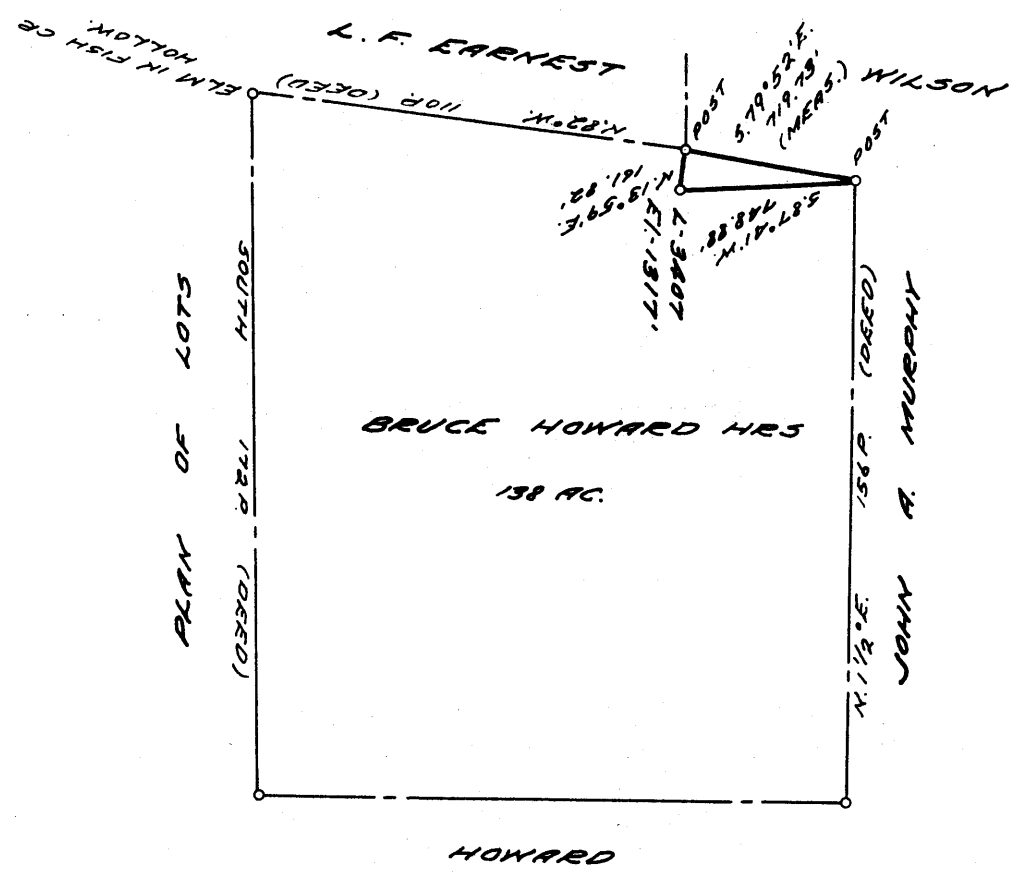
District Cameron

WELL LOCATION MAP

File No. Marshall 14

0 1 2 3 LATITUDE 39 50

1 2 3 LONGITUDE 80 30



0.74S
3.50W

COAL OWNED BY B. HOWARD HRS.

- PART. PLUG
- NEW LOCATION
 - RECONDITION
 - DRILL DEEPER
 - ABANDONMENT

"I, the undersigned, hereby certify that this map is correct to the best of my knowledge and belief and shows all the information required by paragraph 6 of the rules and regulations of the oil and gas section of the mining laws of West Virginia."
Minimum degree of accuracy is one part in 200

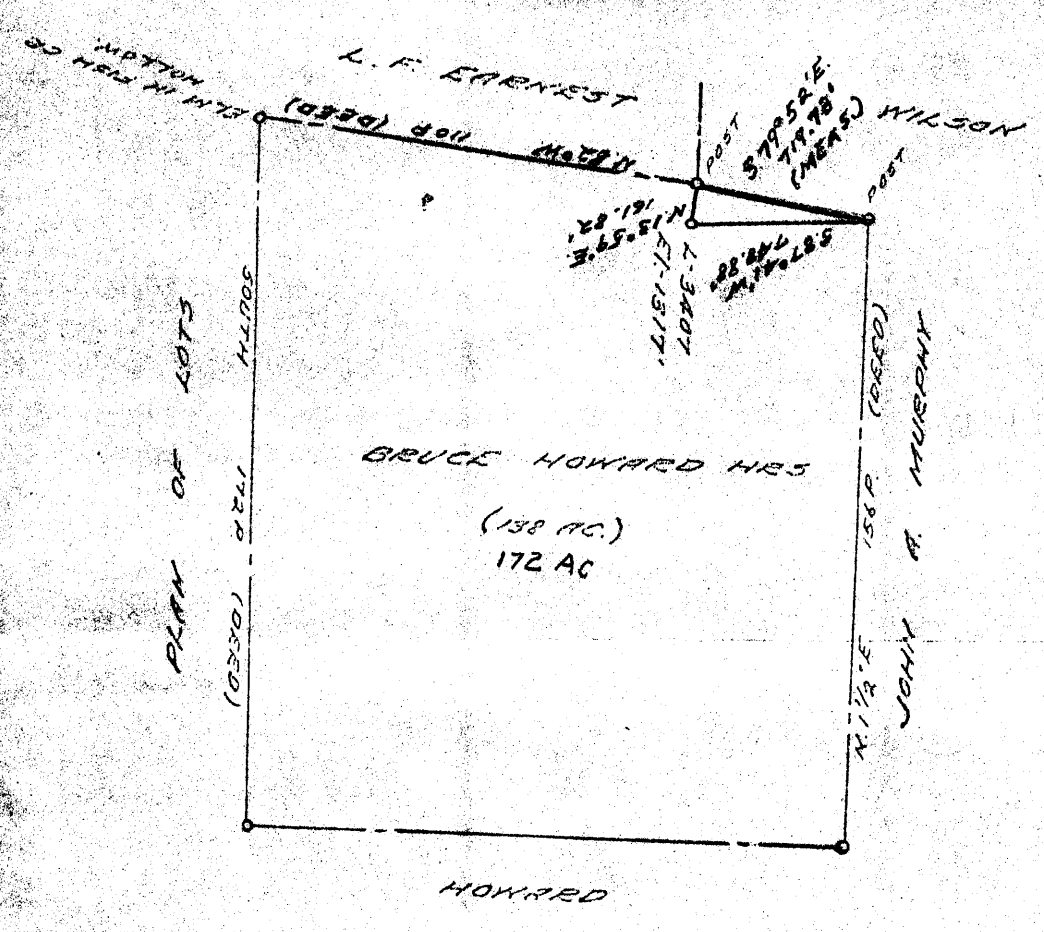
Signed Robert M. Heill J.F.

COMPANY THE MANUFACTURERS LIGHT & HEAT
 ADDRESS 800 UNION TR. BLDG., PGH. PENN.
 FARM BRUCE HOWARD HRS
 MAP 0-25-24 ACRES 172 LEASE NO. 2861
 WELL (FARM) NO. 1 SERIAL NO. 3407
 ELEVATION (SPIRIT LEVEL) 1317'
 QUADRANGLE CAMERON -SE
 COUNTY MARSHALL DISTRICT LIBERTY
 POINT OF PROVEN ELEVATION CAMERON B.M. IN CITY
PARK ACROSS FROM B.O. R.R. STATION
 FILE NO. _____ DRAWING NO. Y-25-967
 DATE 18 JAN. 1965 SCALE 1" = 800'

STATE OF WEST VIRGINIA
 DEPARTMENT OF MINES
 OIL AND GAS DIVISION
 CHARLESTON
 WELL LOCATION MAP
 FILE NO. Mars-476-A

+ DENOTES LOCATION OF WELL ON UNITED STATES TOPOGRAPHIC MAPS. SCALE 1 TO 62,500. LATITUDE AND LONGITUDE LINES BEING REPRESENTED BY BORDER LINES AS SHOWN.
 - DENOTES ONE INCH SPACES ON BORDER LINE OF ORIGINAL TRACING.

+ 0.765
3.51W



OWNED BY BRUCE HOWARD HRS

NEW LOCATION

RECONDITION

DRILL DEEPER

ABANDONMENT - Issued 8-6-68

27 College St. Washington, Penna. 15301

BRUCE HOWARD HRS.

ACRES 172 LEASE NO. 2861

SERIAL NO. 3407

DISTRICT LIBERTY

DRAWING NO. V-25-987

SCALE 1"=800'

18 JAN 1965

"I, the undersigned, hereby certify that this map is correct to the best of my knowledge and belief and shows all the information required by paragraph 6 of the rules and regulations of the oil and gas section of the mining laws of West Virginia."

Minimum degree of accuracy is one part in 200

Signed Robert M. Heil

STATE OF WEST VIRGINIA
DEPARTMENT OF MINES
OIL AND GAS DIVISION
CHARLESTON
WELL LOCATION MAP
FILE NO. MARS-14-P

+ DENOTES LOCATION OF WELL ON UNITED STATES TOPOGRAPHIC MAPS SCALE 1"=52,500' LATITUDE AND LONGITUDE LINES BEING REPRESENTED BY BORDER LINES AS SHOWN.

○ DENOTES ONE OF PLACES ON BORDER LINE OF ORIGINAL TRACING.

AUG 19 1968

BRICE HOWARD NO. 3407 WELL.

Liberty District, Marshall County, W. Va.
 By Manufacturers Light & Heat Co.
 Completed April 7, 1930.
 Record from Mr. Schillham Sept. 30, 1939.

Marskill 14

	Top.	Bottom.
Pittsburgh Coal	956	- 961
Murphy Sand	1256	o 1266
Little Dunkard Sand	1340	- 1356
Big Dunkard Sand	1405	- 1466
Gas Sand	1570	- 1630
1st Salt Sand (gas, 1714-1716')	1705	- 1730
2nd Salt Sand 1760-1795	1760	- 1795
3rd Salt Sand	1915	- 1970
Maxton Sand	2026	- 2060
Big Lime	2060	- 2085
Big Injun Sand	2085	- 2345
30-Foot Sand	2695	- 2724
50-Foot Sand (show gas, 2915 & 2911' / ^{3012'})	2910	- 2940
Stray Sand (Gordon Stray)	2965	- 3004
Gordon Sand	3010	- 3015
4th Sand (gas, 3037')	3035	- 3045
5th Sand	3068	- 3073
Total depth		3100