

LATITUDE 39° 47' 30"

80° 35'

LONGITUDE



7.5 OGIS topo location
 7.5' loc 1.82 S 15' loc ~~4.71 S~~
0.66 W (calc.) 0.66 W

Company Guy B. Patterson

Farm William Davis #8

Quad Cameron 7.5' Cameron SC

County Marshall

District Liberty

WELL LOCATION MAP

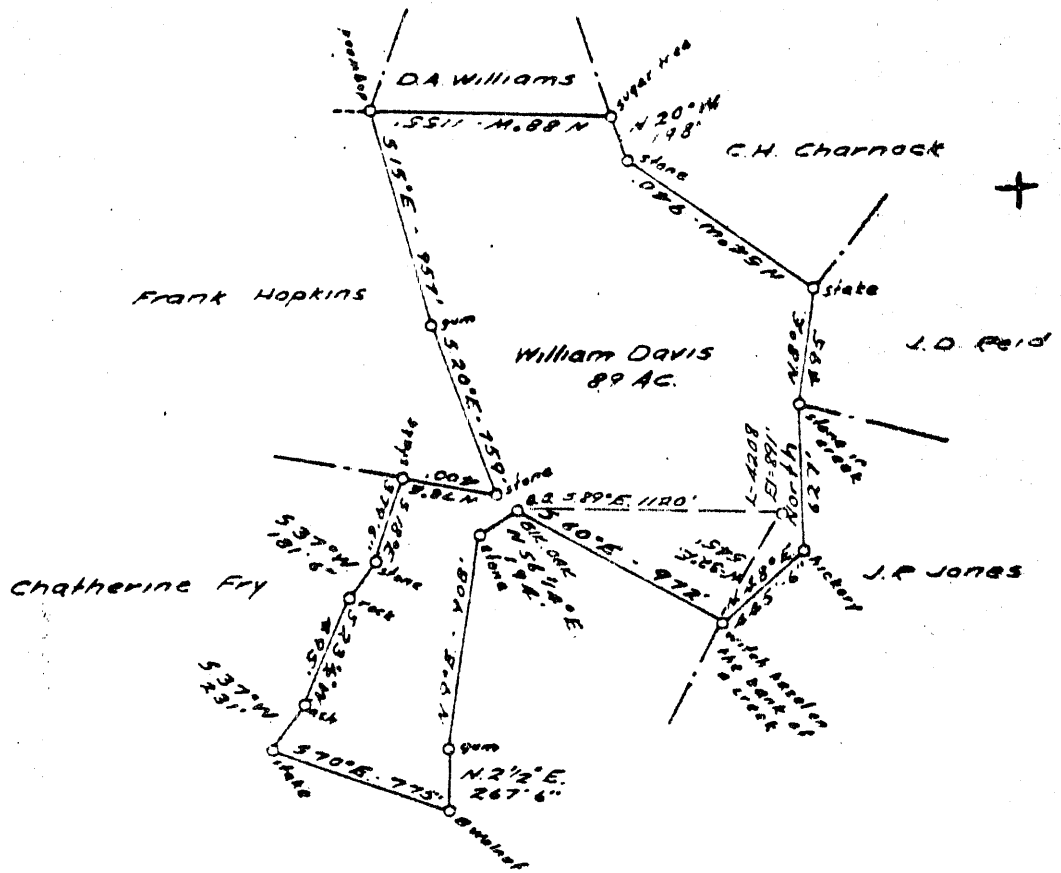
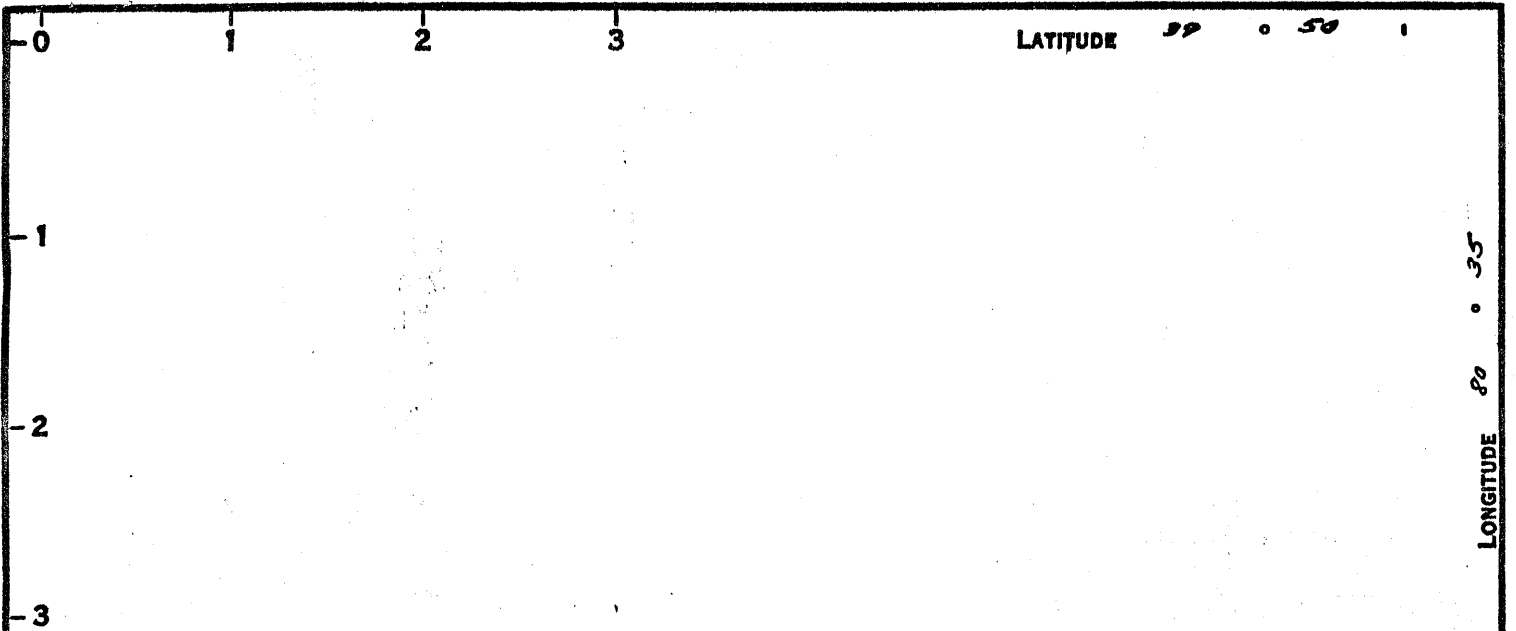
File No. OSI-47

Partial plug?? 1959?

DD 6-6 (025) φ-?
WD 9-0 (025)

(025)

240



COAL OWNED BY _____
 NEW LOCATION RECONDITION & PARTIAL PLUG
 DRILL DEEPER
 ABANDONMENT *issued 2-17-71*

COMPANY THE MANUFACTURERS LIGHT & HEAT
 ADDRESS 800 UNION TRUST BLDG. P64, PA.
 FARM WILLIAM DAVIS
 TRACT _____ ACRES 89 LEASE No. 26956
 WELL (FARM) No. 8 SERIAL No. 1208
 ELEVATION (SPIRIT LEVEL) 891'
 QUADRANGLE CAMERON SC
 COUNTY MARSHALL DISTRICT LIBERTY
 ENGINEER Thomas E. Virgin
 ENGINEER'S REGISTRATION No. 1503
 FILE No. _____ DRAWING No. Y-15-945
 DATE 13 MAY 59 SCALE 1" = 800'

STATE OF WEST VIRGINIA
 DEPARTMENT OF MINES
 OIL AND GAS DIVISION
 CHARLESTON

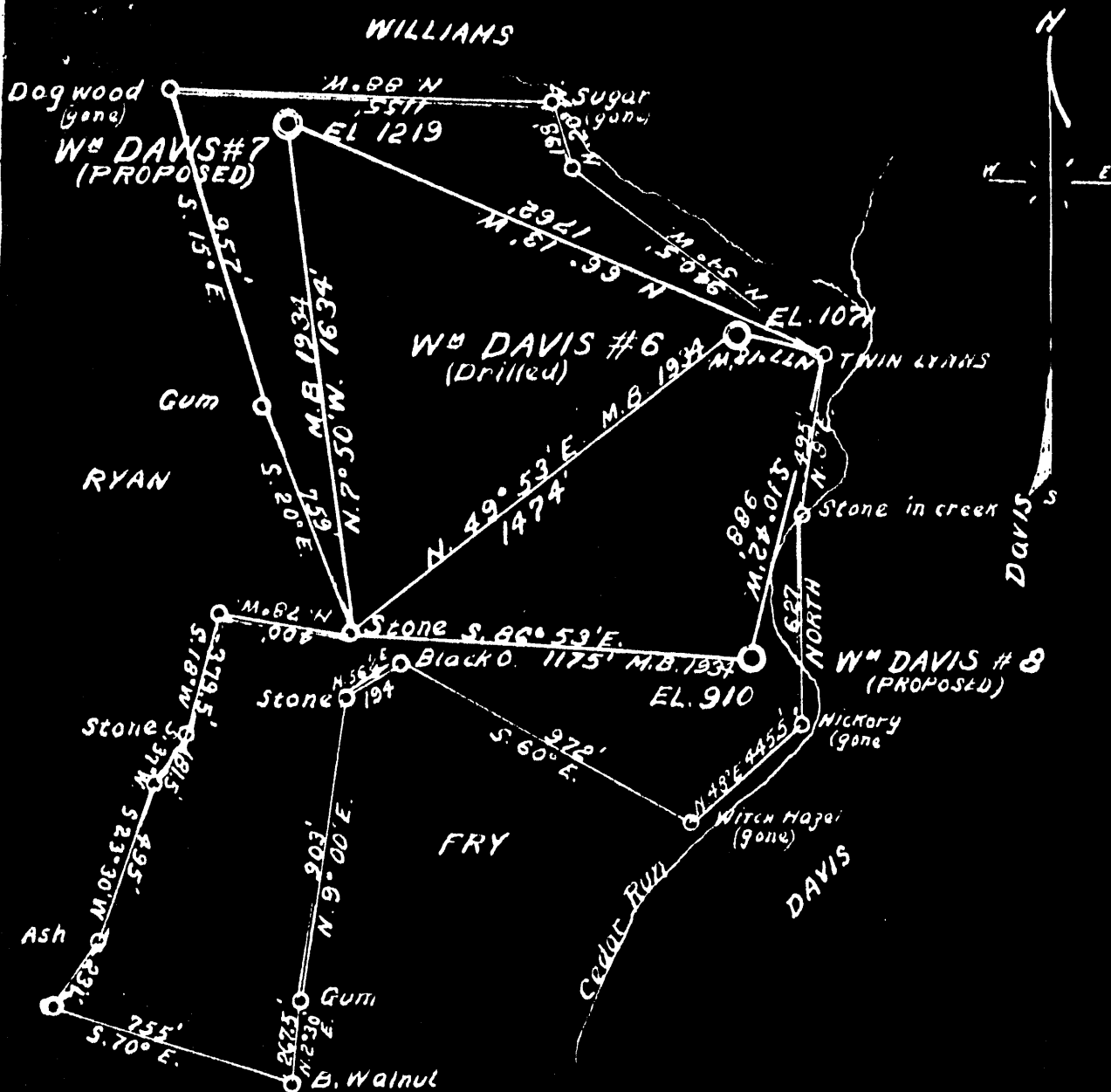
WELL LOCATION MAP

FILE No. MARS-47-Red-PP-P
 PARTIAL PLUG

STORAGE

+ DENOTES LOCATION OF WELL ON UNITED STATES TOPOGRAPHIC MAPS. SCALE 1 TO 62,500. LATITUDE AND LONGITUDE LINES BEING REPRESENTED BY BORDER LINES AS SHOWN.

- DENOTES ONE INCH SPACES ON BORDER LINE OF ORIGINAL TRACING.



Plat of the Proposed Location of Wells No. 7 & 8 of GUY B. PATTERSON of CAMERON, W. Va. on the Wm DAVIS Farm, consisting of 89 Acres Located in LIBERTY District MARSHALL County.

I the undersigned hereby certify that this Map is correct and shows all the information to the best of my knowledge and belief required by the oil and gas section of the Mining Laws of West Virginia.

Gordon W. Jammons
Reg. PROF. ENGINEER

Acknowledged before me a NOTARY PUBLIC in and for Marshall County this the 6th day of JULY 1934.

My Commission Expires

Marshall - 46 + 47



FEB 16 1971

STATE OF WEST VIRGINIA
DEPARTMENT OF MINES
OIL AND GAS WELLS DIVISION

Rotary
Spudder
Cable Tools
Storage

Quadrangle Cameron
Permit No. MARS-46-PP 47

WELL RECORD

Oil or Gas Well Gas
(KIND)

Company The Manufacturers Light and Heat Company
Address 800 Union Trust Bldg., Pgh., Pa. 15222
Farm William Davis Acres 89
Location (waters) _____
Well No. 4208 Elev. 891'
District Liberty County Marshall
The surface of tract is owned in fee by _____
Address _____
Mineral rights are owned by _____
Address _____
Drilling commenced February 16, 1959
Drilling completed April 29, 1959
Date Shot _____ From _____ To _____
With _____
Open Flow /10ths Water in _____ Inch
/10ths Merc. in _____ Inch
Volume None Cu. Ft.
Rock Pressure None lbs. _____ hrs.
Oil _____ bbls., 1st 24 hrs.
WELL ACIDIZED (DETAILS) Not acidized
WELL FRACTURED (DETAILS) Not fractured

Casing and Tubing	Used in Drilling	Left in Well	Packers
Size			Kind of Packer
16			
13			
10 10 3/4"	196'	196'	Size of
8 1/4 8 5/8"	638'	1060'	
6 1/2 7"	1630'	1630'	Depth set
5 3/16			
4 1/2			
3			Perf. top
2			Perf. bottom
Liners Used			Perf. top
			Perf. bottom

Attach copy of cementing record. (See below)
CASING CEMENTED _____ SIZE _____ No. Ft. _____ Date _____
Amount of cement used (bags) _____ See Below
Name of Service Co. Well Service, Inc.
COAL WAS ENCOUNTERED AT 568 FEET _____ INCHES
FEET _____ INCHES FEET _____ INCHES
FEET _____ INCHES FEET _____ INCHES

RESULT AFTER TREATMENT (Initial open Flow or bbls.) _____
ROCK PRESSURE AFTER TREATMENT _____ HOURS _____
Fresh Water _____ Feet _____ Salt Water _____ Feet _____
Producing Sand Lower Maxton Depth 1630 to 1690 T.D.

Formation	Color	Hard or Soft	Top	Bottom	Oil, Gas or Water	Depth	Remarks
<u>Schlumberger Well Survey</u>							
Pittsburgh Coal			568	574			
Big Dunkard Sand			1045	1120			
Lower Maxton Sand			1631	1690			
Plugged back							
Total Depth				1690			
<p>Run 196' of 10 3/4" casing, Sm. Gr.H. 32.75# on a steel shoe. Cemented with 50 bags cement, 14.3 lbs. per gallon, and 19 bags of Aquagel. Good circulation but no cement return at the surface. Run 638' of 8 5/8" casing, Sm. J. 24# and tied on to 422' of original casing with a steel die nipple. Cemented with 250 bags of cement, 15 lbs. per gallon. Good return of cement at the surface. Run 1643' of 7" casing, Sm. J. 20# on a steel shoe set at 1630'. Cemented with 165 bags cement, 14.6 lbs. per gallon, 16 bags of Aquagel, 1 bag of Hydrotan and 10 gallons of K. S. 55. Good return of cement at the surface. Cleaned out to <u>2100'</u> and plugged back to a final depth of 1690'. This was done with 66 bags cement, 15 lbs. per gallon and 12 bags of Aquagel run through 2" tubing.</p>							

WEST VIRGINIA DEPARTMENT OF MINES
OIL & GAS DIVISION
W E L L R E C O R D

Permit No. Mars 47
Quad. *Cameron 7*

Elev.
JFS top est 905'

Gas Well
CASING & TUBING

Company	Guy B. & A. G. Patterson	10	200'	ALL Pulled
Address	Cameron, W. Va.	8 1/2	1068	1068
Farm	Wm. Davis Acres 89	6 5/8	1690	1690
Location	Cedar Run			
Well No.	8 Elev. Sea Level			
District	Liberty Marshall County			No liners used
Surface	Geo. Fish, R.D., Cameron, W. Va.			
Mineral	Belton Fuel Co., Uniontown, Pa.			Casing not cemented
Commenced	Dec. 1935			
Completed	Dec. 1935			Coal at 275'
Not shot				
Open flow	12/10ths W in 2"			
Volume	500,000 C.F.			
Rock Pressure	80 lbs.			
No oil				

✓ Waynesburg Coal	275	277
✓ Mapletown Coal	465	470
✓ Pittsburgh Coal	575	580
✓ Murphy Sand	775	793
✓ Little Dunkard	975	1000
✓ Big Dunkard	1068	1137
✓ Gas Sand <i>2nd Cedar Run</i>	1280	1330
✓ Salt Sand	1449	1494
✓ Maxon Sand <i>Salt</i>	1636	1690
Gas	1650	1662
Total		1690

Now dry and abandoned August 1948

