

Latitude

Longitude

2.25s
1.07w

Topo Location

7.5' Loc. _____ 15' Loc. _____
 _____ (calc.) _____

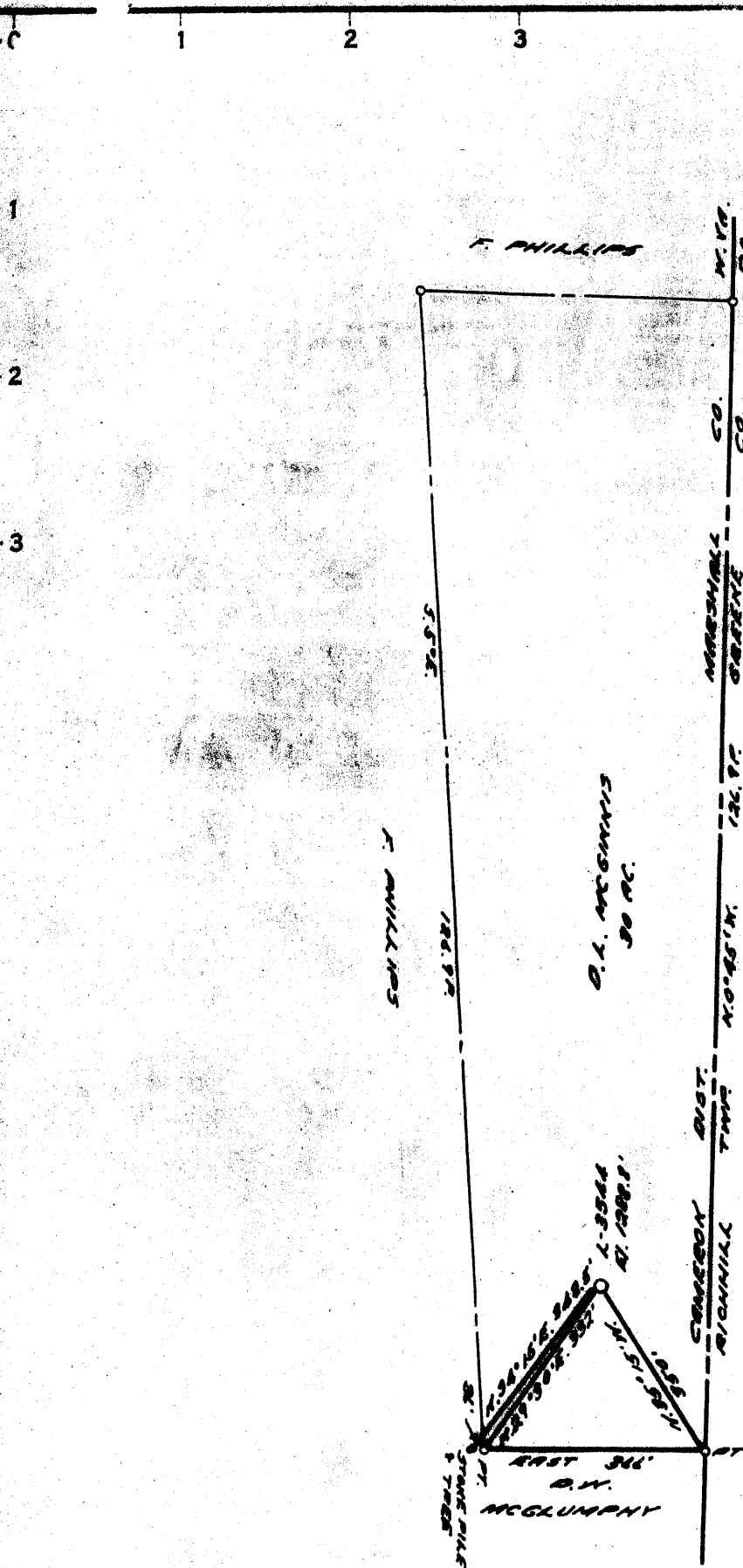
Company Manufact H+HT
Farm DL McGinnis #1
15' Quad _____
 (sec.)
7.5' Quad Mayensillo
District Cameron

WELL LOCATION PLAT

County OSI **Permit** 76

LATITUDE 39 0 55 1

LONGITUDE 80 0 50'



2.22 S
1.05 W
⊕

A. C. WILEY

COAL OWNED BY

- NEW LOCATION
- RECONDITION
- DRILL DEEPER
- ABANDONMENT

"I, the undersigned, hereby certify that this map is correct to the best of my knowledge and belief and shows all the information required by paragraph 6 of the rules and regulations of the oil and gas section of the mining laws of West Virginia."

Minimum degree of accuracy is one part in 300'

Signed Robert M. Heill (DR.)

COMPANY THE MANUFACTURERS LIGHT & HEAT CO.
 ADDRESS 800 UNION TRUST BLDG., PCH. PA.
 FARM D. L. MCGINNIS
 MAP 0185-15 ACRES 30 LEASE NO. 15743
 WELL (FARM) NO. 1 SERIAL NO. 3544
 ELEVATION (SPIRIT LEVEL) 1200.0'
 QUADRANGLE CAMERON EC
 COUNTY MARSHALL DISTRICT CAMERON
 POINT OF PROVEN ELEVATION U.S. G.S. B.M. N. 207 AT 1439
 FILE NO. _____ DRAWING NO. V-28-476
 DATE 22 SEPT 1967 SCALE 1"=300'

STATE OF WEST VIRGINIA
 DEPARTMENT OF MINES
 OIL AND GAS DIVISION
 CHARLESTON
 WELL LOCATION MAP
 FILE NO. MARS-76-P

⊕ DENOTES LOCATION OF WELL ON UNITED STATES TOPOGRAPHIC MAPS, SCALE 1 TO 62,500. LATITUDE AND LONGITUDE LINES BEING REPRESENTED BY BORDER LINES AS SHOWN.
 — DENOTES ONE INCH SPACES ON BORDER LINE OF ORIGINAL TRACING.

OCT 10 1967

6-6 24 22

WEST VIRGINIA DEPARTMENT OF MINES

OIL & GAS DIVISION

W E L L R E C O R D

Permit No. Mars-76

Gas Well

Cameron Quad.

Company Manufacturers Light & Heat
 Address 800 Union Tr. Bldg., Pittsburgh
 Farm D. L. McGinnis Hrs. - Acres 30
 Location
 Well No. 3544 (1) Elev. 1291
 District Cameron, Marshall County
 Surface J. W. McGinnis
 Address RD 2, Wellsburg, W. Va.
 Mineral Mft. Light & Heat Co.
 Address Pittsburgh, Pa.
 Drilling Commenced 4/5/37
 Completed 5/19/37
 Shot Not shot
 Open Flow 26/10ths Merc. in 3"
 Volume 1,330,712 c.f.
 Rock Pres. 530 Lbs. 48 hrs.
 Oil None
 Water Fresh water 125', 465' & 735'

CASING RECORD

Size	Used	Left in W.
Conductor	16'-0"	16'-0"
10"	398'-7"	398'-7"
8-1/4"	1088'-9"	1088'-9"
6-5/8"	1854'-3"	1854'-3"

No Packer

COAL ENCOUNTERED

Feet	Inches
305	36
465	36
642	60
737	72

Formation	Color	Hor	Top	Base	Result	Formation	Color	Hor	Top	Base	Result
Slate & Lime	Dark		0	235		1st Salt Sand	W.	H	1475	1530	
Sand	White		235	295		Slate	Black		1530	1550	
Slate	Black		295	305		Lime	Wh.		1550	1570	
Coal	Black		305	308		Slate	Dark		1570	1575	
Lime	White		308	325		2nd Salt S.	Wh.		1575	1605	
Slate	White		325	340		Slate	Black		1605	1675	
Lime	White		340	410		3rd Salt S.	Wh.		1675	1795	
Sand	White		410	465		Slate	Black		1795	1812	
Coal	Black		465	468		Big Lime	Wh.		1812	1875	
Lime	White		468	500		Big Injun	Yel		1875	1944	
Slate	Black S		500	520		Total Depth				1944	
Lime	White H		520	642							
Coal	Black S		642	647							
Lime	White H		647	695							
Slate	Dark		695	737							
Pitts. Coal	Black S		737	743							
Lime	White H		743	785							
Red Rock	Red S		785	795							
Slate & Lime	Dk. HS		795	815							
Red Rock	Red S		815	830							
Sand	Wh. H		830	860							
Slate			860	875							
Red Rock	Red S		875	900							
Lime Shell	Wh. H		900	910							
Slate	Dk.		910	925							1812
Sand	Wh.		925	940							1291
Red Rock	Red		940	955							521
Slate	Dk.		955	980							
Lime	Wh.		980	990							
Red Rock	Red		990	1010							
Lime	White H		1010	1070							
Slate & Lime	Wh.		1070	1125							
Sand Shell		H	1125	1130							
Pink rock	Pink	S	1130	1135							
Lime		H	1135	1145							
Slate		S	1145	1180							
Sand	Wh.		1180	1195							
Slate		S	1195	1210							
Big Dunkard	Wh.		1210	1265							
Slate		S	1265	1315							
Gas Sand	Wh.		1315	1330							
Slate	Wh.		1330	1340							
Slate	Blk.		1340	1355							
Lime Shell		H	1355	1370							
Slate	Blk.	S	1370	1450							
Sand		H	1450	1460							
Slate	Black		1460	1475							

GAS:
 647' Little gas
 1320' Show
 1766' Show
 Gas in Big Injun Sand

100
 100
 100