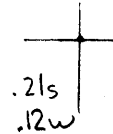


Latitude



Longitude

Topo Location

7.5' Loc. _____ 15' Loc. _____
 _____ (calc.) _____

Company Clara Moore

Farm DH Arruck #3

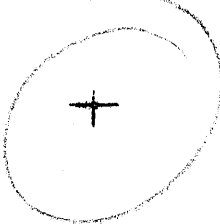
15' Quad _____
(sec.)

7.5' Quad New Martinsville

District Farm Den

WELL LOCATION PLAT

County 051 **Permit** 95

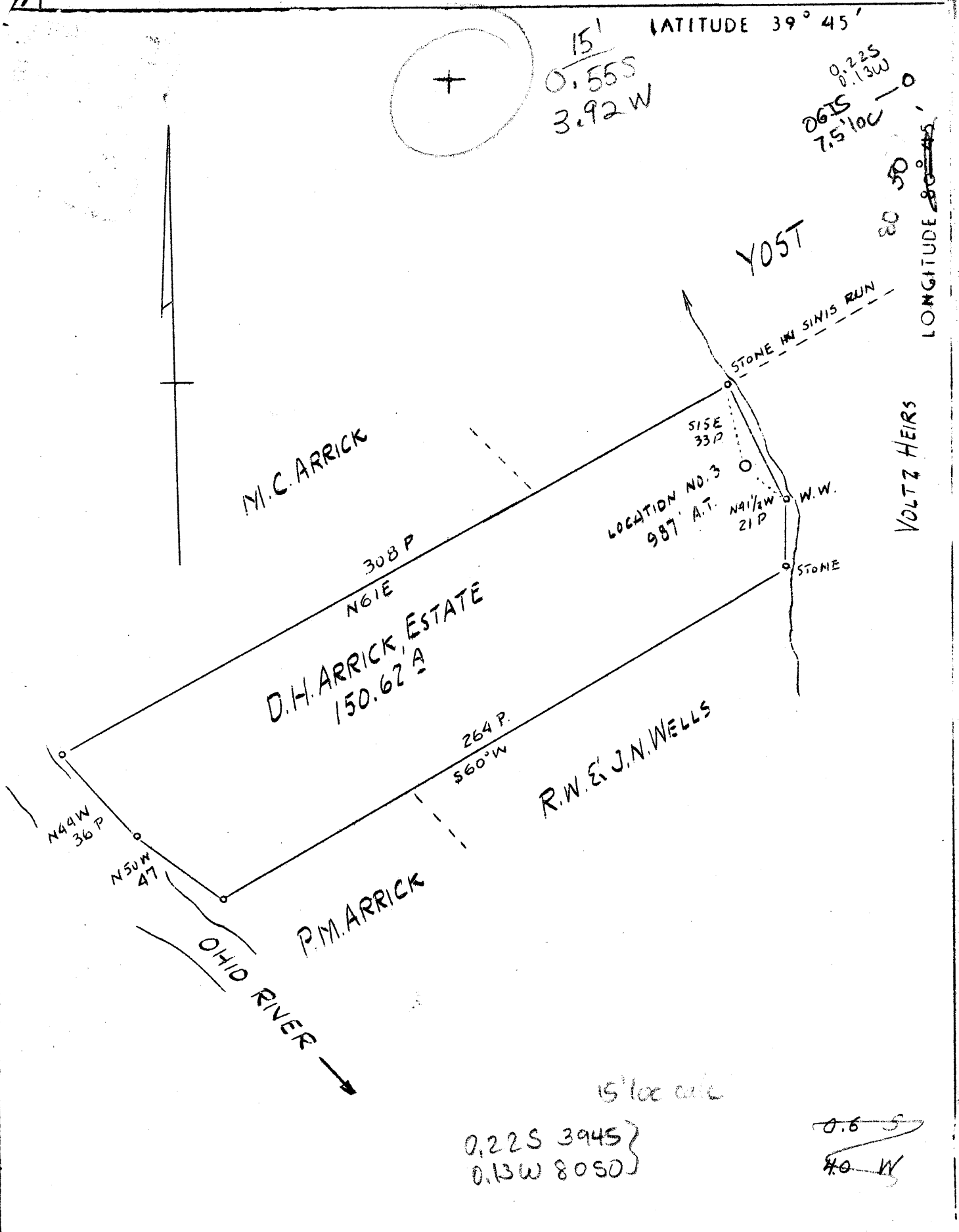


15'
0.55S
3.92W

LATITUDE 39° 45'

0.22S
0.13W
OGIS
7.5' loc

LONGITUDE 80° 45'



15' loc calc

0.22S 3945 }
0.13W 8050 }

~~0.6 S~~
~~40 W~~

NEW LOCATION

Company	Clara V. Moore
Address	New Martinsville, W. Va.
Farm	D. H. Arrick, Estate
Acres	150-62/100
Well (Farm) No.	3
Elevation (SP)	987
Quadrangle	New Martinsville <i>N/E</i>
County	Marshall
District	Franklin
Engineer	F. J. Parsons
Eng. Reg. No.	203
File No.	W
Date	August 1, 1938
Scale	1" = 50 poles

STATE OF WEST VIRGINIA
Department of Mines
Oil & Gas Division
CHARLESTON

WELL LOCATION MAP

File No. MARS-95

x Denotes location of well on U. S. Topographic Maps, scale 1 to 62,500, latitude and longitude lines being represented by border lines as shown.

- Denotes one inch spaces on border line of original tracing.

WEST VIRGINIA DEPARTMENT OF MINES

OIL & GAS DIVISION

WELL RECORD

Permit No. Mars-95

Oil Well

New Martinsville Quad.

CASING & TUBING

Company	Clara V. Moore	10	67
Address	833 3rd St., New Martinsville, W.Va.	8-1/4	691-6
Farm	D. H. Arrick Estate ACRES 150.62	6-5/8	905 905
Location	Sims Run	2	1687
Well No.	3 ELEV. 987		
District	Franklin - Marshall County		Perf. Bottom - 4'
Surface	D. H. Arrick Hqs. Proctor, W. Va.		
Mineral	-		Coal at 500 & 590
Commenced	Aug. 15, 1938		
Completed	Nov. 10, 1939		
Shot	Not shot		
OIL	Three bbls. 1st 24 hrs.		
Fresh Water	30		
Salt Water	1010 and 1693		

Formation Color ^{1/2} 5' Top Base Result Formation Color ^{1/2} 5' Top Base Result

Formation	Color	5'	Top	Base	Result	Formation	Color	5'	Top	Base	Result
✓ Mapletown	Coal	s	500	504							
	Lime	h	504	590							
✓ High Coal		s	590	596							
	Lime		596	603							
	Sand		606	646							
	Red Rock	h	646	676							
	Sand		676	694							
	Lime		694	698		1630					
	Red Rock		698	746		997					
	Sand		746	759		643					
	Slate		759	764							
	Lime		764	781							
	Red Rock		781	796							
	Lime		796	811							
	Red Rock	s	811	829		987					
	Lime		829	840		590					
	Sand		840	860		397					
	Slate		860	870							
	Red Rock	s	870	895							
	Slate		895	905							
	Lime		905	930							
	Slate		930	1000							
	Lime		1000	1010							
	Sand		1010	1035							
	Slate		1035	1095							
	Lime		1095	1145							
	Slate		1145	1155							
	Sand		1155	1165							
	Slate		1165	1175							
	Sand		1175	1200							
	Slate		1200	1290							
	Sand		1290	1325							
	Lime		1325	1340							
	Slate		1340	1375							
	Sand		1375	1520							
	Slate	blk	1520	1545							
	Sand		1545	1570							
	Slate		1570	1590							
✓ Little Lime			1590	1626							
	Slate		1626	1630							
✓ Big Lime	hard		1630	1680							
	Sand		1680	1693							
Pay sand 1691 to 1693											