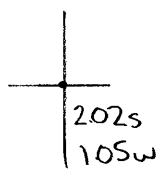


39°45'00"

Latitude

80°47'30"

Longitude



Topo Location

7.5' Loc. _____ 15' Loc. _____
 _____ (calc.) _____

Company Matthew Thos. Haylett

Farm Dougherty Hrs #1

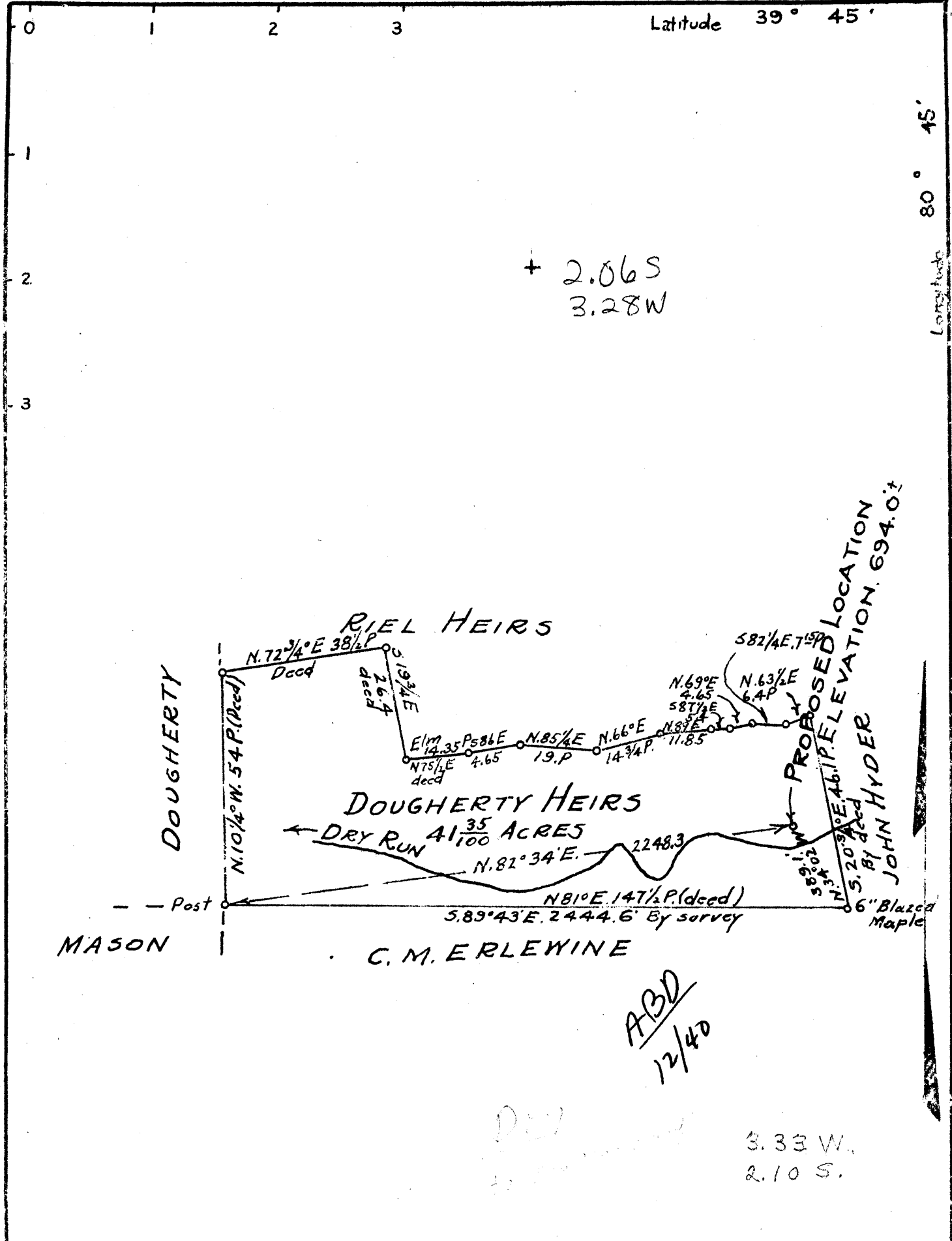
15' Quad _____
(sec.)

7.5' Quad New Mansfield

District Franklin

WELL LOCATION PLAT

County 051 Permit 109



Company MATTHEW & THOMAS HAZLETT

Address 74-Gth ST. M^cMECHEN W. VA

Farm DOUGHERTY HEIRS

Tract _____ Acres 41³⁵/₁₀₀ Lease No. 1

Well (Farm) No ONE Serial No _____

Quadrangle NEW MARTINSVILLE NE

County MARSHALL

District FRANKLIN

Engineer Shalter H. Stegman

Engineer's Registration No. 394

File No. _____ Drawing No. _____

Date JUNE 5, 1940 Scale 1 INCH = 500 FEET.

STATE OF WEST VIRGINIA
DEPARTMENT OF MINES
OIL AND GAS DIVISION
CHARLESTON.

WELL LOCATION MAP
FILE NO. MARS-109

+ Denotes location of well on United States Topographic Maps, scale 1 to 62,500, latitude and longitude lines being represented by border lines as shown.

- Denotes one inch spaces on border line of original tracing.

STATE OF WEST VIRGINIA
DEPARTMENT OF MINES
OIL AND GAS DIVISION

WELL RECORD

Oil or Gas Well (KIND)

Dry

Permit No. *MARS-109*

Company <i>Hoylett Bros</i>	Casing and Tubing	Used in Drilling	Left in Well	Packers
Address <i>74 1/2 E St, McMechen W. Va</i>				
Farm <i>Dougherty Mine</i> Acres <i>41 23/100</i>	Size			
Location (waters) <i>Dry Run</i>				
Well No. <i>1</i> Elev. <i>694 ft</i>	16.			Kind of Packer
District <i>Franklin</i> County <i>Marshall</i>	13.			
The surface of tract is owned in fee by <i>Dougherty Bros</i>	10.	<i>22</i>		Size of
Address <i>Proctor W. Va</i>	8 1/4	<i>85</i>		
Mineral rights are owned by <i>Dougherty Bros</i>	6%	<i>608</i>		Depth set
Address <i>Proctor W. Va</i>	5 3/16			
Drilling commenced <i>July 1, 1940</i>	3.			Perf. top
Drilling completed <i>Sept 16, 1940</i>	2.			Perf. bottom
Date shot <i>✓</i> Depth of shot <i>✓</i>	Liners Used			Perf. top
Open Flow <i>10ths Water in</i> Inch				Perf. bottom
<i>10ths Merc. in</i> Inch				
Volume <i>✓</i> Cu. Ft.	CASING CEMENTED	SIZE	No. Ft.	Date
Rock Pressure <i>✓</i> lbs. hrs.				
Oil <i>✓</i> bbls., 1st 24 hrs.	COAL WAS ENCOUNTERED AT <i>209</i> FEET			INCHES
Fresh water <i>75 ft</i> feet	<i>296</i> FEET			INCHES
Salt water <i>✓</i> feet				INCHES

Formation	Color	Hard or Soft	Top	Bottom	Oil, Gas or Water	Depth Found	Remarks
Clay	Red	Soft	1	6			
Gravel	Gray	Soft	6	22		694	
Lime Shells	White	Hard	22	122		296	
Lime	White	Hard	122	209		398	
Coal M.S.	Black	Soft	209	212			
Lime	White	Hard	212	296			
Coal Pitts	Black	Soft	296	300			
Sand	gray	Hard	300	330			
Shale	White	Hard	330	410			
Red Rock	Red	Soft	410	450			
Lime Shells	White	Hard	450	470			
Red Rock	Red	Soft	470	510			
Shale Shells	White	Hard	510	628			
Run Sand	gray	Soft	628	633			<i>a little gas at 630</i>
Shale	Dark	Soft	633	695			
Red Rock	Red	Soft	695	710			

Total depth
710 ft

Mar. 27, 1940

Hoylett Bros

(By Thomas Hoylett)