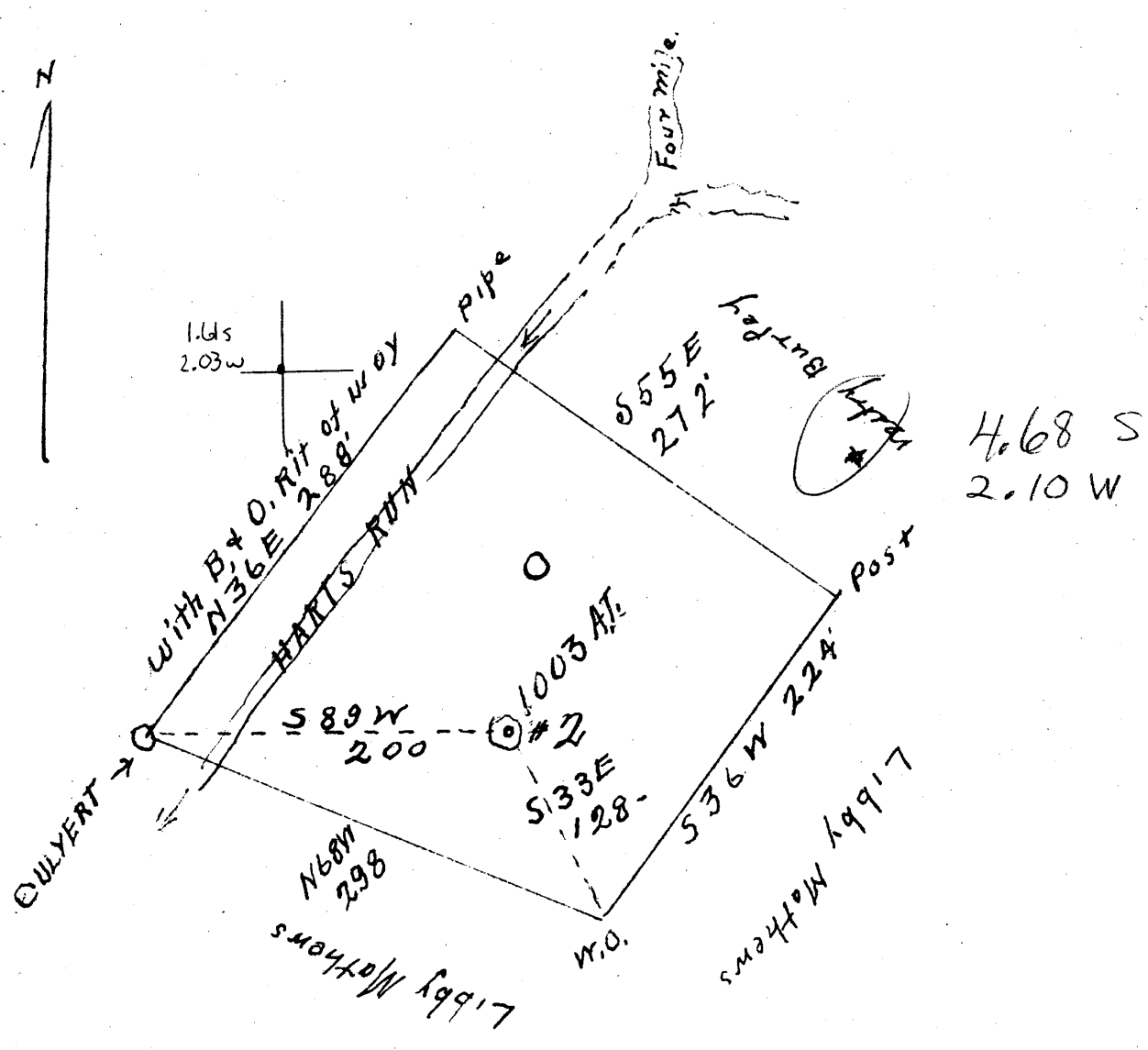


Latitude 39 50

80°30'00"

Longitude 80 30'



W - 2.15
S - 4.75

abd April 15, 41

New Location
 Drill Deeper
 Abandonment

Company GUY A.G. PATTERSON
 Address CAMERON W.VA.
 Farm L.F. BURLEY,
 Tract _____ Acres 1+ Lease No. _____
 Well (Farm) No. 2 Serial No. _____
 Elevation (Spirit Level) 1003' A.T.
 Quadrangle CAMERON
 County Marshall District Liberty
 Engineer J.W. Parsons
 Engineer's Registration No. 203
 File No. O.W. Drawing No. _____
 Date 1-8-1941 Scale 1" = 100'

STATE OF WEST VIRGINIA
 DEPARTMENT OF MINES
 OIL AND GAS DIVISION
 CHARLESTON

WELL LOCATION MAP
 FILE NO. MARS-113

+ Denotes location of well on United States Topographic Maps, scale 1 to 62,500, latitude and longitude lines being represented by border lines as shown.
 - Denotes one inch spaces on border line of original tracing.

6-6 24

WEST VIRGINIA DEPARTMENT OF MINES
OIL & GAS DIVISION
W E L L R E C O R D

Permit No. Mars-113
Cameron Quad.

Gas Well

Company Guy & A. G. Patterson
Address Cameron, W. Va.
Farm L. F. Burley ACRES 1
Location Harts Run
Well No. 2 ELEV. 1003
District Liberly Marshall County
Surface & Mineral L. F. Burley, Woodruff, W. Va.
Commenced March 22, 1941
Completed March 31, 1941
Open Flow 12/10ths W in 1 inch
Volume 28,000 c.f.
Rock Pressure None
Fresh Water 70

CASING & TUBING

8-1/4 20
6-5/8 239

Coal at: 390 to 395
585
590
692
700

Top	bn	s	0	15
Lime	wh	h	15	95
Slate	bk	s	95	125
Lime	bk	h	125	145
Red Rock	rd	s	145	160
Lime	wh	h	160	175
Sand	wh	h	175	225
Slate	bk	s	225	270
Lime	wh	h	270	290
Sand	wh	h	290	355
Lime	wh	s	355	380
Sand	wh	h	380	390
✓ Coal	bk	s	390	395
Sand	wh	s	395	410
Slate	bk	s	410	445
Red Rock	rd	s	445	485
Lime	wh	h	485	535
Slate	bk	s	535	575
Lime	wh	h	575	590
✓ Coal	bk	s	590	595
Lime	wh	s	595	625
Slate	bk	s	625	640
Broken Line	wh	s	640	680
Sandy Shale	bk	h	680	692
✓ Coal	bk	s	692	700
Lime	wh	s	700	710
Total				710