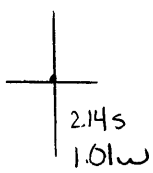


Latitude

Longitude



Topo Location

7.5' Loc. _____ 15' Loc. _____
 _____ (calc.) _____

Company D H Dimson
Farm D H Mason #2
15' Quad _____
 (sec.)
7.5' Quad Powhatan Point
District Franklin

WELL LOCATION PLAT

County 051 **Permit** 153 mapc

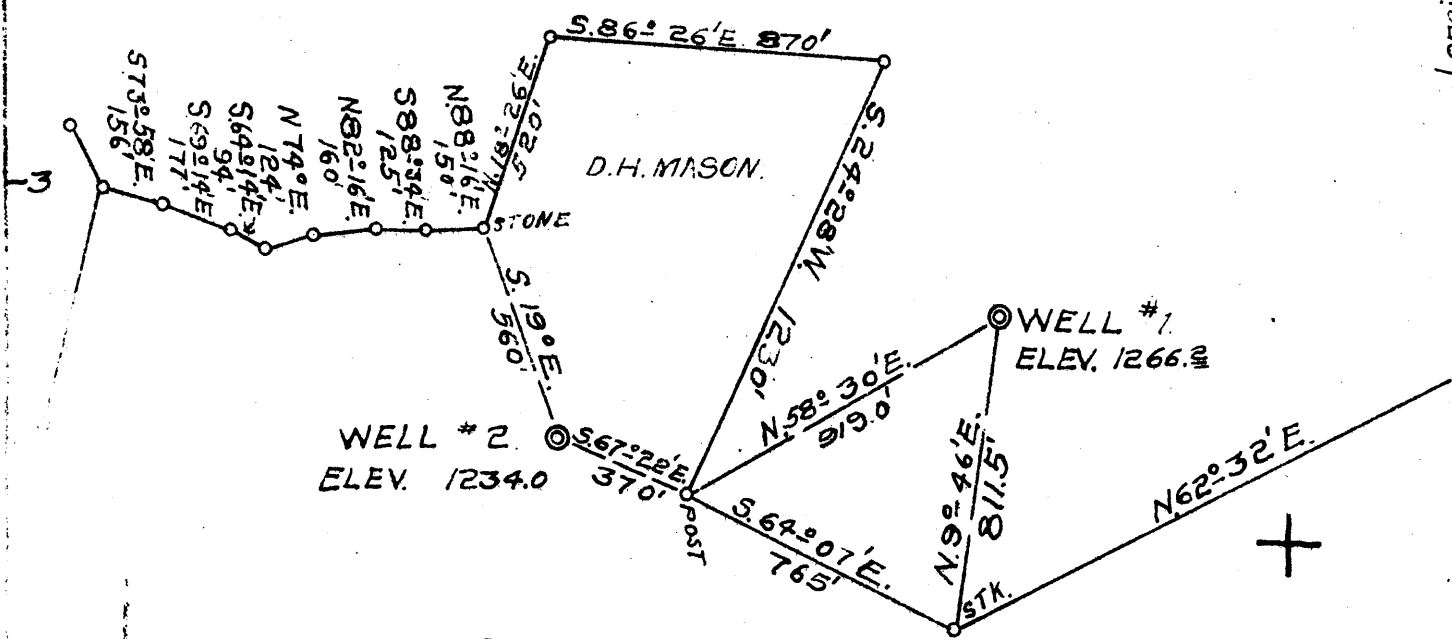
Latitude 39° 55'

Longitude 80° 45'

GUY MEDOWELL.
158 A.

D.H. MASON.

D.H. MASON.
110.5 A.



15'
5.0S
0.9W

New Location...
Drill Deeper...
Abandonment...

Company D. H. DINSMORE, C. E. TEDROW
 Address WAYNESBURG PA.
 Farm D. H. MASON
 Tract Acres 110.5 Lease No. 2
 Well (Farm) No. 2 Serial No. 2
 Elevation (Spirit Level) 1234.0
 Quadrangle CLARINGTON
 County MARSHALL, District Franklin
 Engineer Lewis S. Magers
 Engineer's Registration No. _____
 File No. _____ Drawing No. _____
 Date 3/1/29 Scale 1" = 500'

STATE OF WEST VIRGINIA
DEPARTMENT OF MINES
OIL AND GAS DIVISION
CHARLESTON.

WELL LOCATION MAP
FILE NO. MARS-153-Cancelled

+ Denotes location of well on United States Topographic Maps of 1:62,500, latitude and longitude lines being represented by border lines as shown.
- Denotes one inch spaces on border line of original tracing.