

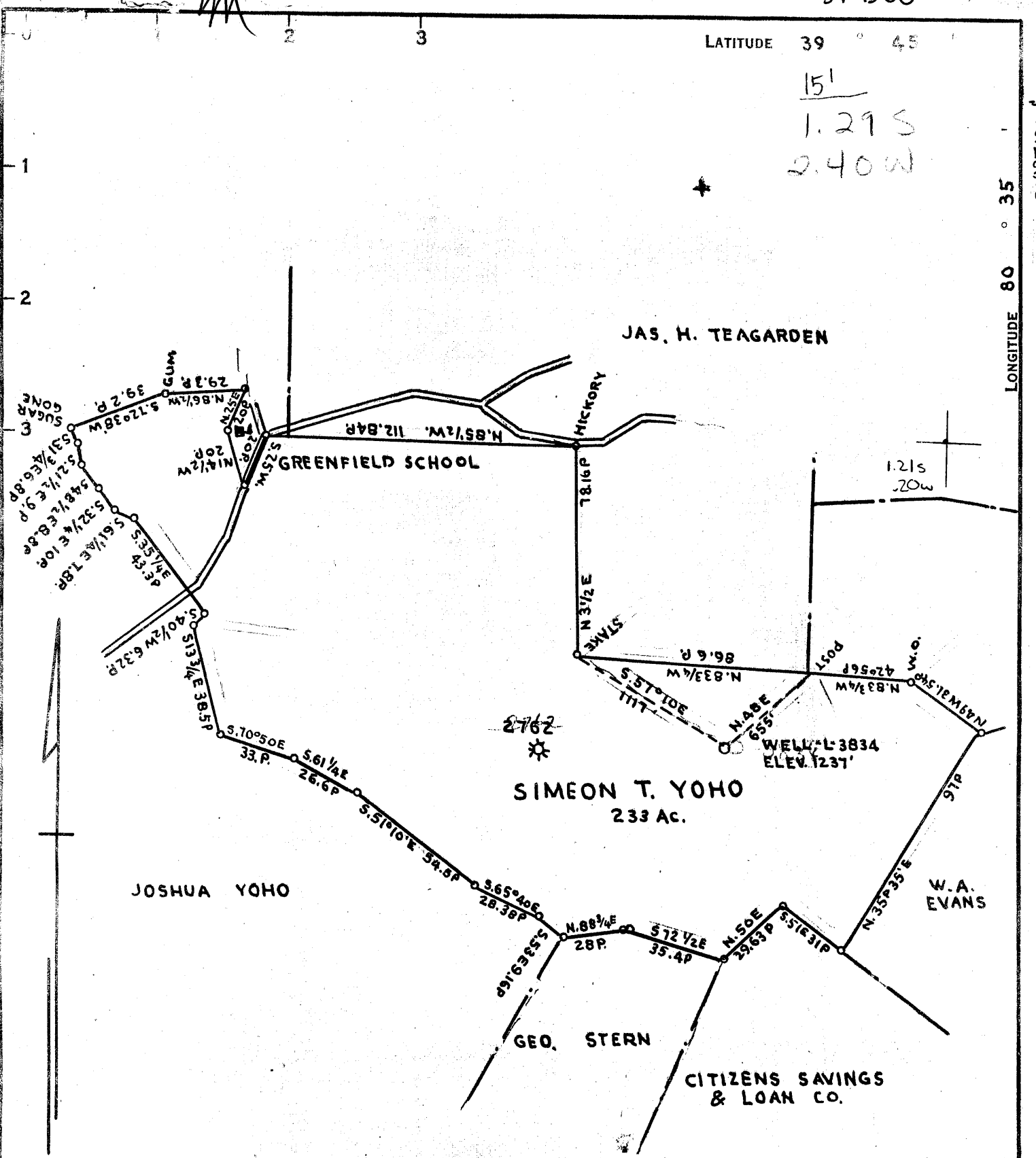
39°45'00"

LATITUDE 39 ° 45

15'
1.29 S
2.40 W

LONGITUDE 80 ° 35

80°37'30"



COAL OWNED BY T.L. ROGERSON MOUNDSVILLE W.VA.

- NEW LOCATION.....
- DRILL DEEPER.....
- ABANDONMENT.....

abd. Sept 47

COMPANY THE MANUFACTURERS LIGHT AND HEAT CO.
 ADDRESS 800 UNION TRUST BLD'G PITTSBURGH PA.
 FARM SIMEON T. YOHO
 TRACT _____ ACRES 233 LEASE No. 4333
 WELL (FARM) No. 2 SERIAL No. 3834
 ELEVATION (SPIRIT LEVEL) 1237'
 QUADRANGLE LITTLETON NC
 COUNTY MARSHALL DISTRICT LIBERTY
 ENGINEER AC Streater
 ENGINEER'S REGISTRATION No. _____
 FILE No. _____ DRAWING No. Y-11-152
 DATE 6-26-1945 SCALE 1"=800'

STATE OF WEST VIRGINIA
 DEPARTMENT OF MINES
 OIL AND GAS DIVISION
 CHARLESTON

WELL LOCATION MAP

FILE No. MARS-156-Redrill
Storage

+ DENOTES LOCATION OF WELL ON UNITED STATES TOPOGRAPHIC MAPS. SCALE 1 TO 62,500, LATITUDE AND LONGITUDE LINES BEING REPRESENTED BY BORDER LINES AS SHOWN.
 - DENOTES ONE INCH SPACES ON BORDER LINE OF ORIGINAL TRACING.



STATE OF WEST VIRGINIA
DEPARTMENT OF MINES
OIL AND GAS DIVISION

Littleton

WELL RECORD

Permit No. MARS-156-R

Oil or Gas Well Gas
(KIND)

Company THE MANUFACTURERS LIGHT AND HEAT COMPANY

Address 800 Union Trust Bldg., Pgh., Penna.

Farm S. T. Yoho Acres 233

Location (waters) _____

Well No. 3834 Elev. 1237'

District Liberty County Marshall

The surface of tract is owned in fee by _____

Address _____

Mineral rights are owned by _____

Address _____

Drilling commenced 7-8-54

Drilling completed 8-20-54

Date Shot From _____ To _____

With _____

Open Flow 80 /10ths Water in 1 Inch

_____ /10ths Merc. in _____ Inch

Volume 70.104 Cu. Ft.

Rock Pressure 70 lbs. 72 hrs.

Oil _____ bbls., 1st 24 hrs.

Fresh water _____ feet _____ feet

Salt water _____ feet _____ feet

Casing and Tubing	Used in Drilling	Left in Well	Packers
Size			
16			Kind of Packer _____
13			
10		303	Size of _____
8 1/4		1481	
7		2076	Depth set _____
5 3/16			
3			Perf. top _____
2			Perf. bottom _____
Liners Used			Perf. top _____
			Perf. bottom _____

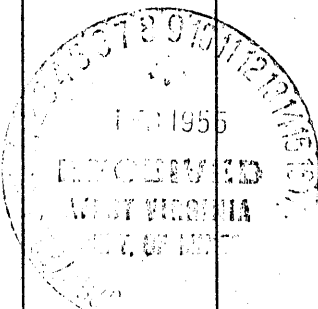
CASING CEMENTED _____ SIZE _____ No. Ft. _____ Date _____

COAL WAS ENCOUNTERED AT 838 FEET _____ INCHES

945 FEET _____ INCHES FEET _____ INCHES

FEET _____ INCHES FEET _____ INCHES

Formation	Color	Hard or Soft	Top	Bottom	Oil, Gas or Water	Depth Found	Remarks
Big Injun Sand			2109	2344	Gas 2136 to 2145		
TOTAL DEPTH			2326		Gas 2192 to 2195		
7" casing set at			2052		1. 10 3/4" Steel Die Nipple used to connect 209' of 10 3/4" casing to casing that was left in hold making a total of 303' of 10 3/4" 1. 8 5/8" steel nipple Die nipple used to connect casing to casing that was left in hold 457' making a total of 1481' of 8 5/8" casing in hole 4 bags aquajel; 50 sacks of cement run around 10" casing; 200 sacks run around 8 5/8" casing; 270 sacks run around 7" casing.		
Mapletown Coal			838	842			
Pittsburgh Coal			945	950			
NOTE:	Coal record copies from original record.				Hold was filled with stone from 2344 to the depth of 2330.		
					Lead plug set at 2330' 1.		Sacks of cement run on top of plug.



WEST VIRGINIA DEPARTMENT OF MINES
OIL & GAS DIVISION
W E L L R E C O R D

Permit No. Mars 156 D
Littleton Quad.

Gas Well
CASING & TUBING

Company	The Manf. Light & Heat Co.
Address	800 Union Trust Bldg., Pittsburgh, Pa.
Farm	Simeon T. Yoho Acres 233
Location	
Well No.	2-3834 Elev. 1237
District	Liberty Marshall County
Surface	Clarence Yoho, Howard, W.Va.
Mineral	The Manf. Light & Heat Co. Pittsburgh, Pa.
Commenced	7-16-45
Completed	8-10-45
Open flow	36/10ths W in 1"
Volume	47,025 C.F.

Coal at 945' 60"

DRILLED DEEPER

Started drilling deeper at 2145'

✓ Big Injun	2110	2344	
Slate & Shells	2344	2400	Gas 2136-2145 and 2192-2195
Slate & Shells	2400	2490	
Sandy Lime	2490	2595	
White Slate	2595	2700	
Lime Shells	2700	2780	
Pink Rock	2780	2835	
Slate	2835	2881	
✓ 50' Sand	2881	2891	
Slate	2891	2941	
✓ Gordon Sand	2941	2953	
Lime & Shale	2953	2980	Reduced hole at 2941'
✓ 4th Sand	2980	2987	
Slate, Lime & Shells	2987	3204	
TOTAL DEPTH		3204	

3204
2145

1059

WEST VIRGINIA DEPARTMENT OF MINES
OIL & GAS DIVISION
W E L L R E C O R D

Permit No. Mars 156		Gas Well
Littleton Quad.		CASING & TUBING
Company	The Manufacturers Light & Heat Co.	
Address	800 Union Trust Bldg., Pittsburgh, Pa.	
Farm	S.T. Yoho Acres 233	
Location		10 300' 300'
Well No.	2- 3834 Elev. 1237'	8½ 1482'7 Same
District	Liberty Marshall County	6 5/8 2073'10 Same
Surface	Clarence Yoho, Howard, W.Va.	4 2156'4 Same
Mineral	The Mfrs. Light & Heat Co. 800 Union Trust Bldg., Pittsburgh, Pa.	
Commenced	6-22-44	Anchor Packer
Completed	11-5-44	Size 6 5/8 x 4"
Not shot		Depth 2121'
Open flow	70/10ths W in 2 1/2"	
Volume	409.911 C.F.	Coal at 838' 48"
Rock Pressure	187 lbs. 48 hrs.	945' 60 "
Fresh Water	1845' H.F.	

Clay	0	20	Pencil Cave	2043	2050
Sand	20	30	Big Lime	2050	2110
Slate & Lime	30	50	Big Injun Sand	2110	2145
Slate	50	140	TOTAL DEPTH		2145
Lime	140	155			
Red Rock	155	165	Gas 2136 to 2145		
Slate & Lime	165	340			
Sand	340	355			
Slate & Lime	355	412			
Sand	412	430			
Slate	430	455			
Red Rock	455	468			
Slate	468	480			
Red Rock	480	490			
Slate	490	500			
Sand	500	510			
Slate & Lime	510	610	Show of coal 572		
Sand	610	638	" 638		
Slate & Lime	638	750			
Red Rock	750	758			
Slate & Lime	758	838			
Mapletown Coal	838	842			
Slate & Lime	842	890			
Slate	890	945			
Pittsburgh Coal	945	950			
Slate & Lime	950	994			
Red Rock	994	1008			
Slate	1008	1020			
Sand	1020	1032			
Slate & Lime	1032	1068			
Pink Rock	1068	1185			
Slate & Lime	1185	1220			
Red Rock	1220	1242			
Slate	1242	1252			
Red Rock	1252	1265			
Lime & Slate	1265	1286			
Little Dunkard	1286	1321			
Slate	1321	1335			
Red Rock	1335	1365			
Big Dunkard	1365	1400			
Shale	1400	1425			
Red Rock	1425	1448			
Slate & Lime	1448	1593			
Sand	1593	1612			
Slate & Lime	1612	1681			
1st Salt Sand	1681	1701			
Slate & Lime	1701	1822			
2nd Salt Sand	1822	1874			
Slate & Shells	1874	1910			
3rd Salt Sand	1910	1925			
Slate, Lime, & Shale	1925	2043			

2050
1237

813

2050
110

2160
1337

823