

Latitude 39°45'

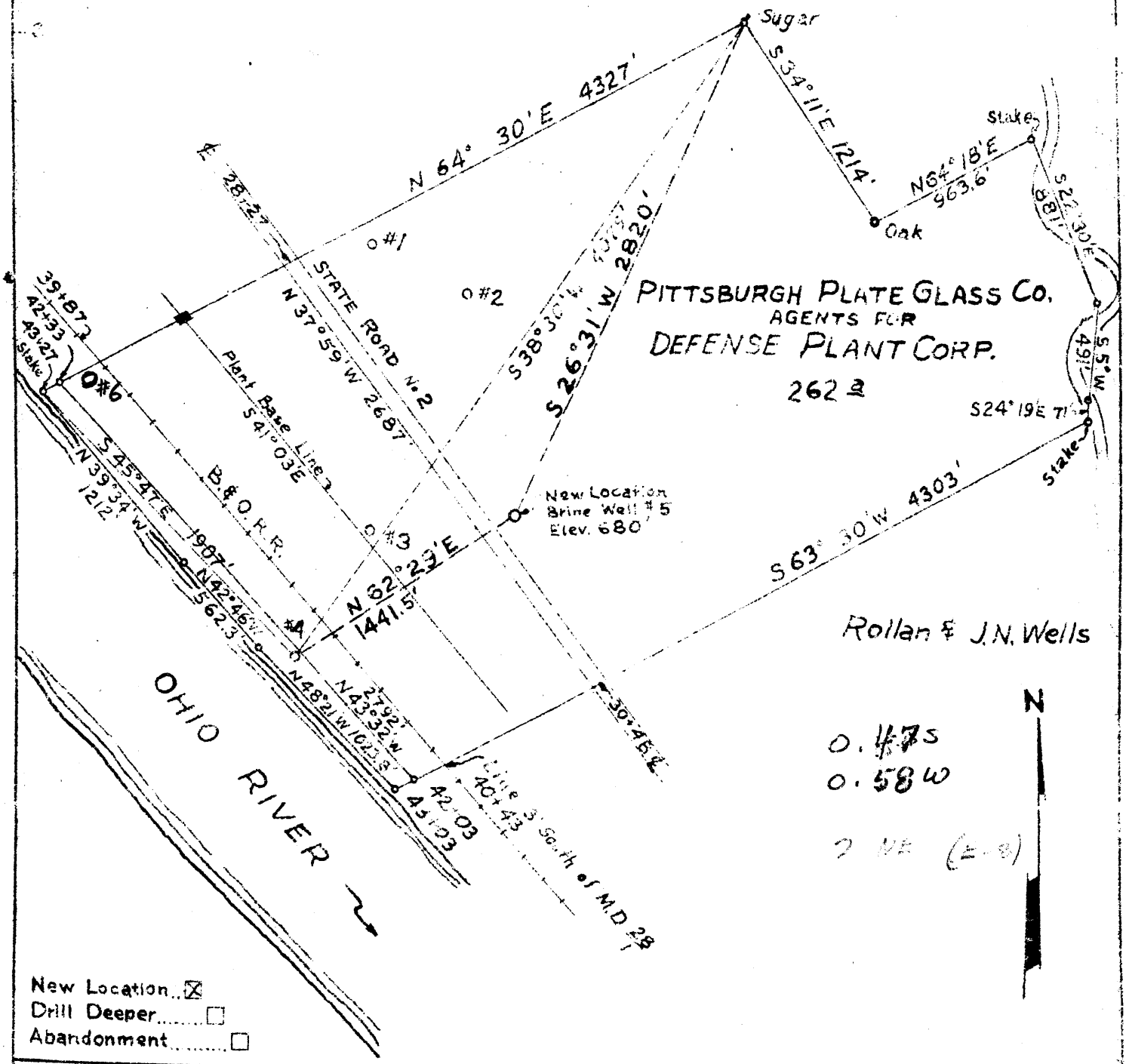
141 No. 6

0.625
0.78W

+ 169 No. 5

Longitude 80° 50'

Pittsburgh Plate Glass Co.



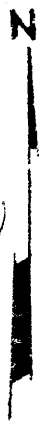
PITTSBURGH PLATE GLASS CO.
AGENTS FOR
DEFENSE PLANT CORP.

262 ±

Rollan & J.N. Wells

0.47S
0.58W

2 NE (E-8)



- New Location...
- Drill Deeper...
- Abandonment...

Company PITTSBURGH PLATE GLASS Co.
 Address NEW MARTINSVILLE W.VA.
 Farm DEFENSE PLANT CORP
 Tract _____ Acres 262 Lease No. _____
 Well (Farm) No. 5 Serial No. _____
 Elevation (Spirit Level) 680
 Quadrangle NEW MARTINSVILLE - NZ
 County MARSHALL District FRANKLIN
 Engineer John L. Michaelis
 Engineer's Registration No. 1242
 File No. _____ Drawing No. _____
 Date 3-19-46 Scale 1" = 800'

STATE OF WEST VIRGINIA
 DEPARTMENT OF MINES
 OIL AND GAS DIVISION
 CHARLESTON

WELL LOCATION MAP
 FILE NO. MARS-169
MARS-191

+ Denotes location of well on United States Topographic Maps, scale 1 to 62,500, latitude and longitude lines being represented by border lines as shown.

- Denotes one inch spaces on border line of original tracing.

9-0 23

WEST VIRGINIA DEPARTMENT OF MINES
OIL & GAS DIVISION
W E L L R E C O R D

Permit No. Mars 169
New Martinsville Quad.

Brine Well
CASING & TUBING

Company	Pittsburgh Plate Glass Co.			
Address	New Martinsville, W. Va.	13	932	932
Farm	Defense Plant Corp. A 262	10	988	988
Location	Ohio River	8 1/2	5513	5513
Well No.	5 Elev. 676	4 1/2 OD		6810
District	Franklin Marshall County			
Surface	Pittsburgh Plate Glass Co.		Casing cemented	
	New Martinsville, W. Va.		13 3/8 OD	932 -5-31-46
Mineral	Wells Bottom Fuel Co.		8 5/8 O.D.	1700 6-1-46
	c/o A.W. Cotton, Uniontown, Penna.			Coal at 204'
Commenced	May 21, 1946			
Completed	Sept. 6, 1946			

	0	8	Rotary Table		
Red Bed and Shells	8	69	Sandy Shale	3175	3204
Red Bed, Sand	69	104	Shale	3204	3280
Sand & Shales	104	200	Sandy Shale	3280	3311
Sand & Shale	200	204	Lime & Shale	3311	3346
Coal Cored	204	208	Sand & Shale	3346	4084
Sand & Shale	208	221	Sandy Lime & Shale	4084	4090
Lime	266	286	Sandy Lime & Shells	4090	4108
Sand & Shale	286	350	Sand & Shells	4108	4146
Lime	350	365	Sand & Shale	4146	4354
Sand & Shale	365	430	Sand, Shale & Shells	4354	4425
Shale & Shells	430	1000	Sand & Shale	4425	4540
Shale & Lime	1000	1046	Sand, Shale & Shells	4540	4623
Lime	1046	1110	Sand & Shale	4623	5855
Sand H	1110	1125	Lime & Sand	5855	5863 — open
Lime	1125	1144	Lime	5863	6069
Cheyty Lime	1144	1155	Oriskany Sand 47'	6069	6116 — Orisk.
Shale & Shells	1155	1190	Sand & Shale	6116	6131
Sand & Shells	1190	1257	Lime	6131	6231
Sandy Shale	1257	1296	Lime & Shale	6231	6247
Sand & Shale	1296	1301	Lime	6247	6399
Sand Cored	1301	1312	Sand & Lime	6399	6445
Greenbrier Lime Cored	1312	1351	Sand & Lime Broken	6445	6453
Sand Cored	1351	1354	Lime	6453	6547
Greenbrier Lime Cored	1354	1364	Lime Cored	6547	6565
Sand	1364	1391	Lime Gr Cored	6565	6597
Sandy Lime H	1391	1420	Lime Cored	6597	6600
Sand	1420	1466	Lime Broken Cored	6600	6603
Sand H	1466	1508	Lime Cored	6603	6612
Sand	1508	1623	Lime Bk Cored	6612	6622
Sand H	1623	1646	Lime cored Broken Gr	6622	6660
Sand	1646	1680	Lime Sm. amts. gypsum	6660	6708
Shale & Shells	1680	1799	Salt cored	6708	6771
Sandy Shale	1799	1810	Lime cored	6771	6792
Sand H	1810	1857	Salt -Lm. cored	6792	6822
Sand & Shale	1857	1888	streaks		
Sandy Shale & shells	1888	1969	Sandy Lime cored	6822	6838
Shale	1969	1990			
Sand	1990	2000			
Shale & Shells	2000	2150			
Shale Bl	2150	2239			
Shale & Sand	2239	2253			
Sandy Shale	2253	2300			
Shale	2300	2335	Oil stains 2315-2330		
Sand	2335	2353			
Sandy Shale	2353	2357			
Sand & Shale	2357	2435			
Shale & Shells	2435	2482			
Sandy Shale	2482	2512			
Shale	2512	2588			
Shale & Sand	2588	2621			
Shale	2621	2890			
Sandy Shale	2890	2917			
Shale	2917	2969			
Sand, Lime & Shale	2969	2991			
Sandy Lime	2991	3005			
Shale	3005	3175			

1312
676
636

5855
676
5179

6069
676
5393