

5100169P

WW-7
8-30-06



West Virginia Department of Environmental Protection
Office of Oil and Gas
WELL LOCATION FORM: GPS

API: 47-051-0169 P WELL NO.: No. 5 Brine Well

FARM NAME: Eagle Natrium, LLC/ Axiall Corporation

RESPONSIBLE PARTY NAME: Eagle Natrium, LLC/ Axiall Corporation

COUNTY: Marshall DISTRICT: Franklin

QUADRANGLE: New Martinsville

SURFACE OWNER: Eagle Natrium, LLC/ Axiall Corporation

ROYALTY OWNER: Eagle Natrium, LLC/ Axiall Corporaton

UTM GPS NORTHING: 4,399,571

UTM GPS EASTING: 513,144 GPS ELEVATION: 685 ft.

The Responsible Party named above has chosen to submit GPS coordinates in lieu of preparing a new well location plat for a plugging permit or assigned API number on the above well. The Office of Oil and Gas will not accept GPS coordinates that do not meet the following requirements:

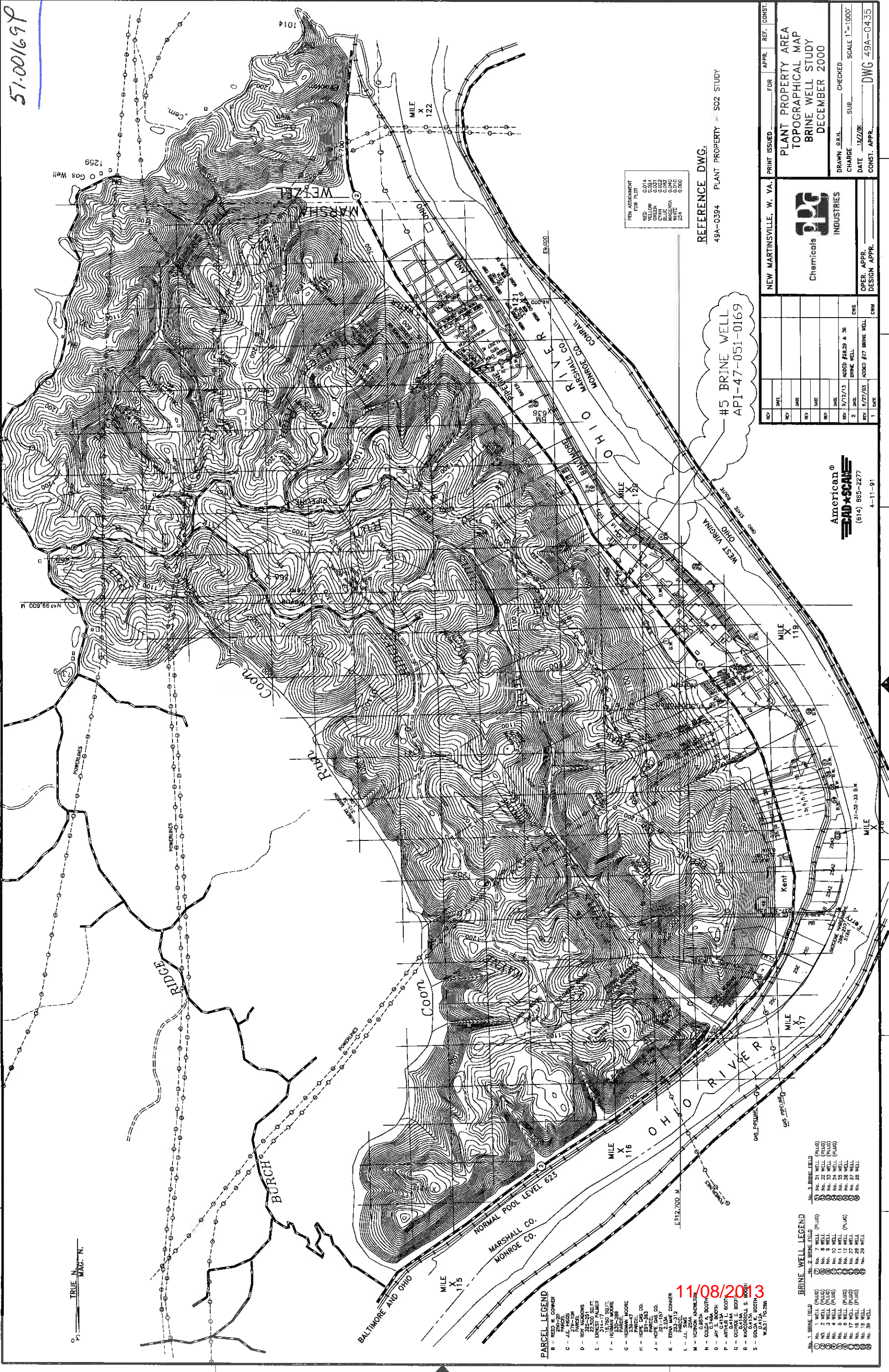
- Datum: NAD 1983, Zone: 17 North, Coordinate Units: meters, Altitude: height above mean sea level (MSL) – meters.
- Accuracy to Datum – 3.05 meters
- Data Collection Method:
Survey grade GPS : Post Processed Differential
Real-Time Differential
Mapping Grade GPS X: Post Processed Differential
Real-Time Differential
- Letter size copy of the topography map showing the well location.**

I the undersigned, hereby certify this data is correct to the best of my knowledge and belief and shows all the information required by law and the regulations issued and prescribed by the Office of Oil and Gas.

J.T. Horan
Signature 10/7/13 Date

Manager, Environmental Control
Title

RECEIVED
Office of Oil and Gas
OCT 10 2013
WV Department of
Environmental Protection



51-00169P

REFERENCE DWG.
49A-0394 PLANT PROPERTY - S02 STUDY

PRINT ISSUED	FOR	APPR.	REF.	CONST.
PLANT PROPERTY AREA TOPOGRAPHICAL MAP BRINE WELL STUDY DECEMBER 2000				
DRAWN BY	CHKD	CHECKED	SCALE 1"=1000'	
CHARGE	SUB	DATE 12/27/00		
CONST. APPR. _____ DWG 49A-0435				

Chemicals INDUSTRIES

NEW MARTINSVILLE, W. VA.

#5 BRINE WELL
API-47-051-0169

REV	DATE	DESCRIPTION	DWG	CHKD
1	12/27/00	ADDED #27 BRINE WELL		
2	5/12/13	ADDED #28, 29 & 30 BRINE WELLS		

American CAD+SCALE
(614) 855-2277
4-11-91

- PARCEL LEGEND**
- A - REED W. CONNER PARCEL
 - B - J.E. HAYS PARCEL
 - C - W. J. HAYS PARCEL
 - D - W. J. HAYS PARCEL
 - E - 22,500 SQ. FT. PARCEL
 - F - HENRY W. MOORE PARCEL
 - G - HENRY W. MOORE PARCEL
 - H - HENRY W. MOORE PARCEL
 - I - HENRY W. MOORE PARCEL
 - J - HENRY W. MOORE PARCEL
 - K - HENRY W. MOORE PARCEL
 - L - HENRY W. MOORE PARCEL
 - M - HENRY W. MOORE PARCEL
 - N - HENRY W. MOORE PARCEL
 - O - HENRY W. MOORE PARCEL
 - P - HENRY W. MOORE PARCEL
 - Q - HENRY W. MOORE PARCEL
 - R - HENRY W. MOORE PARCEL
 - S - HENRY W. MOORE PARCEL

- BRINE WELL LEGEND**
- 1 - BRINE FIELD
 - 2 - BRINE FIELD
 - 3 - BRINE FIELD
 - 4 - BRINE FIELD
 - 5 - BRINE FIELD
 - 6 - BRINE FIELD
 - 7 - BRINE FIELD
 - 8 - BRINE FIELD
 - 9 - BRINE FIELD
 - 10 - BRINE FIELD
 - 11 - BRINE FIELD
 - 12 - BRINE FIELD
 - 13 - BRINE FIELD
 - 14 - BRINE FIELD
 - 15 - BRINE FIELD
 - 16 - BRINE FIELD
 - 17 - BRINE FIELD
 - 18 - BRINE FIELD
 - 19 - BRINE FIELD
 - 20 - BRINE FIELD
 - 21 - BRINE FIELD
 - 22 - BRINE FIELD
 - 23 - BRINE FIELD
 - 24 - BRINE FIELD
 - 25 - BRINE FIELD
 - 26 - BRINE FIELD
 - 27 - BRINE FIELD
 - 28 - BRINE FIELD
 - 29 - BRINE FIELD
 - 30 - BRINE FIELD
 - 31 - BRINE FIELD
 - 32 - BRINE FIELD
 - 33 - BRINE FIELD
 - 34 - BRINE FIELD
 - 35 - BRINE FIELD
 - 36 - BRINE FIELD
 - 37 - BRINE FIELD
 - 38 - BRINE FIELD
 - 39 - BRINE FIELD
 - 40 - BRINE FIELD

11/08/2013