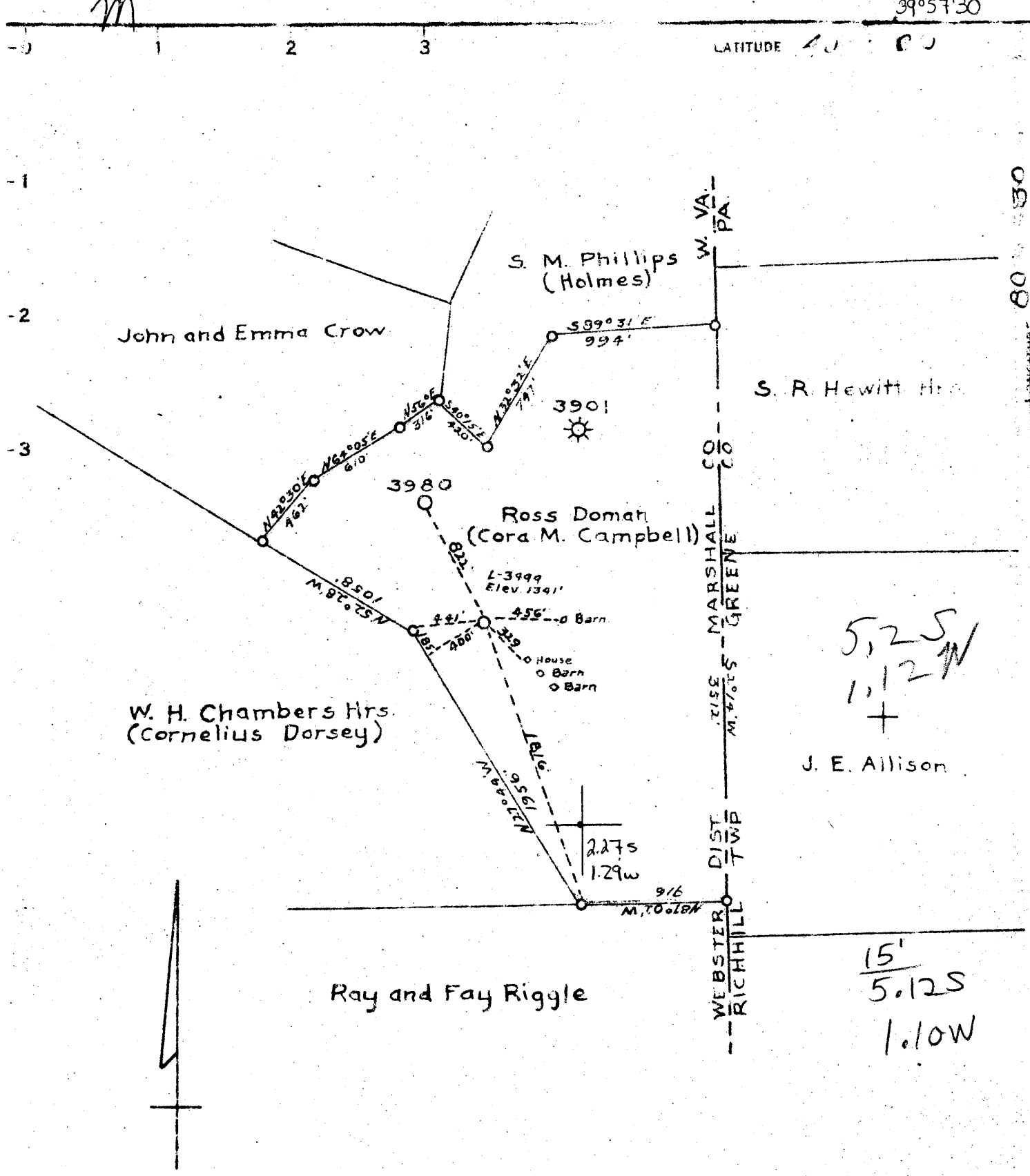


39°57'30"

LATITUDE 40 00



COAL OWNED BY Monongalia Improvement Co. & A.M. Nichols  
Waynesburg Pa.

- NEW LOCATION...
- DRILL DEEPER...
- ABANDONMENT...

COMPANY The Manufacturers Light and Heat Co.  
 ADDRESS 800 Union Trust Building, Pittsburgh, Pa.  
 FARM F.R. & Ola Doman  
 TRACT \_\_\_\_\_ ACRES 137 LEASE NO. 21654  
 WELL (FARM) NO. 3 SERIAL NO. 3794  
 ELEVATION (SPIRIT LEVEL) 1341'  
 QUADRANGLE Cameron  
 COUNTY Marshall DISTRICT Webster  
 ENGINEER \_\_\_\_\_  
 ENGINEER'S REGISTRATION NO. \_\_\_\_\_  
 FILE NO. \_\_\_\_\_ DRAWING NO. Y-13-80  
 DATE August 5, 1948 SCALE 1"=800'

STATE OF WEST VIRGINIA  
 DEPARTMENT OF MINES  
 OIL AND GAS DIVISION  
 CHARLESTON

### WELL LOCATION MAP

FILE NO. MARS-189

⊕ DENOTES LOCATION OF WELL ON UNITED STATES TOPOGRAPHIC MAPS. SCALE 1 TO 62,500. LATITUDE AND LONGITUDE LINES BEING REPRESENTED BY BORDER LINES AS SHOWN.

--- DENOTES ONE INCH SPACES ON BORDER LINE OF ORIGINAL TRACING.

WEST VIRGINIA DEPARTMENT OF MINES  
OIL & GAS DIVISION  
W E L L R E C O R D

Permit No. Mars 189

Gas Well  
CASING & TUBING

Cameron Quad.

Company

The Manf. Light & Heat Co.

Address

Farm

F.R. & Ola Doman Acres 137

Cond. 16 16

Well No.

3999 Elev. 1341

10 847 847

District

Webster Marshall County

8 1/2 1589 1589

Commenced

Nov. 27, 1948

6 5/8 1919 1919

Completed

Jan. 18, 1949

4 2081

Water

846'

Anchor Packer

Date shot

L-10-49 Nitro-glycerine 30 qts.

6 5/8 x 4

Volume

Depth 1980-2000

Depth 1926

Rock Pressure

50/10 W 1", 55,428 C.F. Big Injun  
284# 24 hrs.

L-18-49

Conductor

16

Slate & Shells

16 55

Lime

55 75

Slate

75 95

Lime

95 125

Slate & Shells

125 350

Lime

450 490

✓Waynesburg Coal

490 493

Lime

493 685

Slate

685 691

Lime

691 730

Sand

780 794

✓Pittsburgh Coal

794 800

Lime

800 840

Sand

840 855

Slate

855 860

Lime

860 890

Pink Rock

890 895

Eritty Lime

895 930

Red Rock

930 950

Slate & Shells

950 970

Red Rock

970 930

M. Sand

980 1015

Slate

1015 1025

Lime

1025 1058

Red Rock

1058 1075

Lime

1075 1235

Slate & Shells

1235 1319

Lime

1319 1349

✓Coal Upper Freeport Coal

1349 1354

Lime

1354 1385

✓Coal Lower Freeport

1385 1388

✓Lime & Slate 1st Gas Sand

1388 1414

Sand

1414 1431

✓Coal Upper Freeport

1431 1435

Slate & Shells

1435 1450

✓Gas Sand 2nd

1450 1518

Shale

1518 1568

✓Coal

1568 1571

✓Sand 1st Salt

1571 1624

Lime

1624 1668

Slate

1668 1725

✓Sand 2nd Salt

1725 1850

Slate

1850 1876

✓Pencil Cave

1876 1880

✓Big Lime

1880 1898

✓Big Injun

1898 2067

Total depth

2067

Steel line run at 802'  
Gas at 1388'  
Steel line run at 1903. Gas at  
1980-1982  
32/10 W 1 1/2" 99,785 C.F.

1  
1880  
25  
-----  
1905  
1341  
-----  
624

1880  
1341  
-----  
539

Tubing record (Thds. on)

Perf.	20'	3"
Tubing 1 jt	24'	0
Perf.	23'	11
Tubing 3 jts.	74'	3
Packing 6 5/8		
Tubing 79 jts.	1938'	8
Total	2081	1

MINUTE PICKUP IN 4" TUBING

1	2	3	4	5	6	7	8	9	10	11	12	13	14	15	20	30	45	60	24 hr.
2	5	7	10	12	15	17	20	22	25	27	29	31	33	35	47	61	86	103	284