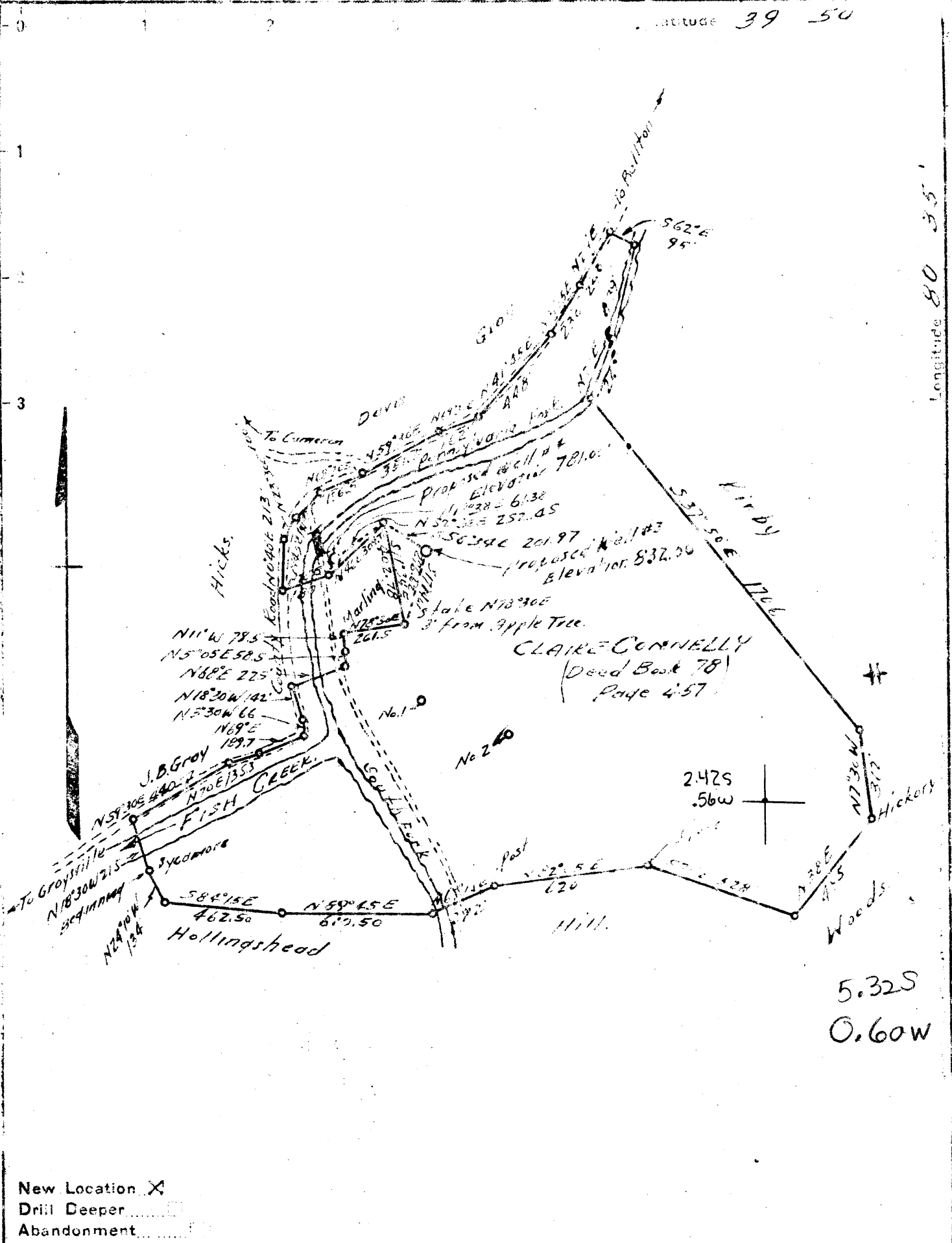


3947'30"

Latitude 39 50

Longitude 80 35'



New Location X
 Drill Deeper
 Abandonment

Company Guy B. & A.G. PATTERSON.
 Address CAMERON W.VA.
 Farm CLAIRE CONNELLY
 Tract 1 Acres 84.54 Lease No. _____
 Well (Farm) No. 3-4 Serial No. _____
 Elevation (Spirit Level) 832.00 - 781.00
 Quadrangle CAMERON.
 County MARSHALL District LIBERTY
 Engineer N. JAMES SCHELLHASE
 Engineer's Registration No. 1673
 File No. G.57-P.108. Drawing, I.C. _____
 Date SEPT 17, 1948 Scale 1 inch = 500 FT.

STATE OF WEST VIRGINIA
 DEPARTMENT OF MINES
 OIL AND GAS DIVISION
 CHARLESTON

WELL LOCATION MAP
 FILE NO. MAES-195-#3

+ Denotes location of well on United States Topographic Maps, scale 1 to 62,500. latitude and longitude lines being represented by border lines as shown.
 - Denotes one inch spaces on border line of original tracing.