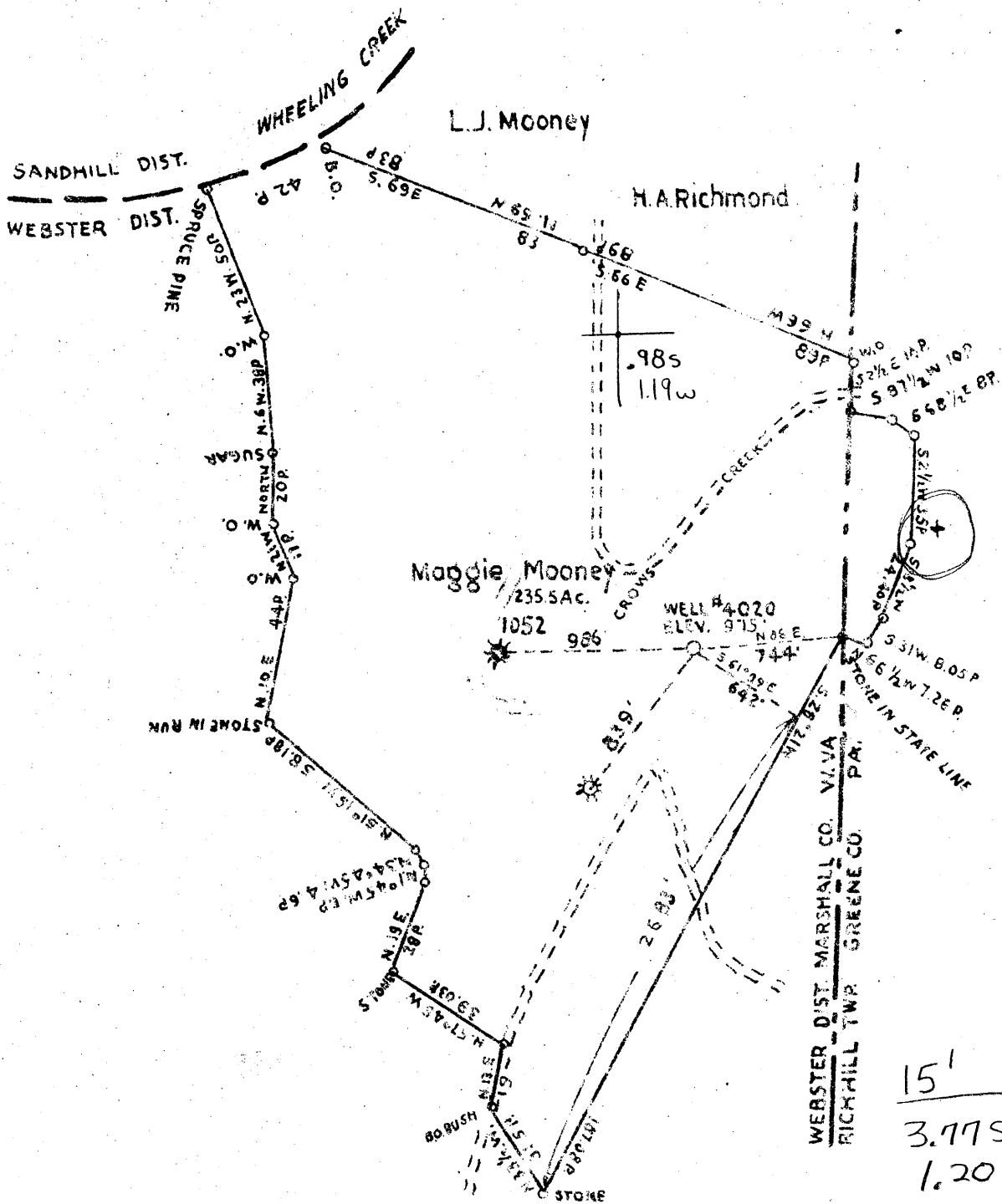


39°57'30"

LATITUDE 40 00



COAL OWNED BY STATE OF WEST VIRGINIA

WELL LOCATION

DRILL DEEPER

ABANDONMENT

COMPANY THE MANUFACTURERS LIGHT AND HEAT CO.

ADDRESS 300 UNION TRUST BUILDING PITTSBURGH PA

ARM MAGGIE MOONEY

TRACT _____ ACRES 237.5 LEASE NO. 2901

WELL (FARM) NO. 1 SERIAL NO. 4020

ELEVATION (SPIRIT LEVEL) 975'

QUADRANGLE CAMERON

COUNTY MARSHALL DISTRICT WEBSTER

ENGINEER A. C. Streater & Jenkins

ENGINEER'S REGISTRATION NO. _____

FILE NO. _____ DRAWING NO. Y-13-132

DATE NOV. 22-48 SCALE 1" = 800'

STATE OF WEST VIRGINIA
 DEPARTMENT OF MINES
 OIL AND GAS DIVISION
 CHARLESTON

WELL LOCATION MAP

FILE NO. MARS-201

★ DENOTES LOCATION OF WELL ON UNITED STATES TOPOGRAPHIC MAPS. SCALE 1 TO 62,500. LATITUDE AND LONGITUDE LINES BEING REPRESENTED BY BORDER LINES AS SHOWN.

--- DENOTES ONE INCH SPACES ON BORDER LINE OF ORIGINAL TRACING.

WEST VIRGINIA DEPARTMENT OF MINES
OIL & GAS DIVISION
W E L L R E C O R D

Permit No. Mars 201
Cameron Quad.

Dry Hole
CASING & TUBING

Company	The Manf. Light & Heat Company		
Address	800 Union Trust Bldg., Pittsburgh, Pa.		
Farm	Maggie Mooney	Acres 233	10 448 448
Location			8 1/2 984 984
Well No.	7-4020	Elev. 975'	6 5/8 1520 1520
District	Webster Marshall County		
Surface	Charles C. Mooney, Dallas, W.Va.		Coal at 315' 60 "
Mineral	The Mfrs. Light & Heat Co.		411' 84"
	800 Union Trust Bldg., Pittsburgh, Pa.		
Water	4 blrs. 145'		

Slate and Lime	0	120
Slate	120	130
Lime	130	315
Mapletown Coal	315	320
Black Slate	320	325
Lime	325	411
Pittsburgh Coal	411	418
Lime	418	450
Slate & Shells	450	600
Red Rock	600	615
Lime	615	640
Slate	640	670
Shells	670	875
Big Dunkard	875	920
Broken up Lime	1000	1035
Gas Sand	1035	1175
Slate & Shells	1175	1350
Sand	1350	1410
Shells	1450	1520
Big Injun	1520	1748
Slate & Shells	1748	2070
Hard Lime	2070	2140
Slate	2140	2200
Shell	2200	2279
Sand (#50)	2279	2291

275
1175
2564

1520
975
545

(414)

Steel Line run at 418'
Run 10" casing at 448'
Gas at 1052'
Steel line run at 1058'
Steel Line run at 1533'
Flugged back to 1670'
Test at 1825' 5/10 W 1/8 equals 274 C.F.
Gas at 2282. Test 46/10 W 1/4" equals , 3,323 C.F.