

Manor Real Estate Co.

COAL OWNED BY ~~Everett F. Moore Esq.~~

NEW LOCATION   
 DRILL DEEPER   
 ABANDONMENT  *issued July 29, 1970*

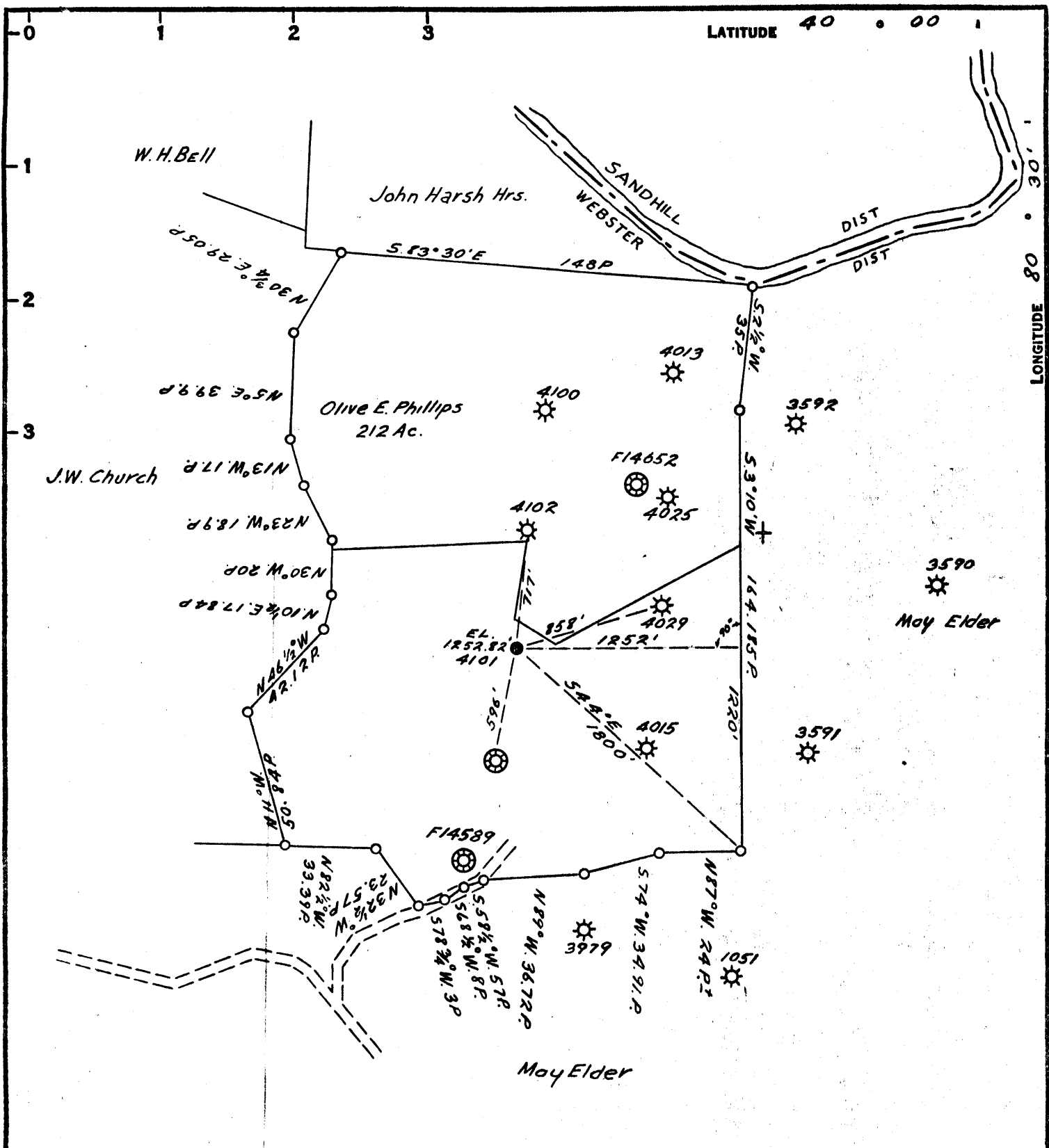
COMPANY The Manufacturers Light & Heat Co.  
 ADDRESS 800 Union Trust Bldg. Pgh. Pa.  
 FARM Olive E. Phillips.  
 TRACT \_\_\_\_\_ ACRES 212 LEASE NO. 19484  
 WELL (FARM) NO. 8 SERIAL NO. 4101  
 ELEVATION (SPIRIT LEVEL) 1252.82'  
 QUADRANGLE Cameron NE  
 COUNTY Marshall DISTRICT Webster  
 ENGINEER James L. Gray  
 ENGINEER'S REGISTRATION NO. \_\_\_\_\_  
 FILE NO. \_\_\_\_\_ DRAWING NO. 413-737  
 DATE July 30, 1952 SCALE 1" = 800'

STATE OF WEST VIRGINIA  
 DEPARTMENT OF MINES  
 OIL AND GAS DIVISION  
 CHARLESTON

WELL LOCATION MAP

*Plugging?*  
 FILE NO. MARS-238-P  
**Cancelled- 1-29-71**

+ DENOTES LOCATION OF WELL ON UNITED STATES TOPOGRAPHIC MAPS, SCALE 1 TO 62,500. LATITUDE AND LONGITUDE LINES BEING REPRESENTED BY BORDER LINES AS SHOWN.  
 - DENOTES ONE INCH SPACES ON BORDER LINE OF ORIGINAL TRACING.



**Manor Real Estate Co.**

COAL OWNED BY ~~Everett F. Moore Esq.~~

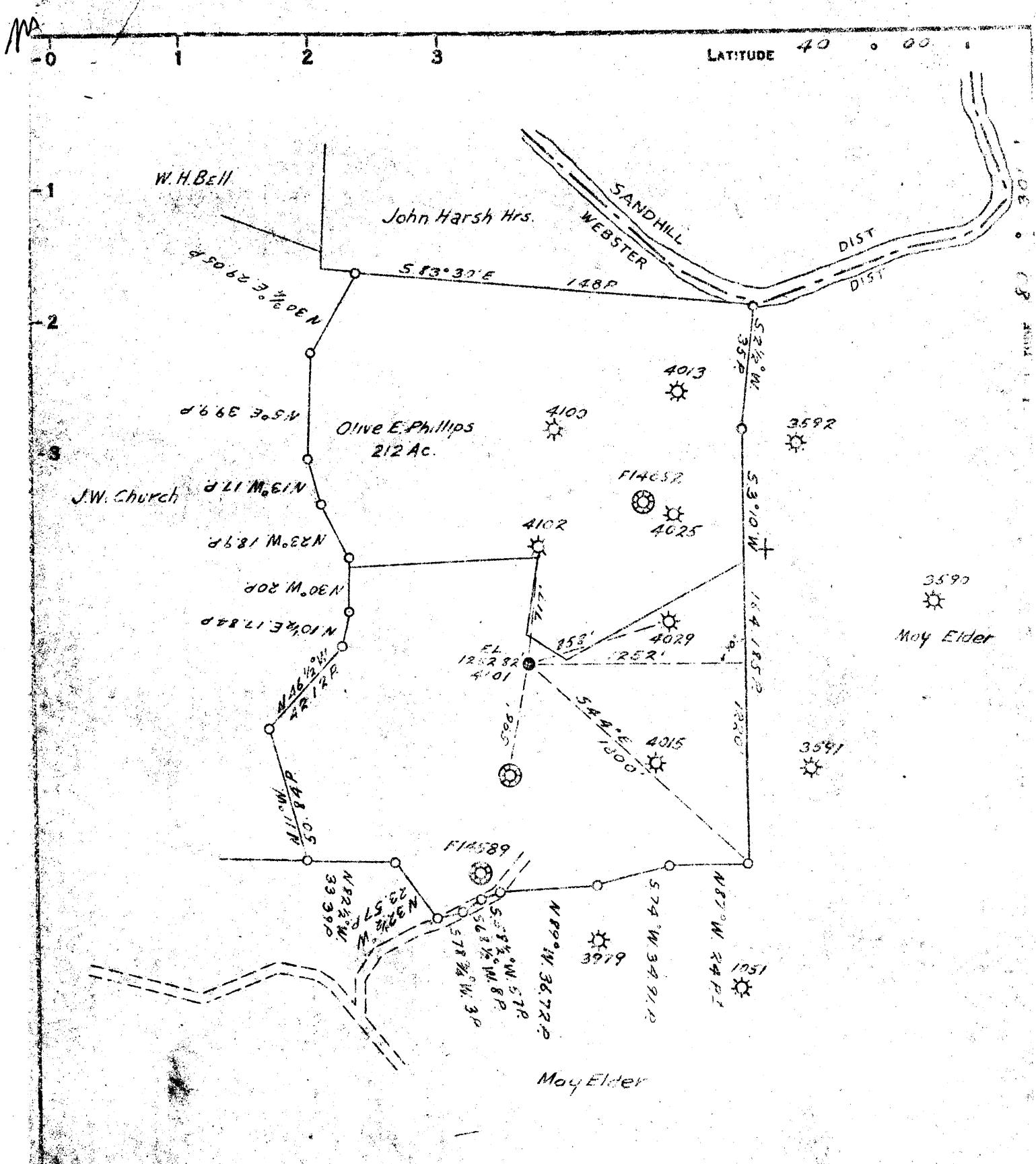
NEW LOCATION   
 DRILL DEEPER   
 ABANDONMENT  *issued July 27, 1970*

COMPANY The Manufacturers Light & Heat Co.  
 ADDRESS 800 Union Trust Bldg. Pgh. Pa.  
 FARM Olive E. Phillips.  
 TRACT \_\_\_\_\_ ACRES 212 LEASE No. 19484  
 WELL (FARM) No. 8 SERIAL No. 4101  
 ELEVATION (SPIRIT LEVEL) 1252.82'  
 QUADRANGLE Cameron NE  
 COUNTY Marshall DISTRICT Webster  
 ENGINEER James L. Gray  
 ENGINEER'S REGISTRATION No. \_\_\_\_\_  
 FILE No. \_\_\_\_\_ DRAWING No. 413-737  
 DATE July 30, 1952 SCALE 1" = 800'

STATE OF WEST VIRGINIA  
 DEPARTMENT OF MINES  
 OIL AND GAS DIVISION  
 CHARLESTON

**WELL LOCATION MAP**  
 File No. MARS-238-P

+ DENOTES LOCATION OF WELL ON UNITED STATES TOPOGRAPHIC MAPS, SCALE 1 TO 62,500. LATITUDE AND LONGITUDE LINES BEING REPRESENTED BY BORDER LINES AS SHOWN.  
 - DENOTES ONE INCH SPACES ON BORDER LINE OF ORIGINAL TRACING.



COAL OWNED BY Everett F. Moore Esq.

NEW LOCATION   
 DRILL DEEPER   
 ABANDONMENT

COMPANY The Manufacturers Light & Heat Co.  
 ADDRESS 300 Union Trust Bldg. Pgh. Pa.  
 FARM Olive E. Phillips  
 TRACT \_\_\_\_\_ ACRES 212 LEASE NO. 17484  
 WELL (FARM) NO. 8 SERIAL NO. 4101  
 ELEVATION (SPIRIT LEVEL) 1252.82'  
 QUADRANGLE Cameron  
 COUNTY Marshall DISTRICT Webster  
 ENGINEER James L. Gray  
 ENGINEER'S REGISTRATION NO. \_\_\_\_\_  
 DATE July 30, 1958 DRAWING NO. Y13-737  
 SCALE 1" = 200'

STATE OF WEST VIRGINIA  
 DEPARTMENT OF MINES  
 OIL AND GAS DIVISION  
 CHARLESTON

WELL LOCATION MAP  
 FILE NO. MARS 232

+ DENOTES LOCATION OF WELL ON UNITED STATES TOPOGRAPHIC MAPS, SCALE 1 TO 62,500, LATITUDE AND LONGITUDE LINES BEING REPRESENTED BY BORDER LINES AS SHOWN.  
 - DENOTES ONE INCH SPACES ON BORDER LINE OF ORIGINAL TRACING.

*Mars-238*

**THE MANUFACTURERS LIGHT & HEAT COMPANY**  
Company

Division **5**  
 Record of well No. **4101** on **O. E. Phillips** Farm **212** Acres  
**Majorsville** Field **Webster** Township **Marshall** County **W. Va.** State  
 Began Commenced **19** Completed **19**  
 Drilling Commenced **August 6, 1952** Completed **October 13, 1952**  
 Contractor **M. C. Brumage** Address **Waynesburg, Pennsylvania**  
 Driller's Name **Walter Straight, Andy Workman**  
 Tool Dressers: **Milt Santee, Wilber Thomas**

CASING AND TUBING RECORD

Depth	16"	12"	8"	6"	4"	3"
16'		759'	1375'	1839'		
16'		759'	1375'	000'		

PACKER RECORD

SHOULDER RECORD

Date	Depth Set	Type Packer	Date	Type Expansion	Amount	DEPTH		Volume Before Cut Ft	Volume After Cut
						Top	Bottom		
<b>NONE</b>									

VOLUME AND PRESSURE

Date	Reading in Inches	Liquid	Size Orifice	Viscosity	Sand	PRESSURE IN MIN					24 Hour R.P.	Max R.P.
						1	5	10	30	60		
<b>11-12-52</b>	<b>34.0</b>	<b>Water</b>	<b>1"</b>	<b>15.711</b>	<b>SALT</b>	<b>0</b>	<b>0</b>	<b>6</b>	<b>36</b>	<b>71</b>	<b>21.8</b>	

TOTAL INITIAL OPEN FLOW

CUBIC FEET PER 24 HOURS

FORMATION	TOP	BOTTOM	THICKNESS	REMARKS
Clay	0	12	12	
Stone	12	18	6	
Red Rock	18	26	8	
Slate	26	75	49	
Line	75	110	35	
Slate	110	135	25	
Line	135	150	15	
Slate	150	163	13	
Red Rock	163	172	9	
Line	172	184	12	
Slate	184	195	11	
Red Rock	195	202	7	
Slate & Shells	202	237	35	
Line	237	257	20	
Slate	257	275	18	
Line	275	285	10	
Slate	285	312	27	
Coal	312	314	2	
Line	314	340	26	
Sand	340	350	10	
Slate	350	360	10	
Line	360	375	15	
Slate	375	414	39	
Coal	414	418	4	
Slate	418	435	17	
Line	435	600	165	
Slate	600	615	15	
Line	615	685	70	

Examined above information and measurements and found to be correct by

Examined and Approved by

Contractor

Field Superintendent

NOTE: The above blank must be filled out carefully by the contractor with a complete and accurate record of the well, and a company, when presented for payment of bill for drilling. All formations and known sands must be given by their proper name, with steel line measurements, and under the head of "Remarks" must be recorded what sand and at what depth (ft). General water was found in the vicinity of some of the parts of the sand and thickness of pay.

*Elv - Nov. 82*

FEB 1 1953

O. E. PHILLIPS No. 4101

M. L. & H. Co.

(Page)  
MARS-238

**THE MANUFACTURERS LIGHT & HEAT COMPANY**  
Company

Division **5**

Record of well No. **1101** on **O. E. Phillips** Farm **212** Acres

**Majorsville** Field **Webster** Township District **Marshall** County **W. Va.** State

Rig Commenced **19** Completed **19**

Drilling Commenced **19** Completed **19**

Contractor \_\_\_\_\_ Address \_\_\_\_\_

Driller's Name \_\_\_\_\_

**CASING AND TUBING RECORD**

	Conductor	13"	10"	8 1/4"	7"	6 5/8"	5 3/16"	4"	3"	
Used in Drig										
Left in well										

**PACKER RECORD**

**SHOOTING RECORD**

Date	Depth Set	Type Packer	Date	Type Explosive	Amount	DEPTH		Volume Before Cu. Ft.	Volume After Cu. Ft.
						Top	Bottom		

**VOLUME AND PRESSURE**

Date	Reading in Inches	Liquid	Size Orifice	Volume	Sand	PRESSURE IN MIN					24 Hour R P	Max. R. P.	Hour	
						1	5	10	30	60				

**TOTAL INITIAL OPEN FLOW**

**CUBIC FEET PER 24 HOURS**

FORMATION	TOP	BOTTOM	THICKNESS	REMARKS
Slate	685	712	27	
✓ Pittsburgh Coal	712	718	6	
Slate	718	735	17	Run Steel Line at 718 1/2 Bailer water per
Lime	735	800	65	hr. in coal. Run 10" & Cemented in at 750
Slate & Shells	800	824	24	with 200 Bags Cement & 1 Bag Aquagol
Red Rock	824	834	10	No Cement Returns
Slate & Shells	834	885	51	
Red Rock	885	905	20	
Slate	905	975	70	
Red Rock	975	995	20	
Slate & Shells	995	1110	115	
Sand	1110	1140	30	
Slate & Shells	1140	1175	35	
Lime	1175	1195	20	
Slate	1195	1225	30	
Sand (B.D.)	1225	1252	27	Little gas at 1238
Slate	1252	1270	18	Run 8" Casing & Cemented in at 1375
Lime	1270	1315	45	175 Bags Cement & 1 Bag Aquagol
Slate	1315	1359	44	Cement returned at 1360
Sand	1359	1410	51	
Slate	1410	1483	73	
Sand	1483	1524	41	Gas at 1493 S.L.M. 27, 144 cu.ft.
Slate	1524	1556	32	Gas at 1524 - 29,386 cu.ft.
Lime	1556	1585	29	1 Bailer water per hr. at 1495
Slate & Shells	1585	1710	125	
Sand	1710	1776	66	
Lime	1776	1816	40	
Inten Sand	1816	1895	79	

Examined above information and measurements and found to be correct by

375  
Contractor

Examined and Approved by

*Clas C. H. 19*

Field Superintendent

NOTE - The above blank must be filled out carefully by the contractor, with a complete and accurate record of the well, and accompany, when presented for payment of the bill for drilling. All formations and known sands must be given by their proper name, with steel line measurements, and under the head of "Remarks" must be recorded if what sand and at what depth (oil, gas or water was found, the quantity of same, the quality of the sand, and thickness of pay.