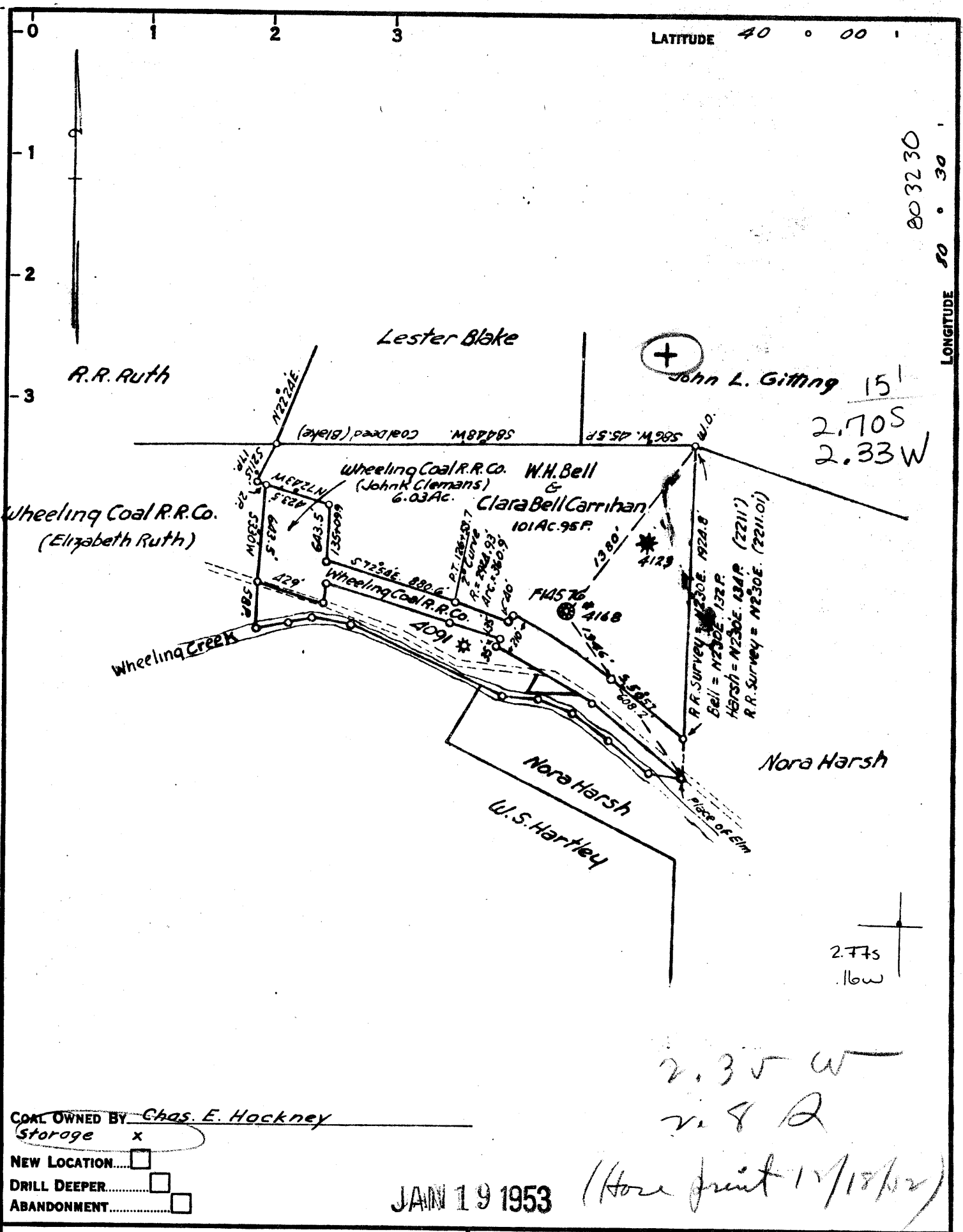


lm



COAL OWNED BY Chas. E. Hockney
Storage x

NEW LOCATION...

DRILL DEEPER...

ABANDONMENT...

JAN 19 1953

COMPANY The Manufacturers Light & Heat
ADDRESS 800 Union Trust Bldg. Pgh. Pa.
FARM William Bell
TRACT _____ ACRES 100 LEASE No. 19416
WELL (FARM) No. 3 SERIAL No. 4168
ELEVATION (SPIRIT LEVEL) 831'
QUADRANGLE Cameron N.E
COUNTY Marshall DISTRICT South Hill
ENGINEER AC Streater J.D.M.
ENGINEER'S REGISTRATION No. _____
FILE No. _____ DRAWING No. V-13-795
DATE Nov. 25, 1952 SCALE 1" = 800'

STATE OF WEST VIRGINIA
DEPARTMENT OF MINES
OIL AND GAS DIVISION
CHARLESTON

WELL LOCATION MAP
FILE No. MARS-244

+ DENOTES LOCATION OF WELL ON UNITED STATES TOPOGRAPHIC MAPS, SCALE 1 TO 62,500. LATITUDE AND LONGITUDE LINES BEING REPRESENTED BY BORDER LINES AS SHOWN.

- DENOTES ONE INCH SPACES ON BORDER LINE OF ORIGINAL TRACING.

00 6-6 22

Mars-244
Cameron Fund

Storage -

The Manufacturers Light & Heat Company
Company

Division 5
Record of well No. 4168 **(3)** on William Bell Farm 100 Acres
Majorsville Field Sandhill Marshall County W. Va. State
Casing completed 19 Completed 19
Casing commenced May 23, 1952 Completed October 14, 1952
By M. C. Brumage Address Waynesburg, Pa.
Name Carl Anderson & Taylor Parry

CASINGS AND TUBING RECORD

118'6"	320'	925'						
118'6"	320'	925'			1048'8"			

SHOOTING RECORD

Date	Time	Depth	Volume	DEPTH		Volume	
				Top	Bottom	Before Cut Off	After Cut Off
None							

LOG TIME AND PRODUCTION

Date	Time	Water	Gas	Pressure	Production	PRESSURE IN MIN.				24 Hour R.P.	Max R.P.	Hours
						1	5	15	30			
10-14-52	28/10	water	3"	373.263	Gas Sand	14	116	218	372	396	408	48

NETAL DEPTH

FEET PER 24 HOURS

FORMATION	TOP	BOTTOM	THICKNESS	REMARKS
Mapletown Coal	185	190	5	
Pittsburgh Coal	295	300	5	
Little Dunkard	615	665	50	
Big Dunkard	725	742	17	
First Gas Sand	935	975	40	
Second Gas Sand	1045	1065	20	
First Salt Sand	1220	1250	30	
Maxon Sand	1270	1340	70	
Big Lime	1345	1372	27	
Big Injun	1372	1577	205	
Thirty Foot	2080	2092	12	
Fifty Foot	2175	2187	12	
Gordon Stray	2245			
Total Depth		2265		

The above is original record of sands. Well # F-14576 which had been plugged several years.
Cleaned out again October 1952 to original depth of 2265 and plugged back as follows

Material	Depth	Remarks
Limestone Chips	2265	1432 Drove with tools
6 1/2" Lead Plug	1432	13" and 10" Casing Cemented in.
Limestone Chips & Cement	1432	1125 Screwed on Original 8 1/4" at 360'7" using
8 1/4" Lead Plug	1125	8 1/4" X 1 1/2" thd. Spang Steel Nipple
Total Depth top of Plug		1125 5 3/16" Casing Suspended at 1038'6" inside
		of 8 1/4" Casing. Three set of centralisers on
		5 3/16" and cemented to surface.
		Original Pipe Fished Out as follows
		69'7" of 8 1/4". 719'5" of 6 5/8".
		1604'3" of 3"

Contractor *Cameron Fund* Field Superintendent
Approved by _____

FEB 1 1953

WILLIAM BELL No. A 168 **(3)** M. L. & H. Co. - MARS-244