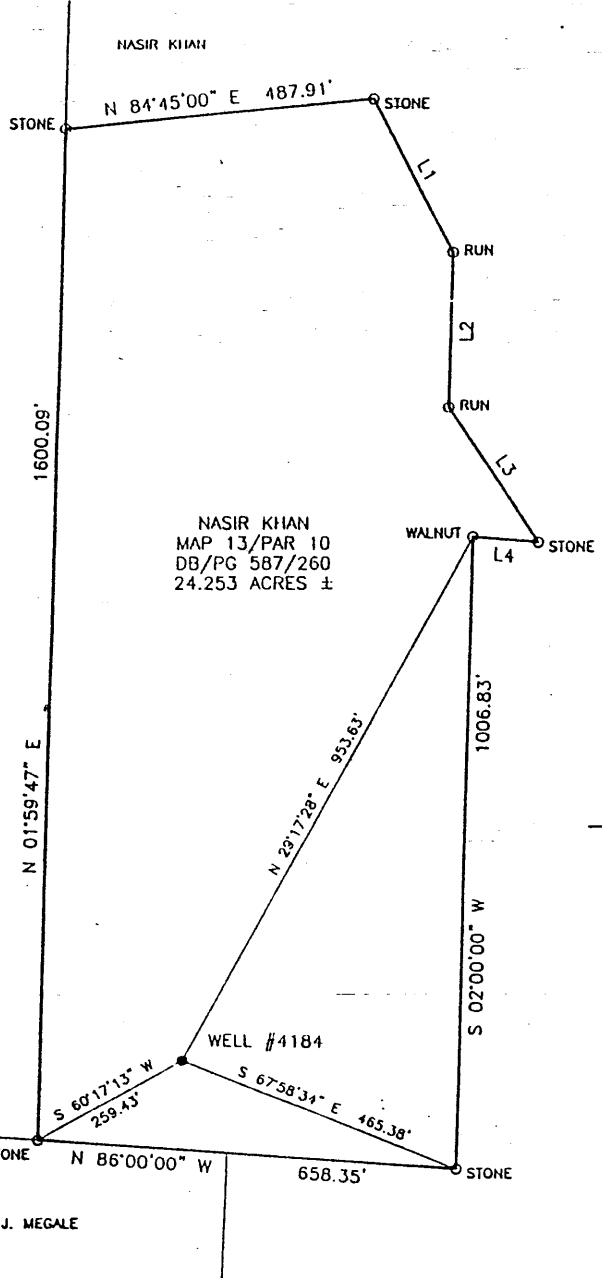


LATITUDE 40°00'00"

LONGITUDE 80°30'00"



LINE	BEARING	DISTANCE
L1	S 27°30'00" E	267.46'
L2	S 02°15'00" W	241.89'
L3	S 33°15'00" E	254.27'
L4	N 85°30'00" W	103.46'

(+) DENOTES LOCATION OF WELL ON UNITED STATES TOPOGRAPHIC MAPS

FILE NO. SHOE 4184  
 DRAWING NO. SHOE 4184  
 SCALE 1" = 300'  
 MINIMUM DEGREE OF ACCURACY 1 IN 2,500  
 PROVEN SOURCE OF ELEVATION U.S.G.S. MONUMENT  
BLOOM 1,400'

I THE UNDERSIGNED, HEREBY CERTIFY THAT THIS PLAT IS CORRECT TO THE BEST OF MY KNOWLEDGE AND BELIEF AND SHOWS ALL THE INFORMATION REQUIRED BY LAW AND THE REGULATIONS ISSUED AND PRESCRIBED BY THE DEPARTMENT OF ENERGY.  
 (SIGNED) *George D. Six*  
 GEORGE D. SIX  
 R.P.C.E. \_\_\_\_\_ P.S. #2000



STATE OF WEST VIRGINIA  
 DIVISION OF ENVIRONMENTAL PROTECTION  
 OFFICE OF OIL AND GAS  
 #10 McJUNKIN ROAD  
 NITRO, WV 25143-2506

BLUE MOUNTAIN ENGINEERING  
 58 WADESTOWN PIKE  
 BURTON, WV 26562  
 PHONE: (304) 662-6486

DATE MARCH 8, 2000  
 OPERATOR'S WELL NO. #4184  
 API WELL NO. \_\_\_\_\_

WELL TYPE: OIL \_\_\_ GAS X LIQUID INJECTION \_\_\_ WASTE DISPOSAL \_\_\_ STATE 47 COUNTY 051 PERMIT 0250P  
 (IF "GAS,") PRODUCTION \_\_\_ STORAGE X DEEP \_\_\_ SHALLOW X ABANDONED \_\_\_

LOCATION: ELEVATION 1,154.98' WATER SHED UNNAMED TRIBUTARY TO WHETSTONE RUN  
 DISTRICT SAND HILL COUNTY MARSHALL  
 QUADRANGLE MAJORSVILLE WV 7.5'

SURFACE OWNER NASIR KHAN ACREAGE 24.253 ±  
 OIL & GAS ROYALTY OWNER \_\_\_\_\_ LEASE ACREAGE \_\_\_\_\_  
 LEASE NO. \_\_\_\_\_

PROPOSED WORK: DRILL \_\_\_ CONVERT \_\_\_ DRILL DEEPER \_\_\_ REDRILL \_\_\_ FRACTURE OR  
 STIMULATE \_\_\_ PLUG OFF OLD FORMATION \_\_\_ PERFORATE NEW  
 FORMATION \_\_\_ OTHER PHYSICAL CHANGE IN WELL (SPECIFY) \_\_\_\_\_

PLUG AND ABANDON X CLEAN OUT AND REPLUG \_\_\_

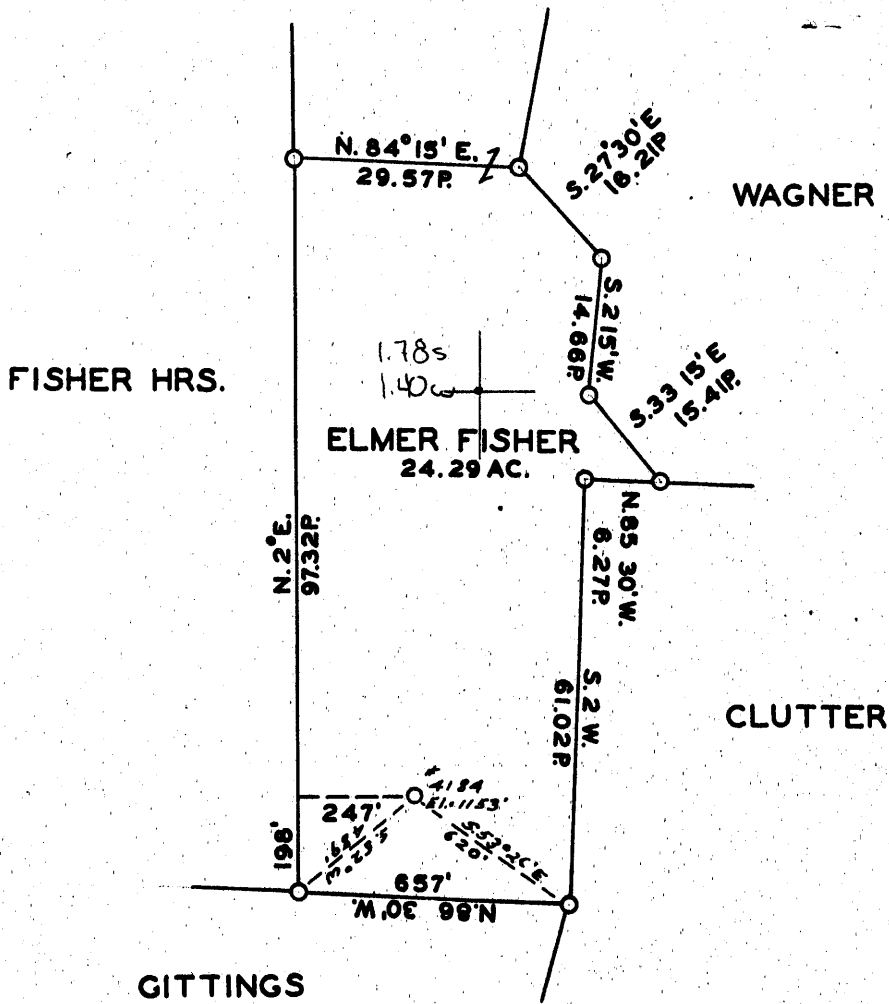
TARGET INFORMATION \_\_\_\_\_ ESTIMATED DEPTH \_\_\_\_\_  
 WELL OPERATOR CONSOLIDATION COAL CO. DESIGNATED AGENT ROGER DUCKWORTH  
 ADDRESS P.O. BOX 100 ADDRESS P.O. BOX 100  
OSAGE, WEST VIRGINIA 26543 OSAGE, WEST VIRGINIA 26543

JUL 21 2000

MARS 0250P

LATITUDE 40 00 00

LONGITUDE 80 00 30



COAL OWNED BY Storage

NEW LOCATION.....

DRILL DEEPER.....

ABANDONMENT.....

COMPANY The Manufacturers Light & Heat Co.

ADDRESS 800 Union Trust Bldg. Pgh. Pa.

FARM Elmer Fisher

TRACT \_\_\_\_\_ ACRES 46 LEASE No. 21021

WELL (FARM) No. 1 SERIAL No. 4184

ELEVATION (SPIRIT LEVEL) 1153'

QUADRANGLE Cameron

COUNTY Marshall DISTRICT Sandhill

ENGINEER A. J. Treaton J.M.

ENGINEER'S REGISTRATION No. 9442

FILE No. \_\_\_\_\_ DRAWING No. V-13-896

DATE Sept. 1, 1953 SCALE 1" = 400'

STATE OF WEST VIRGINIA  
DEPARTMENT OF MINES  
OIL AND GAS DIVISION  
CHARLESTON

WELL LOCATION MAP

FILE No. MARS-250

+ DENOTES LOCATION OF WELL ON UNITED STATES TOPOGRAPHIC MAPS. SCALE 1 TO 62,500. LATITUDE AND LONGITUDE LINES BEING REPRESENTED BY BORDER LINES AS SHOWN.

— DENOTES ONE INCH SPACES ON BORDER LINE OF ORIGINAL TRACING.

9-10 22 Record for storage

STATE OF WEST VIRGINIA  
DEPARTMENT OF MINES  
OIL AND GAS DIVISION

*Cameron*

**WELL RECORD**

Permit No. MARS-250

Oil or Gas Well GAS  
(KIND)

Company THE MANUFACTURERS LIGHT AND HEAT COMPANY  
Address 800 Union Trust Bldg., Pgh., Penna.  
Farm Elmer Fisher Acres 46  
Location (waters) \_\_\_\_\_  
Well No. 1-4184 Elev. 1153'  
District Sandhill County Marshall  
The surface of tract is owned in fee by \_\_\_\_\_  
Address \_\_\_\_\_  
Mineral rights are owned by \_\_\_\_\_  
Address \_\_\_\_\_  
Drilling commenced October 16, 1951  
Drilling completed April 7, 1953  
Date Shot \_\_\_\_\_ From \_\_\_\_\_ To \_\_\_\_\_  
With \_\_\_\_\_  
Open Flow \_\_\_\_\_ /10ths Water in \_\_\_\_\_ Inch  
42 /10ths Merc. in 3" Inch  
Volume 1,691,462 Cu. Ft.  
Rock Pressure 510 lbs. 24 hrs.  
Oil \_\_\_\_\_ bbls., 1st 24 hrs.  
Fresh water \_\_\_\_\_ feet  
Salt water \_\_\_\_\_ feet

Casing and Tubing	Used in Drilling	Left in Well	Packers
Size			
16			Kind of Packer
13			
10			Size of
8 1/4			
6 3/4			Depth set
5 3/16			
3			Perf. top
2			Perf. bottom
Liners Used			Perf. top
			Perf. bottom

CASING CEMENTED \_\_\_\_\_ SIZE \_\_\_\_\_ No. Ft. \_\_\_\_\_ Date \_\_\_\_\_  
COAL WAS ENCOUNTERED AT 706 FEET \_\_\_\_\_ INCHES  
\_\_\_\_\_ FEET \_\_\_\_\_ INCHES \_\_\_\_\_ FEET \_\_\_\_\_ INCHES  
\_\_\_\_\_ FEET \_\_\_\_\_ INCHES \_\_\_\_\_ FEET \_\_\_\_\_ INCHES

Formation	Color	Hard or Soft	Top	Bottom	Oil, Gas or Water	Depth Found	Remarks
✓ Pittsburgh Coal			706	712	Run 71' of 10" Casing and screwed on old 10" in hole. Cemented 10" in with 153 bag cement. Old hole was cleaned out to depth of 937' and then bypassed old hold and started drilling at 937'. Cemented in 8" Casing with 224 bags cement.		
Lime			937	960			
Slate & Shells			960	1005			
✓ Little Dunkard Sand			1065	1085			
Break			1085	1087			
Sand			1087	1094			
Slate & Shells			1094	1125			
✓ Big Dunkard Sand			1125	1171			
Slate			1171	1176			
Lime			1176	1197			
Slate & Shells			1197	1242			
Lime			1242	1250			
Sand			1250	1300			
Slate & Shells			1300	1385			
✓ Salt Sand Gas well			1385	1396		Cemented in 5 1/2" Casing with 250 bag cement.	
Gas			1392	1396		42/10 mercury in 3" - 1,691,462 cu. ft.	
Total Depth				1398			

257

THIS WAS A PLUGGED WELL, KNOWN AS WELL #F-28988.  
CLEANED OUT AND RECONDITIONED INTO STORAGE WELL APRIL, 1953 AS TO ABOVE RECORD.

