

80° 37' 30"

LONGITUDE 80 ° 35'

COAL OWNED BY \_\_\_\_\_  
 RECONDITION \_\_\_\_\_  
 NEW LOCATION.....   
 DRILL DEEPER.....   
 ABANDONMENT.....  *issued 2-17-71*

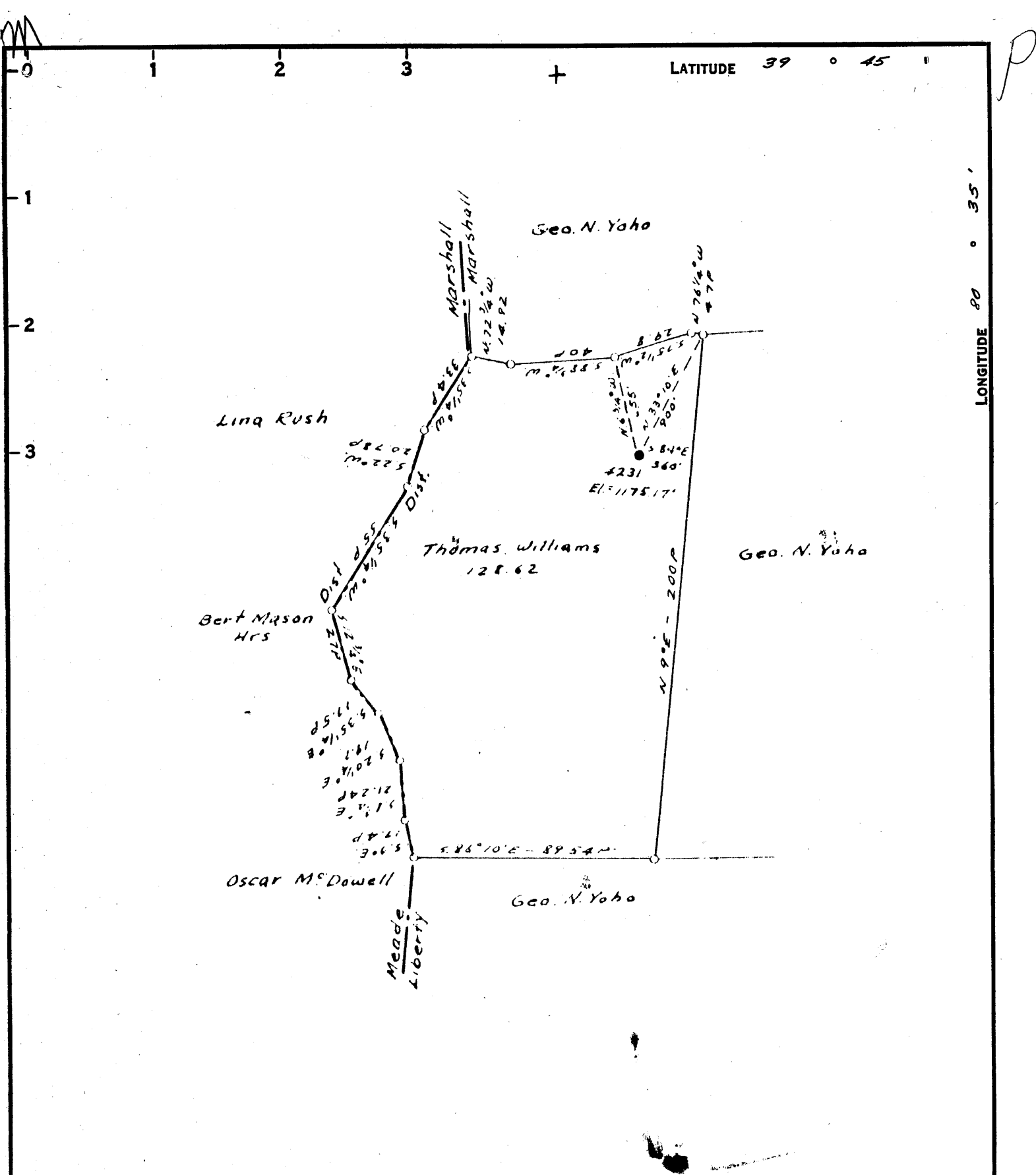
P-25-9

COMPANY THE MANUFACTURERS LIGHT & HEAT  
 ADDRESS 800 UNION TRUST BLDG., PGH. PA.  
 FARM THOMAS WILLIAMS  
 TRACT \_\_\_\_\_ ACRES 128.62 LEASE No. 27416  
 WELL (FARM) No. 1 SERIAL No. 1231  
 ELEVATION (SPIRIT LEVEL) 1175.17'  
 QUADRANGLE LITTLETON NC  
 COUNTY MARSHALL DISTRICT LIBERTY  
 ENGINEER Thomas E. Virgin M.  
 ENGINEER'S REGISTRATION No. 1503  
 FILE No. \_\_\_\_\_ DRAWING No. Y-25-265  
 DATE 11 JAN. 61 SCALE 1" = 800'

STATE OF WEST VIRGINIA  
 DEPARTMENT OF MINES  
 OIL AND GAS DIVISION  
 CHARLESTON

WELL LOCATION MAP  
 FILE No. MARS-266-Renewed-P

+ DENOTES LOCATION OF WELL ON UNITED STATES TOPOGRAPHIC MAPS. SCALE 1 TO 62,500. LATITUDE AND LONGITUDE LINES BEING REPRESENTED BY BORDER LINES AS SHOWN.  
 - DENOTES ONE INCH SPACES ON BORDER LINE OF ORIGINAL TRACING.



COAL OWNED BY \_\_\_\_\_  
 RECONDITION \_\_\_\_\_  
 NEW LOCATION...   
 DRILL DEEPER...   
 ABANDONMENT...

P-25-3

COMPANY THE MANUFACTURERS LIGHT & HEAT  
 ADDRESS 800 UNION TRUST BLDG., PGH. PA.  
 FARM THOMAS WILLIAMS  
 TRACT \_\_\_\_\_ ACRES 128.62 LEASE NO. 27446  
 WELL (FARM) NO. 1 SERIAL NO. 4231  
 ELEVATION (SPIRIT LEVEL) 1175.17'  
 QUADRANGLE LITTLETON NC  
 COUNTY MARSHALL DISTRICT LIBERTY  
 ENGINEER Thomas E. Virgin M.  
 ENGINEER'S REGISTRATION NO. 1503  
 FILE NO. \_\_\_\_\_ DRAWING NO. Y-25-265  
 DATE 11 JAN. 61 SCALE 1" = 800'

STATE OF WEST VIRGINIA  
 DEPARTMENT OF MINES  
 OIL AND GAS DIVISION  
 CHARLESTON

WELL LOCATION MAP

FILE NO. MARS-266-Renewed

+ DENOTES LOCATION OF WELL ON UNITED STATES TOPOGRAPHIC MAPS. SCALE 1 TO 62,500. LATITUDE AND LONGITUDE LINES BEING REPRESENTED BY BORDER LINES AS SHOWN.  
 - DENOTES ONE INCH SPACES ON BORDER LINE OF ORIGINAL TRACING.



STATE OF WEST VIRGINIA  
DEPARTMENT OF MINES  
OIL AND GAS DIVISION

*Storage*

Quadrangle LITTLETON

Permit No. MARS-266-R

**WELL RECORD**

Oil or Gas Well GAS  
(KIND)

Company The Mfrs. Lt. and Ht. Co.  
Address 800 Union Trust Bldg., Pittsburgh 19, Pa.  
Farm Thomas Williams Acres 128  
Location (waters) \_\_\_\_\_  
Well No. L-4231 Elev. 1175.17'  
District Liberty County Marshall  
The surface of tract is owned in fee by \_\_\_\_\_  
Address \_\_\_\_\_  
Mineral rights are owned by \_\_\_\_\_  
Address \_\_\_\_\_  
Drilling commenced March 30, 1961  
Drilling completed May 17, 1961  
Date Shot 5/18/61 From 1932' To 1975'  
With Orifice Well Tester

Casing and Tubing	Used in Drilling	Left in Well	Packers
Size			Kind of Packer
16			
18			
10 3/4"	959'	959'	Size of
8 5/8"	1062'	1386'	
7"	1308'	1885'	Depth set
5 3/16"			
4 1/2"	2000'	2000'	Perf. top
2			Perf. bottom
Liners Used			Perf. top
			Perf. bottom

Open Flow 0 /10ths Water in 1/4 Inch  
/10ths Merc. in \_\_\_\_\_ Inch  
Volume None Cu. Ft.  
Rock Pressure None lbs. 96 hrs.  
Oil \_\_\_\_\_ bbls., 1st 24 hrs.  
Fresh water \_\_\_\_\_ feet  
Salt water \_\_\_\_\_ feet

CASING CEMENTED \_\_\_\_\_ SIZE \_\_\_\_\_ No. Ft. \_\_\_\_\_ Date \_\_\_\_\_  
COAL WAS ENCOUNTERED AT 940 FEET \_\_\_\_\_ INCHES  
\_\_\_\_\_ FEET \_\_\_\_\_ INCHES FEET \_\_\_\_\_ INCHES  
\_\_\_\_\_ FEET \_\_\_\_\_ INCHES FEET \_\_\_\_\_ INCHES

Formation	Color	Hard or Soft	Top	Bottom	Oil, Gas or Water	Depth Found	Remarks
		THICKNESS					
✓ Pittsburgh Coal		8	940	948			
✓ Big Dunkard		34	1420	1454			
✓ Maxton Sand		43	1932	1975			
7" Casing		Surface	1885	1885			
Total Depth				2002			
Set 4 1/2" Tubing				2002			
Perforate 4 1/2" Tubing		43	1932	1975			
					Run 1062' of New 8 5/8" Casing on a Steel Die Nipple and Connected it to 324' of Original 8" left in hole. Run 1308' of new 7" Casing on a steel Die Nipple and connected it to 577' of original 7" left in hole.		
					Run 4 1/2" Tubing to bottom and perforated it through the Maxton Sand.		