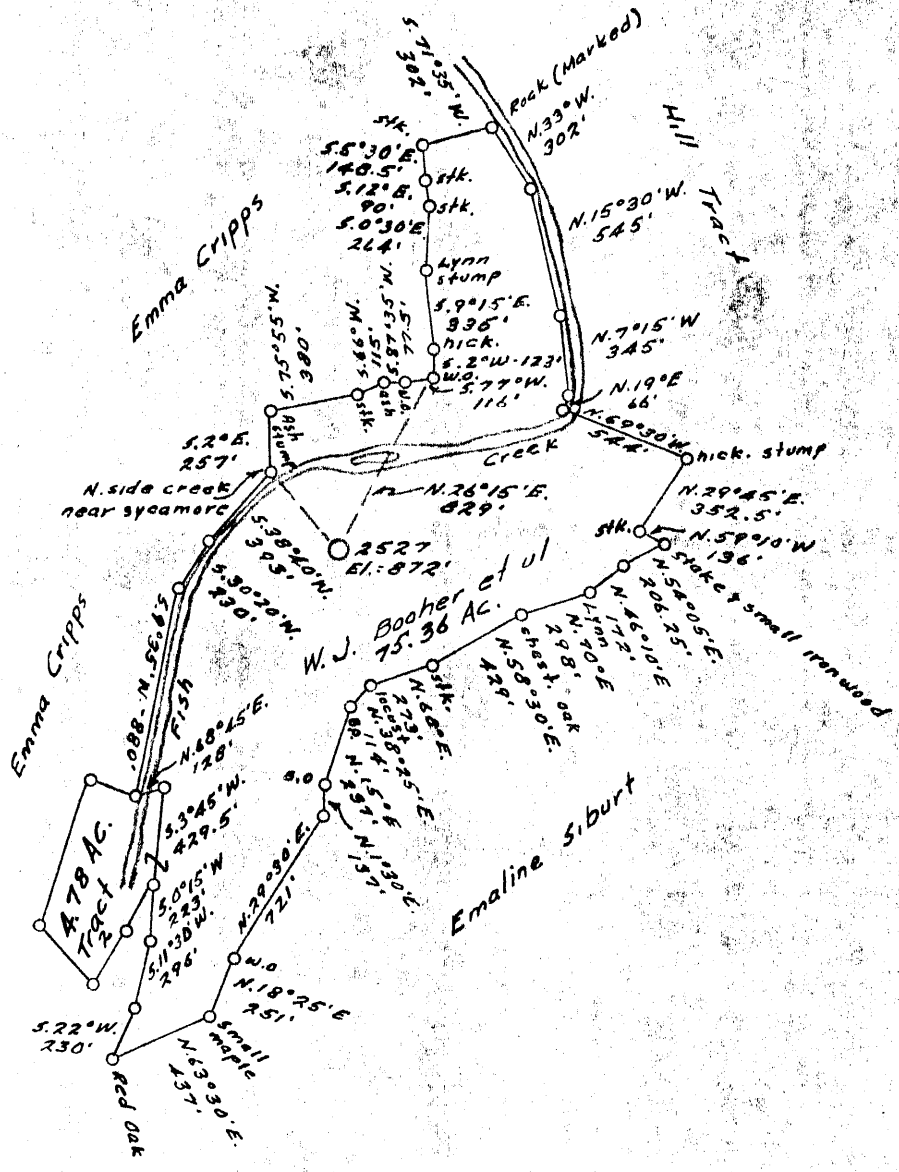
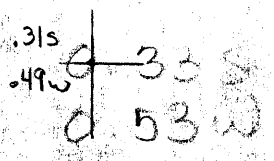


Latitude 39° 45'

Longitude 80° 35'



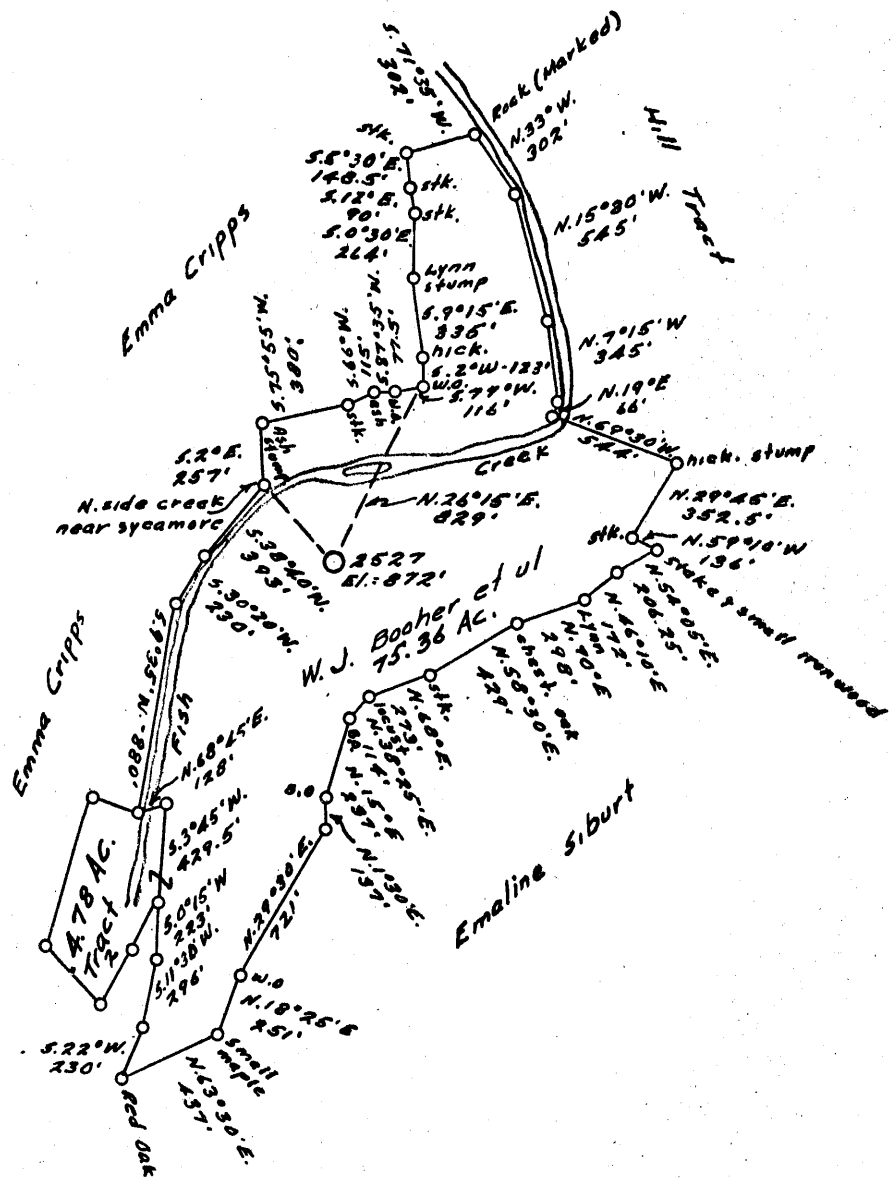
COAL OWNED BY Consolidation Coal Co.
 NEW LOCATION
 DRILL DEEPER
 ABANDONMENT issued 9-11-70

COMPANY The Manufacturers Light Heat
 ADDRESS 800 Union Trust Bldg. Pgh. Pa
 FARM W. J. Booher et al
 TRACT _____ ACRES 00.14 LEASE No 27697
 WELL (FARM) NO. 1 SERIAL No 2527
 ELEVATION (SURFACE LEVEL) 872'
 QUADRANGLE Littleton NC
 COUNTY Marshall DISTRICT Liberty
 ENGINEER Thomas E. Virgin - J.M.
 ENGINEER'S REGISTRATION NO. 1503
 FILE No. _____ DRAWING No. Y-16-163
 DATE 21 Dec. 1964 SCALE 1" = 800'

STATE OF WEST VIRGINIA
 DEPARTMENT OF MINES
 OIL AND GAS DIVISION
 CHARLESTON
 WELL LOCATION MAP
 MARS-274-P

Latitude 39° 45'

LONGITUDE 80° 35'



COAL OWNED BY Reopen

NEW LOCATION

DRILL DEEPER

ABANDONMENT

COMPANY The Manufacturers Light & Heat

ADDRESS 800 Union Trust Bldg. Pgh. Pa

FARM W. J. Bocher et al

TRACT _____ ACRES 00.14 LEASE NO. 37697

WELL (FARM) NO. 1 SERIAL NO. 2527

ELEVATION (SPIRIT LEVEL) 872'

QUADRANGLE Littleton

COUNTY Marshall DISTRICT Liberty

ENGINEER Thomas E. Virgin - S.M.

ENGINEER'S REGISTRATION NO. 1503

FILE NO. _____ DRAWING NO. V-16-163

DATE 21 Dec. 1954 SCALE 1"=800'

STATE OF WEST VIRGINIA
DEPARTMENT OF MINES
OIL AND GAS DIVISION
CHARLESTON

WELL LOCATION MAP

FILE NO. MARS-274

+ DENOTES LOCATION OF WELL ON UNITED STATES TOPOGRAPHIC MAPS, SCALE 1 TO 62,500. LATITUDE AND LONGITUDE LINES BEING REPRESENTED BY BORDER LINES AS SHOWN.

- DENOTES ONE INCH SPACING OF BORDER LINE OF ORIGINAL TRACING.



STATE OF WEST VIRGINIA
DEPARTMENT OF MINES
OIL AND GAS DIVISION

Quadrangle Litchton

WELL RECORD

Permit No. MARS-274-R

Oil or Gas Well Gas
(KIND)

Company THE MANUFACTURERS LIGHT AND HEAT COMPANY

Address 800 UNION TRUST BUILDING, PGH., PA.

Farm W. J. Booher Acres 80

Location (waters) _____

Well No. 2527 Elev. 872'

District Liberty County Marshall

The surface of tract is owned in fee by _____
Address _____

Mineral rights are owned by _____
Address _____

Drilling commenced Feb. 15, 1955

Drilling completed April 29, 1955

Date Shot _____ From _____ To _____

With _____

Open Flow /10ths Water in _____ Inch

/10ths Merc. in _____ Inch

Volume _____ Cu. Ft.

Rock Pressure _____ lbs. _____ hrs.

Oil _____ bbls., 1st 24 hrs.

Fresh water _____ feet

Salt water _____ feet

Casing and Tubing	Used in Drilling	Left in Well	Packers
Size			
16			Kind of Packer <u>Spang Anchor</u>
13			
10		160'	Size of <u>4" x 6 5/8"</u>
8 1/4		1201'	
7"		1767'	Depth set <u>1746'</u>
4"		2070'	
3			Perf. top _____
2			Perf. bottom _____
Liners Used			Perf. top _____
			Perf. bottom _____

CASING CEMENTED _____ SIZE _____ No. Ft. _____ Date _____

COAL WAS ENCOUNTERED AT 285 FEET _____ INCHES
354 FEET _____ INCHES 550 FEET _____ INCHES
655 FEET _____ INCHES _____ FEET _____ INCHES

Formation	Color	Hard or Soft	Top	Bottom	Oil, Gas or Water	Depth Found	Remarks
Coal			285	288	Run 160' of 10 3/4" casing, SM, H 40, 32# on Steel Shoe, Not Cemented. Run 1201' of 8 5/8" casing, SM. J55, 24# on Steel shoe set at 1192'. Run 1767' of 7" casing, SM. J55, 20# on Steel Shoe set at 1754'. Cemented between 8 5/8" and 10 3/4" with 400 bags cement. Water return but no cement. Cemented between 7" and 8 5/8" with 250 bags cement. Good return to surface. Run 2070' of 4 1/2 inch tubing, SM. GR. J. 12.60#. A 4" x 6 5/8" Spang Anchor Packer set at 1746'. Used two bags of Aquagel between the 8" and 10" casing and six bags between the 7" and 8" casing.		
Native Coal			354	360			
Mapletown Coal			550	556			
Pittsburgh Coal			655	664			
Maxton Sand			1708	1738			
Big Injun Sand			1786	2070			
TOTAL DEPTH:				2053			
				(375)			

2053
1626
397

1786
872
914

