

LATITUDE 39° 45'

LONGITUDE 80° 35'

1.95 S  
2.05 W ✓

COAL OWNED BY Chicago  
 NEW LOCATION   
 DRILL DEEPER   
 ABANDONMENT  - 9-22-71

COMPANY Columbia Gas Trans., Corp  
~~THE MANUFACTURERS LIGHT & HEAT CO.~~  
 ADDRESS 800 UNION TRUST BLDG. PGH. PA., 15219  
 FARM T.O. JOHNSON  
 TRACT \_\_\_\_\_ ACRES 120 LEASE NO. C-1143  
 WELL (FARM) NO. 2 SERIAL NO. F-3172 *Now L: 44321*  
 ELEVATION (SPIRIT-LEVEL) 1363'  
 QUADRANGLE LITTLETON NC  
 COUNTY MARSHALL DISTRICT LIBERTY  
 ENGINEER Thomas E. Virgin  
 ENGINEER'S REGISTRATION NO. 1503  
 FILE NO. \_\_\_\_\_ DRAWING NO. Y-15-137  
 DATE 9/17/54 SCALE 1" = 660'

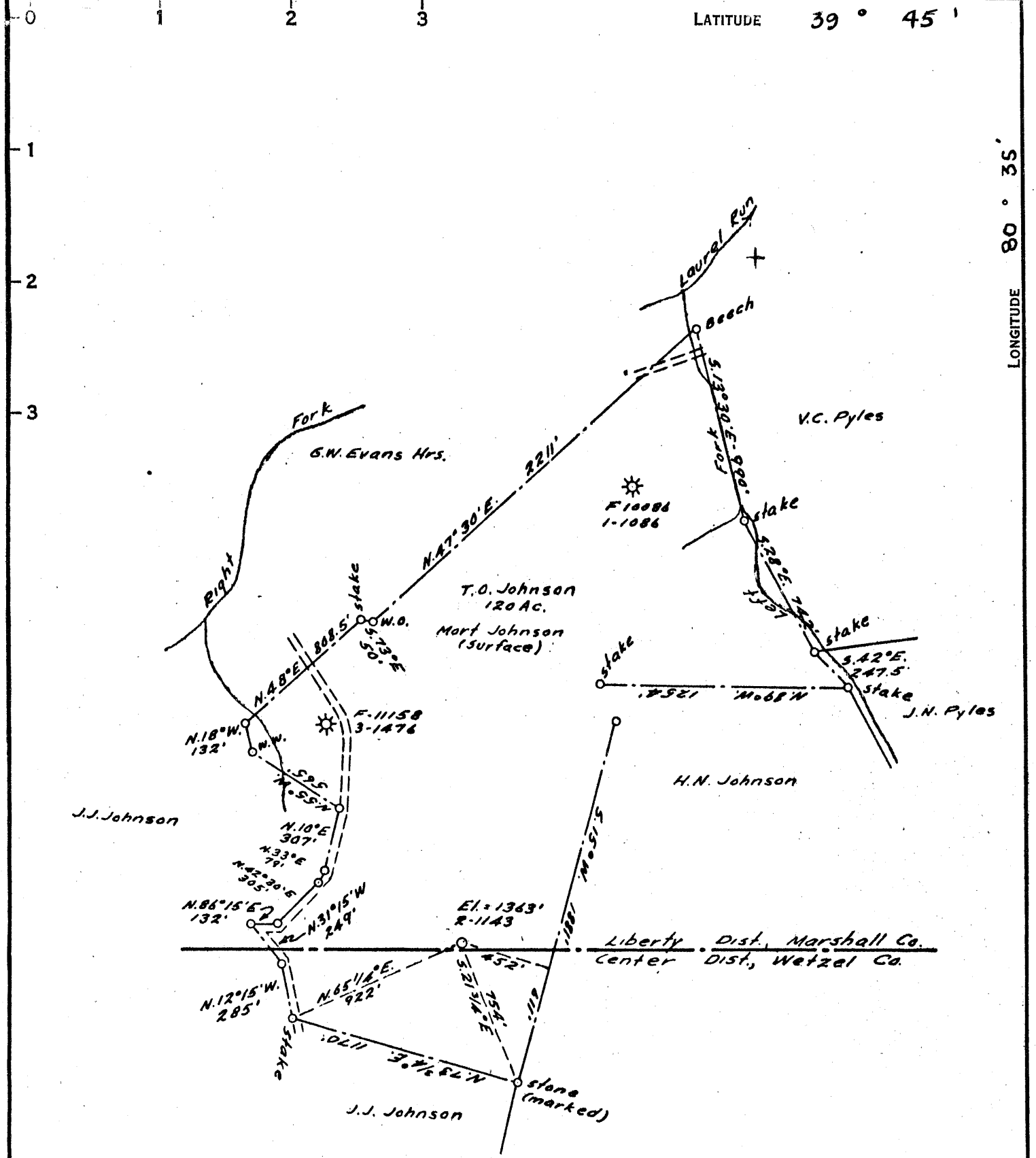
STATE OF WEST VIRGINIA  
 DEPARTMENT OF MINES  
 OIL AND GAS DIVISION  
 CHARLESTON

WELL LOCATION MAP

FILE NO. MARS-276-P

+ DENOTES LOCATION OF WELL ON UNITED STATES TOPOGRAPHIC MAPS, SCALE 1 TO 62,500, LATITUDE AND LONGITUDE LINES BEING REPRESENTED BY BORDER LINES AS SHOWN.

- DENOTES ONE INCH SPACES ON BORDER LINE OF ORIGINAL TRACING.



COAL OWNED BY \_\_\_\_\_  
*Storage*

NEW LOCATION.....

DRILL DEEPER.....

ABANDONMENT.....

COMPANY THE MANUFACTURERS LIGHT & HEAT CO.

ADDRESS 800 UNION TRUST BLDG. PGH. PA.

FARM T.O. JOHNSON

TRACT \_\_\_\_\_ ACRES 120 LEASE No. \_\_\_\_\_

WELL (FARM) No. 2 SERIAL No. F-31752

ELEVATION (SPIRIT-LEVEL) 1363'

QUADRANGLE LITTLETON

COUNTY MARSHALL DISTRICT LIBERTY

ENGINEER Thomas E. Virgin

ENGINEER'S REGISTRATION No. 1503

FILE No. \_\_\_\_\_ DRAWING No. Y-15-137

DATE 9 NOV. 54 SCALE 1" = 660'

STATE OF WEST VIRGINIA  
 DEPARTMENT OF MINES  
 OIL AND GAS DIVISION  
 CHARLESTON

**WELL LOCATION MAP**

FILE No. MARS-276

+ DENOTES LOCATION OF WELL ON UNITED STATES TOPOGRAPHIC MAPS, SCALE 1 TO 62,500. LATITUDE AND LONGITUDE LINES BEING REPRESENTED BY BORDER LINES AS SHOWN.

— DENOTES ONE INCH SPACES ON BORDER LINE OF ORIGINAL TRACING.

LATITUDE 39° 45'

LONGITUDE 80° 35'



STATE OF WEST VIRGINIA  
DEPARTMENT OF MINES  
OIL AND GAS DIVISION

Quadrangle Littleton

WELL RECORD

*Storage*

Permit No. MARS-276

Oil or Gas Well Gas

(KIND)

Company THE MANUFACTURERS LIGHT AND HEAT COMPANY

Address 800 UNION TRUST BLDG., PGH., PA.

Farm T. O. Johnson Acres 120

Location (waters)

Well No. 4432 (F-31752) Elev. 1363'

District Liberty County Marshall

The surface of tract is owned in fee by

Address

Mineral rights are owned by

Address

Drilling commenced Feb. 25, 1955

Drilling completed Nov. 1, 1956

Date Shot From To

With

Open Flow 90/10ths Water in 5/8 Inch

     /10ths Merc. in      Inch

Volume 20,052 Cu. Ft.

Rock Pressure 325 lbs. 84 hrs.

Oil      bbls., 1st 24 hrs.

Fresh water      feet      feet

Salt water      feet      feet

Casing and Tubing	Used in Drilling	Left in Well	Packers
Size			Kind of Packer
16			
13	571'	571'	
10		1350'	Size of
8 3/4" 7"		2251'	
6 5/8"			Depth set
5 3/16"			
3			Perf. top
2			Perf. bottom
Liners Used			Perf. top
			Perf. bottom

CASING CEMENTED      SIZE      No. Ft.      Date     

COAL WAS ENCOUNTERED AT 1122 FEET      INCHES

     FEET      INCHES      FEET      INCHES

     FEET      INCHES      FEET      INCHES

Formation	Color	Hard or Soft	Top	Bottom	Oil, Gas or Water	Depth Found	Remarks
✓ Pittsburgh Coal			1122	1130			
Lime			2230				
✓ Big Injun Sand				2534			
Total Depth				2510			
		1363	2230	375			
		1122	1363				
			867				
					Reamed 18" hole from surface to 566'. Run 571' of 13 3/8" csg., SM. Gr.H, 48#, on a 13" x 16" swage nipple set at 566'. Not cemented. Reamed 13" hole to 1230'. Open hole below permitted 10 3/4" csg. to follow. Run 1350' of 10 3/3" csg., SM. H40, 32#, on a steel shoe set at 1338'. Run 400 bags of cement and 10 bags of aquagel. Good return of cement at surface. Run 2251' of 7" csg., SM. J55, 20#. on a steel shoe set at 2235'. Run 400 bags cement and 20 bags Aquagel. No cement return at surface. Injun sand was washed down with 50 gallons of Mud Acid.		
					30 - bags cement to fill between 7" & 10" csg., lead plug at 2520', run 10' of cement on top of lead plug.		
					Completed total depth 2510'		
					Reconditioned for storage on Work Order No. 1253-L-785-4		
						2230	
						1363	
						867	

