

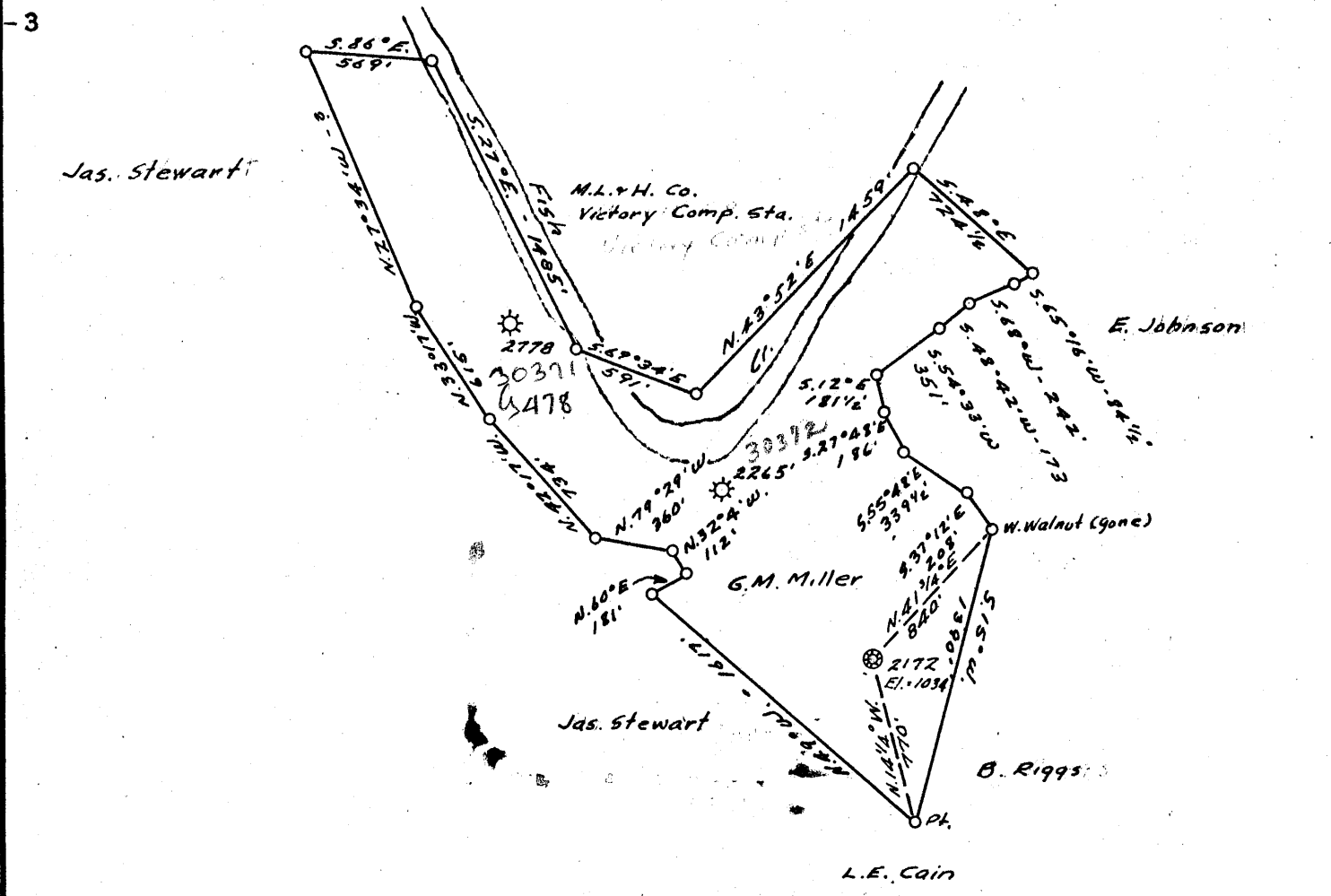
2M

LATITUDE 39° 45'

.025
1.46w

0.15 S
1.40 W ✓

LONGITUDE 80° 35'



COAL OWNED BY _____
 Recondition ✓
 NEW LOCATION...
 DRILL DEEPER...
 ABANDONMENT...

COMPANY The Manufacturer Light & Heat Co
 ADDRESS 800 Union Trust Bldg. Pgh. Pa.
 FARM G.M. Miller
 TRACT _____ ACRES 90 LEASE No. 22 98
 WELL (FARM) No. 1 SERIAL No. 2172
 ELEVATION (SPIRIT LEVEL) 1034'
 QUADRANGLE Littleton
 COUNTY Marshall DISTRICT Liberty
 ENGINEER Thomas E. Virgin J.M.
 ENGINEER'S REGISTRATION No. 1503
 FILE No. _____ DRAWING No. Y-15-19A
 DATE 20 March 55 SCALE 1" = 800'

STATE OF WEST VIRGINIA
 DEPARTMENT OF MINES
 OIL AND GAS DIVISION
 CHARLESTON

WELL LOCATION MAP

FILE No. MARS-277-Redrill

+ DENOTES LOCATION OF WELL ON UNITED STATES TOPOGRAPHIC MAPS, SCALE 1 TO 62,500. LATITUDE AND LONGITUDE LINES BEING REPRESENTED BY BORDER LINES AS SHOWN.
 - DENOTES ONE INCH SPACES ON BORDER LINE OF ORIGINAL TRACING.

STATE OF WEST VIRGINIA
DEPARTMENT OF MINES
OIL AND GAS DIVISION

Quadrangle Littleton

WELL RECORD

Permit No. MARS-277-R

Oil or Gas Well Star
(KIND)

Company THE MANUFACTURERS LIGHT AND HEAT CO.
Address 800 UNION TRUST BLDG., PGH., PENNA.
Farm Geo. N. Miller Acres 90
Location (waters) _____
Well No. 2172 Elev. 1034'
District Liberty County Marshall
The surface of tract is owned in fee by _____
Address _____
Mineral rights are owned by _____
Address _____
Drilling commenced April 11, 1955
Drilling completed July 29, 1955
Date Shot _____ From _____ To _____
With _____
Open Flow /10ths Water in _____ Inch
/10ths Merc. in _____ Inch
Volume No gas to test Cu. Ft. _____
Rock Pressure _____ lbs. _____ hrs.
Oil _____ bbls., 1st 24 hrs.
Fresh water _____ feet _____ feet
Salt water _____ feet _____ feet

Casing and Tubing	Used in Drilling	Left in Well	Packers
Size			Kind of Packer
16			
13			
10		279	Size of
8 1/4		1183	
7		1704	Depth set
5 3/16			
3			Perf. top
2			Perf. bottom
Liners Used			Perf. top
			Perf. bottom

CASING CEMENTED _____ SIZE _____ No. Ft. _____ Date _____

COAL WAS ENCOUNTERED AT 615 FEET _____ INCHES
698 FEET _____ INCHES FEET _____ INCHES
FEET _____ INCHES FEET _____ INCHES

Formation	Color	Hard or Soft	Top	Bottom	Oil, Gas or Water	Depth Found	Remarks
Mapletown Coal			615	620	Run 279' of 10-3/4" casing, SM.Gr.H. 32.75# on steel shoe set at 277'. Cemented with 150 bags cement. No return at surface. Run 1183' of 8-5/8" casing SM. J55 24# on a steel shoe set at 1167'. Cemented with 300 bags cement and 1 bag aquagel. No return of cement at surface. Perforated the 8-5/8" casing at 756' and pumped 250 bags cement and 1 bag aquagel. Good return of cement at surface. Run 1704' of 7" casing, SM J55 20# on a steel shoe set at 1679'. Cemented with 250 bags cement and 1 bag aquagel. Good return of cement at surface.		
Pittsburgh Coal			698	704			
Maxon Sand			1679	1722			
Total Depth			1725	325			

