

39°47'30"

Latitude

80°37'30"

Longitude

2.705
14w

Topo Location

7.5' Loc. _____ 15' Loc. _____
[calc.] _____

Company Manufact Lt & HT

Farm J & MA Blake #2270

15' Quad _____
(sec.)

7.5' Quad Glen Easton

District Liberty

WELL LOCATION PLAT

County 051 Permit 30020
vow

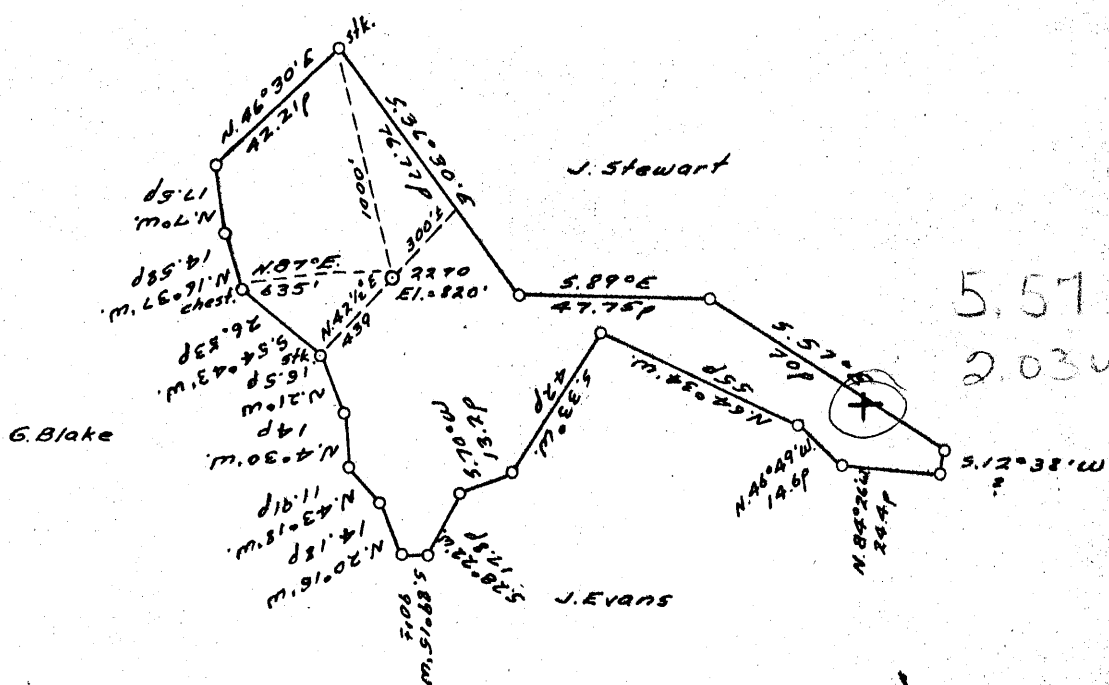
283

LATITUDE

39° 50' 30"

LONGITUDE

80° 37' 30"



2.70S
-13W

COAL OWNED BY _____
Storage

NEW LOCATION...

DRILL DEEPER...

ABANDONMENT...

COMPANY The Manufacturers Light, Heat

ADDRESS 800 Union Trust Bldg. Pgh. Pa.

FARM E. R. Hinerman et al.

TRACT _____ ACRES 44 LEASE NO. 27664

WELL (FARM) NO. 1 SERIAL NO. 2270

ELEVATION (SPIRIT LEVEL) 820'

QUADRANGLE Cameron — SE

COUNTY Marshall DISTRICT Liberty

ENGINEER Robert M. Heill

ENGINEER'S REGISTRATION NO. 361-E

FILE NO. _____ DRAWING NO. V-13-951

DATE 26 Apr 55 SCALE 1" = 800'

STATE OF WEST VIRGINIA
DEPARTMENT OF MINES
OIL AND GAS DIVISION
CHARLESTON

WELL LOCATION MAP

FILE NO. MARS-283-REDRILL
Storage

+ DENOTES LOCATION OF WELL ON UNITED STATES TOPOGRAPHIC MAPS, SCALE 1 TO 62,500. LATITUDE AND LONGITUDE LINES BEING REPRESENTED BY BORDER LINES AS SHOWN.

— DENOTES ONE INCH SPACES ON BORDER LINE OF ORIGINAL TRACING.



STATE OF WEST VIRGINIA
DEPARTMENT OF MINES
OIL AND GAS DIVISION

Quadrangle Camwell

WELL RECORD

Storage

Permit No. MARS-283-R

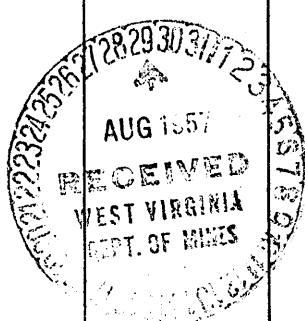
Oil or Gas Well Gas
(KIND)

Company THE MANUFACTURERS LIGHT AND HEAT COMPANY
Address 800 Union Trust Building, Pittsburgh, Pa.
Farm Eleanor R. Hinerman Acres 44
Location (waters) _____
Well No. _____ Well No. 2270 Elev. 330
District Liberty County Marshall
The surface of tract is owned in fee by _____
Address _____
Mineral rights are owned by _____
Address _____
Drilling commenced February 23, 1957
Drilling completed August 7, 1957
Date Shot _____ From _____ To _____
With _____
Open Flow _____ /10ths Water in _____ Inch
_____ /10ths Merc. in _____ Inch
Volume _____ Cu. Ft.
Rock Pressure _____ lbs. _____ hrs.
Oil _____ bbls., 1st 24 hrs.
Fresh water _____ feet _____ feet
Salt water _____ feet _____ feet

Casing and Tubing	Used in Drilling	Left in Well	Packers
Size			
16			Kind of Packer _____
13			
10		229	Size of _____
8 3/4		1047	
7 1/8	7"	1560	Depth set _____
5 3/16			
3			Perf. top _____
2			Perf. bottom _____
Liners Used			Perf. top _____
			Perf. bottom _____

CASING CEMENTED _____ SIZE _____ No. Ft. _____ Date _____
COAL WAS ENCOUNTERED AT _____ FEET _____ INCHES
_____ FEET _____ INCHES FEET _____ INCHES
_____ FEET _____ INCHES FEET _____ INCHES

Formation	Color	Hard or Soft	Top	Bottom	Oil, Gas or Water	Depth Found	Remarks
Schlumberger Well Survey		Thickness					
✓ Pittsburgh Coal		7	530	537	All pipe measured over threads Run 229' of 10 3/4" Casing, SM. Gr H. 32# on a Steel Shoe. Cemented with 125 bags cement. Good return at surface. Run 573' of 8 5/8" Casing, SM. Gr J. 24# on a steel shoe. Set it on top of 474' of original 8 1/4" Casing. Cemented with 200 bags cement and 2 bags Aquagel. Good cement return at the surface. Run 156' of 7" Casing, SM. Gr H. 20# and 1404' of 7" Casing, SM. Gr J. 20# on a steel shoe set at 1548'. Cemented with 215 bags of cement and 2 bags of Aquagel Return of Aquagel but no cement at sur- face. Bridged hole at 2136' and filled solid with cement to 1570'. Washed sand down with 50 gal. of Mud Acid. No. gas to test.		
✓ Maxton Sand		48	1522	1570			
Total Depth				1570			
7" Shoe Set at				1548			
Reconditioned on Work Order No. 1751-L-1149-4							



Liberty District, Marshall County, W. Va.
 Manufacturers Light & Heat Co., 800 Union Tr. Bldg., Pittsburgh, Pa.
 On 50 acres, surface owned by J. & M. A. Blake Heirs, Cameron, W. Va.,
 and mineral rights by ML&H Co., Pittsburgh, Pa.

Drilled prior to June 1, 1930 (1929?)

Elevation, 820'.

15' conductor; 10" casing, 231'; 8" casing, 1042'; 6-5/8" casing, 1631'.

Coal was encountered at 230-232, 432-428, and 527-532'.

Abandonment reported to Dept. of Mines Nov. 24, 1931.

MARS-20-A

	Top.	Bottom.	
Gravel	0	16	(15?)
Lime	15	55	
Slate	55	100	
Lime	100	120	
Sand	120	125	
Slate	125	175	
Lime	175	185	
Sand	185	230	
Coal	230	232	100
Slate	232	250	
Lime	250	275	
Slate	275	300	
Lime	300	320	
Slate	320	330	
Lime and slate	330	432	
Coal	432	438	100
Lime and slate	438	527	
Pittsburgh Coal (2 bailers water)	527	532	100
Slate and lime	532	880	
Sand	880	915	
Slate	915	1042	
Sand	1042	1067	
Slate and shells	1067	1195	
Sand (gas)	1195	1220	
Slate	1220	1225	
Sand	1225	1245	
Slate and shells	1245	1430	
Sand (water, 5 bailers per hour)	1430	1460	W
Slate and shells	1460	1526	
Sand (gas at 1556')	1526	1576	
Slate and shells	1576	1631	
Big Lime	1631	1700	
Big Injun Sand	1700	1936	
Slate and shells	1936	2085	
Sand	2085	2105	
Slate and shells	2105	2526	
Gordon Sand (gas at 2526')	2526	2541	
(oil at 2526-2636')			
Slate	2541	2586	
Sand	2586	2591	
Slate and shells, to bottom	2591	2746	