

COAL OWNED BY Denver Fuel Company
% Atty A.D. Williams Uniontown Pa.

NEW LOCATION.....

DRILL DEEPER.....

ABANDONMENT..... ORIGINALLY ABANDONED - MARS-289-A

- 9-22-91

Columbia Gas Transp. Corp.
 COMPANY The Manufacturers Light & Heat Co
 ADDRESS 800 Union Trust Bldg. Pittsburgh Pa., 15219
 FARM G. W. Grandon ~~Now B.C. Corporation~~
 TRACT 20 ACRES 15 LEASE No. 7948
 WELL (FARM) No. 1 SERIAL No. 2594
 ELEVATION (SPIRIT LEVEL) 995'
 QUADRANGLE Cameron
 COUNTY Marshall DISTRICT Liberty
 ENGINEER Thomas Virgin Bolesocher
 ENGINEER'S REGISTRATION No. _____
 FILE No. _____ DRAWING No. Y-13-161
 DATE Feb 3 1949 SCALE 1" = 400'

STATE OF WEST VIRGINIA
 DEPARTMENT OF MINES
 OIL AND GAS DIVISION
 CHARLESTON

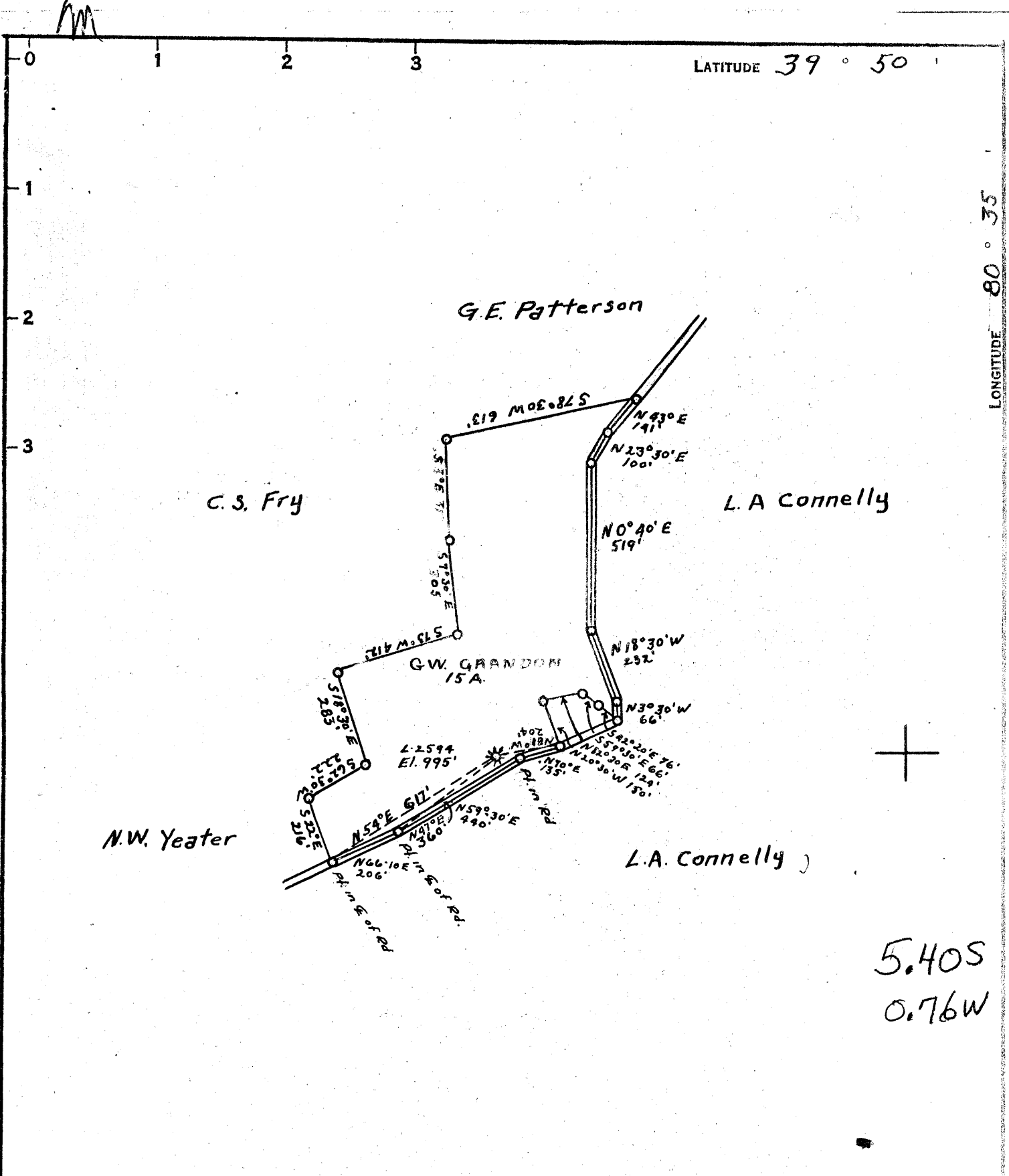
WELL LOCATION MAP

FILE No. MARS-284-~~REDRILL~~
Storage

+ DENOTES LOCATION OF WELL ON UNITED STATES TOPOGRAPHIC MAPS, SCALE 1 TO 62,500. LATITUDE AND LONGITUDE LINES BEING REPRESENTED BY BORDER LINES AS SHOWN.

- DENOTES ONE INCH SPACES ON BORDER LINE OF ORIGINAL TRACING.

SEP 20 1993



COAL OWNED BY Denver Fuel Company
 % Atty A.D. Williams Uniontown Pa

NEW LOCATION.....
 DRILL DEEPER.....
 ABANDONMENT..... **ORIGINALLY ABANDONED - MARS-289-A**

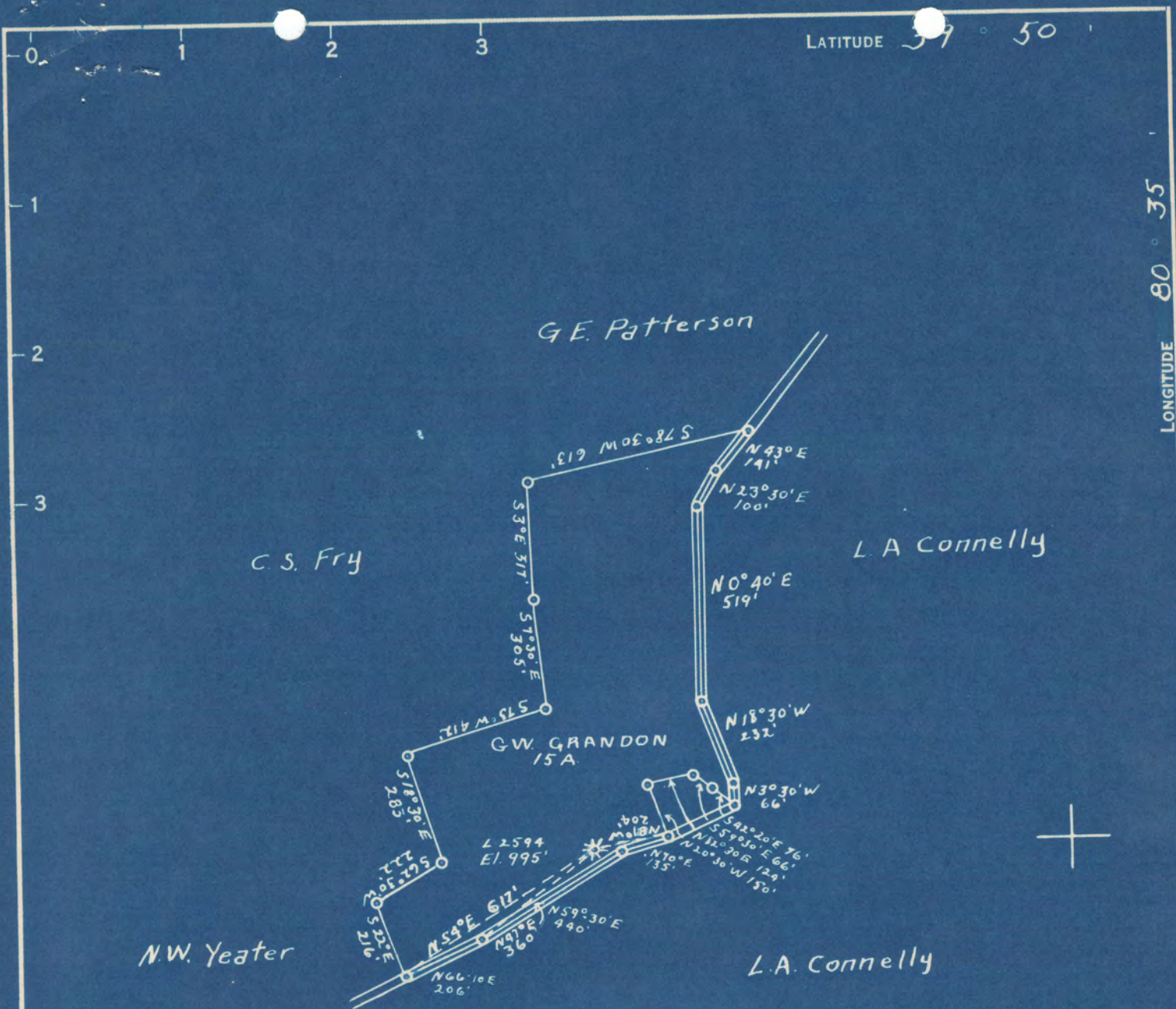
COMPANY The Manufacturers Light & Heat Co
 ADDRESS 800 Union Trust Bldg, Pittsburgh Pa
 FARM G. W. Grandon NOW: R.G. CUMPTON
 TRACT 20 ACRES 15 LEASE No. 1948
 WELL (FARM) No. 1 SERIAL No. 2594
 ELEVATION (SPIRIT LEVEL) 995'
 QUADRANGLE Cameron
 COUNTY Marshall DISTRICT Liberty
 ENGINEER Thomas Virginia
 ENGINEER'S REGISTRATION No. _____
 FILE No. _____ DRAWING No. Y-13-161
 DATE Feb 3 1949 SCALE 1" = 400'

STATE OF WEST VIRGINIA
 DEPARTMENT OF MINES
 OIL AND GAS DIVISION
 CHARLESTON

WELL LOCATION MAP

FILE No. MARS-284-REDRILL
 STORAGE

+ DENOTES LOCATION OF WELL ON UNITED STATES TOPOGRAPHIC MAPS, SCALE 1 TO 62,500, LATITUDE AND LONGITUDE LINES BEING REPRESENTED BY BORDER LINES AS SHOWN.
 — DENOTES ONE INCH SPACES ON BORDER LINE OF ORIGINAL TRACING.



5.425
0.76W
5.50 S
0.77 W

COAL OWNED BY Denver Fuel Company
% Atty A.D. Williams Uniontown Pa

NEW LOCATION.....
 DRILL DEEPER.....
 ABANDONMENT.....

COMPANY The Manufacturers Light & Heat Co
 ADDRESS 800 Union Trust Bldg, Pittsburgh Pa
 FARM G. W. Grandon
 TRACT 20 ACRES 15 LEASE No. 7948
 WELL (FARM) No. 1 SERIAL No. 2594
 ELEVATION (SPIRIT LEVEL) 995'
 QUADRANGLE Cameron
 COUNTY Marshall DISTRICT Liberty
 ENGINEER Thomas Virgin
 ENGINEER'S REGISTRATION No. _____
 FILE No. _____ DRAWING No. Y-13-161
 DATE Feb 3 1949 SCALE 1" = 400'

STATE OF WEST VIRGINIA
 DEPARTMENT OF MINES
 OIL AND GAS DIVISION
 CHARLESTON

WELL LOCATION MAP

FILE No. MARS-289-A

now Marsh 284 Redrill
 + DENOTES LOCATION OF WELL ON UNITED STATES TOPOGRAPHIC MAPS. SCALE 1 TO 62,500, LATITUDE AND LONGITUDE LINES BEING REPRESENTED BY BORDER LINES AS SHOWN.
 - DENOTES ONE INCH SPACES ON BORDER LINE OF ORIGINAL TRACING.



STATE OF WEST VIRGINIA
DEPARTMENT OF MINES
OIL AND GAS DIVISION

Quadrangle Cameron

WELL RECORD

Permit No. MARS-284-R

Oil or Gas Well Storage
(KIND)

Company THE MANUFACTURERS LIGHT & HEAT COMPANY

Address 800 Union Trust Bldg., Pgh., Pa.

Farm G. W. Grandon Acres 14.73

Location (waters) _____

Well No. 2594 Elev. 995'

District Liberty County Marshall, W. Va.

The surface of tract is owned in fee by _____

Address _____

Mineral rights are owned by _____

Address _____

Drilling commenced May 5, 1955

Drilling completed July 7, 1955

Date Shot _____ From _____ To _____

With _____

Open Flow _____ /10ths Water in _____ Inch

_____ /10ths Merc. in _____ Inch

Volume No gas to test Cu. Ft.

Rock Pressure _____ lbs. _____ hrs.

Oil _____ bbls., 1st 24 hrs.

Fresh water _____ feet _____ feet

Salt water _____ feet _____ feet

Casing and Tubing	Used in Drilling	Left in Well	Packers
Size			Kind of Packer
16			
13			
10		170	Size of
8 1/4		1005	
7		1617	Depth set
5 3/16			
3			Perf. top
2			Perf. bottom
Liners Used			Perf. top
			Perf. bottom

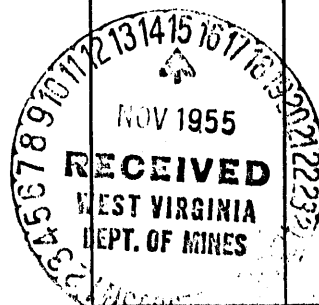
CASING CEMENTED _____ SIZE _____ No. Ft. _____ Date _____

COAL WAS ENCOUNTERED AT 71 FEET _____ INCHES

400 FEET _____ INCHES 508 FEET _____ INCHES

_____ FEET _____ INCHES _____ FEET _____ INCHES

Formation	Color	Hard or Soft	Top	Bottom	Oil, Gas or Water	Depth Found	Remarks
✓ Native Coal			71	73			
✓ Mapletown Coal			400	406			
✓ Pittsburgh Coal			508	515			
✓ Maxon Sand			1510	Not determined			
✓ Big Injun Sand			1647	1896			
Total Depth			1886				
7" shoe set at			1607				
					Run 170' of 10-3/4" casing SM H40 32.-75# on steel shoe. Cemented with 150 bags cement. Good return at surface. Run 896' of 8-5/8" casing. SM J55 24# and connected it to 109' of original casing with a casing die nipple. Cemented with 200 bags cement and 2 bags Aquagel. Good return of cement at surface. Run 1617' of 7" casing, Sm. Gr.H. 17# on steel shoe set at 1607'. Cemented with 200 bags cement and 4 bags Aquagel. Good return of cement at surface.		





STATE OF WEST VIRGINIA
DEPARTMENT OF MINES
OIL AND GAS DIVISION

334

WELL RECORD

Permit No. Ab 289-A Oil or Gas Well Oil
(KIND)

Company The Manufacturers Light & Heat Company
Address 800 Union Trust Bldg.
Farm G. W. Grandon Acres 16
Location (waters) _____
Well No. 2594 Elev. _____
District Liberty County Marshall
The surface of tract is owned in fee by R. G. Cumpston
Star Route 2, Address Cameron, W. Va.
Mineral rights are owned by The Mfrs. Light & Heat Co.
800 Union Trust Bldg. Address Pittsburgh, Pa.
Drilling commenced September 2, 1920
Drilling completed November 9, 1920
Date Shot _____ From _____ To _____
With _____

Casing and Tubing	Used in Drilling	Left in Well	Packers
Size			
16			Kind of Packer
18			
10	171	171	Size of <u>6-5/8 x 4</u>
8 1/4	1005	1005	
6 1/2	1616	1616	Depth set <u>1868</u>
5 3/16			
3			Perf. top
2			Perf. bottom
Liners Used			Perf. top
			Perf. bottom

Open Flow _____ /10ths Water in _____ Inch
_____ /10ths Merc. in _____ Inch
Volume _____ Cu. Ft.
Rock Pressure 340 lbs. _____ hrs.
Oil _____ bbls., 1st 24 hrs.
Fresh water _____ feet
Salt water _____ feet

CASING CEMENTED _____ SIZE _____ No. Ft. _____ Date _____
COAL WAS ENCOUNTERED AT 71 FEET 24 INCHES
400 FEET 72 INCHES 508 FEET 84 INCHES
_____ FEET _____ INCHES _____ FEET _____ INCHES

Formation	Color	Hard or Soft	Top	Bottom	Oil, Gas or Water	Depth Found	Remarks
Coal			71	73			
Mapletown Coal			400	406			
Pittsburgh Coal			508	515			Hole full water 120'
Red Rock			645	665			
Murphy Sand			790	803			
Big Dunkard			1002	1015			
Gas Sand			1123	1135			
First Salt Sand			1424	1430			
Second Salt Sand			1441	1515			
Maxon Sand			1553	1595			Little Gas 1580
Big Lime			1599	1645			
Big Injun			1645	1907			
Fifty Foot Sand			2468	2476			
Gordon Sand			2498	2528			Gas 2502 - 2507
Fourth Sand			2564	2577			
Fifth Sand			2592	2596			Gas 2593 - 2596
TOTAL DEPTH			2608				



Formation	Color	Hard or Soft	Top	Bottom	Oil, Gas or Water	Depth Found	Remarks

Date **FEBRUARY 24,** 194**9**

APPROVED **THE MANUFACTURERS LIGHT & HEAT COMPANY**, Owner

By *Paul Cooper* LAND AGENT.
(Title)

G. W. GRANDON NO. 2594 WELL.

Liberty District, Marshall County, W. Va. 1072
 By The Manufacturers Light & Heat Co., 800 Union Trust Bldg.,
 Pittsburgh, Pa.

Abandoned under permit Mars-----AT

On 16 acres.

Elevation, L.

Surface owned by R. G. Cumpston, Star Route 2, Cameron, W. Va., and
 minerals by The Manufacturers Light & Heat Co., 800 Union Trust
 Bldg., Pittsburgh, Pa.

Drilling commenced Sept. 2, 1920; completed Nov. 9, 1920.

Rock pressure, 340 lbs.

10" casing, 171'; 8 1/2", 1005'; 6", 1616'; all left in.

Packer, 6" x 4", set at 1868'.

Coal was encountered at 71-73, 400-406, and 508-515'.

Gas well. Abandonment reported to Dept. of Mines Feb. 24, 1949.

Record to RCF from Mrs. Griffith May 21, 1949. Old File No. 334.

	Top.	Bottom.
Coal	71	73
(hole full water, 120')		
Mapletown (Sewickley) Coal	400	406
Pittsburgh Coal	508	515
Red rock	645	665
Murphy Sand	790	803
Big Dunkard Sand	1002	1015
Gas Sand	1123	1135
First Salt Sand	1424	1430
Second Salt Sand	1441	1515
Marten Sand (little gas, 1580')	1553	1595
Big Lime	1599	1645
Big Injun Sand	1645	1907
Fifty-foot Sand	2468	2476
Gordon Sand (gas, 2502-2507')	2498	2528
Fourth Sand	2564	2577
Fifth Sand (gas, 2593-2596')	2592	2596
Total depth		2608

WEST VIRGINIA DEPARTMENT OF MINES

OIL AND GAS DIVISION

PERMITS TO DRILL

1955 (1)

COUNTY MARSHALL

FILE NO.	NAME OF APPLICANT	ADDRESS	RECEIVED	ISSUED	FARM	WELL NO.	DISTRICT	KIND	completed
273	The Manufacturers Lgt. & Heat Co.	Pittsburgh, Pa.	12/27/54	1/6/55	C. N. Yoho	F-13419	Liberty	Storage	6/27/55
124-D	The Manufacturers Light & Heat Co.	Pittsburgh, Pa.	1/6/55	1/17/55	Beatrice Yeater	3626	Liberty	Storage	4/13/55
274	The Manufacturers Lgt. & Heat Co.	Pittsburgh, Pa.	1/28/55	2/7/55	W. J. Booher	1-2527	Liberty	Storage	4/29/55
275	The Manufacturers Lgt. & Heat Co.	Pittsburgh, Pa.	1/29/55	2/8/55	George N. Yoho	F-21779	Liberty	Storage	5/17/57
276	The Manufacturers Lgt. & Heat Co.	Pittsburgh, Pa.	2/11/55	2/21/55	T. O. Johnson Now 4432	F-31752	Liberty	Storage	11/1/56
277-redrill	The Manufacturers Lgt. & Heat Co.	Pittsburgh, Pa.	4/4/55	4/14/55	G. M. Miller	2172	Liberty	Storage Storage	7/29/55
278	The Manufacturers Lgt. & Heat Co.	Pittsburgh, Pa.	4/4/55	4/14/55	C. R. Milliken	1-4284	Sandhill	Storage	9/2/54
279	The Manufacturers Lgt. & Heat Co.	Pittsburgh, Pa.	4/4/55	4/14/55	Alta Alma Brown	1-4293	Sandhill	Storage	11/12/54
280	The Manufacturers Light & Heat Co.	Pittsburgh, Pa.	4/15/55	4/25/55	George N. Yoho	3089	Liberty	Renewed 1957	
281-redrill	The Manufacturers Light & Heat Co.	Pittsburgh, Pa.	4/18/55	4/28/55	Catherine Fry Est.	3025	Liberty	Renewed 1957	
282-redrill	The Manufacturers Light & Heat Co.	Pittsburgh, Pa.	4/27/55	5/7/55	E. R. Hinerman et al	2701	Liberty	Storage	
283-redrill	The Manufacturers Light & Heat	Pittsburgh, Pa.	4/27/55	5/7/55	E. R. Hinerman et al	2270	Liberty	Storage - Renewed 1957	
* 284-redrill	The Manufacturers Light & Heat	Pittsburgh, Pa.	4/28/55	5/9/55	R. G. Cumpston et al	2594	Liberty	Storage plug pd 10/11/7/7/55	*
285-redrill	The Manufacturers Light & Heat	Pittsburgh, Pa.	5/10/55	5/20/55	Harold Koontz	3-4304	Webster	Storage	2/4/55
286	The Manufacturers Light & Heat Co.	Pittsburgh, Pa.	8/12/55	8/17/55	C. F. Herrick	1-4320	Meade	Cancelled 9/26/55	
287	The Manufacturers Light & Heat Co.	Pittsburgh, Pa.	9/22/55	10/3/55	Andrew Stein	1/4320	Meade	Gas	12/16/55
288-Redrill	The Manufacturers Light & Heat Co.	Pittsburgh, Pa.	10/3/55	10/13/55	Olive E. Phillips	F-14652	Webster	Storage	2/28/56
289	Denver Oil & Gas Company	Cameron, W. Va.	10/4/55	10/18/55	Laura M. Richards	1	Liberty	DRY	8/15/56
290	The Manufacturers Lgt. & Heat Co.	Pittsburgh, Pa.	10/6/55	10/17/55	C. W. Dague	F-32335	Sandhill	Gas	3/9/56
291-Redrill	The Manufacturers Lgt. & Heat Co.	Pittsburgh, Pa.	10/13/55	10/24/55	Wesley C. Fisher	F-3484	Webster	Gas	4/6/56
292-Redrill	The Manufacturers Lgt. & Heat Co.	Pittsburgh, Pa.	10/13/55	10/24/55	Harold Koontz	F-14582	Webster	Storage	5/28/56
293-Redrill	The Manufacturers Lgt. & Heat Co.	Pittsburgh, Pa.	10/25/55	11/4/55	Mary M. Barto	1556	Webster	Gas	4/30/56
294-Redrill	The Manufacturers Lgt. & Heat Co.	Pittsburgh, Pa.	10/26/55	11/5/55	W. P. Sammons	F-3486	Webster	Storage (Abnd)	7/29/57
Straight Drilling Number									