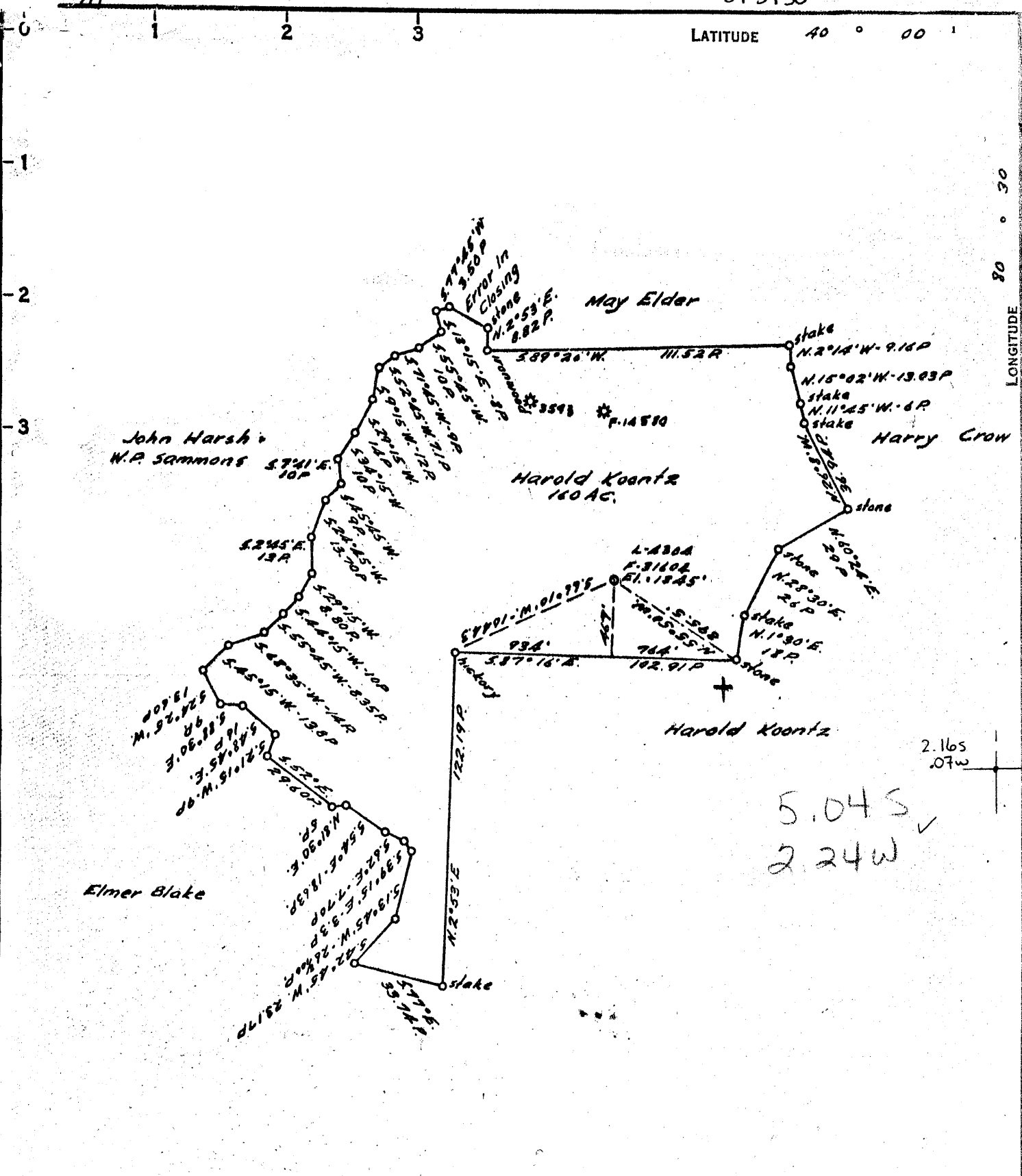


39°57'30"

LATITUDE 40 ° 00 '

LONGITUDE 80 ° 32'30"



5.04 S
2.24 W

COAL OWNED BY _____
 Reconditioned & For Storage
 NEW LOCATION.....
 DRILL DEEPER.....
 ABANDONMENT.....

COMPANY The Manufacturers Light & Heat Co.
 ADDRESS 800 Union Trust Bldg. Pgh. Pa.
 FARM Harold Koontz
 TRACT _____ ACRES 160 LEASE No. 19406
 WELL (FARM) No. 3 SERIAL No. 430A
 ELEVATION (SPIRIT LEVEL) 1345'
 QUADRANGLE Cameron
 COUNTY Marshall DISTRICT Webster
 ENGINEER AG Streator - J.M.
 ENGINEER'S REGISTRATION No. 9442
 FILE No. _____ DRAWING No. Y-15-223
 DATE 22 Apr. 1955 SCALE 1" = 800

STATE OF WEST VIRGINIA
 DEPARTMENT OF MINES
 OIL AND GAS DIVISION
 CHARLESTON

WELL LOCATION MAP

FILE No. MARS-285-Redrill

+ DENOTES LOCATION OF WELL ON UNITED STATES TOPOGRAPHIC MAPS, SCALE 1 TO 62,500. LATITUDE AND LONGITUDE LINES BEING REPRESENTED BY BORDER LINES AS SHOWN.

- DENOTES ONE INCH SPACES ON BORDER LINE OF ORIGINAL TRACING.



STATE OF WEST VIRGINIA
DEPARTMENT OF MINES
OIL AND GAS DIVISION

Quadrangle Cameron

WELL RECORD

Permit No. MARS-285-R

Oil or Gas Well Gas
(KIND)

Company THE MANUFACTURERS LIGHT AND HEAT CO.
Address 800 Union Trust Bldg., Pgh., Penna.
Farm Harold Koontz Acres 160
Location (waters) _____
Well No. 3-4304 Elev. 1345'
District Webster County Marshall
The surface of tract is owned in fee by _____
Address _____
Mineral rights are owned by _____
Address _____
Drilling commenced August, 1954
Drilling completed February 4, 1955
Date Shot _____ From _____ To _____
With _____
Open Flow 40 /10ths Water in 2" Inch
_____ /10ths Merc. in _____ Inch
Volume 198,312 Cu. Ft.
Rock Pressure 750 lbs. 24 hrs.
Oil _____ bbls., 1st 24 hrs.
Fresh water _____ feet
Salt water _____ feet

| Casing and Tubing | Used in Drilling | Left in Well | Packers |
|-------------------|------------------|--------------|----------------|
| Size | | | |
| 16 | | | Kind of Packer |
| 18 | 161' | 161' | |
| 10 | 842' | 842' | Size of |
| 8 1/4 | 1305' | 1305' | |
| 6 3/4 | 1595' | 1595' | Depth set |
| 5 3/16 | 1947' | 1947' | |
| 8 | | | Perf. top |
| 2 | | | Perf. bottom |
| Liners Used | | | Perf. top |
| | | | Perf. bottom |

CASING CEMENTED _____ SIZE _____ No. Ft. _____ Date _____

COAL WAS ENCOUNTERED AT 813 FEET _____ INCHES
_____ FEET _____ INCHES
_____ FEET _____ INCHES

| Formation | Color | Hard or Soft | Top | Bottom | Oil, Gas or Water | Depth Found | Remarks |
|--|-------|--------------|------|--------|-------------------|-------------|---------|
| TAKEN FROM SCHLUMBERGER GAMMA RAY SURVEY | | | | | | | |
| ✓ Pittsburgh Coal | | | 813 | 822 | | | |
| ✓ 1st Gas Sand | | | 1455 | 1532 | | | |
| ✓ 1st & 2nd Salt Sands | | | 1563 | 1662 | | | |
| ✓ 3rd Salt Sand | | 1716 | 1716 | 1777 | | | |
| ✓ Maxton Sand | | | 1813 | 1858 | | | |
| ✓ Big Lime | | | 1900 | 1908 | | | |
| ✓ Big Injun | | | 1908 | 2144 | | | |
| Total Depth | | | 2170 | | | | |

875

