

0.55 S
1.24 W

COAL OWNED BY _____
 RECONITIONED

NEW LOCATION.....

DRILL DEEPER.....

ABANDONMENT.....

COMPANY THE MANUFACTURERS LIGHT & HEAT CO.

ADDRESS 800 UNION TRUST BLDG. PGH. PENNA.

FARM MARY MARG'T BARTO

TRACT _____ ACRES 155 AC. 102A LEASE NO. 23071

WELL (FARM) No. 1 SERIAL No. L-1556

ELEVATION (SPIRIT LEVEL) 1320.30'

QUADRANGLE CAMERON EC

COUNTY MARSHALL DISTRICT WEBSTER

ENGINEER A. C. Treaton - J.M.

ENGINEER'S REGISTRATION No. 9442

FILE No. _____ DRAWING No. Y-15-309

DATE 13 OCTOBER 1955 SCALE 1"=800'

STATE OF WEST VIRGINIA
 DEPARTMENT OF MINES
 OIL AND GAS DIVISION
 CHARLESTON

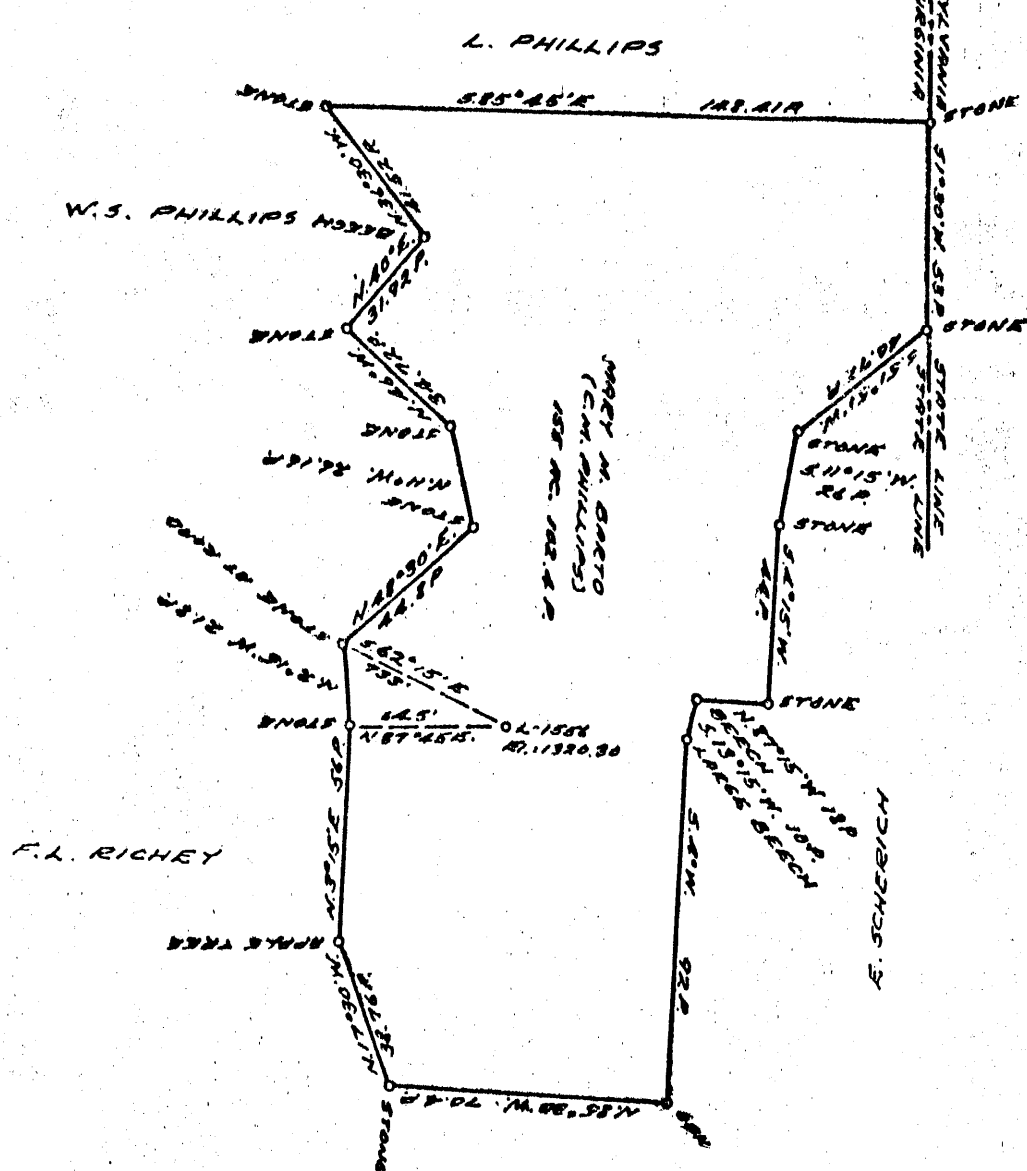
WELL LOCATION MAP

FILE No. MARS-293-Redrill
 sa: well as 296? *called storage well*

+ DENOTES LOCATION OF WELL ON UNITED STATES TOPOGRAPHIC MAPS. SCALE 1 TO 62,500. LATITUDE AND LONGITUDE LINES BEING REPRESENTED BY BORDER LINES AS SHOWN.

- DENOTES ONE INCH SPACES ON BORDER LINE OF ORIGINAL TRACING.

0 1 2 3 LATITUDE 39 ° 58 ' 1
 -1
 -2
 -3
 +
 0.535
 1.51W
 LONGITUDE 80 ° 30'



COAL OWNED BY _____
 RECONDITION _____
 NEW LOCATION.....
 DRILL DEEPER.....
 ABANDONMENT.....

COMPANY THE MANUFACTURERS LIGHT & HEAT
 ADDRESS 800 UNION TRUST BLDG. PGH, PA.
 FARM MARY M. BARTO
 TRACT _____ ACRES 180 LEASE NO. 23071
 WELL (FARM) No. 1 SERIAL No. 1556
 ELEVATION (SPIRIT LEVEL) 1320.30'
 QUADRANGLE CAMERON EC
 COUNTY MARSHALL DISTRICT WEBSTER
 ENGINEER A. C. Streater - J.M.
 ENGINEER'S REGISTRATION No. 9442
 FILE No. _____ DRAWING No. Y-15-432
 DATE 23 JULY 1956 SCALE 1" = 800'

STATE OF WEST VIRGINIA
 DEPARTMENT OF MINES
 OIL AND GAS DIVISION
 CHARLESTON

WELL LOCATION MAP
 FILE No. MARS-296-Redrill
 Sa. well as 293?

+ DENOTES LOCATION OF WELL ON UNITED STATES TOPOGRAPHIC MAPS, SCALE 1 TO 62,500, LATITUDE AND LONGITUDE LINES BEING REPRESENTED BY BORDER LINES AS SHOWN.
 - DENOTES ONE INCH SPACES ON BORDER LINE OF ORIGINAL TRACING.

*Called and
 Approved
 Well by
 Dept.*



STATE OF WEST VIRGINIA
DEPARTMENT OF MINES
OIL AND GAS DIVISION 7

Quadrangle Cacapon

Permit No. Mars-296

WELL RECORD

Oil or Gas Well Gas
(KIND)

Company THE MANUFACTURERS LIGHT AND HEAT COMPANY
Address 800 UNION TRUST BUILDING, PITTSBURGH, PA.
Farm Mary Marg't Barto (C. M. Phillips) 80
Location (waters) _____
Well No. L-1556 Elev. 1320.30
District Webster County Marshall
The surface of tract is owned in fee by _____
Address _____
Mineral rights are owned by _____
Address _____

Casing and Tubing Size	Used in Drilling	Left in Well	Packers
16			Kind of Packer _____
13	139'	139'	
10	820'	820'	Size of _____
8 1/4	1316'	1316'	
6 3/4	1845'	1845'	Depth set _____
5 3/16			
3			Perf. top _____
2			Perf. bottom _____
Liners Used			Perf. top _____
			Perf. bottom _____

Reconditioning
Drilling commenced December, 1955
Drilling completed April 30, 1956
Date Shot _____ From _____ To _____
With _____
Open Flow _____ /10ths Water in _____ Inch
_____ /10ths Merc. in _____ Inch
Volume _____ Cu. Ft.
Rock Pressure _____ lbs. _____ hrs.
Oil _____ bbls., 1st 24 hrs.
Fresh water _____ feet _____ feet
Salt water _____ feet _____ feet

CASING CEMENTED _____ SIZE _____ No. Ft. _____ Date _____
COAL WAS ENCOUNTERED AT _____ FEET _____ INCHES
_____ FEET _____ INCHES FEET _____ INCHES
_____ FEET _____ INCHES FEET _____ INCHES

Formation	Color	Hard or Soft	Top	Bottom	Oil, Gas or Water	Depth Found	Remarks
<u>SCHLUMBERGER GAMMA RAY SURVEY</u>							
✓ Pittsburgh Coal			780	785	5		
Sand or Lime			1177	1217	40		
Sand or Lime			1250	1300	50		
✓ Big Dunkard Sand			1317	1364	47		
✓ Gas Sand			1431	1478	47		
✓ 1st Salt Sand (Broken)			1513	1587	74		
✓ 2nd Salt Sand			1607	1642	35		
✓ 3rd Salt Sand			1708	1740	32		
✓ Maxton Sand			1766	1836	70		
✓ Pencil Cave			1836	1843	7		
Sand or Lime			1843	1850	7		
Slate			1850	1856	6		
✓ Big Lime			1856	1888	32		
✓ Big Injun			1897				
Cleaned out to 2015'							
on wood plug and plugged							
back to 2000' as follows:							
Chips			2012	2015			
Lead Plug			2010	2012			
Cement			2000	2010			
Total Depth				2000			

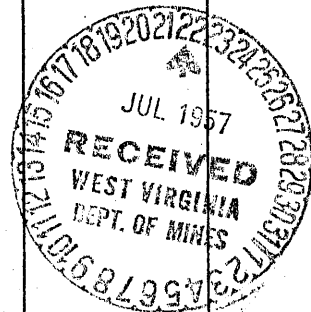
1856
1320
536

275

OBSERVATION WELL

Reconditioned on W.O. 1552-L-1190-5
Elevation-1320.30'
13 3/8" Csg. 138'4" Cemented with 125 bags. 1-30-56
10 3/4" Csg. 820' Cemented with 250 bags. 3-1-56
8 5/8" Csg. 1316' Cemented with 250 bags. 3-16-56
7" Csg. 1845' Cemented with 190 bags. 4-11-56

GAS 1968' (TOP)
Water produced with the gas.
Neutronlog did not indicate a gas - water contact.
4-19-56 Before plugging back, well made 400' of water in 6" hole in 24 hrs. 4-24-56



Formation	Color	Hard or Soft	Top ⁴	Bottom	Oil, Gas or Water	Depth Found	Remarks
<p>After plugging back to 2000', well made 200' of water in 6" hole in 24 hours.</p> <p>Well originally plugged in April 1913. Cleaned out to 2015' on this work order for Big Injun Observation Well.</p>							

Date July 19, 1957

APPROVED THE MANUFACTURERS LIGHT AND HEAT CO. Owner

By *Walter A. Quinn*
(Title) Land Agent



STATE OF WEST VIRGINIA
DEPARTMENT OF MINES
OIL AND GAS DIVISION

WELL RECORD

Quadrangle Cameron

Permit No. MARS-293-R

Oil or Gas Well _____ Gas
(KIND)

Company THE MANUFACTURERS LIGHT AND HEAT COMPANY

Address 800 UNION TRUST BUILDING, PGH., PA.

Farm Mary Marg't Barto (C.M. Phillips) 80 Acres

Location (waters) _____

Well No. L-1556 Elev. 1320.30'

District Webster County Marshall

The surface of tract is owned in fee by _____
Address _____

Mineral rights are owned by _____
Address _____

Conditioning December, 1955

Drilling commenced _____
Drilling completed April 30, 1956

Date Shot _____ From _____ To _____

With _____

Open Flow 8 /10ths Water in _____ 5/8 Inch

_____ /10ths Merc. in _____ Inch

Volume 8,662 Cu. Ft.

Rock Pressure 325 lbs. 120 hrs.

Oil _____ bbls., 1st 24 hrs.

Fresh water _____ feet _____ feet

Salt water _____ feet _____ feet

Casing and Tubing	Used in Drilling	Left in Well	Packers
Size			Kind of Packer
16			
13	139'	139'	
10	820'	820'	Size of
8 1/4	1316'	1316'	
6 5/8	1845'	1845'	Depth set
5 3/16			
3			Perf. top
2			Perf. bottom
Liners Used			Perf. top
			Perf. bottom

CASING CEMENTED _____ SIZE _____ No. Ft. _____ Date _____

COAL WAS ENCOUNTERED AT 780 FEET _____ INCHES
_____ FEET _____ INCHES FEET _____ INCHES
_____ FEET _____ INCHES FEET _____ INCHES

Formation	Color	Hard or Soft	Top	Bottom	Oil, Gas or Water	Depth Found	Remarks
<u>SCHLUMBERGER GAMMA RAY SURVEY</u>							
Pittsburgh Coal			780	785	OBSERVATION WELL		
Sand or Lime			1177	1217	Reconditioned on W.O. 1552-L-1190-5		
Sand or Lime			1250	1300	Elevation - 1320.30'		
Big Dunkard Sand			1317	1364	13 3/8" Csg. - 138'4" Cemented with 125 bags		
Gas Sand			1431	1478	10 3/4" Csg. - 820' Cemented with 240 bags.		
1st Salt Sand (Broken)			1513	1587	3-1-56		
2nd Salt Sand			1607	1642	8 5/8" Csg. - 1316' Cemented with 250 bags		
3rd Salt Sand			1708	1740	3-16-56		
Maxton Sand			1766	1836	7" Csg. - 1845' Cemented with 190 bags.		
Pencil Cave			1836	1843	4-11-56		
Sand or Lime			1843	1850			
Slate			1850	1856			
Big Lime			1856	1888			
Big Injun			1897		Gas - 1968' (Top)		
Cleaned out to 2015'					Water produced with the gas.		
on wood plug and plugged back to 2000' as follows:					Neutron log did not indicate a gas - water contact.		
Chips			2012	2015	4-19-56 Before plugging back, well made		
Lead Plug			2010	2012	400' of water in 6" Hole in 24 hrs.		
					4-24-56		
Cement			2000	2010	After plugging back to 2000', well made		
TOTAL DEPTH				2000	200' of water in 6" hole in 24 hours.		
Well originally plugged in April 1913. Cleaned out to 2015' on this work order for Big Injun Observation Well.							

1856
1320
536

