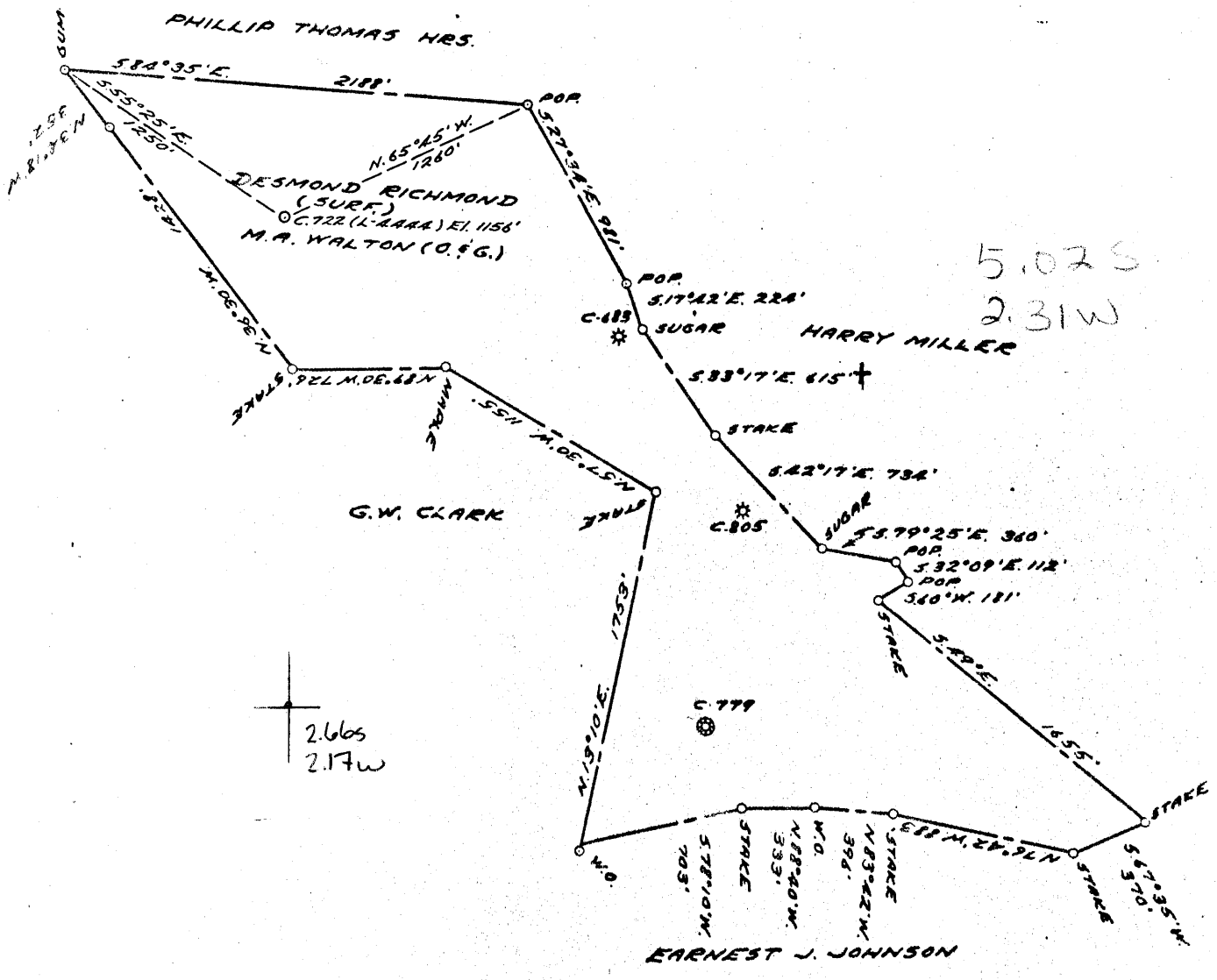


39°47'30"

LATITUDE 39 0 50 1

LONGITUDE 80 0 35'



COAL OWNED BY _____
RECON. FOR STORAGE X

NEW LOCATION.....

DRILL DEEPER.....

ABANDONMENT.....

COMPANY THE MANUFACTURERS LIGHT & HEAT CO.

ADDRESS 800 UNION TRUST BLDG. PGH. PENNA.

FARM M.A. WALTON (D. RICHMOND)

TRACT _____ ACRES 140 LEASE No. 28903

WELL (FARM) No. 2 SERIAL No. C.722 L-AAAA

ELEVATION (SPIRIT LEVEL) 1156'

QUADRANGLE CAMERON

COUNTY MARSHALL DISTRICT LIBERTY

ENGINEER Thomas E. Virgin J.M.

ENGINEER'S REGISTRATION No. 1503

FILE No. _____ DRAWING No. Y-15-532

DATE 26 FEB. 1957 SCALE 1" = 800'

STATE OF WEST VIRGINIA
DEPARTMENT OF MINES
OIL AND GAS DIVISION
CHARLESTON

WELL LOCATION MAP

FILE No. MARS-302

+ DENOTES LOCATION OF WELL ON UNITED STATES TOPOGRAPHIC MAPS, SCALE 1 TO 62,500. LATITUDE AND LONGITUDE LINES BEING REPRESENTED BY BORDER LINES AS SHOWN.

- DENOTES ONE INCH SPACES ON BORDER LINE OF ORIGINAL TRACING.

9-0 25



STATE OF WEST VIRGINIA
DEPARTMENT OF MINES
OIL AND GAS DIVISION

Quadrangle Cameron

Permit No. WV-302

WELL RECORD

Oil or Gas Well Storage Gas
(KIND)

Company THE MANUFACTURERS LIGHT AND HEAT COMPANY

Address 800 UNION TRUST BUILDING, PGH, PA.

Farm M. A. Walton Acres 140

Location (waters) _____

Well No. 4444 Elev. 1156

District Liberty County Marshall

The surface of tract is owned in fee by _____

Address _____

Mineral rights are owned by _____

Address _____

Drilling commenced 4/16/57

Drilling completed June 24, 1957

Date Shot _____ From _____ To _____

With _____

Open Flow _____ /10ths Water in _____ Inch

_____ /10ths Merc. in _____ Inch

Volume _____ Cu. Ft.

Rock Pressure _____ lbs. _____ hrs.

Oil _____ bbls., 1st 24 hrs.

Fresh water _____ feet _____ feet

Salt water _____ feet _____ feet

Casing and Tubing	Used in Drilling	Left in Well	Packers
Size			
16			Kind of Packer _____
13			
10		306'	Size of _____
8 3/4		1284'	
6 7/8 7"		1408'	Depth set _____
5 3/16 4"		1872'	
3			Perf. top _____
2			Perf. bottom _____
Liners Used _____			Perf. top _____
			Perf. bottom _____

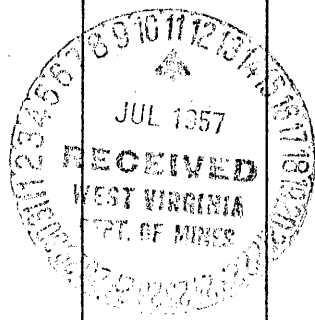
CASING CEMENTED _____ SIZE _____ No. Ft. _____ Date _____

COAL WAS ENCOUNTERED AT _____ FEET _____ INCHES

_____ FEET _____ INCHES _____ FEET _____ INCHES

_____ FEET _____ INCHES _____ FEET _____ INCHES

Formation	Color	Hard or Soft	Top	Bottom	Oil, Gas or Water	Depth Found	Remarks
Schlumberger Survey							
Pittsburgh Coal			862	870			
Maxton Sand			1857	1881			
Total Depth				1881'			
4 1/2" Steel Shoe set at				1857'			
					All pipe measured over threads. Run 306' of 10 3/4" Casing, SM.Gr.H. 32# on a Steel Shoe. This pipe was not cemented. Run 1284' of 8 5/8" Casing, SM.J55. 24# on a Steel Shoe. Cemented with 225 bags cement. No return of cement at the surface. Run 1408' of 7" Casing, Sm. J55. 20# on a Steel Shoe. Cemented with 125 bags of cement and 2 bags of Aquagel. No return of cement and 2 bags of Aquagel. No return of cement at the surface. Cleaned out to a depth of 2784' and plugged back to 1881' with 200 bags cement. Run 1872' of 4 1/2" Tubing, SM. J55. 12# on a Steel Shoe set at 1857'. Casing Centralizers were spaced at depths of 1600', 1350', 1090', 800' and 525' and 350'. Cemented with 230 bags cement and 2 bags Aquagel. Good return of cement at the surface. The sand was washed down with Mud Acid. No gas to test.		



Liberty District, Marshall County, W. Va.

By Carnegie Natural Gas Co.

Cameron SE Quadrangle.

On 140 acres; lease No. 9827.

Drilling commenced May 26, 1917; completed, June 27, 1917.

1,600,000 cu. ft. gas in Maxton; 675# R. P.

Drilled deeper from 1889', April 1, 1919, to 2117'.

700,000 cu. ft. gas at 2096 and 2100' (Big Injun Sand);

Drilled deeper from 2117' to 3038', Dec. 17, 1923.

Dry in last deeper drilling.

Abandoned Dec. 22, 1923.

No elevation.

Record from Wilcox 10-15-39.

MARS-302-~~302~~

Top. Bottom.

(Water at 65')		
✓ Mapletown (Sewickley) Coal	770 - 777	
✓ Pittsburgh Coal (water)	862 - 870	
✓ Big Dunkard Sand (BURNING-SPRINGS)	1391 - 1421	
✓ 1st Gas Sand (GAS)	1500 - 1530	This correlation questionable
✓ 1st Salt Sand (2nd COW RUN)	1555 - 1670	
✓ 2nd Salt Sand (SALT)	1721 - 1812	
✓ Maxton Sand (gas at 1874-84'; 1,600,000 cu. ft.; 675# R. P.)	1812 - 1889	
DRILLED DEEPER from 1889', 4-1-19:		
✓ Big Lime	1935 - 1995	
✓ Big Injun Sand (gas at 2096 and 2100', 700,000 cu. ft.)	1995 - 2117	
DRILLED DEEPER from 2117', 12-17-23:		
Lime	2257 - 2293	
✓ 50' Sand (WEIR)	2393 - 2425	1935
✓ 30' Sand (BEREA)	2591 - 2613	
✓ Gordon Stray Sand (30')	2796 - 2810	
✓ Gordon Sand	2850 - 2872	711
✓ 4th Sand	2911 - 2918	
(Dry on last deeper drilling)		
Total depth		3038

2117
1889

228-

3038
2117

921