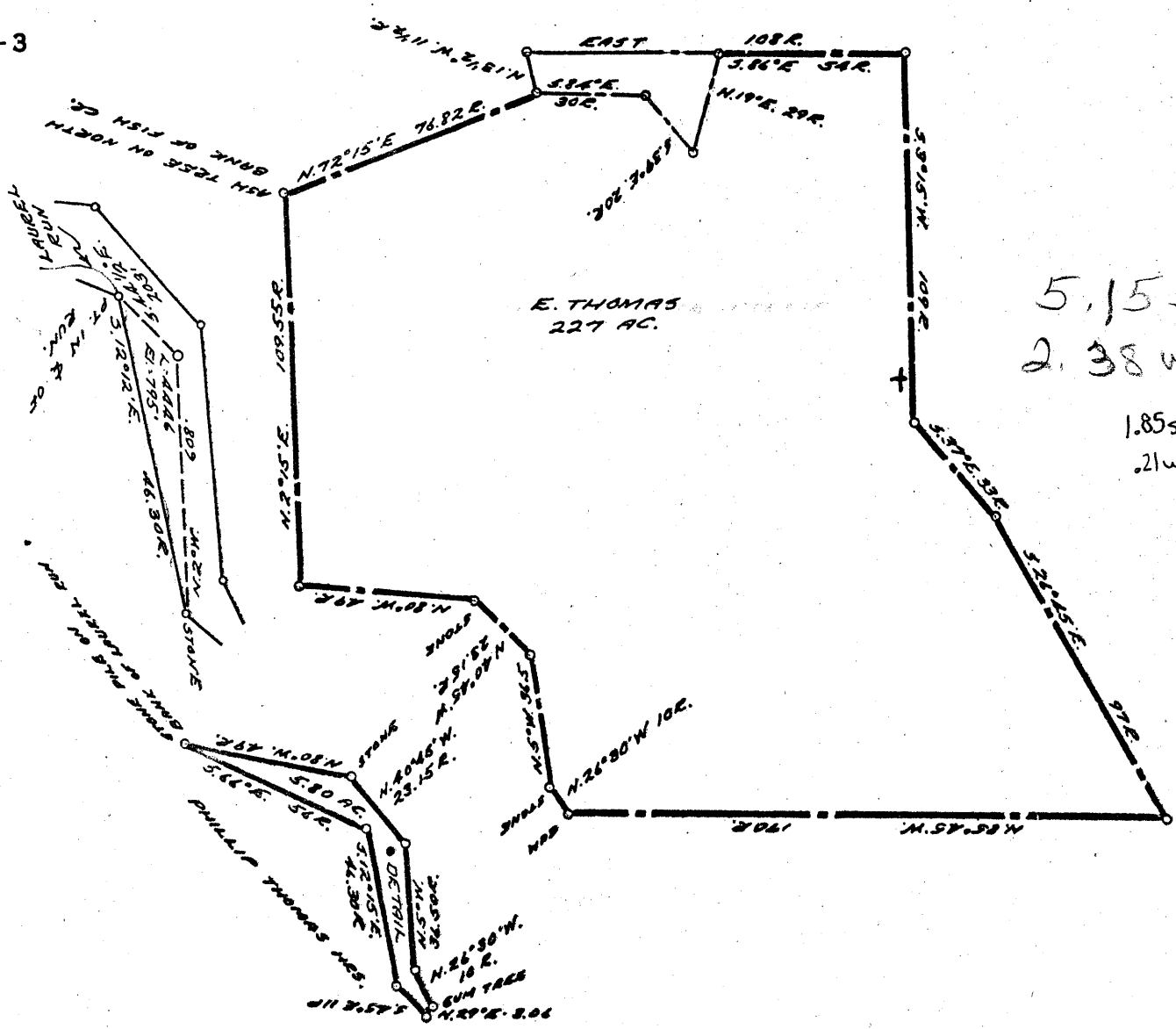


LATITUDE 39° 50' 30" P

LONGITUDE 80° 35'

10316608



COAL OWNED BY REDRILL ✓

NEW LOCATION.....

DRILL DEEPER.....

ABANDONMENT.....

COMPANY THE MANUFACTURERS LIGHT & HEAT

ADDRESS 800 UNION TRUST BLDG., PGH. PENNA.

FARM E. THOMAS

TRACT _____ ACRES 227 LEASE NO. 26438

WELL (FARM) No. 1 SERIAL No. 4446

ELEVATION (SPIRIT LEVEL) 795'

QUADRANGLE CAMERON - SC

COUNTY MARSHALL DISTRICT LIBERTY

ENGINEER Thomas E. Virgin M.

ENGINEER'S REGISTRATION No. 1503

FILE No. _____ DRAWING No. Y-15-590

DATE 31 MAY, 1957 SCALE 1" = 800'

STATE OF WEST VIRGINIA
DEPARTMENT OF MINES
OIL AND GAS DIVISION
CHARLESTON

WELL LOCATION MAP

FILE No. MARS-311-REDRILL

+ DENOTES LOCATION OF WELL ON UNITED STATES TOPOGRAPHIC MAPS, SCALE 1 TO 62,500. LATITUDE AND LONGITUDE LINES BEING REPRESENTED BY BORDER LINES AS SHOWN.

- DENOTES ONE INCH SPACES ON BORDER LINE OF ORIGINAL TRACING.

9-0 25



STATE OF WEST VIRGINIA
DEPARTMENT OF MINES
OIL AND GAS DIVISION

Quadrangle Cameron

WELL RECORD

Permit No. MARS-311-R

Oil or Gas Well Storage GAS
(KIND)

Company The Manufacturers Light & Heat Company
Address 800 Union Trust Building, Pgh. 19, Penna.
Farm E. Thomas Acres 227
Location (waters) _____
Well No. 4446 Elev. 795'
District Liberty County Marshall
The surface of tract is owned in fee by _____
Address _____
Mineral rights are owned by _____
Address _____
Drilling commenced September 10, 1957
Drilling completed November 21, 1957
Date Shot _____ From _____ To _____
With _____
Open Flow _____ /10ths Water in _____ Inch
_____ /10ths Merc. in _____ Inch
Volume _____ Cu. Ft.
Rock Pressure _____ lbs. _____ hrs.
Oil _____ bbls., 1st 24 hrs.
Fresh water _____ feet _____ feet
Salt water _____ feet _____ feet

Casing and Tubing	Used in Drilling	Left in Well	Packers
Size			
16			Kind of Packer
18			
10"		154'	Size of
8 1/4"		1057'	
8 3/8" x 7"		1556'	Depth set
5 3/16			
3			Perf. top
2			Perf. bottom
Liners Used			Perf. top
			Perf. bottom

CASING CEMENTED	SIZE	No. Ft.	Date
COAL WAS ENCOUNTERED AT			
	FEET	INCHES	
	FEET	INCHES	
	FEET	INCHES	

Formation	Color	Hardness THICKNESS	Top	Bottom	Oil, Gas or Water	Depth Found	Remarks
Schlumberger	Well Survey						
Pittsburgh Coal		7'	536'	543'			All pipe measured over threads Run 154' of 10-3/4" Casing Sm. Gr. H-32# on a steel shoe and cemented with 125 bags cement, 14.2 lbs. per gal., good return of cement at surface. Run 1057' of 8-5/8" Casing Sm. Gr. J-24# on a steel shoe and cemented with 300 bags cement, 14.8 lbs. per gallon, no return of cement at surface. Run 1566' of 7" Casing Sm. Gr. J-20# on a steel shoe set a 1547' and cemented with 225 bags cement, 15.2 per gallon. Enough cement returned to finish filling to surface between the 8 and 10" casing. Well cleaned out to a depth of 1937' and cemented back to 1556' with 158 bags cement. Cemented with a Dump Bailer.
Maxton Sand		7'	1548'	1555'			
Total Depth				1556'			

23456789101112131415161718
DEC 1957
REC'D
WEST