

COAL OWNED BY B. DEBMAN
 RECONDITION FOR STORAGE

NEW LOCATION.....
 DRILL DEEPER.....
 ABANDONMENT.....

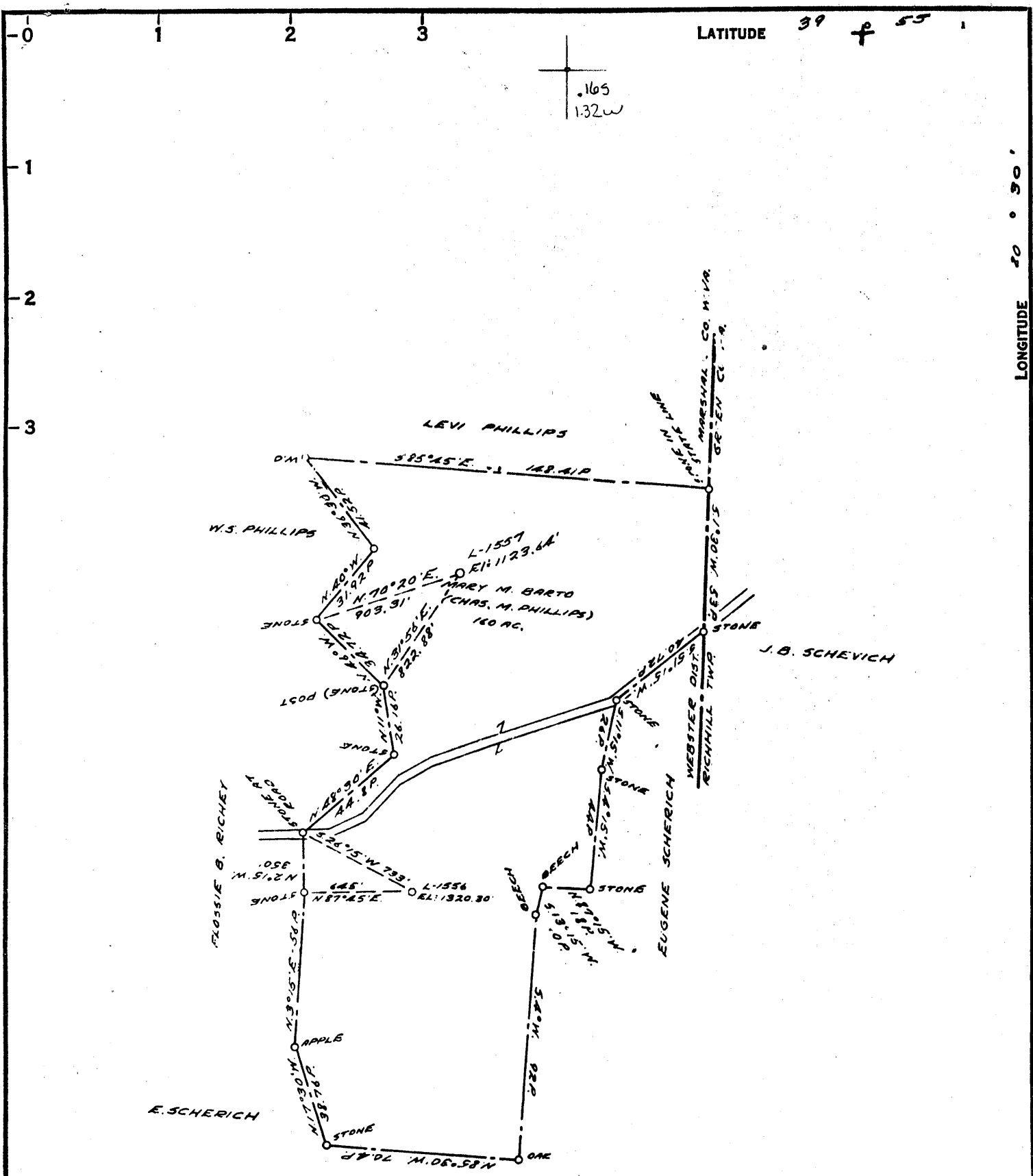
COMPANY THE MANUFACTURERS LIGHT & HEAT
 ADDRESS 800 UNION TRUST BLDG. PGH. PA.
 FARM MARY M. BARTO
 TRACT _____ ACRES 160 LEASE No. 23071
 WELL (FARM) No. 2 SERIAL No. 1557
 ELEVATION (SPIRIT LEVEL) 1123.6A'
 QUADRANGLE CAMERON - EC
 COUNTY MARSHALL DISTRICT WEBSTER
 ENGINEER A. Stretton M.
 ENGINEER'S REGISTRATION No. 9442
 FILE No. _____ DRAWING No. Y-15-701
 DATE 6 FEB. 1958 SCALE 1" = 800'

STATE OF WEST VIRGINIA
 DEPARTMENT OF MINES
 OIL AND GAS DIVISION
 CHARLESTON

WELL LOCATION MAP

FILE No. MARS-318

+ DENOTES LOCATION OF WELL ON UNITED STATES TOPOGRAPHIC MAPS, SCALE 1 TO 62,500, LATITUDE AND LONGITUDE LINES BEING REPRESENTED BY BORDER LINES AS SHOWN.
 - DENOTES ONE INCH SPACES ON BORDER LINE OF ORIGINAL TRACING.



COAL OWNED BY _____
 RECONDITION FOR STORAGE

NEW LOCATION.....
 DRILL DEEPER.....
 ABANDONMENT..... issued 7-15-70

COMPANY THE MANUFACTURERS LIGHT & HEAT
 ADDRESS 800 UNION TRUST BLDG. PGH. PA.
 FARM C.M. Phillips (MARY M. BARTO)
 TRACT _____ ACRES 160 LEASE NO. 23071
 WELL (FARM) NO. 2 SERIAL NO. 1557
 ELEVATION (SPIRIT LEVEL) 1123.64'
 QUADRANGLE CAMERON EC
 COUNTY MARSHALL DISTRICT WEBSTER
 ENGINEER A. G. Streater M.
 ENGINEER'S REGISTRATION NO. 9442
 FILE NO. _____ DRAWING NO. Y-15-701
 DATE 6 FEB. 1958 SCALE 1" = 800'

STATE OF WEST VIRGINIA
 DEPARTMENT OF MINES
 OIL AND GAS DIVISION
 CHARLESTON

WELL LOCATION MAP

FILE NO. MARS-318-Red-P

+ DENOTES LOCATION OF WELL ON UNITED STATES TOPOGRAPHIC MAPS. SCALE 1 TO 62,500. LATITUDE AND LONGITUDE LINES BEING REPRESENTED BY BORDER LINES AS SHOWN.
 - DENOTES ONE INCH SPACES ON BORDER LINE OF ORIGINAL TRACING.