

COAL OWNED BY _____
 RECORD FOR STORAGE _____

NEW LOCATION.....

DRILL DEEPER.....

ABANDONMENT.....

30191

CSP 9/1

COMPANY THE MANUFACTURERS LIGHT & HEAT CO.

ADDRESS 300 UNION TRUST BLDG. PSH. PA.

FARM CATHERINE FRY

TRACT _____ ACRES 130 LEASE No. 6835

WELL (FARM) No. 2 SERIAL No. 2606

ELEVATION (SPIRIT LEVEL) 885'

QUADRANGLE CAMERON - 5C

COUNTY MARSHALL DISTRICT LIBERTY

ENGINEER Thomas C. Virgin M.

ENGINEER'S REGISTRATION No. 1503

FILE No. _____ DRAWING No. Y-15-770

DATE 9 MAY 1958 SCALE 1" = 800'

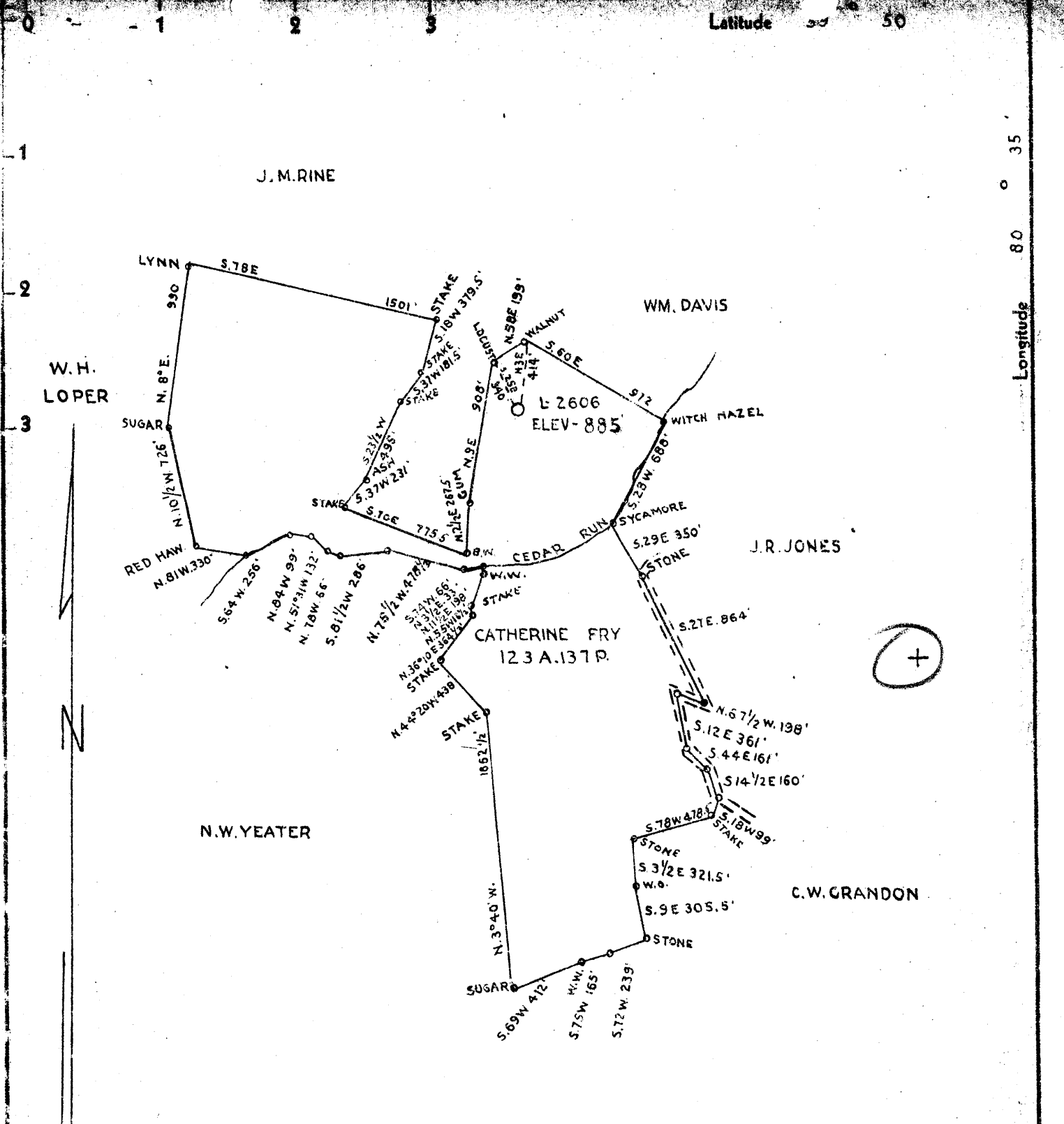
STATE OF WEST VIRGINIA
 DEPARTMENT OF MINES
 OIL AND GAS DIVISION
 CHARLESTON

WELL LOCATION MAP

FILE No. MARS-324-REDRILL

+ DENOTES LOCATION OF WELL ON UNITED STATES TOPOGRAPHIC MAPS. SCALE 1 TO 62,500. LATITUDE AND LONGITUDE LINES BEING REPRESENTED BY BORDER LINES AS SHOWN.

- DENOTES ONE INCH SPACES ON BORDER LINE OF ORIGINAL TRACING.



COAL OWNED BY BELTON FUEL CO.

New Location:
 Drill Deeper:
 Abandonment:

NOTE: ALL SANDS BELOW MAXON TO BE PLUGGED AND ABANDONED

Company THE MANUFACTURERS LIGHT AND HEAT CO.
 Address 800 UNION TRUST BLD'G. PITTSBURGH PA.
 Farm CATHERINE FRY
 Tract _____ Acres 123A137P Lease No. 6835
 Well (Farm) No. 2 Serial No. 2606
 Elevation (Spirit Level) 885'
 Quadrangle CAMERON S.E.
 County MARSHALL District LIBERTY
 Engineer *J. L. M...*
 Engineer's Registration No. _____
 File No. Q-25-29 W.B.K. 24 Drawing No. Y-10-875
 Date JANUARY-11-1943 Scale 1" = 800'

STATE OF WEST VIRGINIA
 DEPARTMENT OF MINES
 OIL AND GAS DIVISION
 CHARLESTON

WELL LOCATION MAP

File No. MARS-191-A-324

+ Denotes location of well on United States Topographic Maps, scale 1 to 62,500, latitude and longitude lines being represented by border lines as shown
 - Denotes one inch spaces on border line of original tracing.

4.845
 0.86W 0.88W
 4191

✓ 3102-1343

50



STATE OF WEST VIRGINIA
DEPARTMENT OF MINES
OIL AND GAS DIVISION

Quadrangle Cameron

WELL RECORD

Permit No. MARS-324-Redrill

Oil or Gas Well storage GAS
(KIND)

Company The Manufacturers Light and Heat Company
Address 800 Union Trust Building, Pgh. 13, Penna.
Farm Catherine Fry Acres 130
Location (waters) _____
Well No. 2606 Elev. 885'
District Liberty County Marshall
The surface of tract is owned in fee by _____
Address _____
Mineral rights are owned by _____
Address _____
Drilling commenced July 7, 1958
Drilling completed August 26, 1958
Date Shot _____ From _____ To _____
With _____
Open Flow _____ /10ths Water in _____ Inch
_____ /10ths Merc. in _____ Inch
Volume _____ Cu. Ft.
Rock Pressure 140 lbs. 72 hrs.
Oil _____ bbls., 1st 24 hrs.
Fresh water _____ feet
Salt water _____ feet

Casing and Tubing	Used in Drilling	Left in Well	Packers
Size			Kind of Packer
16			
13			
10"	202	202	Size of
8 1/4"	905	1300	
7"	1843	1843	Depth set
5 3/16			
3			Perf. top
2			Perf. bottom
Liners Used			Perf. top
			Perf. bottom

CASING CEMENTED _____ SIZE _____ No. Ft. _____ Date _____

COAL WAS ENCOUNTERED AT _____ FEET _____ INCHES
_____ FEET _____ INCHES _____ FEET _____ INCHES
_____ FEET _____ INCHES _____ FEET _____ INCHES

Formation	Color	Hardness of Salt THICKNESS	Top	Bottom	Oil, Gas or Water	Depth Found	Remarks
Schlumberger Well Survey							
-Pittsburgh Coal		8	788	796	All casing measured over threads Run 202' of 10 3/4" Casing, SM.H. 32.75# on a steel shoe. Cemented with 150 bags of cement, 15.6 lbs. per gallon. Good return of cement at the surface. Run 905' of 8 5/8" Casing, SM. J. 24# and connected it to 395' of original 8 1/4" casing with a steel die nipple. Cemented with 250 bags of cement, 15.5 lbs. per gallon. Good return of cement at the surface. Run 1843' of 7" Casing, SM.J. 20# on a steel shoe set a 1829'. Cemented with 200 bags of cement, 15.5 lbs per gallon. Good return of cement at the surface. Plugged hole hole back to a final depth 1878' with 80 bags of neat cement.		
✓ Upper Maxton Sand		10	1808	1818			
✓ Lower Maxton Sand		16	1859	1875			
Gas at				1874			
✓ Top Big Lime			1902				
✓ Bottom Big Injun Sand				2177			
Total Depth				1878			
7" Shoe set at				1829			

STATE OF WEST VIRGINIA
DEPARTMENT OF MINES
OIL AND GAS DIVISION

239

191-A → 324

WELL RECORD

Permit No. Well drilled in 1920

Oil or Gas Well Gas
(KIND)

Company **The Mfrs. Light & Heat Company**
 Address **800 Union Trust Bldg., Pittsburgh, Pa.**
 Farm **Catherine & C. S. Fry** Acres **130**
 Location (waters) **2 - 2606** Elev. **885 ft.**
 Well No. **Liberty** County **Marshall**
 District **Mr James A Fry**
 The surface of tract is owned in fee by **Cameron, W. Va.**
 Address **The Mfrs Light & Heat Col,**
 Mineral rights are owned by **800 Union Trust Bldg., Pittsburgh, Pa.**
 Address **Pittsburgh, Pa.**
 Drilling commenced **10/11/20**
 Drilling completed **11/30/20**
 Date shot _____ Depth of shot _____
 Open Flow _____ /10ths Water in _____ Inch
 _____ 2/10ths Merc. in **6 5/8"** Inch
 Volume _____ Cu. Ft.
 Rock Pressure _____ lbs _____ hrs.
 Oil _____ bbls., 1st 24 hrs.
 Fresh water _____ feet _____ feet
 Salt water _____ feet _____ feet

Casing and Tubing	Used in Drilling	Left in Well	Packers
Size			
16			Kind of Packer
13			
10	200		Size of
8 1/4	1300	1300	
6 1/2	1950	1950	Depth set
5 3/16			
3			Perf. top
2			Perf. bottom
Liners Used			Perf. top
			Perf. bottom

CASING CEMENTED _____ SIZE _____ No. Ft. _____ Date _____
 COAL WAS ENCOUNTERED AT **700** FEET **60** INCHES
795 FEET **84** INCHES **1100** FEET **60** INCHES
 FEET INCHES FEET INCHES

Formation	Color	Hard or Soft	Top	Bottom	Oil, Gas or Water	Depth Found	Remarks
Clay			0	16			
Slate & Lime			16	460			
Sand			460	500			
Coal			500	505			
Lime			505	525			
Sand			525	550			
Slate & Lime			550	700			
Coal			700	705			
Lime & Slate			705	795			
Rock			795	802			
Pittsburgh Coal			795	802			
Lime & Slate			802	920			
Sand			920	935			
Slate & Lime			935	1300			
Sand			1300	1400			
Coal			1400	1405			
Slate			1405	1430			
Sand			1430	1480			
Slate			1480	1550			
Sand			1550	1600			
Slate			1600	1720			
Sand			1720	1760			
Slate			1760	1875			
Sand			1875	1945	Gas at 1890	and 1938 ft.	
Lime			1945	1955			
Sand			1955	2200	Gas at 2040	BF	
Slate & Shells			2200	2570			
Sand			2570	2585	Gas at 2755		
Slate			2585	2750			
50-Foot Sand			2750	2760			
Slate			2760	2765			
Stray			2765	2780			
Slate			2780	2795			
Gordon Sand			2795	2807	Gas 2795 to	2805	
Slate			2807	2840			
1/4th Sand			2840	2850			
Slate			2850	2874			
Total depth				2877			



Formation	Color	Hard or Soft	Top	Bottom	Oil, Gas or Water	Depth Found	Remarks

Date..... December 28th, 194..... 2

APPROVED..... THE MANUFACTURERS LIGHT & HEAT CO., Owner

By..... *Sam H. Fowler*
 Land Dept. (Title) Office Manager