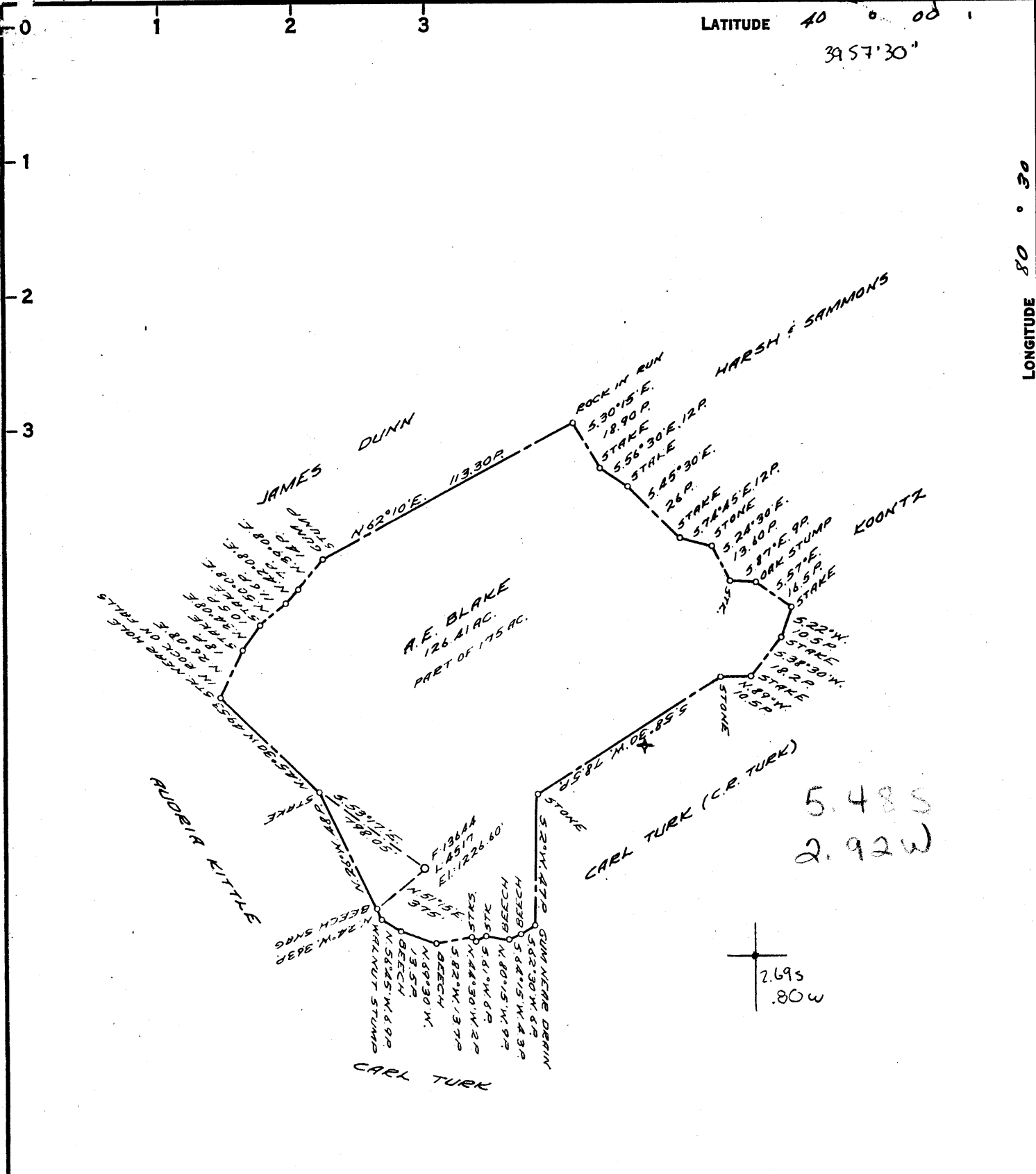


M

P



LATITUDE 40 0 00  
39 57' 30"

LONGITUDE 80 0 30

80 32' 30"

COAL OWNED BY \_\_\_\_\_  
 RECONDITION   
 NEW LOCATION.....  
 DRILL DEEPER.....  
 ABANDONMENT.....

See August 1936  
 O.G. Monthly Report  
 P. 13  
 for Permit 64  
 in Table 5

COMPANY THE MANUFACTURERS LIGHT & HEAT  
 ADDRESS 800 UNION TRUST BLDG. P64. PA.  
 FARM A.E. BLAKE  
 TRACT \_\_\_\_\_ ACRES 175 LEASE No. 23804  
 WELL (FARM) No. 1 SERIAL No. 4517  
 ELEVATION (SPIRIT LEVEL) 1226.60  
 QUADRANGLE CAMERON - NE  
 COUNTY MARSHALL DISTRICT WEBSTER  
 ENGINEER A. C. Stretton M.  
 ENGINEER'S REGISTRATION No. 9642  
 FILE No. \_\_\_\_\_ DRAWING No. Y-15-877  
 DATE 9 JAN. 1959 SCALE 1" = 800'

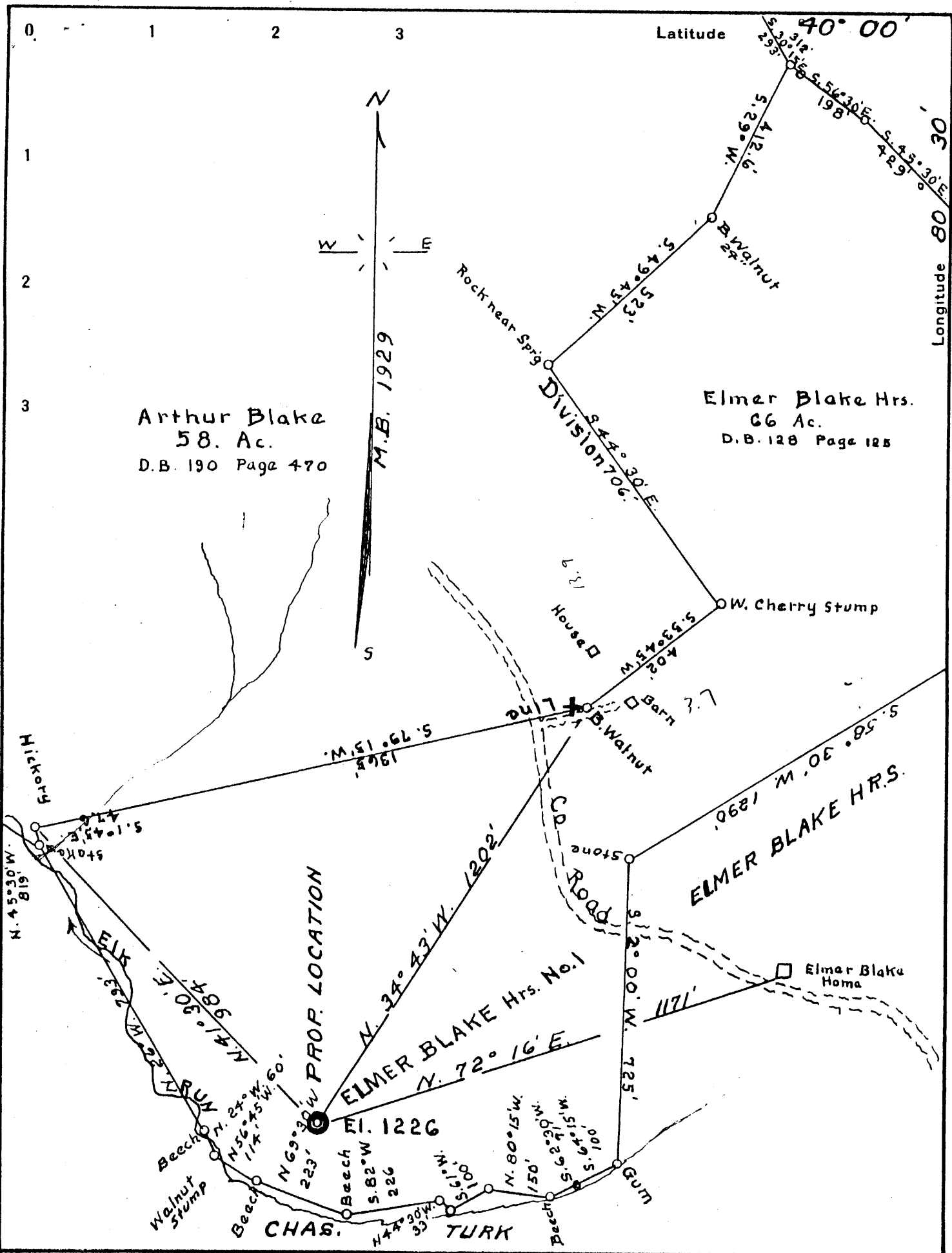
STATE OF WEST VIRGINIA  
 DEPARTMENT OF MINES  
 OIL AND GAS DIVISION  
 CHARLESTON

**WELL LOCATION MAP**

FILE No. Mars-336-R.

Was 051-64

+ DENOTES LOCATION OF WELL ON UNITED STATES TOPOGRAPHIC MAPS. SCALE 1 TO 62,500. LATITUDE AND LONGITUDE LINES BEING REPRESENTED BY BORDER LINES AS SHOWN.  
 - DENOTES ONE INCH SPACES ON BORDER LINE OF ORIGINAL TRACING.



Arthur Blake  
58. Ac.  
D.B. 190 Page 470

Elmer Blake Hrs.  
66 Ac.  
D.B. 128 Page 128

Company BURLEIGH WRIGHT  
 Address WIND RIDGE, PENN.  
 Farm ELMER BLAKE HRS.  
 Tract 1 Acres 66 Lease No. \_\_\_\_\_  
 Well (Farm) No. 1 Serial No. \_\_\_\_\_  
 Quadrangle CAMERON  
 County MARSHALL  
 District WEBSTER  
 Engineer Gordon W. Sammons  
 Engineer's Registration No. 509  
 File No. \_\_\_\_\_ Drawing No. \_\_\_\_\_  
 Date Aug. 7, 1936 Scale 1 inch = 300 Ft.

STATE OF WEST VIRGINIA  
 DEPARTMENT OF MINES  
 OIL AND GAS DIVISION  
 CHARLESTON

WELL LOCATION MAP  
 FILE NO. MARS-64

+ Denotes location of well on United States  
 Topographic Maps, scale 1 to 62,500, lat-  
 itude and longitude lines being represented  
 by border lines as shown.

- Denotes one inch spaces on border line  
 of original tracing.



STATE OF WEST VIRGINIA  
DEPARTMENT OF MINES  
OIL AND GAS DIVISION

Quadrangle Cameron

**WELL RECORD**

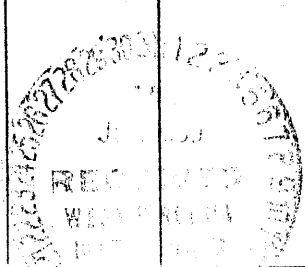
Permit No. MARS-336-R

Oil or Gas Well Gas

*Storage*  
Gas  
(KIND)

Company <u>The Manufacturers Light and Heat Company</u>	Casing and Tubing	Used in Drilling	Left in Well	Packers
Address <u>800 Union Trust Building, Pgh. 19, Penna.</u>	Size			
Farm <u>A. E. Blake</u> Acres <u>175</u>	16			Kind of Packer
Location (waters)	18"	63'11"	63'11"	Anchor
Well No. <u>4517</u> Elev. <u>1226.60</u>	10			Size of <u>6 5/8" x 4 1/2"</u>
District <u>Webster</u> County <u>Marshall</u>	8 1/4"	785'	1121	Depth set <u>1870'</u>
The surface of tract is owned in fee by	7"	1586'	1674	
Address	5 3/16"			
Mineral rights are owned by	4"	1919'	1919'	Perf. top
Address	2			Perf. bottom
Drilling commenced <u>February 9, 1959</u>	Liners Used			Perf. top
Drilling completed <u>June 26, 1959</u>				Perf. bottom
Date Shot From To				
With				
Open Flow /10ths Water in Inch	CASING CEMENTED SIZE No. Ft. Date			
/10ths Merc. in Inch				
Volume <u>Nil</u> Cu. Ft.	COAL WAS ENCOUNTERED AT FEET INCHES			
Rock Pressure <u>1</u> lbs. <u>72</u> hrs.	FEET INCHES FEET INCHES			
Oil bbls., 1st 24 hrs.	FEET INCHES FEET INCHES			
Fresh water feet feet				
Salt water feet feet				

Formation	Color	Harder Soft THICKNESS	Top	Bottom	Oil, Gas or Water	Depth Found	Remarks
Schlumberger	Gamma Ray	Survey			Abandoned well redrilled for Storage		
Pittsburgh Coal		4	712	716	Elevation - 1226.60 (Original ground level)		
Big Dunkard		23	1247	1270	Depth Datum - Derrick Floor - same as original ground level.		
Sand		21	1432	1453	13 3/8" (43#, H-40) Csg. Pt. - 63'11"		
Sand		29	1499	1528	Cemented with 60 bags 2/13/59		
Sand		33	1543	1576	Possible water - 1673-1675' (G.R.N. log)		
3rd. Salt Sand		81	1633	1714	1919' - original shoulder for 5 1/2" casing		
Maxton Sand		20	1744	1764	5" hole from 1919' to Total Depth		
Big Lime		15	1803	1818	Possible productive zones 188' to 1928'		
Big Injun		232	1818	2050	Gas possibility 1888' to 1892' G.R.N. and M. L. L.		
Cleaned out to depth of 2985' and plugged back to 1958' with cement plug.					Water possibility 1911' (G.R.N. Log) to 1919'		
TOTAL DEPTH				1958	4 1/2" (12.6#, J-55) Tubing - 1919' set on shoulder.		
					6 5/8" x 4 1/2" Anchor Packer at 1870'. Annulus above packer filled to surface with Aquagel.		
					8 5/8" (24#, J-55) Casing - 785' Screwed on and cemented with 200 bags 4/24/59 Bottom of original 8" casing at 1121' (Schlumberger)		
					7" (20#, J-55) Casing - 1586' Screwed on and cemented with 175 bags 5/14/59 Bottom of original 7" - 1674' (Schlumberger)		
6/29/59 Well filled up 250' with salty water after being shut in for 150 hrs.				1803 1227 576			



*Storage*

STATE OF WEST VIRGINIA  
DEPARTMENT OF MINES  
OIL AND GAS DIVISION

## WELL RECORD

Permit No. Mars-64

Oil or Gas Well DRY  
(KIND)

Company..... <u>Burleigh Wright</u>	Casing and Tubing	Used in Drilling	Left in Well	Packers
Address..... <u>Wind Ridge, Pa.</u>	Size			
Farm..... <u>Elmer Blake Hrs.</u> Acres..... <u>66</u>	16.....			Kind of Packer.....
Location (waters).....	18.....			Size of.....
Well No..... <u>1</u> Elev..... <u>1226</u>	10.....	<u>382</u>		Depth set.....
District..... <u>Webster</u> County..... <u>Marshall</u>	8 1/4.....	<u>1119</u>		Perf. top.....
The surface of tract is owned in fee by..... <u>Blake Hoirs</u>	6%.....	<u>1779</u>		Perf. bottom.....
Address..... <u>RFD #3-Cameron</u>	5 3/16.....	<u>1920</u>		Perf. top.....
Mineral rights are owned by..... <u>Sans</u>	3.....			Perf. bottom.....
Address.....	2.....			
Drilling commenced..... <u>September 9, 1936</u>	Liners Used.....			
Drilling completed..... <u>December 15, 1936</u>				
Date shot..... Depth of shot.....				
Open Flow /10ths Water in..... Inch				
/10ths Merc. in..... Inch				
Volume..... Cu. Ft.	CASING CEMENTED..... SIZE..... No. Ft..... Date			
Rock Pressure..... lbs..... hrs.	COAL WAS ENCOUNTERED AT..... <u>735</u> FEET..... <u>84</u> INCHES			
Oil..... bbls., 1st 24 hrs.	..... FEET..... INCHES..... FEET..... INCHES			
Fresh water..... feet..... feet	..... FEET..... INCHES..... FEET..... INCHES			
Salt water..... <u>1558</u> feet..... <u>1675</u> feet				

Formation	Color	Hard or Soft	Top	Bottom	Oil, Gas or Water	Depth Found	Remarks
COAL			735	742			
SALT SAND			1580	1757			
BIG INJUN			1815	2048			
Lime and shale			2048	3000			
Total Depth				3000			