

0 1 2 3

LATITUDE 10 0 00

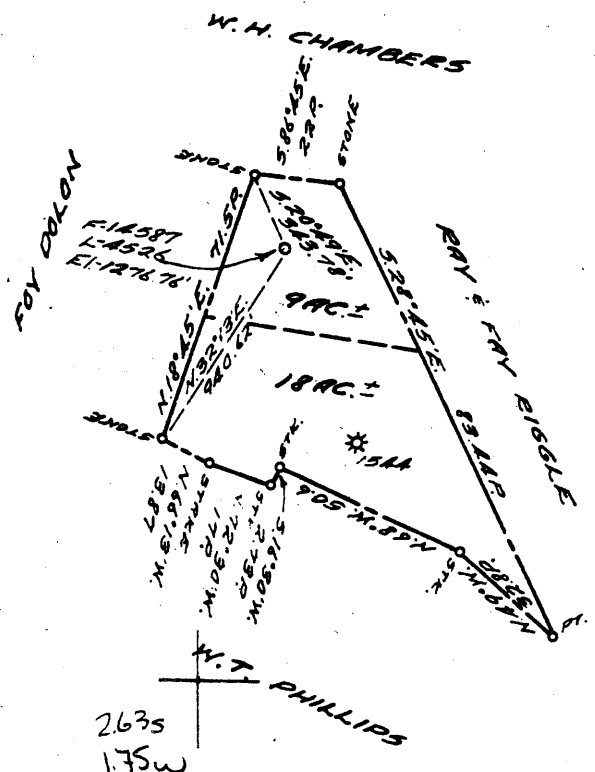
39° 57' 30"

1

2

3

LONGITUDE 80 0 30



5.51S  
1.84W  
+

COAL OWNED BY \_\_\_\_\_  
 RECONDITION   
 NEW LOCATION.....   
 DRILL DEEPER.....   
 ABANDONMENT.....

0-25-10

COMPANY THE MANUFACTURERS LIGHT & HEAT  
 ADDRESS 800 UNION TRUST BLDG. PSH. PA.  
 FARM RAY & FAY RIGGLE  
 TRACT \_\_\_\_\_ ACRES 140 LEASE No. 19926  
 WELL (FARM) No. 1 SERIAL No. 4526  
 ELEVATION (SPIRIT LEVEL) 1276.76'  
 QUADRANGLE CAMERON NE  
 COUNTY MARSHALL DISTRICT WEBSTER  
 ENGINEER J. C. Treator M.  
 ENGINEER'S REGISTRATION No. 9442  
 FILE No. \_\_\_\_\_ DRAWING No. Y-15-879  
 DATE 19 JAN. 1959 SCALE 1" = 800'

STATE OF WEST VIRGINIA  
 DEPARTMENT OF MINES  
 OIL AND GAS DIVISION  
 CHARLESTON

WELL LOCATION MAP

FILE No. Mars-339-Redrill

+ DENOTES LOCATION OF WELL ON UNITED STATES TOPOGRAPHIC MAPS, SCALE 1 TO 62,500. LATITUDE AND LONGITUDE LINES BEING REPRESENTED BY BORDER LINES AS SHOWN.  
 — DENOTES ONE INCH SPACES ON BORDER LINE OF ORIGINAL TRACING.

9-0 22



STATE OF WEST VIRGINIA  
DEPARTMENT OF MINES  
OIL AND GAS DIVISION

CAMERON

Quadrangle \_\_\_\_\_

WELL RECORD

Permit No. MARS-339-R

Oil or Gas Well Storage  
(KIND)

Company The Manufacturers Light and Heat Co.  
Address 800 Union Trust Bldg., Pittsburgh 19, Pa.  
Farm Ray and Fay Riggle Acres 140  
Location (waters) \_\_\_\_\_  
Well No. L-4526 Elev. 1276.76'  
District Webster County Marshall  
The surface of tract is owned in fee by \_\_\_\_\_  
Address \_\_\_\_\_  
Mineral rights are owned by \_\_\_\_\_  
Address \_\_\_\_\_

Drilling commenced February, 1959  
Drilling completed January 21, 1961  
Date Shot \_\_\_\_\_ From \_\_\_\_\_ To \_\_\_\_\_  
With \_\_\_\_\_

Open Flow \_\_\_\_\_ /10ths Water in \_\_\_\_\_ Inch  
\_\_\_\_\_ /10ths Merc. in \_\_\_\_\_ Inch  
Volume 3,340,000 Cu. Ft.  
Rock Pressure 730 lbs. 72 hrs.  
Oil \_\_\_\_\_ bbls., 1st 24 hrs.  
Fresh water \_\_\_\_\_ feet \_\_\_\_\_ feet  
Salt water \_\_\_\_\_ feet \_\_\_\_\_ feet

Casing and Tubing	Used in Drilling	Left in Well	Packers
Size			
16			Kind of Packer _____
18 3/8"	86'7"	86'7"	
10 3/4"	796'3"	796'3"	Size of _____
8 5/8"	1389'3"	1389'3"	
6 7/7"	1854'3"	1854'3"	Depth set _____
5 3/16			
3			Perf. top _____
2			Perf. bottom _____
Liners Used			Perf. top _____
			Perf. bottom _____

CASING CEMENTED \_\_\_\_\_ SIZE \_\_\_\_\_ No. Ft. \_\_\_\_\_ Date \_\_\_\_\_

COAL WAS ENCOUNTERED AT 740 FEET \_\_\_\_\_ INCHES  
\_\_\_\_\_ FEET \_\_\_\_\_ INCHES \_\_\_\_\_ FEET \_\_\_\_\_ INCHES  
\_\_\_\_\_ FEET \_\_\_\_\_ INCHES \_\_\_\_\_ FEET \_\_\_\_\_ INCHES

Formation	Color	Hard or Soft	Top	Bottom	Oil, Gas or Water	Depth Found	Remarks
		THICKNESS					
✓ Pittsburgh Coal		5	740	745			
Sand		22	838	860			
Sand		30	1200	1230			
✓ Gas Sand		53	1398	1451			
✓ 3rd Salt Sand		62	1647	1709			
Maxton Sand		67	1725	1792			
Big Injun			1848				
Redrilled to a depth of 1970'					Pay Zones determined from Schlumberger Surveys		
TOTAL DEPTH				1970	1st Pay - 1917 to 1922		
					2nd Pay - 1927 to 1946		
					3rd Pay - 1948 to 1956		

1848  
1277  
571