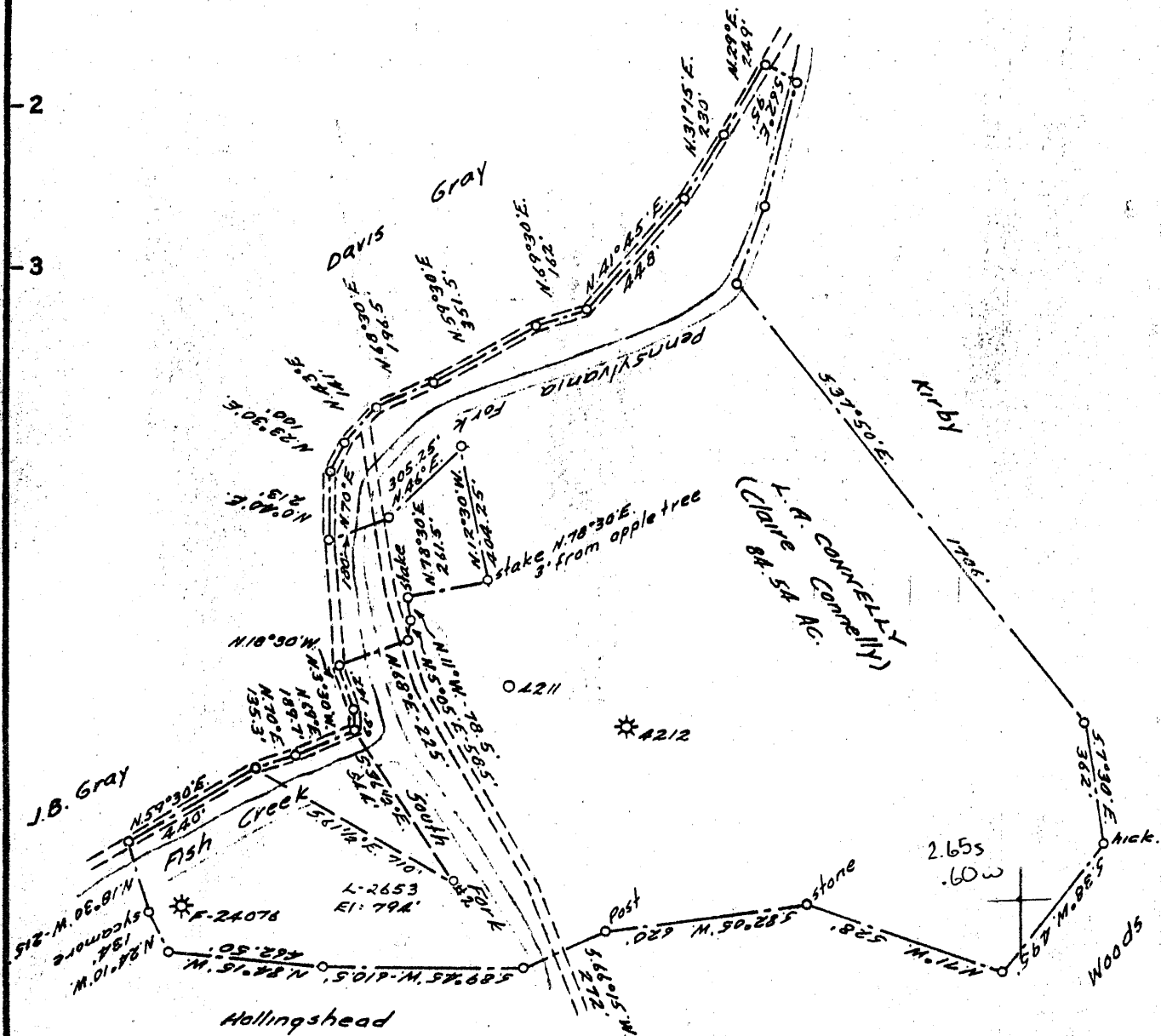


LATITUDE 39° 47' 30"

LONGITUDE 80° 35'



COAL OWNED BY \_\_\_\_\_  
RECONDITION

NEW LOCATION...

DRILL DEEPER...

ABANDONMENT...  Issued 1-21-71

0-25-29

COMPANY THE MANUFACTURERS LIGHT & HEAT  
 ADDRESS 800 UNION TRUST BLDG. PCH. PA.  
 FARM L. A. CONNELLY  
 TRACT \_\_\_\_\_ ACRES 85 LEASE No. 26958  
 WELL (FARM) No. 2 SERIAL No. 2653  
 ELEVATION (SPIRIT-LEVEL) 792'  
 QUADRANGLE CAMERON 5C  
 COUNTY MARSHALL DISTRICT LIBERTY  
 ENGINEER Thomas E. Virgin M.  
 ENGINEER'S REGISTRATION No. 1503  
 FILE No. \_\_\_\_\_ DRAWING No. Y-15-908  
 DATE 11 MAR. 59 SCALE 1" = 500'

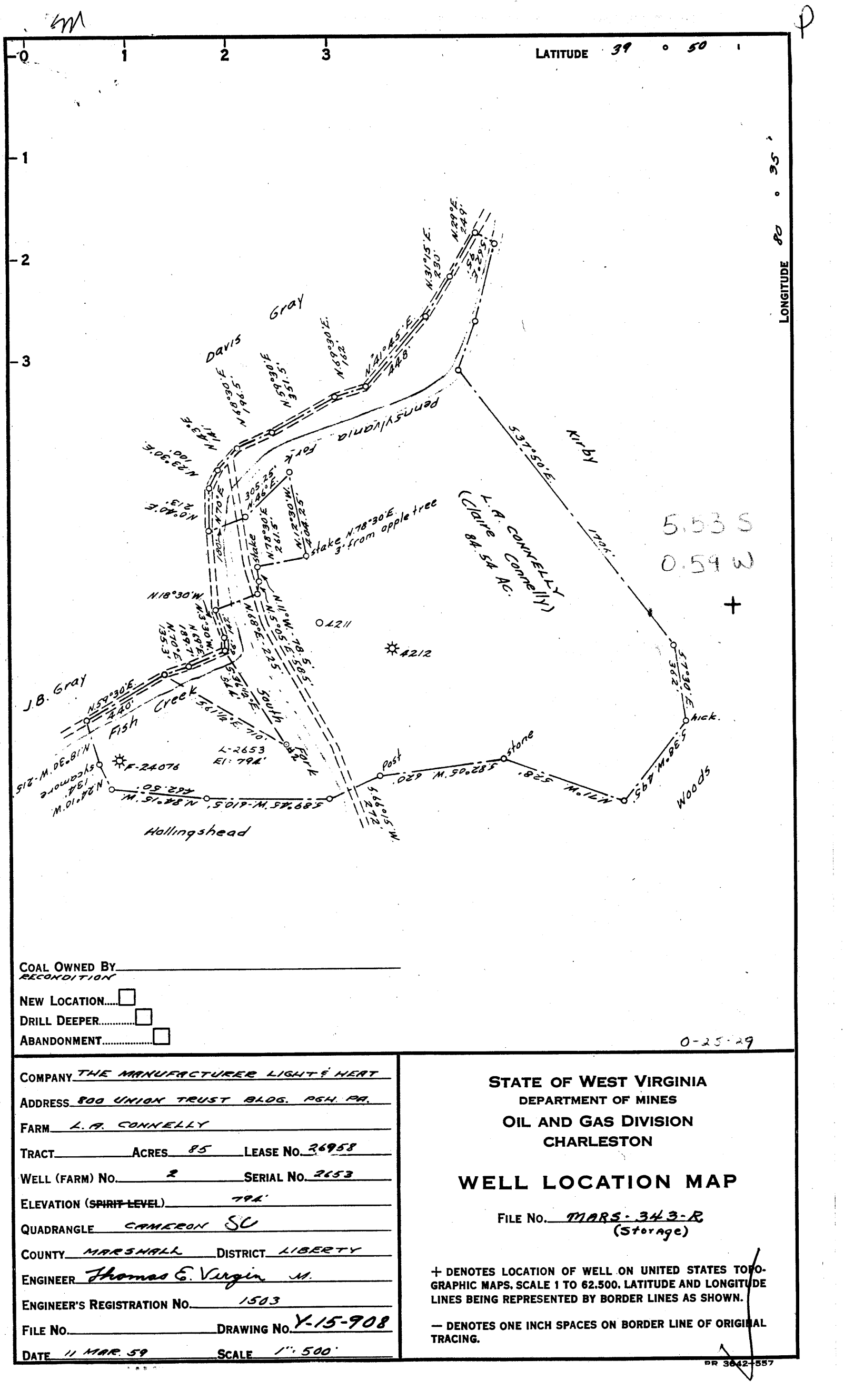
STATE OF WEST VIRGINIA  
 DEPARTMENT OF MINES  
 OIL AND GAS DIVISION  
 CHARLESTON

WELL LOCATION MAP

FILE No. MARS-343-R-P  
 (Storage)

+ DENOTES LOCATION OF WELL ON UNITED STATES TOPOGRAPHIC MAPS. SCALE 1 TO 62,500. LATITUDE AND LONGITUDE LINES BEING REPRESENTED BY BORDER LINES AS SHOWN.

- DENOTES ONE INCH SPACES ON BORDER LINE OF ORIGINAL TRACING.



COAL OWNED BY \_\_\_\_\_  
 RECONDITION \_\_\_\_\_

NEW LOCATION.....

DRILL DEEPER.....

ABANDONMENT.....

0-25-29

COMPANY THE MANUFACTURER LIGHT & HEAT

ADDRESS 800 UNION TRUST BLDG. P64. PA.

FARM L. A. CONNELLY

TRACT \_\_\_\_\_ ACRES 85 LEASE No. 26958

WELL (FARM) No. 2 SERIAL No. 2653

ELEVATION (SPIRIT LEVEL) 794'

QUADRANGLE CAMERON SU

COUNTY MARSHALL DISTRICT LIBERTY

ENGINEER Thomas E. Virgin M.

ENGINEER'S REGISTRATION No. 1503

FILE No. \_\_\_\_\_ DRAWING No. Y-15-908

DATE 11 MAR. 59 SCALE 1" = 500'

STATE OF WEST VIRGINIA  
 DEPARTMENT OF MINES  
 OIL AND GAS DIVISION  
 CHARLESTON

**WELL LOCATION MAP**

FILE No. MARS-343-R  
 (Storage)

+ DENOTES LOCATION OF WELL ON UNITED STATES TOPOGRAPHIC MAPS, SCALE 1 TO 62,500, LATITUDE AND LONGITUDE LINES BEING REPRESENTED BY BORDER LINES AS SHOWN.

- DENOTES ONE INCH SPACES ON BORDER LINE OF ORIGINAL TRACING.



STATE OF WEST VIRGINIA  
DEPARTMENT OF MINES  
OIL AND GAS DIVISION

Quadrangle Cameron

WELL RECORD

Permit No. MARS-343-R

Oil or Gas Well Gas  
(KIND)

Company <u>The Manufacturers Light and Heat Company</u>	Casing and Tubing	Used in Drilling	Left in Well	Packers
Address <u>800 Union Trust Building, Pgh. 19, Penna.</u>	16" Conductor	22	22	Kind of Packer
Farm <u>L. A. Connelly</u> <u>Claire Connelly</u> Acres <u>85</u>	18			
Location (waters)	10"	290	290	Size of
Well No. <u>2653</u> Elev. <u>794'</u>	8 1/4"	618	618	Depth set
District <u>Liberty</u> County <u>Marshall</u>	5 9/16"	1106	1106	
The surface of tract is owned in fee by	2 1/2"	1635	1635	Perf. top
Address	2			Perf. bottom
Mineral rights are owned by	Liners Used			Perf. top
Address				Perf. bottom
Drilling commenced <u>March 11, 1959</u>				
Drilling completed <u>June 8, 1959</u>				
Date Shot From To				
With				
Open Flow /10ths Water in Inch				
/10ths Merc. in Inch				
Volume Cu. Ft.				
Rock Pressure lbs. hrs.				
Oil bbls., 1st 24 hrs.				
Fresh water feet				
Salt water feet				

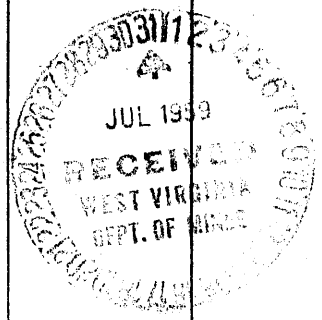
CASING CEMENTED SIZE No. Ft. Date

COAL WAS ENCOUNTERED AT FEET INCHES

FEET INCHES FEET INCHES

FEET INCHES FEET INCHES

Formation	Color	THICKNESS	Top	Bottom	Oil, Gas or Water	Depth Found	Remarks
Schlumberger Well Survey							
Pittsburgh Coal		6	492	498			All pipe measured over threads. Run 290' of 10 3/4" Casing. Sm.H. 32.75# on a steel shoe. Cemented with 75 bags of cement and 10 bags of Aquagel, 15 lbs per gallon. No return of cement at surface. Run 618' of 8 5/8" Casing, Sm. J. 24#. Cemented with 175 bags cement and 8 bags Aquagel, 14.5 lbs. per gallon Good Return of cement at surface. Filled outside the 10 3/4" casing from the surface with 126 bags cement and 3 bags Aquagel. Run 1106" of 7" Casing, Sm. J. 20# on a steel shoe set at 1098'. Old 7" Casing was left in hole from 1100' to 1602'. The old 7" was ripped from 1500' to 1520' and from 1570' to 1590'. Cemented with 270 bags of cement and 1/2 bag of Hydrotan, 14.3 lbs. per gallon. Good return of cement at surface. Run 1635' of 4 1/2" Tubing, Sm.J. 12.60# on a Halliburton Formation Packer Shoe set at 1615'. Cemented with 200 bags cement and 1/2 bag of Hydrotan. Good return of cement at the surface. Squeezed 300' of cement behind the old 7" Casing. Plugged hole back from 2005' to 1870' with 45 bags of cement by use of a cement bailer
Big Dunkard Sand		16	1026	1042			
Maxton Sand		12	1482	1494			
Lower Maxton Sand		12	1580	1592			
Big Lime			1610				
Big Injur				1894			
Total Depth				1870			
Old 7" Casing		502	1100	1602			
New 7" Casing				1098			
4 1/2" Shoe set at				1615			



Note: Upon start of reconditioning 50 bags of cement and 10 bags of Aquagel were run through 2" Tubing from 2240' to 2040' to shut off any gas from lower sands.

*Storage*