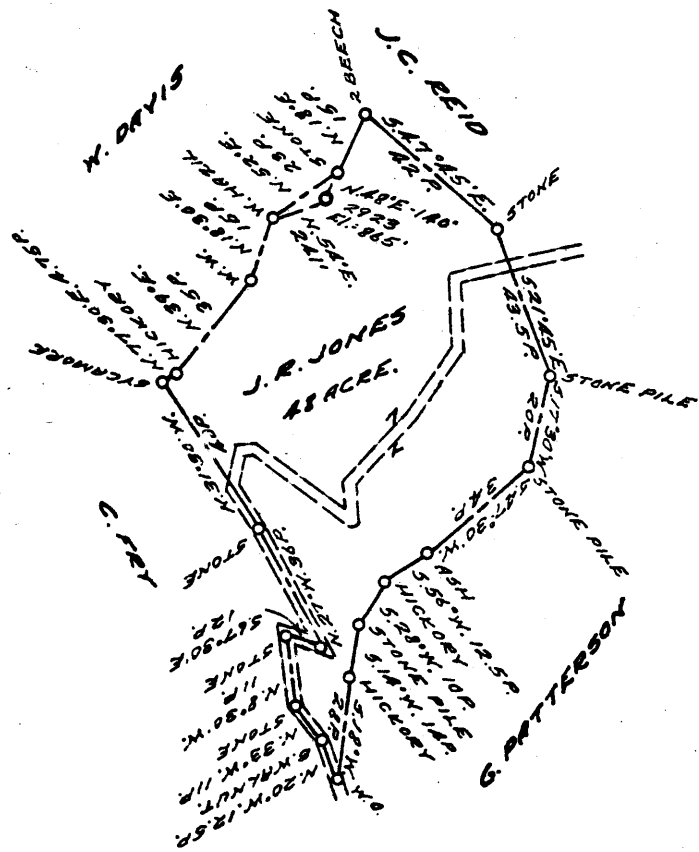


0 1 2 3

LATITUDE 39 ° 50 ' 1  
39°47'30"

1  
2  
3

LONGITUDE 80 ° 35



4.90S  
0.83W

+  
1915  
8.63W

COAL OWNED BY \_\_\_\_\_  
REDRILL & RECONDITION

NEW LOCATION.....

DRILL DEEPER.....

ABANDONMENT.....

0-25-29

COMPANY THE MANUFACTURERS LIGHT & HEAT

ADDRESS 800 UNION TRUST BLDG. PGH. PA.

FARM J. R. JONES

TRACT \_\_\_\_\_ ACRES 48 LEASE NO. 2217

WELL (FARM) NO. 1 SERIAL NO. 2923

ELEVATION (SPIRIT LEVEL) 865'

QUADRANGLE CAMERON SU

COUNTY MARSHALL DISTRICT LIBERTY

ENGINEER Thomas E. Virgin

ENGINEER'S REGISTRATION NO. 1503

FILE NO. \_\_\_\_\_ DRAWING NO. V-15-917

DATE 17 MAR. 59 SCALE 1" = 800'

STATE OF WEST VIRGINIA  
DEPARTMENT OF MINES  
OIL AND GAS DIVISION  
CHARLESTON

WELL LOCATION MAP

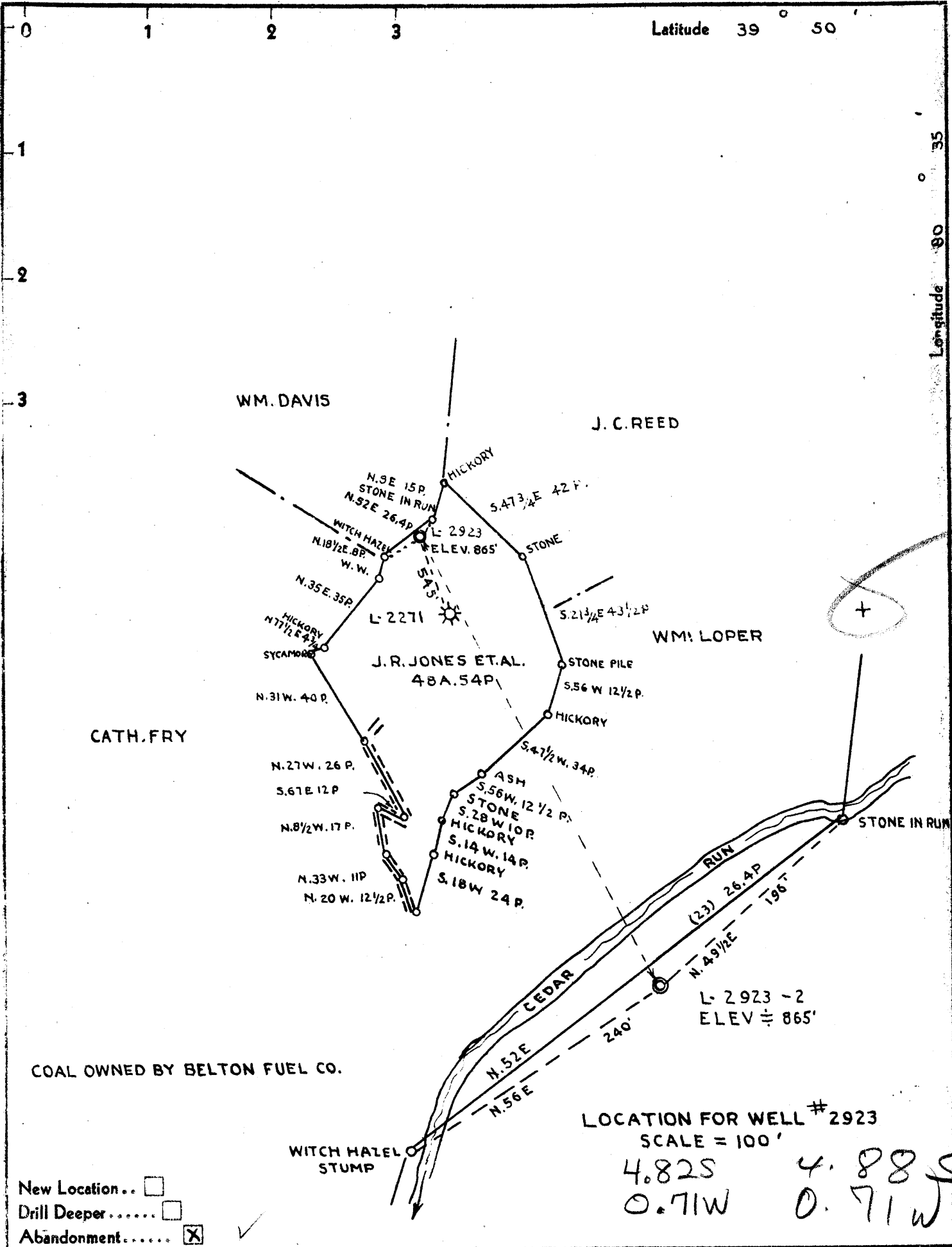
FILE NO. Mars-350-Redrill  
(Storage)

+ DENOTES LOCATION OF WELL ON UNITED STATES TOPOGRAPHIC MAPS, SCALE 1 TO 62,500. LATITUDE AND LONGITUDE LINES BEING REPRESENTED BY BORDER LINES AS SHOWN.

— DENOTES ONE INCH SPACES ON BORDER LINE OF ORIGINAL TRACING.

too crowded to plot

0 0 25



Company THE MANUFACTURERS LIGHT AND HEAT CO.

Address 800 UNION TRUST BLD'G. PITTSBURGH PA.

Farm J.R. JONES ET AL.

Tract Acres 48A.54P Lease No. 2217

Well (Farm) No. 2 Serial No. 2923

Elevation (Spirit Level) 865'

Quadrangle CAMERON S.E. 1/4

County MARSHAL District LIBERTY

Engineer J. Mercer

Engineer's Registration No. \_\_\_\_\_

File No. \_\_\_\_\_ Drawing No. Y-10-814

Date OCTOBER 12 1942 Scale 1" = 800'

**STATE OF WEST VIRGINIA**  
 DEPARTMENT OF MINES  
 OIL AND GAS DIVISION  
 CHARLESTON

**WELL LOCATION MAP**

File No. MARS-188-A  
 NOW MARS 350

+ Denotes location of well on United States Topographic Maps, scale 1 to 62,500, latitude and longitude lines being represented by border lines as shown.

— Denotes one inch spaces on border line of original tracing.



STATE OF WEST VIRGINIA  
DEPARTMENT OF MINES  
OIL AND GAS DIVISION

Quadrangle Cameron

Permit No. MARS-350 -R

WELL RECORD

Oil or Gas Well Storage  
(KIND)

Company The Manufacturers Light and Heat Company

Address \_\_\_\_\_

Farm J. R. Jones Acres 48

Location (waters) Fish Creek

Well No. 2923 Elev. 865'

District Liberty County Marshall

The surface of tract is owned in fee by \_\_\_\_\_

Address \_\_\_\_\_

Mineral rights are owned by \_\_\_\_\_

Address \_\_\_\_\_

Drilling commenced \_\_\_\_\_

Drilling completed November 24, 1959

Date Shot \_\_\_\_\_ From \_\_\_\_\_ To \_\_\_\_\_

With \_\_\_\_\_

Open Flow \_\_\_\_\_ /10ths Water in \_\_\_\_\_ Inch

\_\_\_\_\_ /10ths Merc. in \_\_\_\_\_ Inch

Volume \_\_\_\_\_ Cu. Ft.

Rock Pressure \_\_\_\_\_ lbs. \_\_\_\_\_ hrs.

Oil \_\_\_\_\_ bbls., 1st 24 hrs.

WELL ACIDIZED \_\_\_\_\_

WELL FRACTURED \_\_\_\_\_

Casing and Tubing	Used in Drilling	Left in Well	Packers
Size			Kind of Packer <u>None</u>
<del>XII</del> 10"	255	255	Size of _____
<del>XI</del> 8"	1040	1040	Depth set _____
<del>XI</del> 7"	1636	1636	Perf. top _____
6 3/8"			Perf. bottom _____
3"			Perf. top _____
2"			Perf. bottom _____
Liners Used			

CASING CEMENTED \_\_\_\_\_ SIZE \_\_\_\_\_ No. Ft. \_\_\_\_\_ Date \_\_\_\_\_

(Note) All Casing cemented

Pittsburgh Coal To 550 FEET To 556 FEET

COAL WAS ENCOUNTERED AT 550 FEET 556 FEET

FEET INCHES FEET INCHES

FEET INCHES FEET INCHES

RESULT AFTER TREATMENT \_\_\_\_\_

ROCK PRESSURE AFTER TREATMENT \_\_\_\_\_

Fresh Water \_\_\_\_\_ Feet Salt Water \_\_\_\_\_ Feet

Formation	Color	Hard or Soft	Top	Bottom	Oil, Gas or Water	Depth	Remarks
<del>Pittsburgh Coal</del>			550	556			
<del>Big Dunkard Sand</del>			1010	1072			
<del>Lower Maxton Sand</del>			1602	1620			
TOTAL DEPTH				1647			

STATE OF WEST VIRGINIA  
DEPARTMENT OF MINES  
OIL AND GAS DIVISION

232

MARS-188-A

WELL RECORD

Permit No. Drilled in 1925 Now MARS-350

Oil or Gas Well Gas  
(KIND)

Company The Mfrs Light & Heat Co.  
Address 800 Union Trust Bldg., Pittsburgh, Pa.  
Farm J. R. Jones Acres 48  
Location (waters) \_\_\_\_\_  
Well No. 2-2923 Elev. 865 ft.  
District Liberty County Marshall  
The surface of tract is owned in fee by William Jones  
Box 457 Address Cameron, WVa.  
Mineral rights are owned by The Mfrs Light & Heat  
800 Union Trust Bldg. Address Pittsburgh, Pa.  
Drilling commenced March 16, 1925  
Drilling completed April 9, 1925  
Date Shot \_\_\_\_\_ From \_\_\_\_\_ To \_\_\_\_\_  
With 16 /10ths Water in \_\_\_\_\_ Inch  
\_\_\_\_\_ /10ths Merc. in \_\_\_\_\_ Inch  
Volume 145 /10ths \_\_\_\_\_ Cu. Ft.  
Rock Pressure 1000 lbs. \_\_\_\_\_ hrs.  
Oil \_\_\_\_\_ bbls., 1st 24 hrs.  
Fresh water \_\_\_\_\_ feet \_\_\_\_\_ feet  
Salt water \_\_\_\_\_ feet \_\_\_\_\_ feet

Casing and Tubing	Used in Drilling	Left in Well	Packers
Size			Kind of Packer
16			
13			
10	253 ft	253	Size of
8 1/4	1031	1031	8 1/4 x 6 5/8"
6 5/8	1664	1664	Depth set
5 3/16			1467 1/2
3			Perf. top
2			Perf. bottom
Liners Used			Perf. top
			Perf. bottom

CASING CEMENTED \_\_\_\_\_ SIZE \_\_\_\_\_ No. Ft. \_\_\_\_\_ Date \_\_\_\_\_  
COAL WAS ENCOUNTERED AT 540 FEET 84 INCHES  
\_\_\_\_\_ FEET \_\_\_\_\_ INCHES \_\_\_\_\_ FEET \_\_\_\_\_ INCHES  
\_\_\_\_\_ FEET \_\_\_\_\_ INCHES \_\_\_\_\_ FEET \_\_\_\_\_ INCHES

Formation	Color	Hard or Soft	Top	Bottom	Oil, Gas or Water	Depth Found	Remarks
Mud			0	6			
Sand			6	20			
Shale			20	30			
Sand			30	50			
Lime			50	100			
Slate			100	160			
Lime			160	240			
Slate			240	295			
Lime			295	355			
Slate			355	370			
Lime, dark			370	450			
Lime, white			450	525			
Slate			525	540			
Pittsburgh Coal			540	547			
Lime			547	560			
Red Rock			560	620			
Shale			620	700			
Lime			700	740			
Sand			740	755			
Red Rock			755	815			
Lime			815	850			
Red Rock			850	915			
Shale			915	1003			
Big Dunkard			1003	1056			
Shale			1056	1220			
Gas Sand			1220	1310			
Mud & Slate			1310	1440			
Salt <u>SB</u>			1440	1467			
Shale			1467	1550			
Maxon Sand			1550	1616 1/2	Gas 1616		
Total depth				1647 1/2	" 1628		



Formation	Color	Hard or Soft	Top	Bottom	Oil, Gas or Water	Depth Found	Remarks

Date October 12th, 194 2

APPROVED THE MANUFACTURERS LIGHT & HEAT CO., Owner

By Harry H. Fowler  
 Land Dept. (Title) Office Mgr.